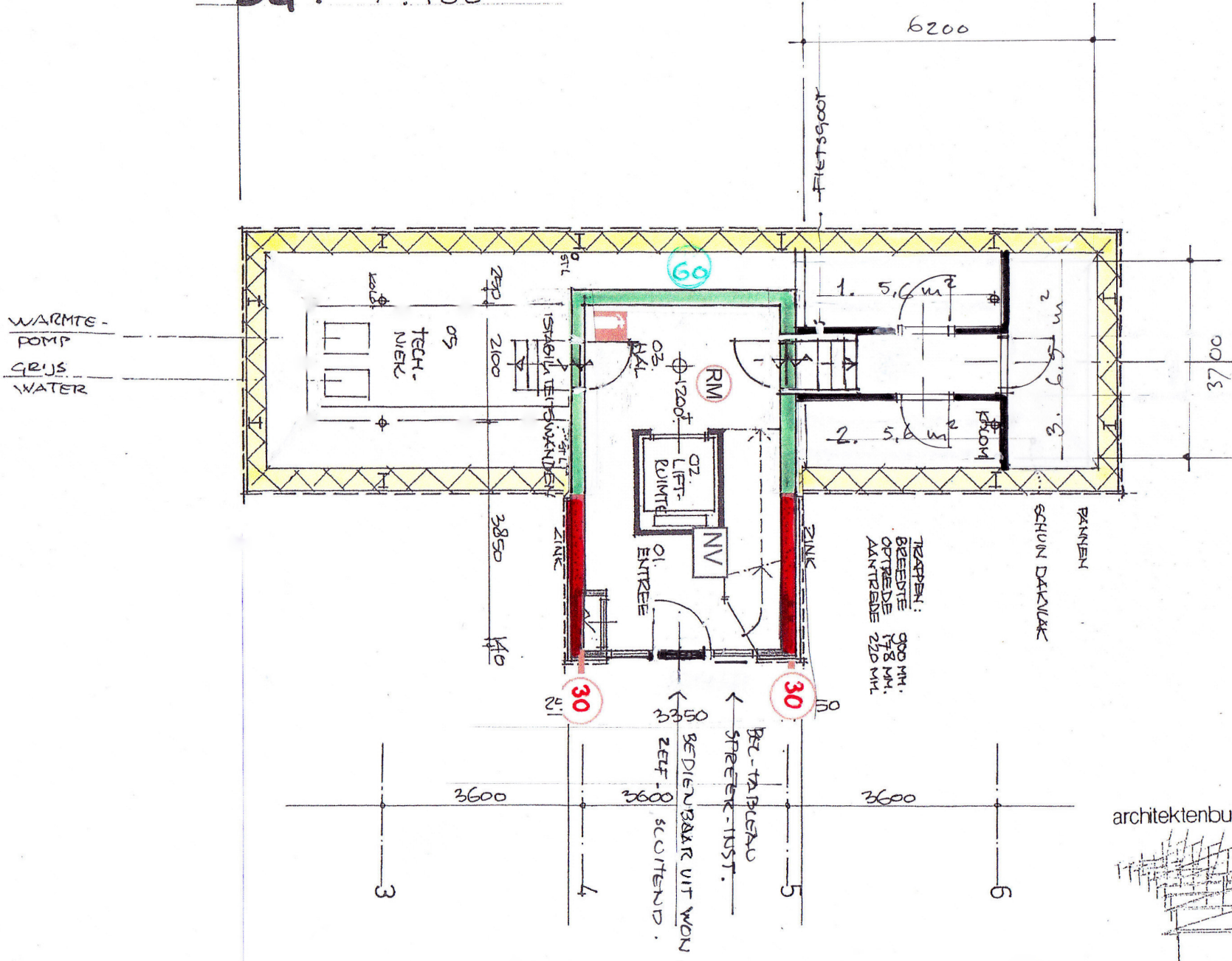
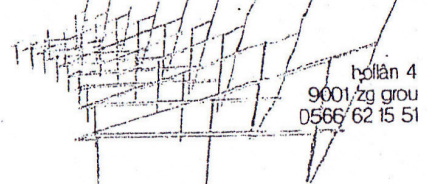


Bq. 1:100



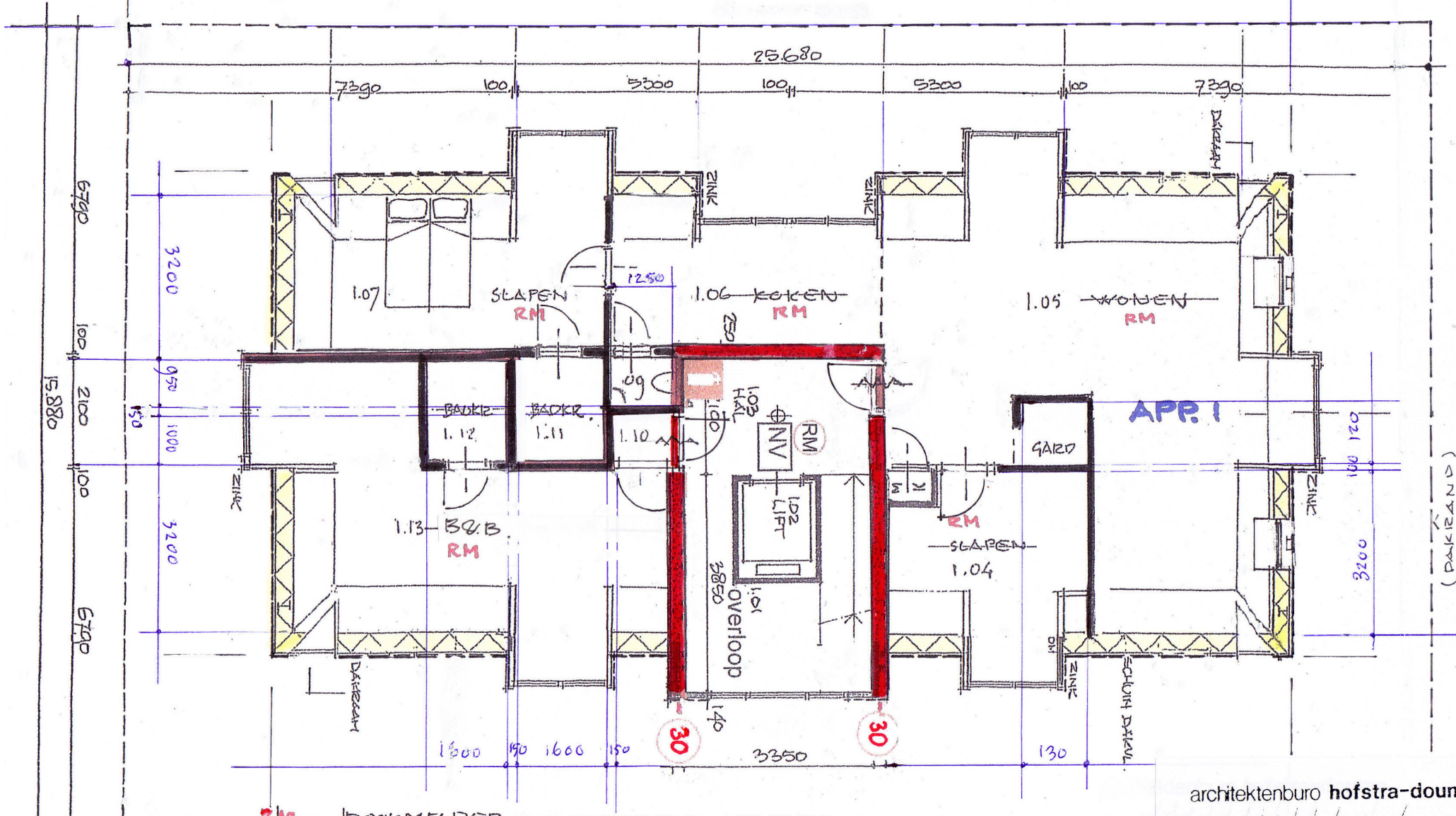
architektenburo hofstra-douma



rein hofstra

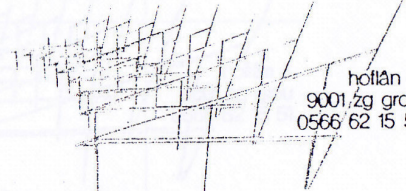
holân 4
9001/zg grou
0566 62 15 51

1^o VERDIEPING 1:100



- RM** ROEPELDER
- DEUR 900 x 2300
- WAND: FERMACELL 12.5 MM - 2-Z'JDK + STEENWOL
- 30 MIN BRANDW/ ZELFSCUITEND.
- KONSTRUKTIEVE BETONWAND

architektenburo **hofstra-douma**

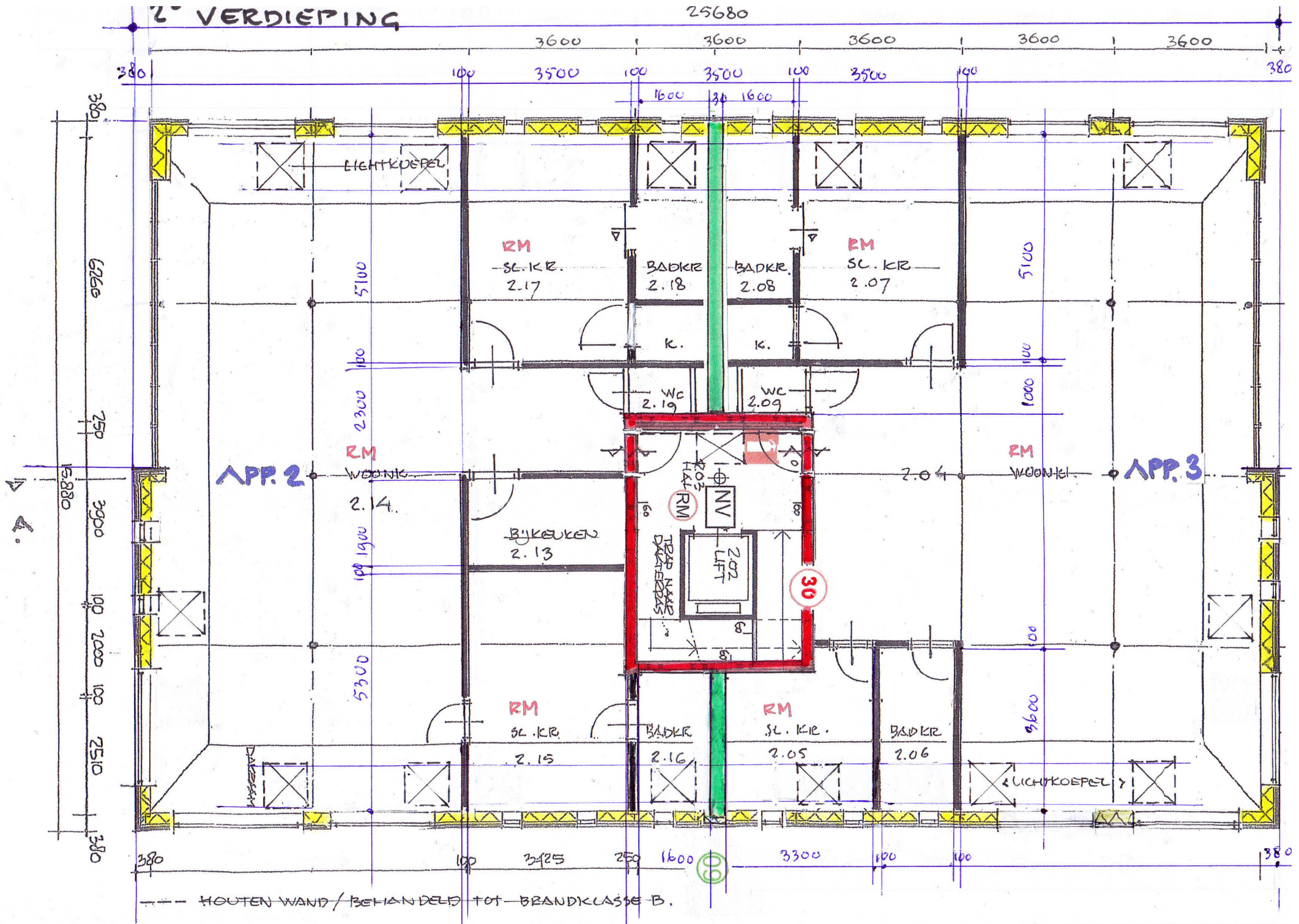


hoffan 4
9001 zg grou
0566 62 15 51

rein hofstra

(PARKAND)

2^e VERDIEPING



--- HOUTEN WAND / BEHANDELD TOT BRANDKLASSE B.