



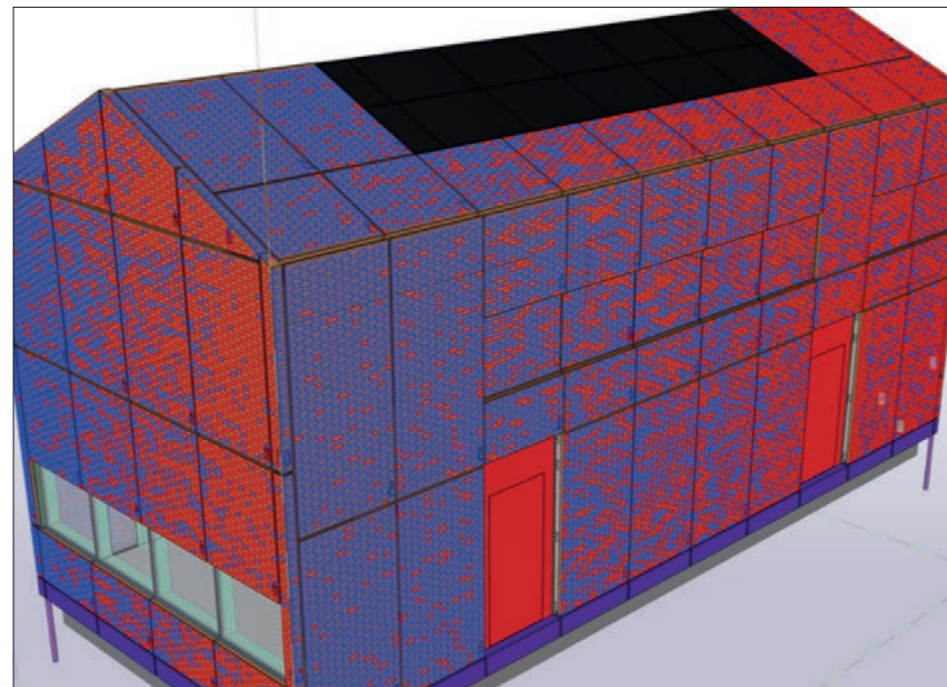
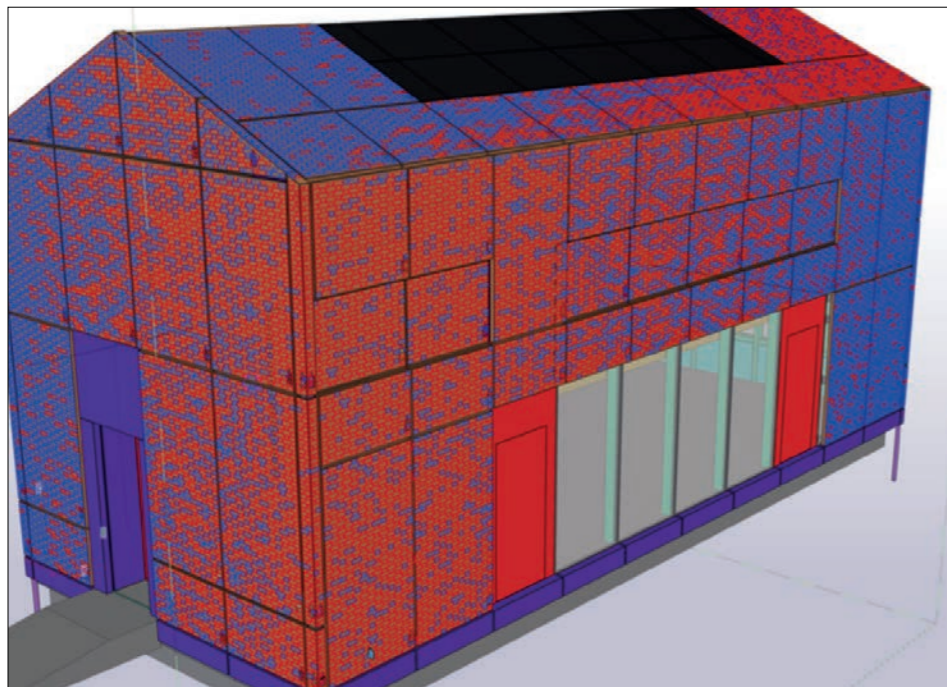
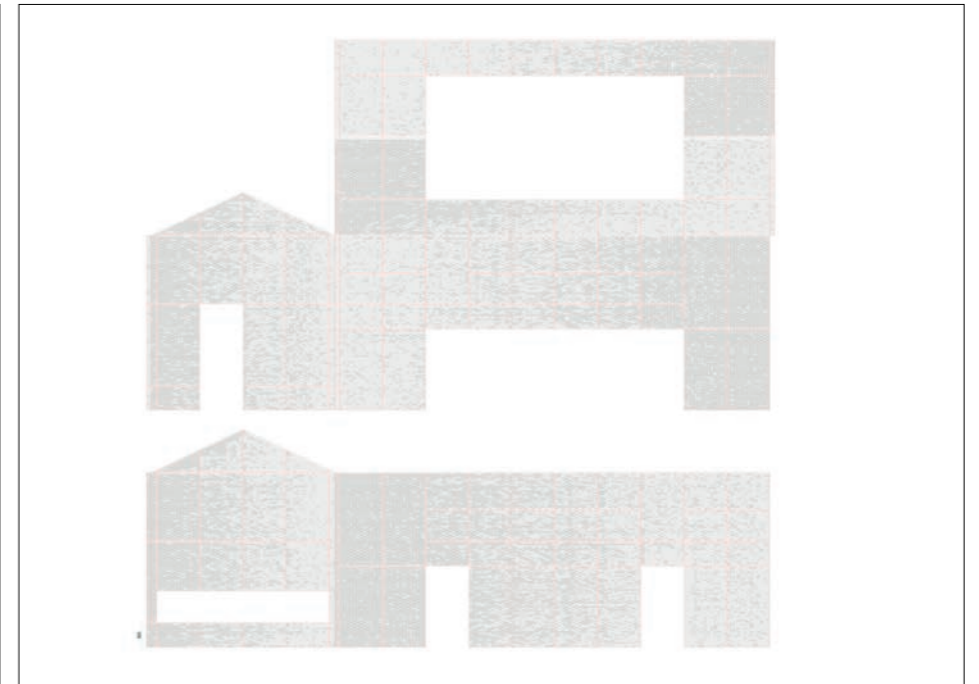
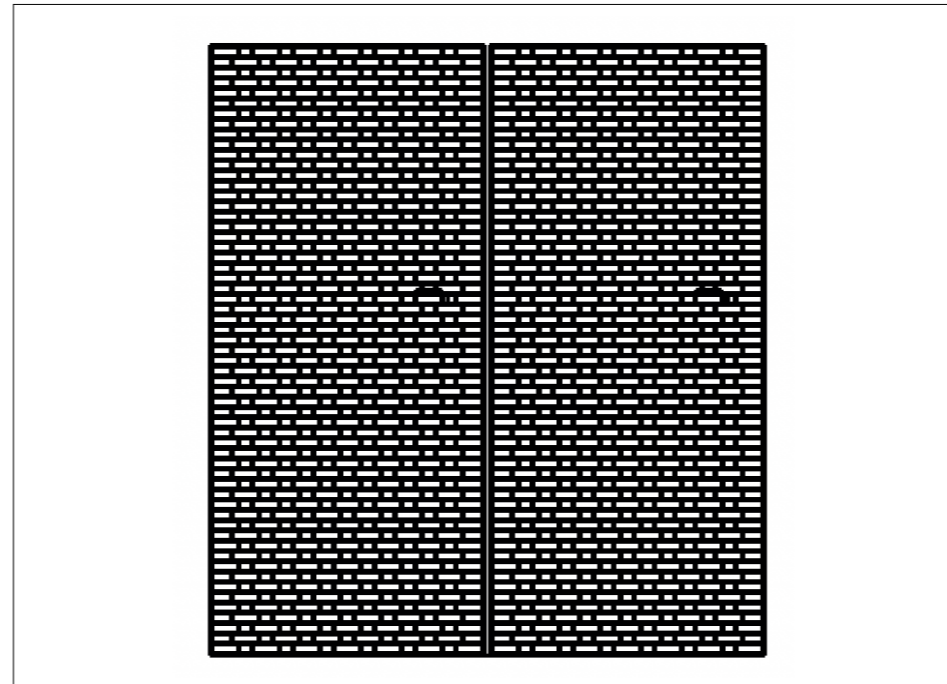
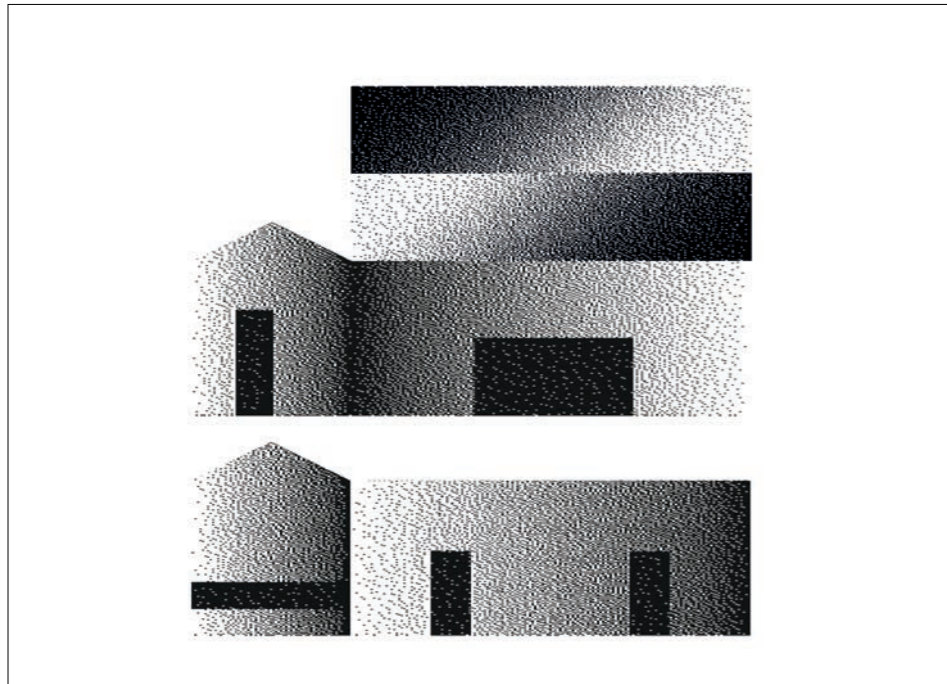
Afhankelijk van de stedenbouwkundige situatie is er de keuze tussen landelijke en dorps woningtypes. Er zijn meerdere woningtypes, waaruit een keuze kan worden gemaakt.

Dorps wonen

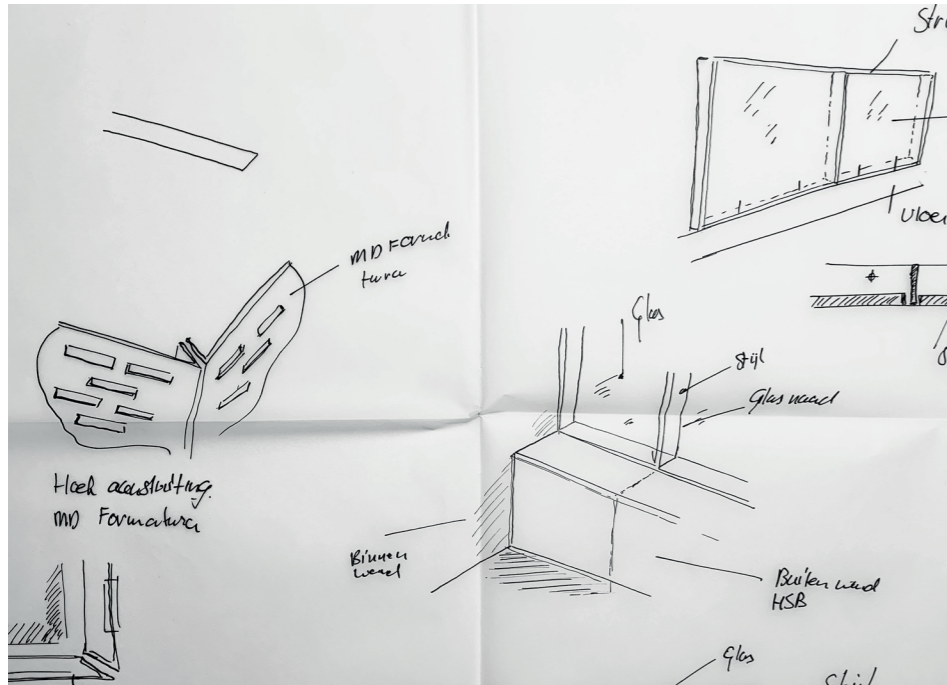
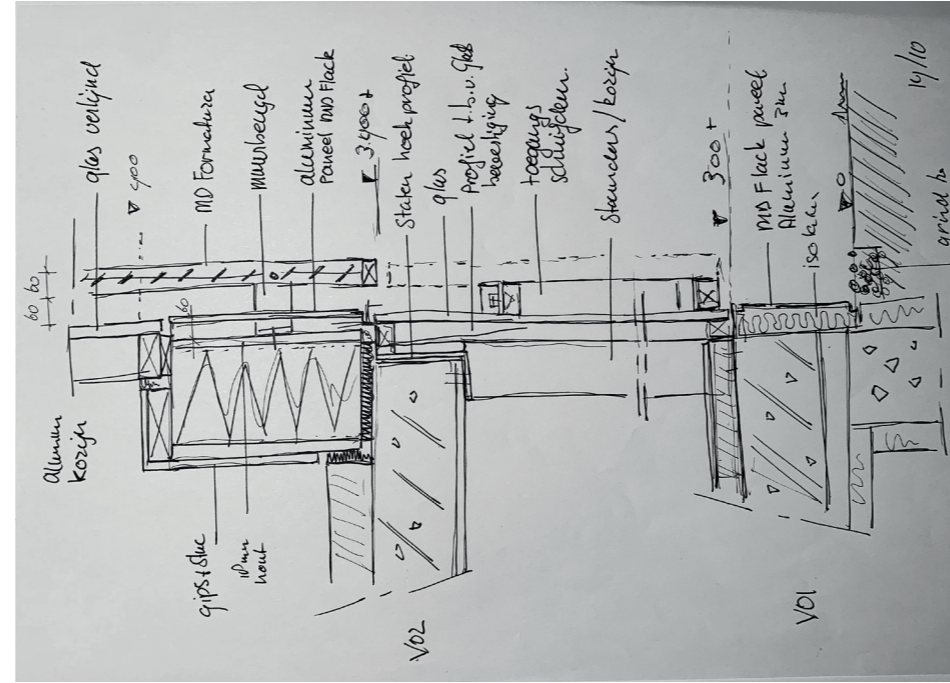
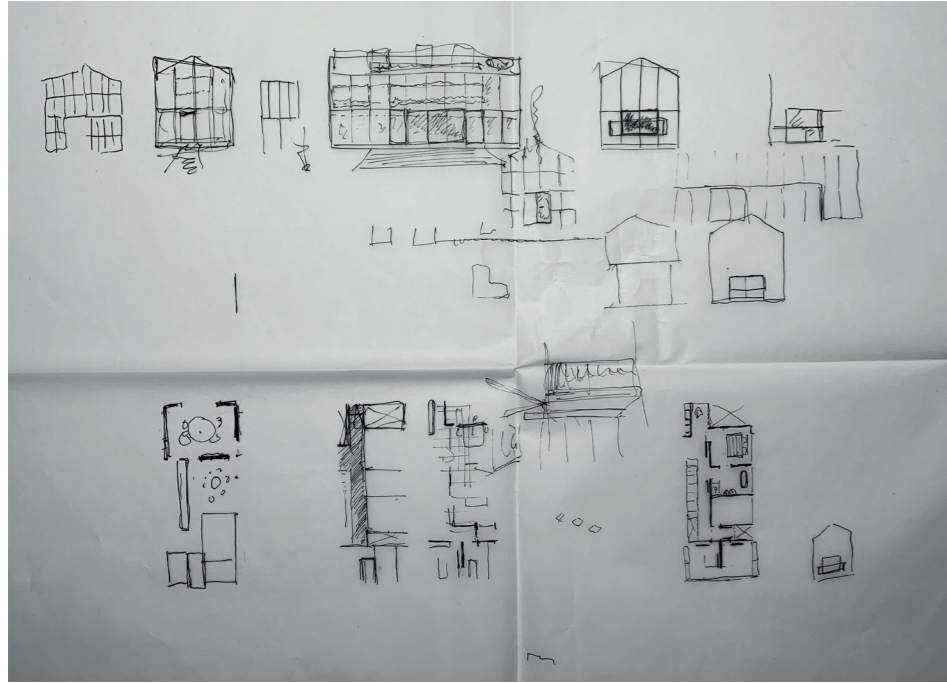
-  *dorpswoning*
-  *geschakelde woning*
-  *tweeling woning*
-  *dorpsblok*
-  *dorpsvilla*

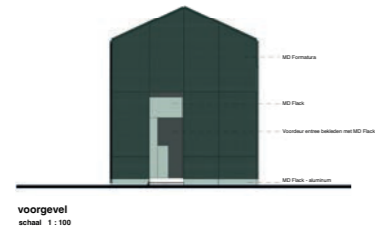
Landschappelijk wonen

-  *boerderij*
-  *boerenwoning*
-  *tuinderswoning*
-  *schuur*
-  *pakhuis / loods*





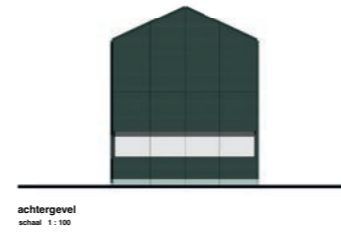




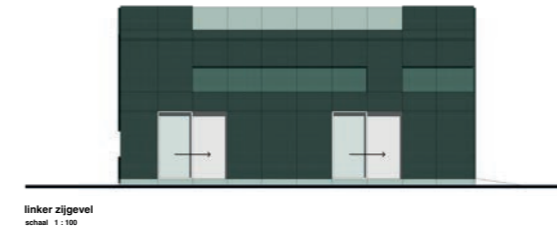
voorgevel
schaal 1:100



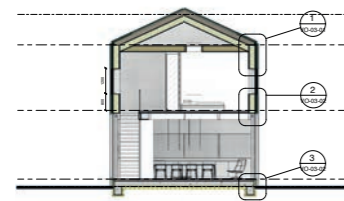
rechter zijgevel
schaal 1:100



achtergevel
schaal 1:100



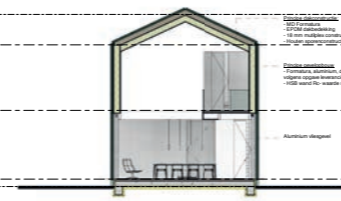
linker zijgevel
schaal 1:100



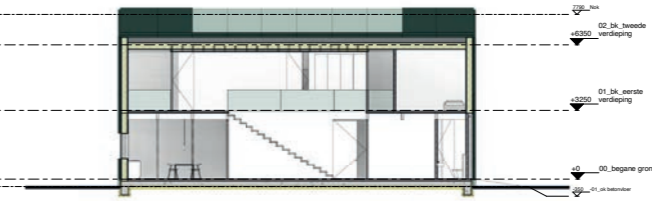
doorsnede A-A
schaal 1:100



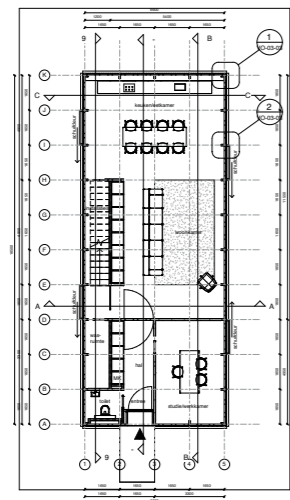
doorsnede B-B
schaal 1:100



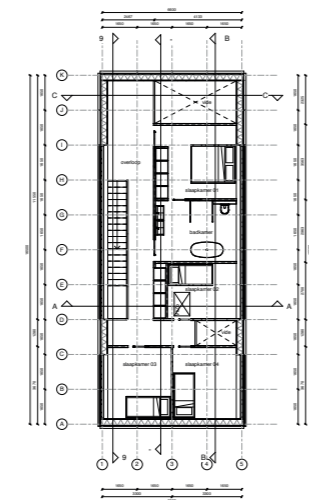
doorsnede C-C
schaal 1:100



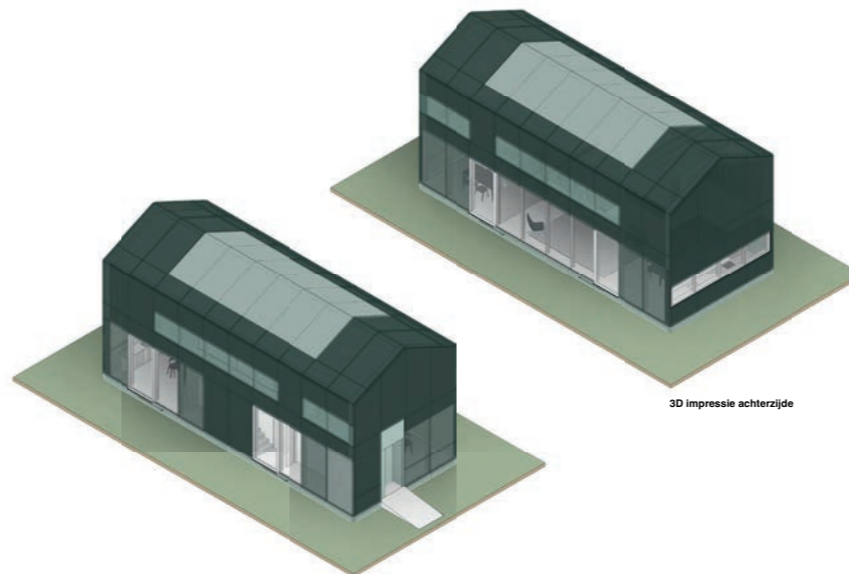
doorsnede D-D
schaal 1:100



begane grond
schaal 1:100



1e verdieping
schaal 1:100



3D impressie voorzijde

3D impressie achterzijde

