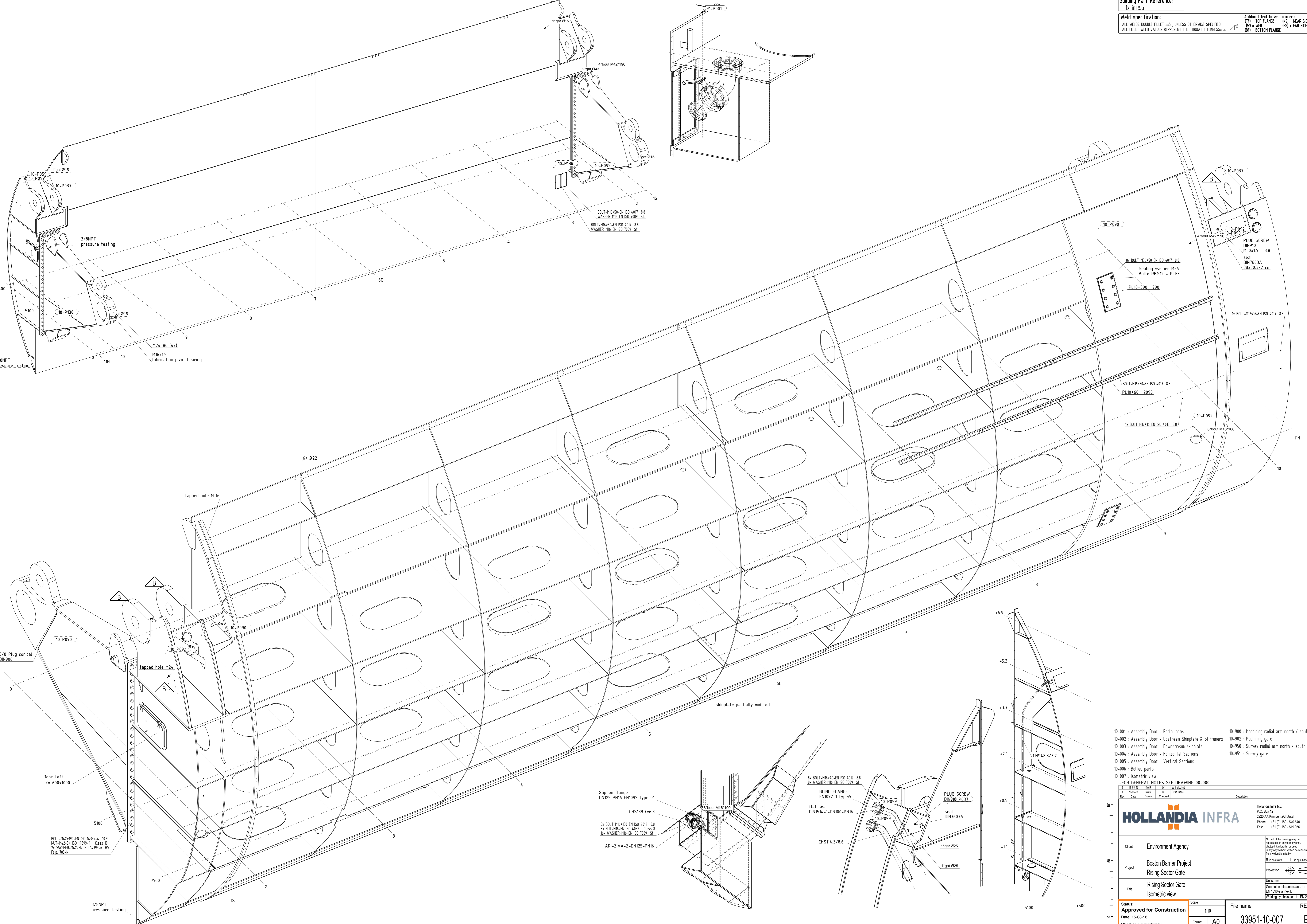


**Building Part Reference:**  
1x in RSG

**Weld specification:**  
-ALL WELDS DOUBLE FILLET a±5, UNLESS OTHERWISE SPECIFIED.  
-ALL FILLET WELD VALUES REPRESENT THE THROAT THICKNESS= a

**Additional text to weld numbers:**  
TFP = TOP FLANGE NSI = NEAR SIDE  
M = WEB PSI = FAR SIDE  
BF = BOTTOM FLANGE



2  
15  
BOLT-M16-50-EN ISO 4017 8.8  
WASHER-M16-EN ISO 7089 S1  
BOLT-M16-30-EN ISO 4017 8.8  
WASHER-M16-EN ISO 7089 S1

8x BOLT-M36-50-EN ISO 4017 8.8  
Sealing washer M36  
Bulte RBM12 - PTFE  
PL10x390 - 790

8x BOLT-M16-30-EN ISO 4017 8.8  
PL10x60 - 2090

1x BOLT-M12x16-EN ISO 4017 8.8

CHS139.7+6.3

8x BOLT-M16-50-EN ISO 4017 8.8  
8x WASHER-M16-EN ISO 7089 S1

BLIND FLANGE  
EN192-1 type 5  
flat seal  
DIN1514-1-DN100-PN16

PLUG SCREW  
DIN913-P037  
seal  
DIN7603A

CHS114.3/8.6

1'gat Ø25  
1'gat Ø25

Slip-on flange  
DN125-PN16-EN1092 type 01

8x BOLT-M16-50-EN ISO 4017 8.8  
8x NUT-M16-EN ISO 4032 Class 8  
16x WASHER-M16-EN ISO 7089 S1  
ARI-ZIVA-Z-DN125-PN16

- 10-001 : Assembly Door - Radial arms
- 10-002 : Assembly Door - Upstream Skinplate & Stiffeners
- 10-003 : Assembly Door - Downstream skinplate
- 10-004 : Assembly Door - Horizontal Sections
- 10-005 : Assembly Door - Vertical Sections
- 10-006 : Bolted parts
- 10-007 : Isometric view
- 10-900 : Machining radial arm north / south
- 10-902 : Machining gate
- 10-950 : Survey radial arm north / south
- 10-951 : Survey gate

FOR GENERAL NOTES SEE DRAWING 00-000

| Rev | Date     | Drawn | Checked | Description |
|-----|----------|-------|---------|-------------|
| 1   | 15-08-18 | Jac   | Jac     | 1st issue   |

**HOLLANDIA INFRA**

Client: Environment Agency  
Project: Boston Barrier Project  
Rising Sector Gate  
Title: Rising Sector Gate  
Isometric view

Hollandia Infra b.v.  
P.O. Box 12  
2620 AA Krimpen a/d IJssel  
Phone: +31 (0) 180 - 540 540  
Fax: +31 (0) 180 - 519 996

No part of this drawing may be reproduced in any form by print, photocopy, microfilm or otherwise, in any way without written permission from Hollandia Infra b.v.

Units: mm  
Geometric tolerances acc. to: EN 1092-2 annex D  
Working symbols acc. to: EN 22553

|  |             |                         |        |
|--|-------------|-------------------------|--------|
| Status: <b>Approved for Construction</b> | Scale: 1:10 | File name: 33951-10-007 | REV: B |
| Date: 15-08-18                           | Format: A0  |                         |        |
| Checked by: jacobiens                    |             |                         |        |