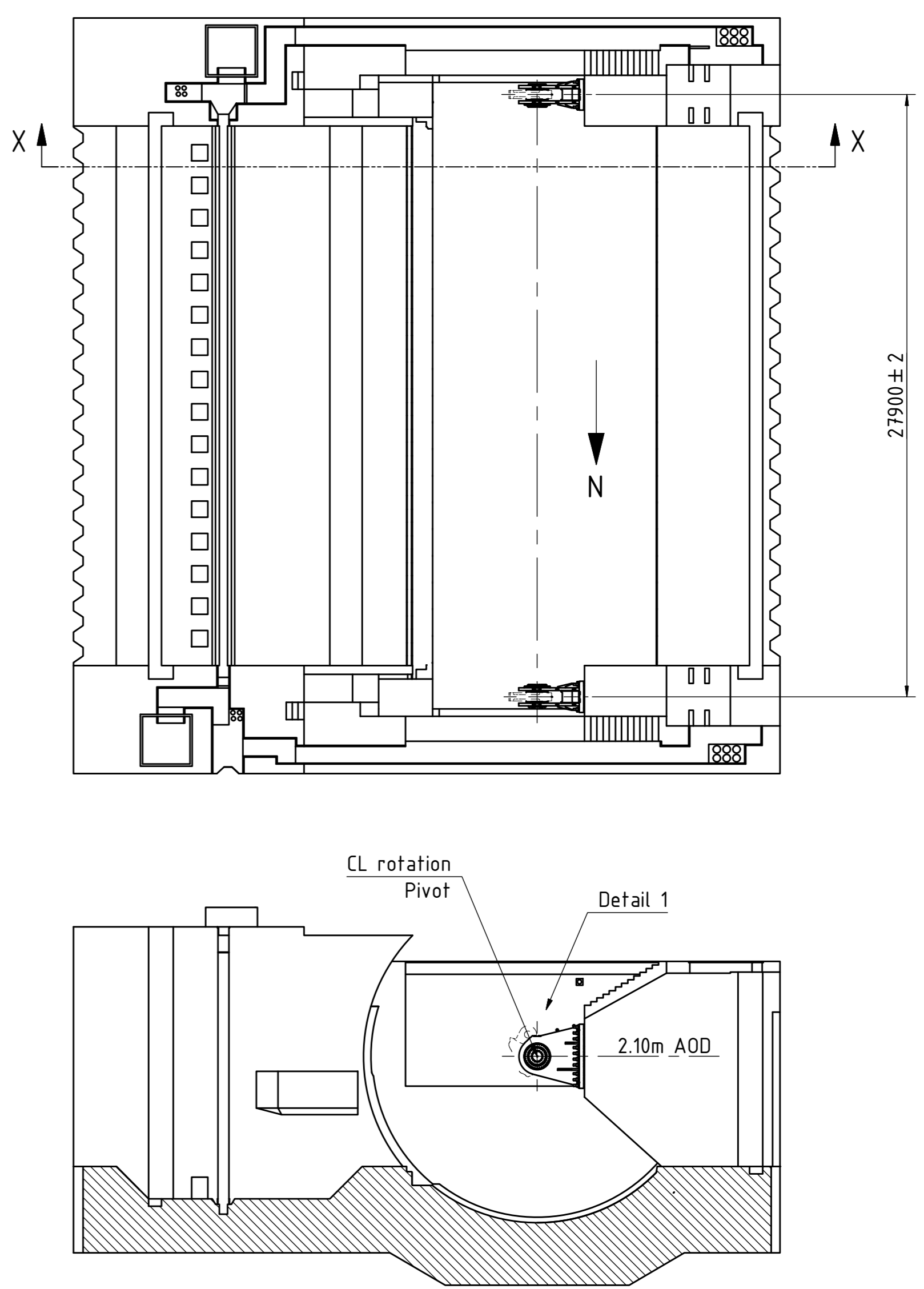
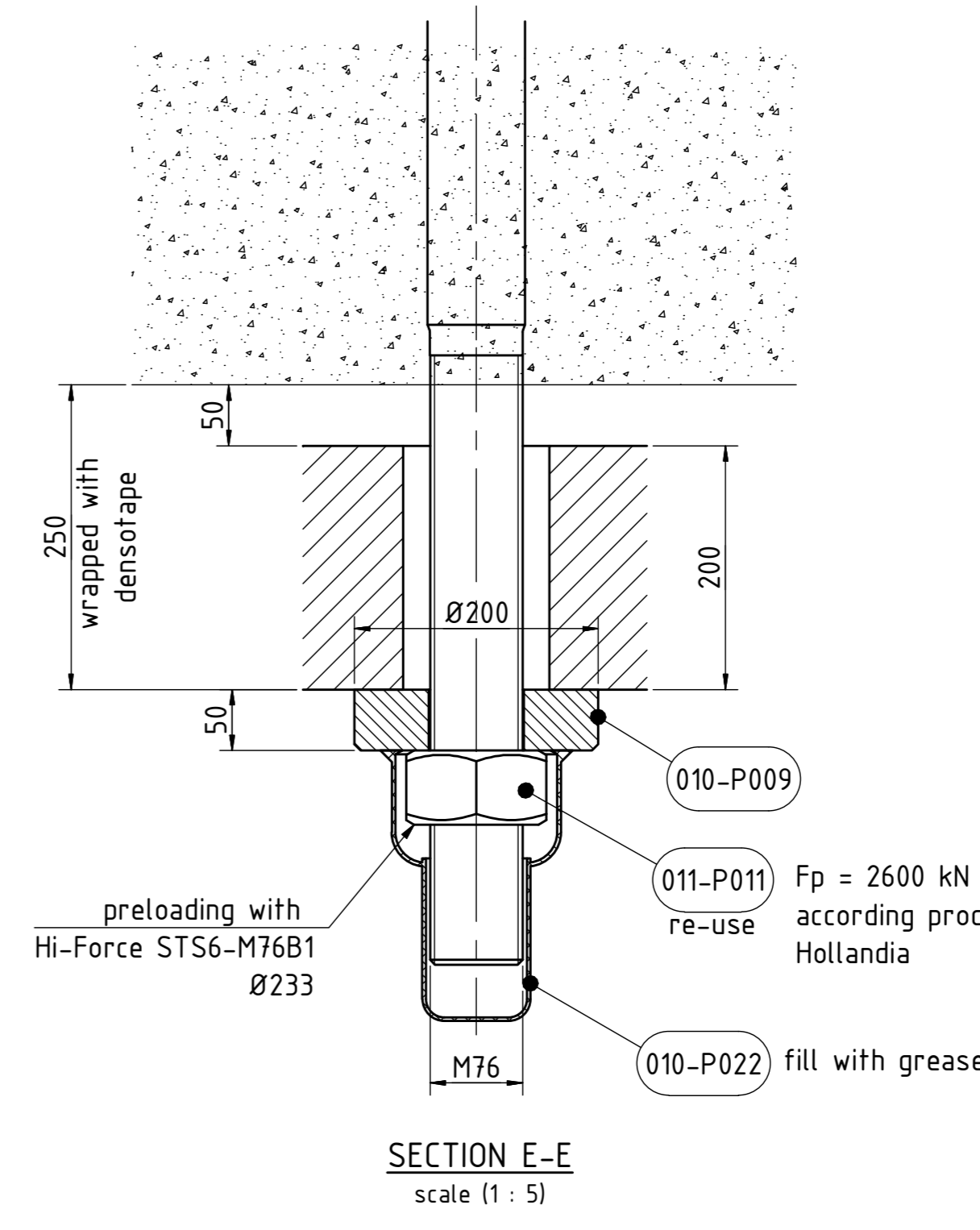
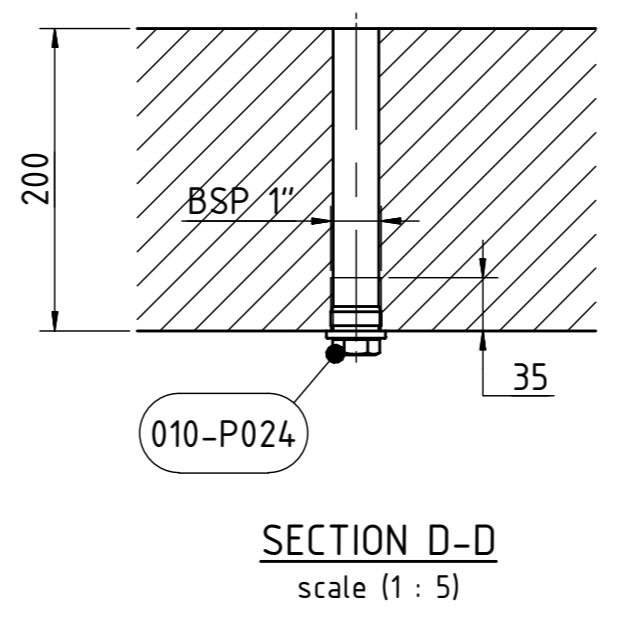
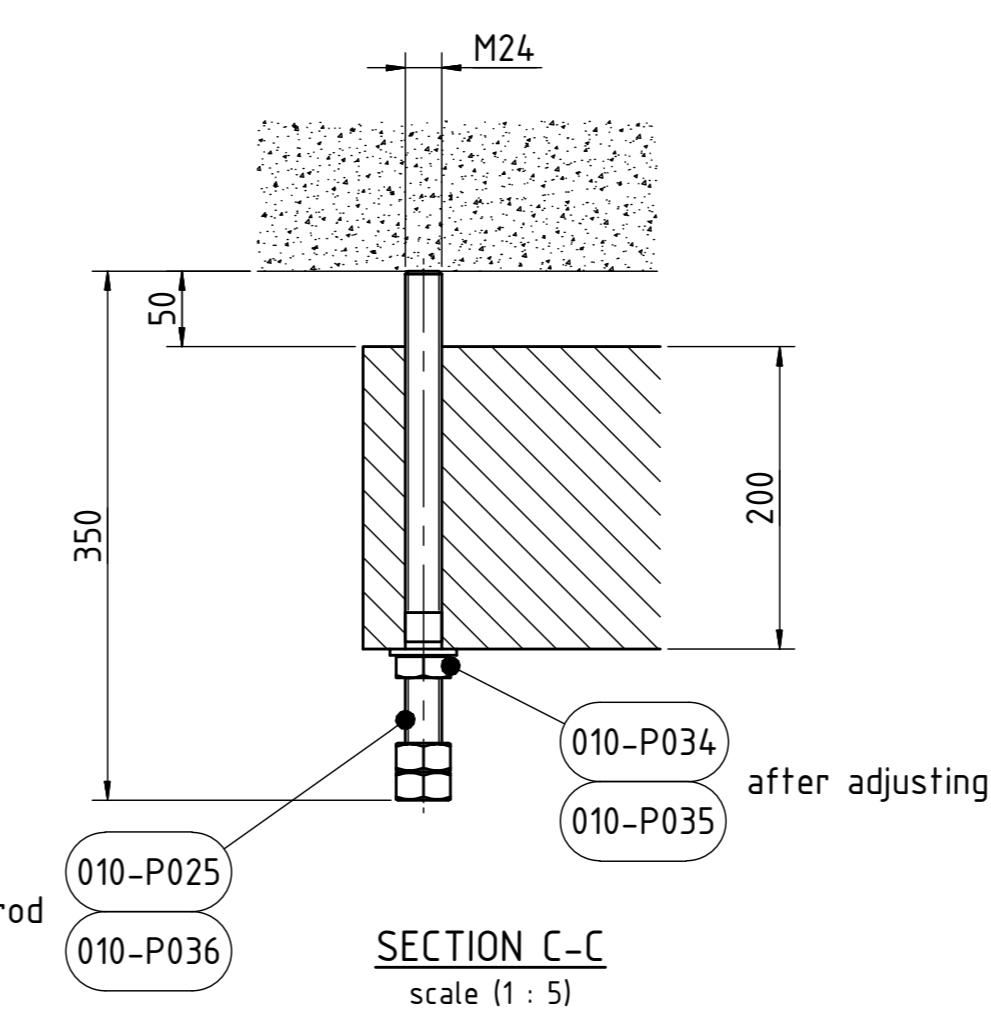
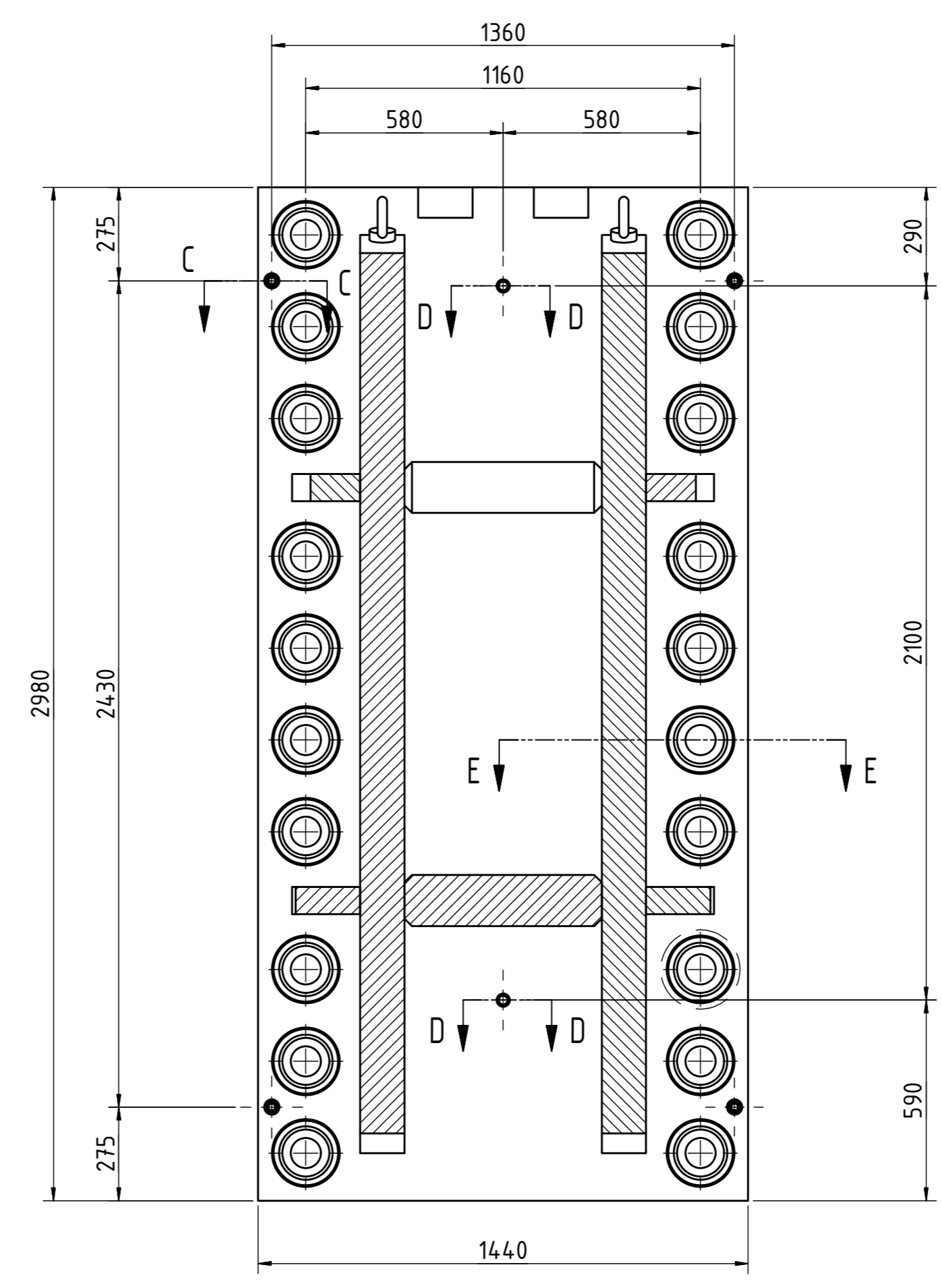
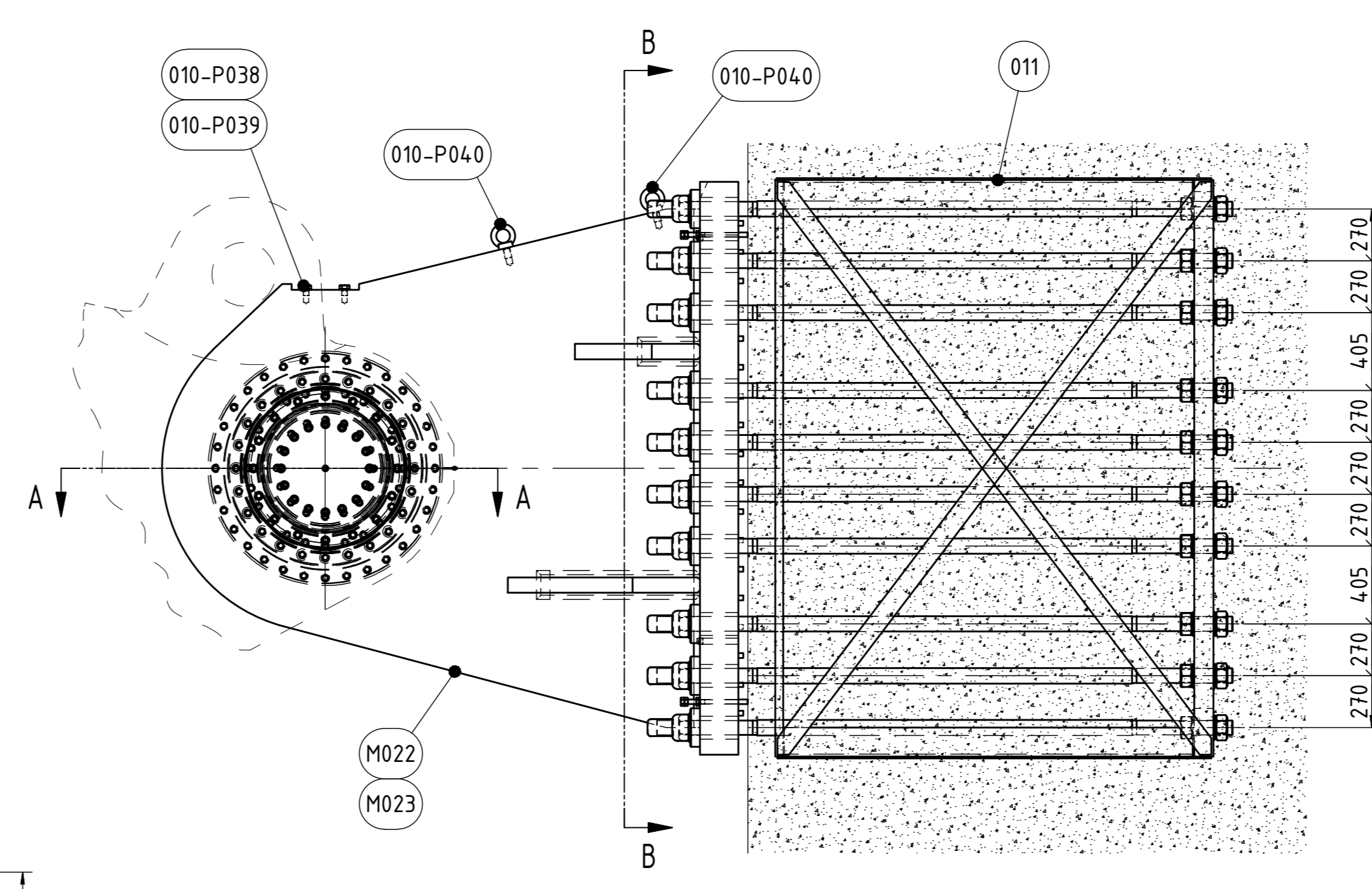


**\* BEARING (DEVA) item 010-P023**  
 self-lubricated, maintenance-free spherical bearing  
 - dimensions - Ø600xØ715 / Ø850 x 325 / 355mm  
 - material system - Devaglide  
 - type - Floating type  
 - mat. split outer ring st.st. 14418 (HOLD)  
 - inner spherical bush bronze deva glide  
 - net weight - appr. 735 kg  
 - according to drawing DEVA VZ3800916-5\_20



PART LIST										
HOLLANDIA ID	NOS	Profile	Length	Description	Material	Standard	Surface treatment	Weight		
010-P001	1	RD 64.0	897		X2CrNiMoN22-5-3_31			2016 kg		
010-P002	1	RD 64.0	897		X2CrNiMoN22-5-3_31			2019 kg		
010-P003	2	CHS 675x17.5	116		CuAl10Fe5Ni5			63 kg		
010-P004	2	CHS 1060x20	116		CuAl10Fe5Ni5			113 kg		
010-P005	1	RD 64.0x580	232.5		X2CrNiMoN22-5-3_31			103 kg		
010-P006	2	PL 176x1200	1200		X2CrNiMoN22-5-3_31			1527 kg		
010-P007	2	PL 40x830	830		X2CrNiMoN22-5-3_31			324 kg		
010-P008	2	PL 85x890	890		X2CrNiMoN22-5-3_31			645 kg		
010-P009	40	PL 55x200	200		S355Zn-3.11			599 kg		
010-P010	4	PL 55x190	190		X2CrNiMoN22-5-3_31			599 kg		
010-P011	1	RD 64.0x580	232.5		X2CrNiMoN22-5-3_31			98 kg		
010-P020	4	Y-Seal-FDI lid 640mm	25	Type: Y - Salt water resistant	FDI 1002			6 kg		
010-P021	4	RD 876x7		O-ring	NBR 70° Shore			0 kg		
010-P022	40	Telescopic Screw Cap		T5W115-1-G 219 (Radial)	PE (black)			10 kg		
010-P023	2	Bearing (DEVA) HOLD		i.d. 600mm / width 325mm o.d. 850mm / width 355mm				1501 kg		
010-P024	4	BSP 1\"		Screw Plug	Steel, Mild	DN 910	HGD	1 kg		
010-P025	8	M24x350	350	Threaded rods	St 8	DN 976	HGD+ISO	10 kg		
010-P026	2	M16x15		Grease Nipple type m1	Brass	DN 3404		0 kg		
010-P027	96	M24x80		Hex bolt	RVS A4-80	EN 4017		39 kg		
010-P028	4	M16x16		Hex bolt	RVS A4-80	EN 4017		0 kg		
010-P029	4	M16		Plain washer	RVS A4-80	EN 7089		0 kg		
010-P030	32	M24x100		Hex bolt	RVS A4-80	EN 4014		16 kg		
010-P031	48	M24x130		Hex bolt	RVS A4-80	EN 4014		28 kg		
010-P032	128	M24x90		Hex bolt	RVS A4-80	EN 4014		57 kg		
010-P033	304	M24		Plain washer	RVS A4-80	EN 7089		10 kg		
010-P034	8	M24x30		Hex bolt	St 8	EN 4017	HGD+ISO	2 kg		
010-P035	8	M24		Plain washer	St	EN 7089	HGD	0 kg		
010-P036	16	M24		Hex nut	Class 8	EN 4032	HGD	2 kg		
010-P038	8	M30		Plain washer	St	EN 7089	HGD	0 kg		
010-P039	8	M30x35		Hex bolt	St 8	EN 4017	HGD+ISO	4 kg		
010-P040	8	M36		Lifting eye bolt	Steel Grade 80_3.1	DN 580	HGD	3 kg		
011	2	Assembly		Assembly Anchors Pivot				13127 kg		
M022	1	Assembly		Machining drawing 20-911				17653 kg		
M023	1	Assembly		Machining drawing 20-912				17653 kg		

BUILDING PART REFERENCE		
1x in PIVOT		
TRANSPORT LIST		
HOLLANDIA ID	NOS	Location
010-P001	1	Location 3
010-P002	1	Location 3
010-P005	1	Location 3
010-P007	2	Location 3
010-P008	2	Location 3
010-P009	40	Location 3
010-P011	1	Location 3
010-P022	40	Location 3
010-P025	8	Location 3
010-P028	4	Location 3
010-P029	4	Location 3
010-P030	32	Location 3
010-P031	48	Location 3
010-P032	128	Location 3 (partial)
010-P033	304	Location 3 (partial)
010-P034	8	Location 3
010-P035	8	Location 3
010-P036	16	Location 3
011	2	Location 2
M022	1	Location 3
M023	1	Location 3

GENERAL NOTES:  
 for general notes see dwg. 00-000

C	4-7-2019	RvZ	FvB	see pos 1 and 2, and bush pos 5 and 11, have longer track for mounting Y-seal pos 20.
B	20-11-2018	HPLJ	JVI	tolerance item P003 and P004 changed
A	10-10-2018	HPLJ	JVI	First issue
Rev.	Date	Drawn	Checked	Description

Client :	BMMJV	No part of this drawing may be reproduced in any form by print, photograph or used in any other way without written permission from Hollandia Infra b.v.
Project :	Boston Barrier Project	
Title :	Assembly Pivot North and South	Units: mm Tolerances according to: NEN ISO 2768 classes fit

Status:	Scale:	File name:	REV.
Approved for Construction	1 : 25	33951-20-010	C
Date: 05-07-19	Checked by:	Formal:	A0
Florine Huijings-van Bohemen			

