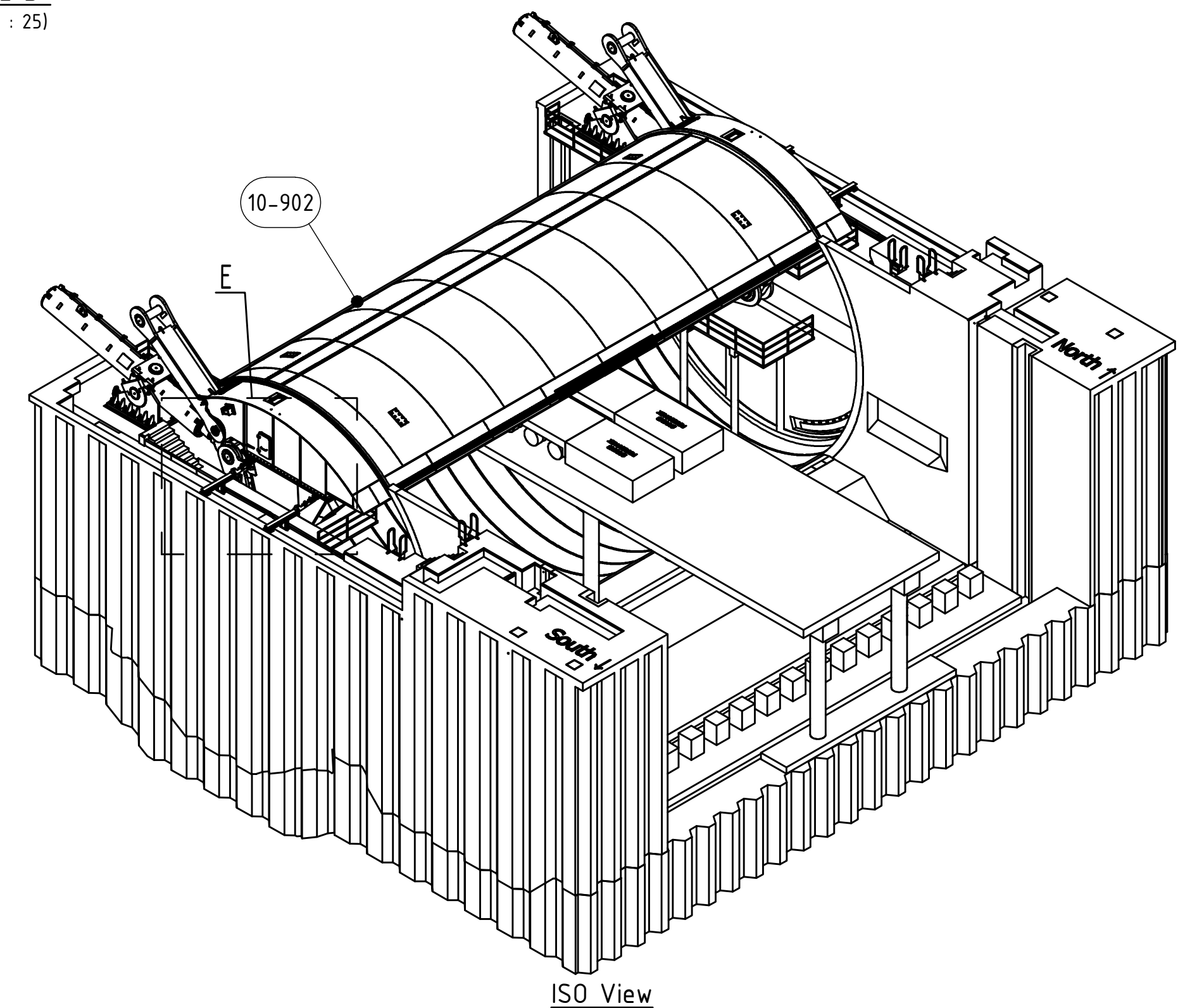
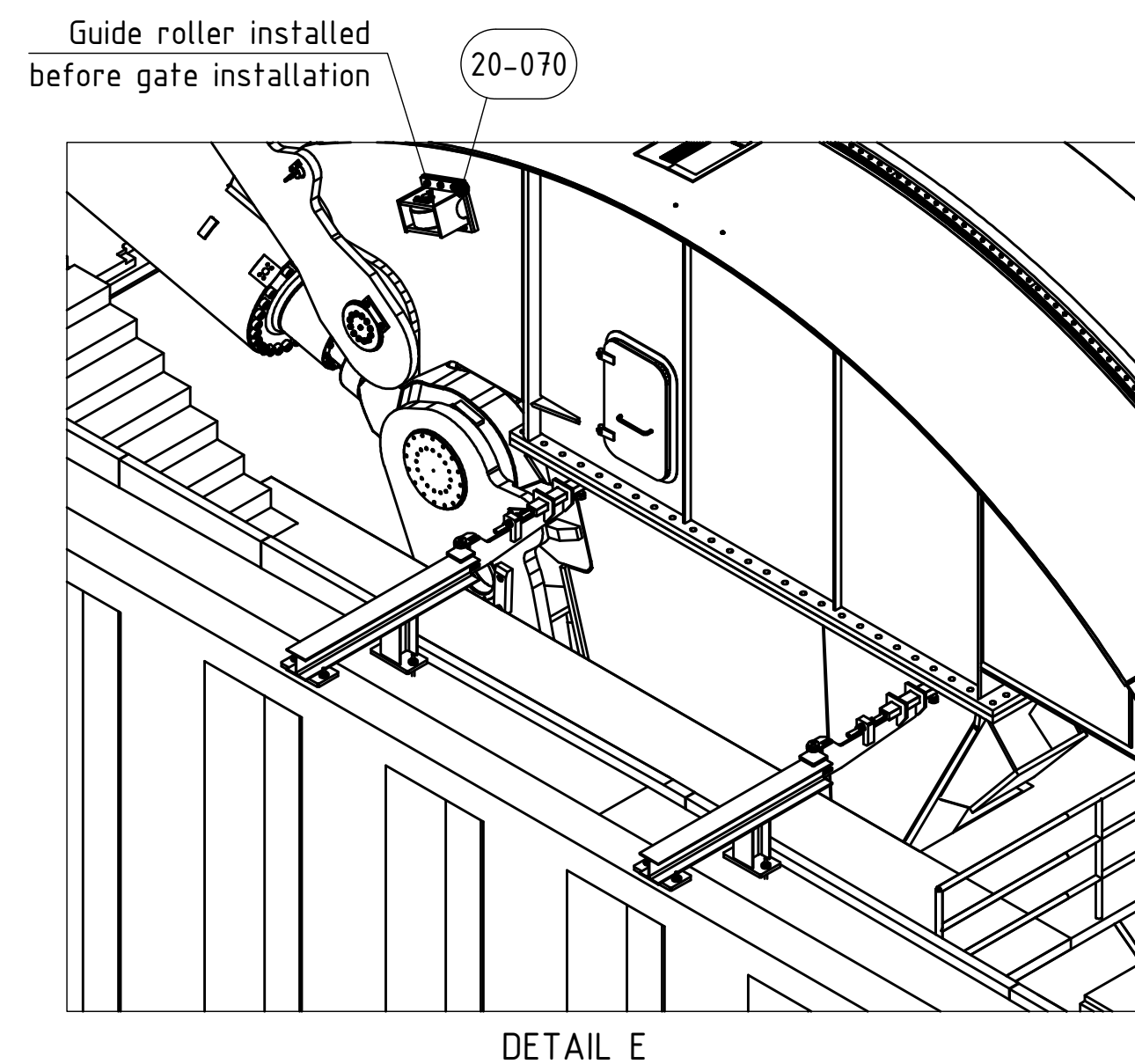
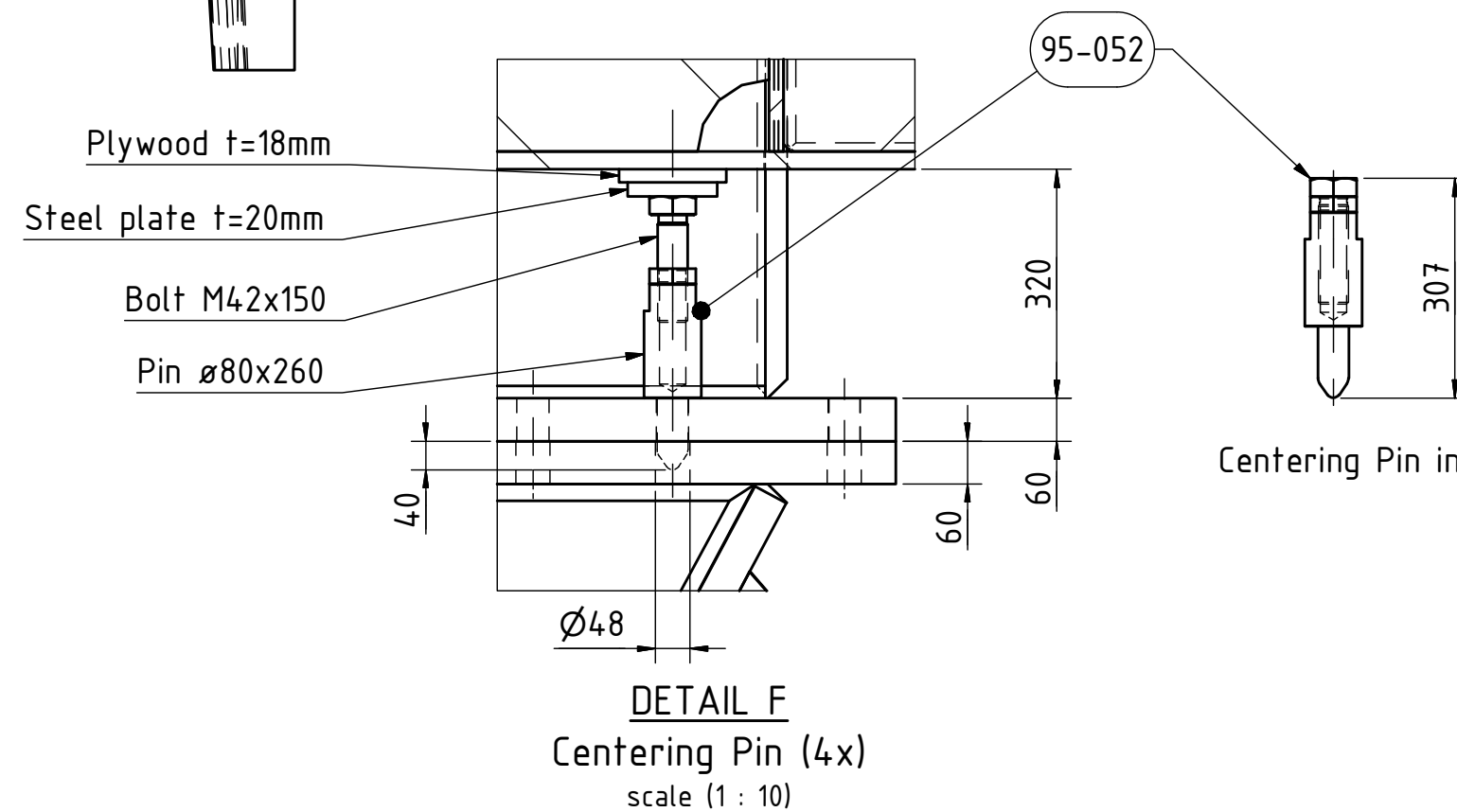
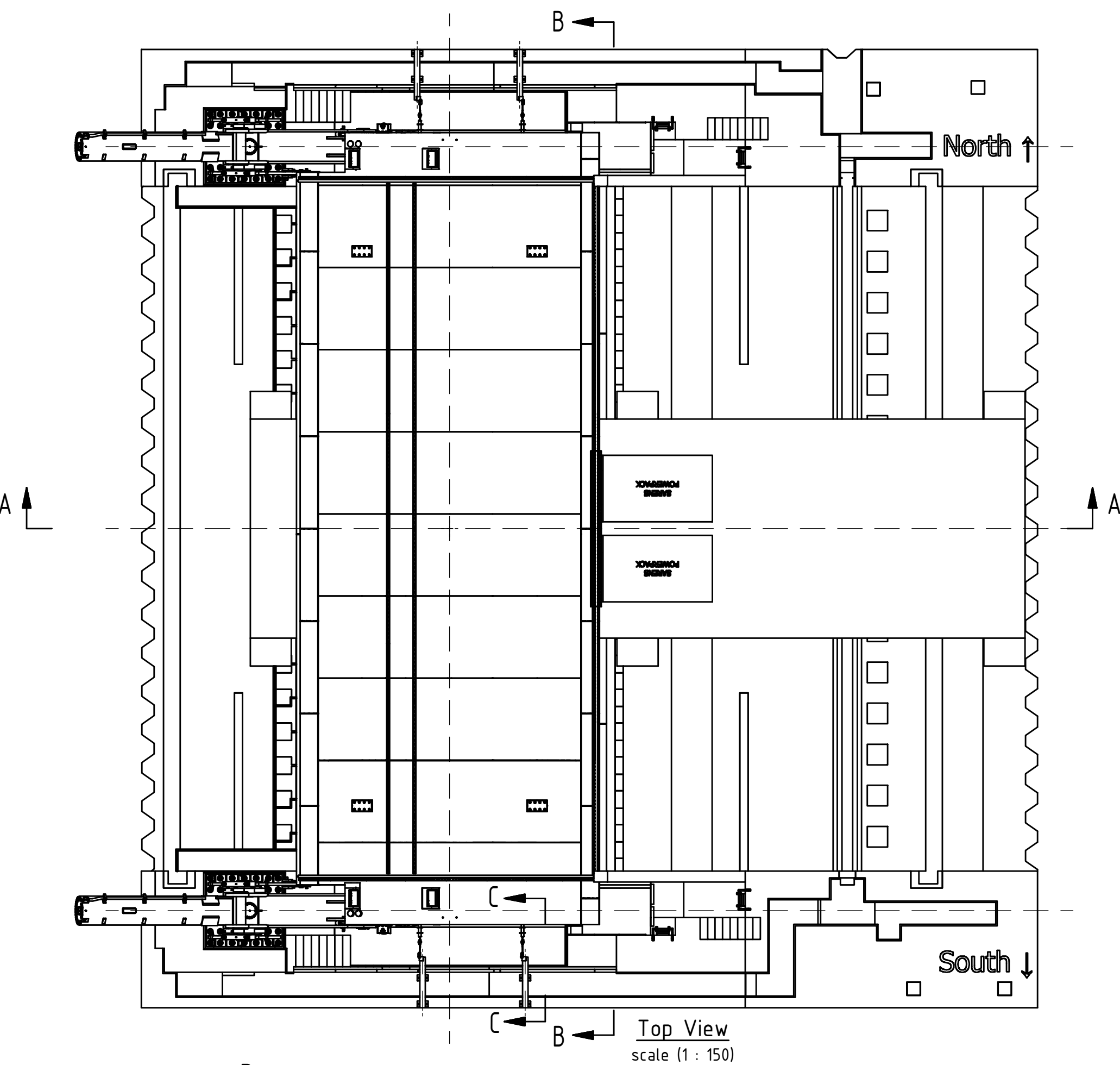
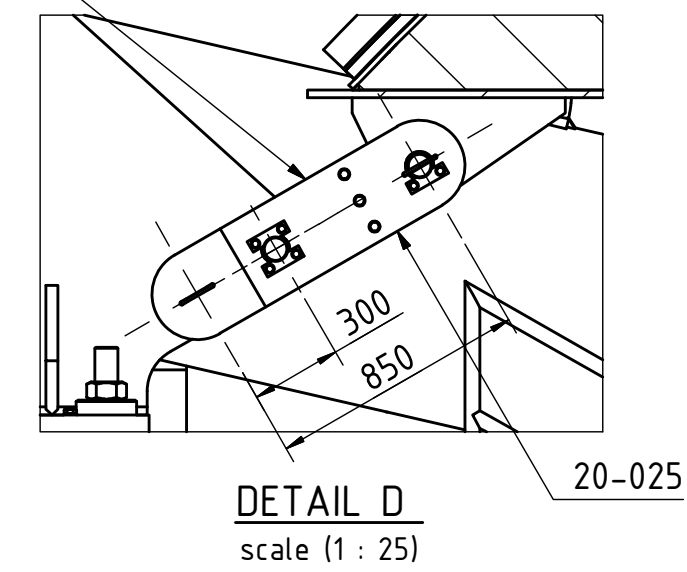


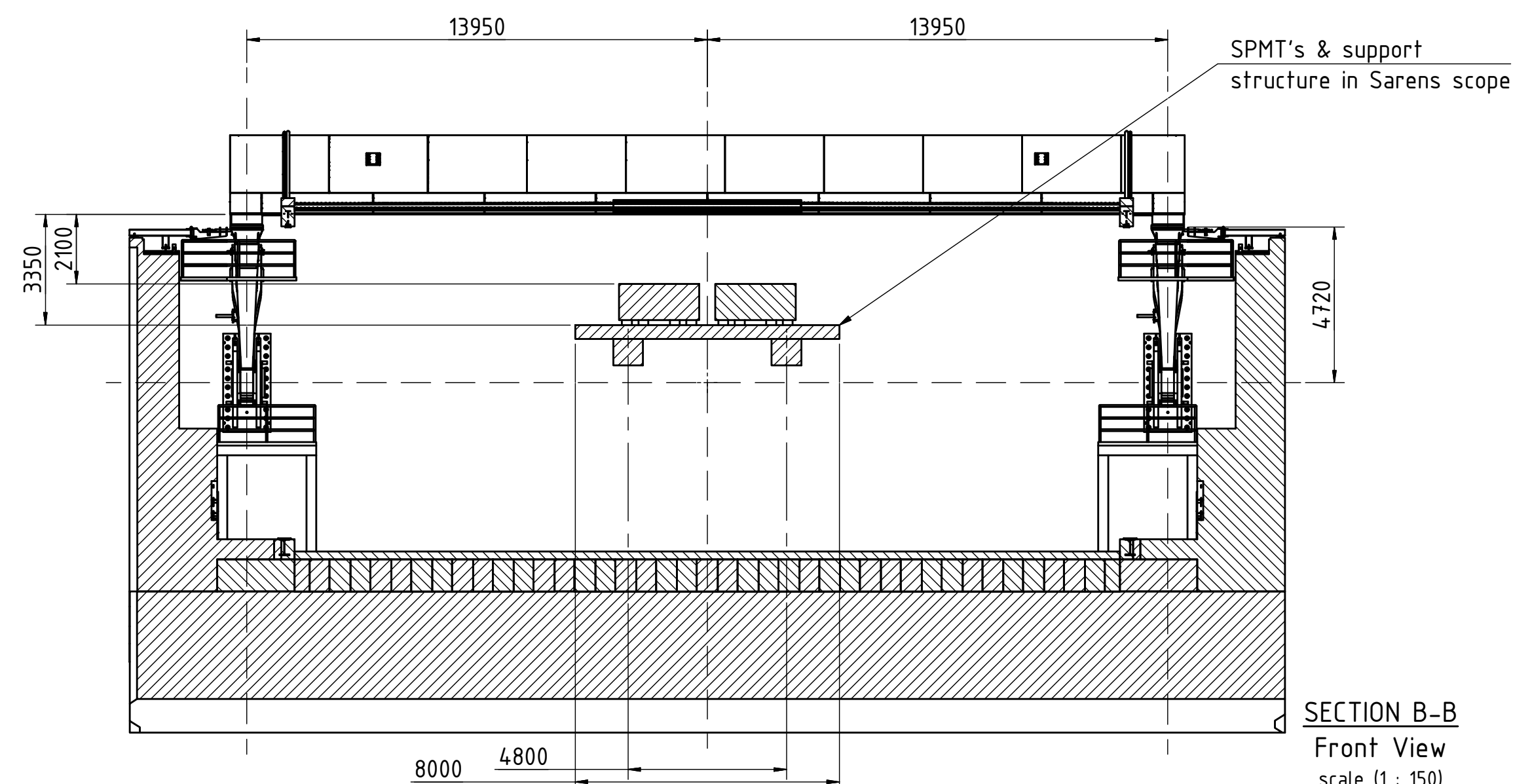
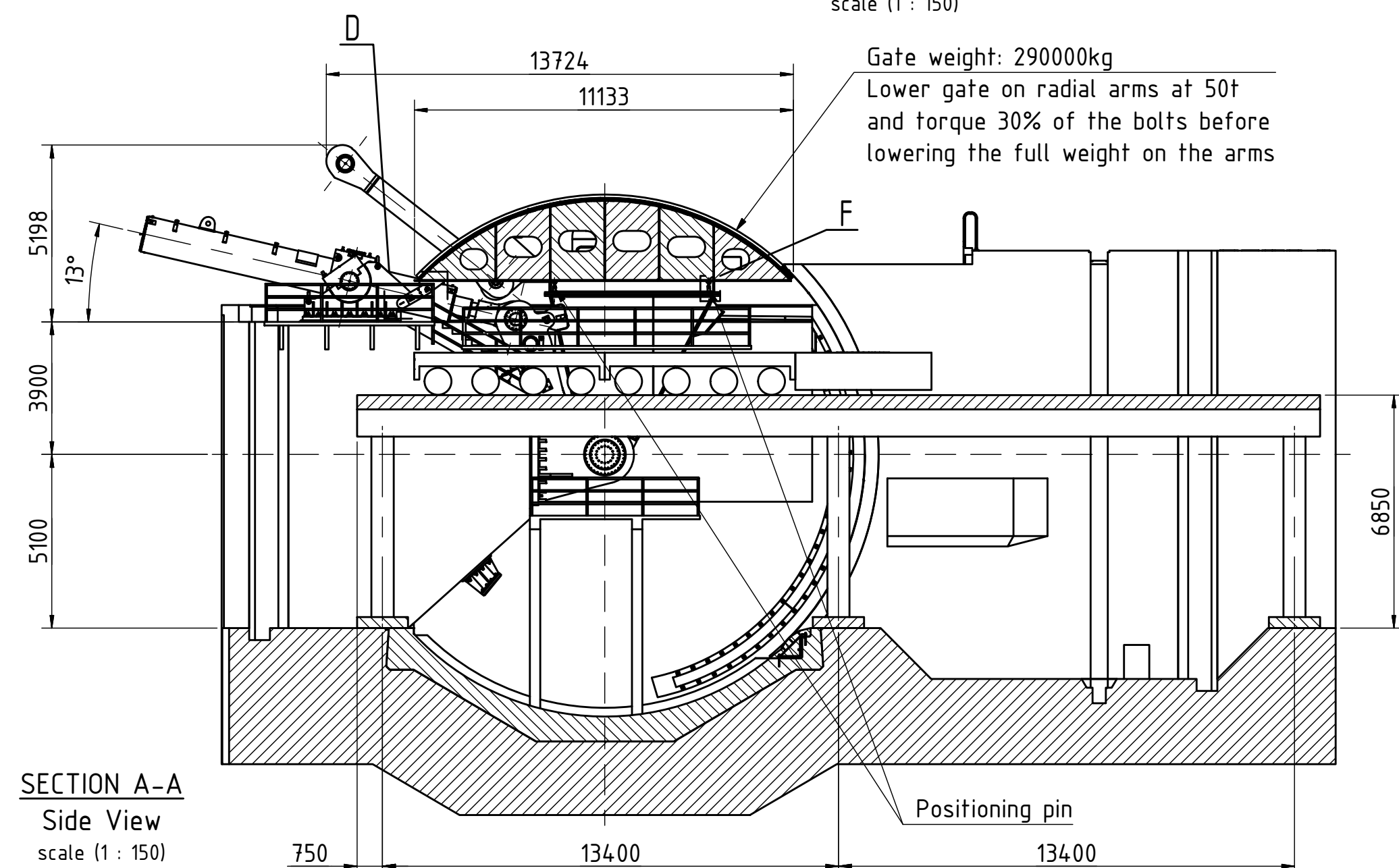
Connect gate with cylinder support by using the dogging assembly before releasing the SPMT's


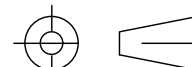



GENERAL NOTES:

Assembly order

1. Lower and position gate on Radial arms by use of the centering pins and tapering pins (see drawing 10-001) until 50t of weight is supported on the radial arms
 2. Install and torque 30% of the bolts
 3. Lower gate completely on the radial arms
 4. Secure gate to cylinder support by using the dogging assembly (See detail D)
 5. Torque all remaining bolts
 6. Disconnect all 4 north-south securing arms (See detail C)
 7. Disconnect the 2 east-west securing arms
- For detailed information of the gate see drawing: 10-902
- For detailed transport information see Sarens drawing: SNL.170114_BARRIER_TRANS_01
- For detailed information of the connection bolts, see drawing 95-020 & 10-001
- For gate weight see drawing 95-005



A		2-9-2019		MBO		FvB		First issue	
Rev.		Date		Drawn		Checked		Description	
<div><div></div><div><p>Hollandia Infra b.v. P.O. Box 12 2920AA Krimpen a/d IJssel Phone: +31 (0) 180-540 540 Fax: +31 (0) 180-519 956</p></div></div>									
Client :		BMMVJ				No part of this drawing may be Reproduced in any form by print, photoprint or used in any other way without written permission from Hollandia Infra b.v.			
Project :		Boston Barrier Project				R is as drawn, L is opp. hand; Projection 			
Title :		Step 8: Assembly Barrier Assembly RSG				Units: mm Geometric Tolerances acc. to: EN 1090-2 annex D Welding symbols acc. to: EN 22553			
Status: Approved for Construction Date: 03-09-19 Checked by:  Florine Huijping-van Bohemen				Scale 1 : 150 Format A1		File name 33951-95-038			REV. A