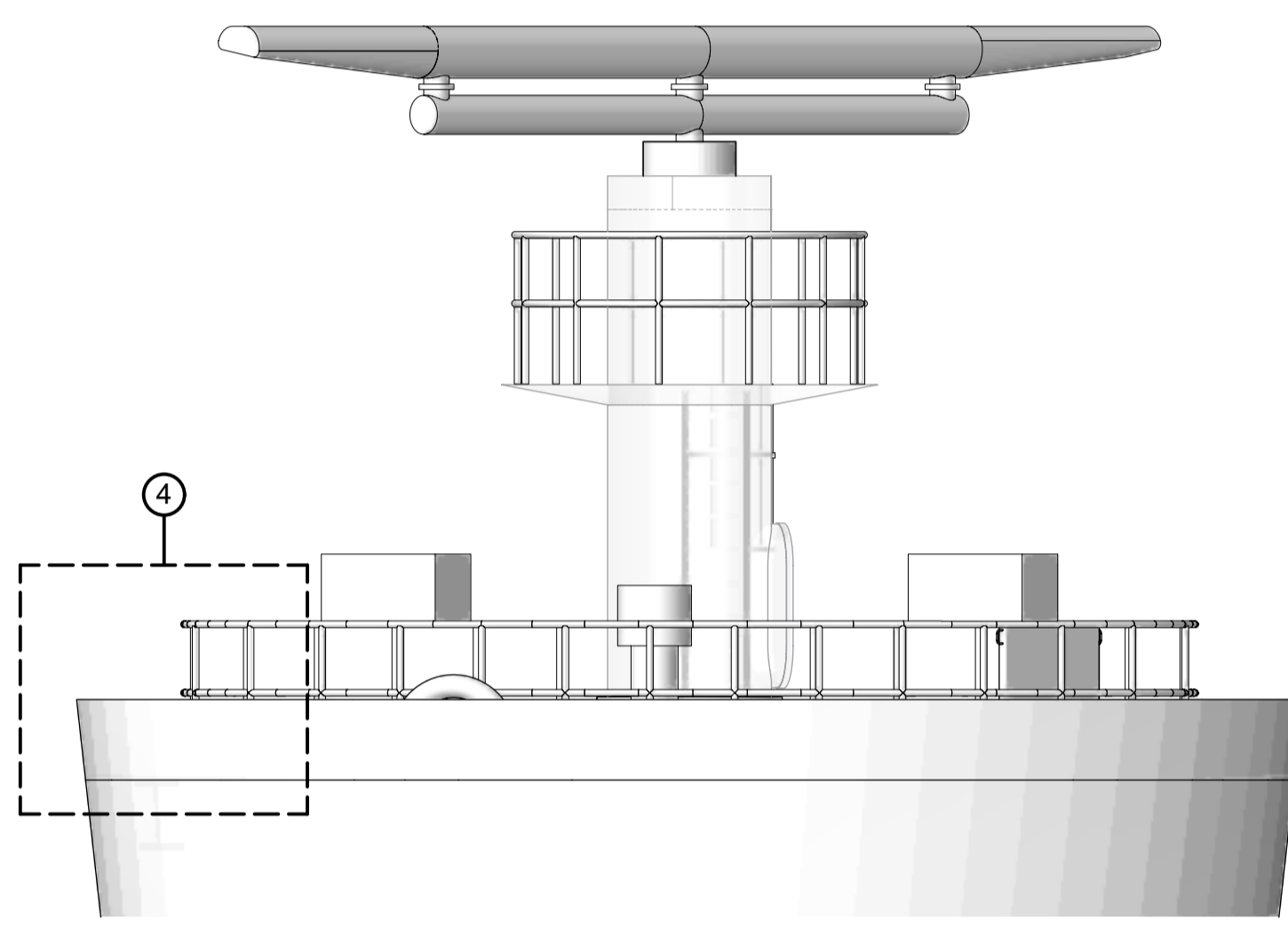
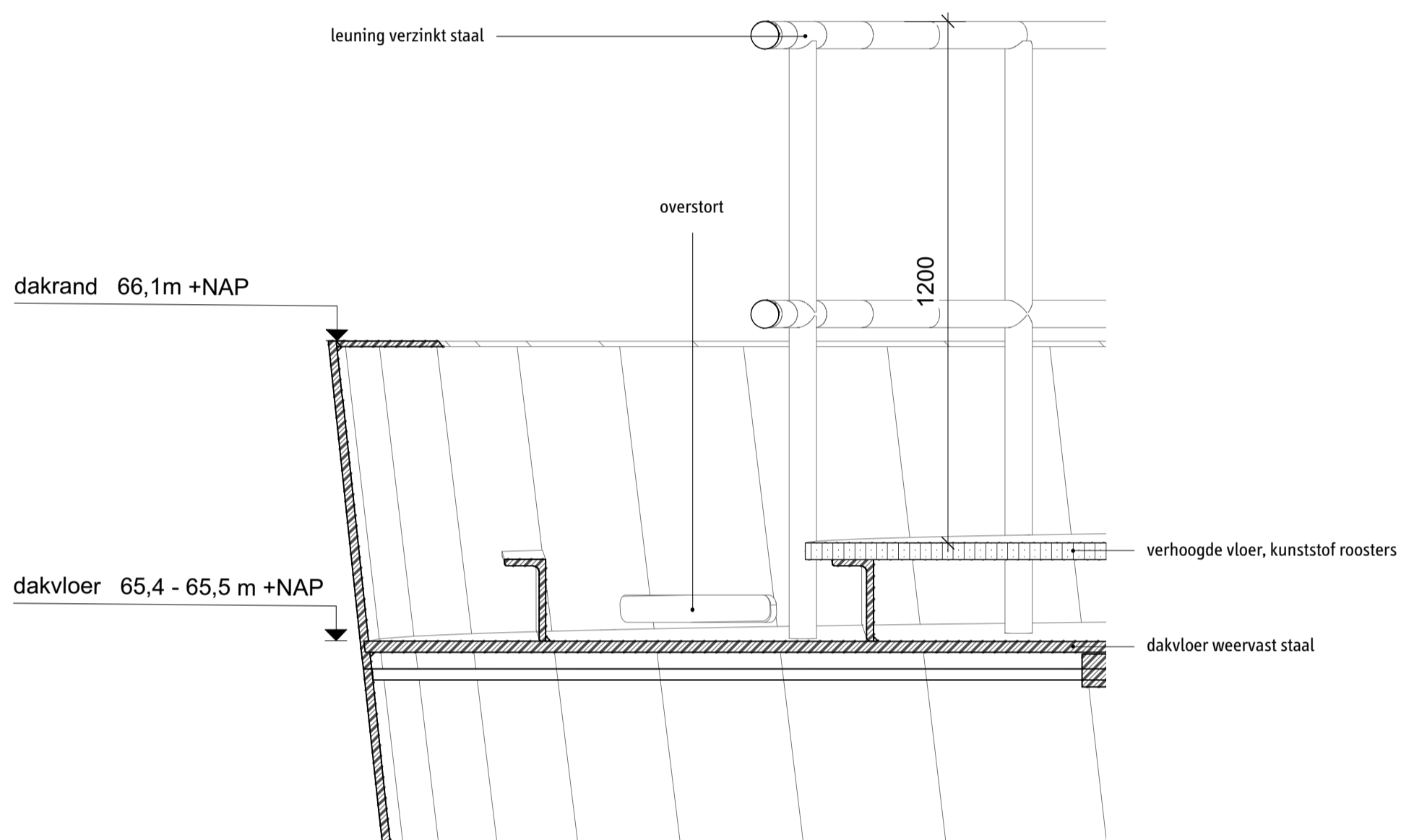
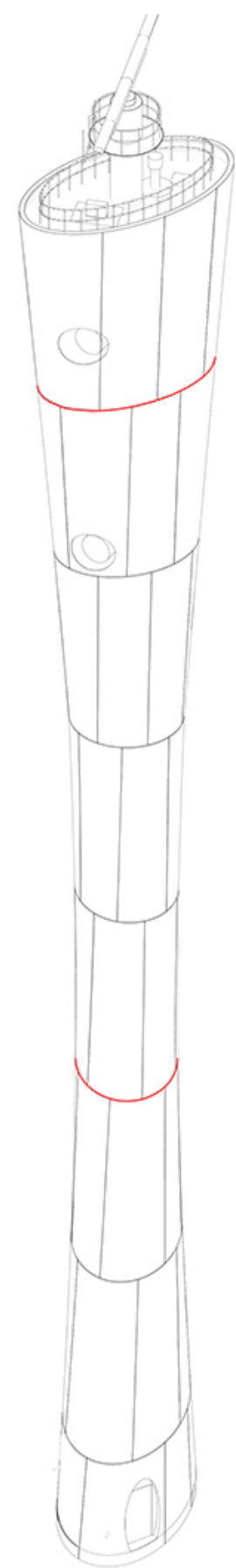
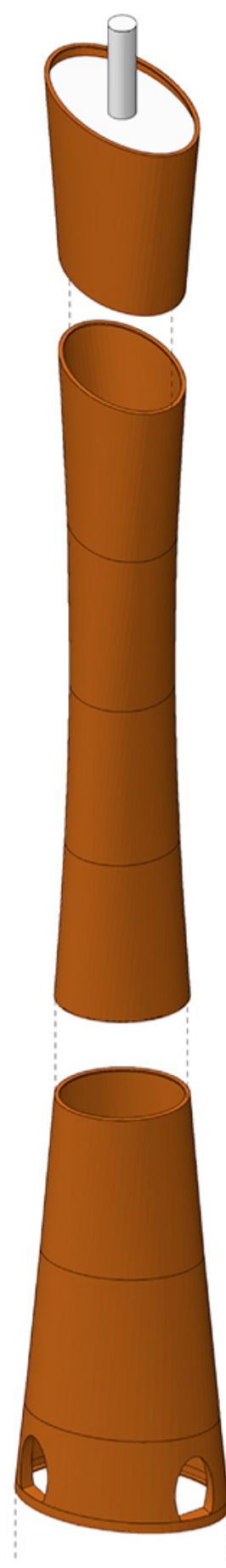
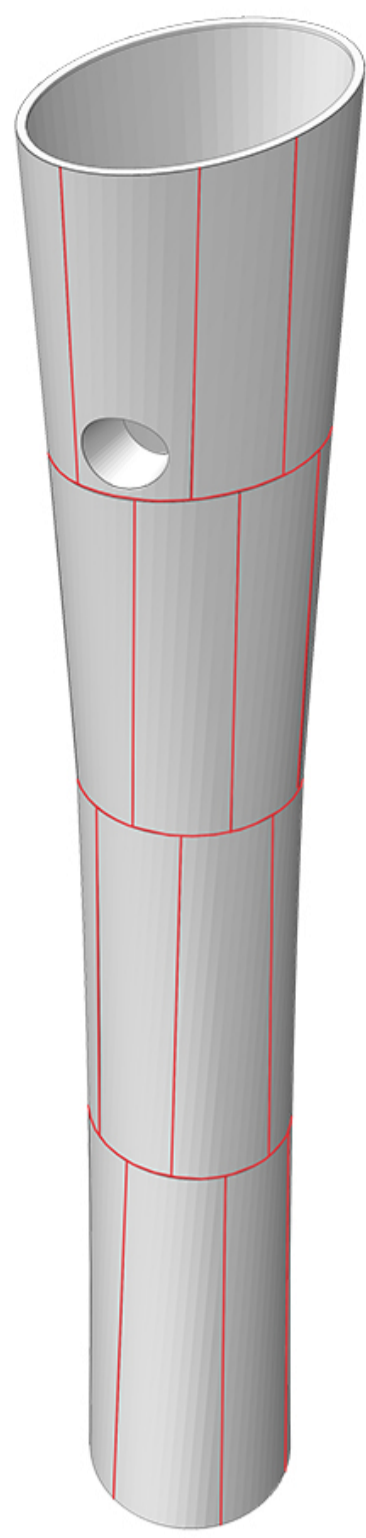
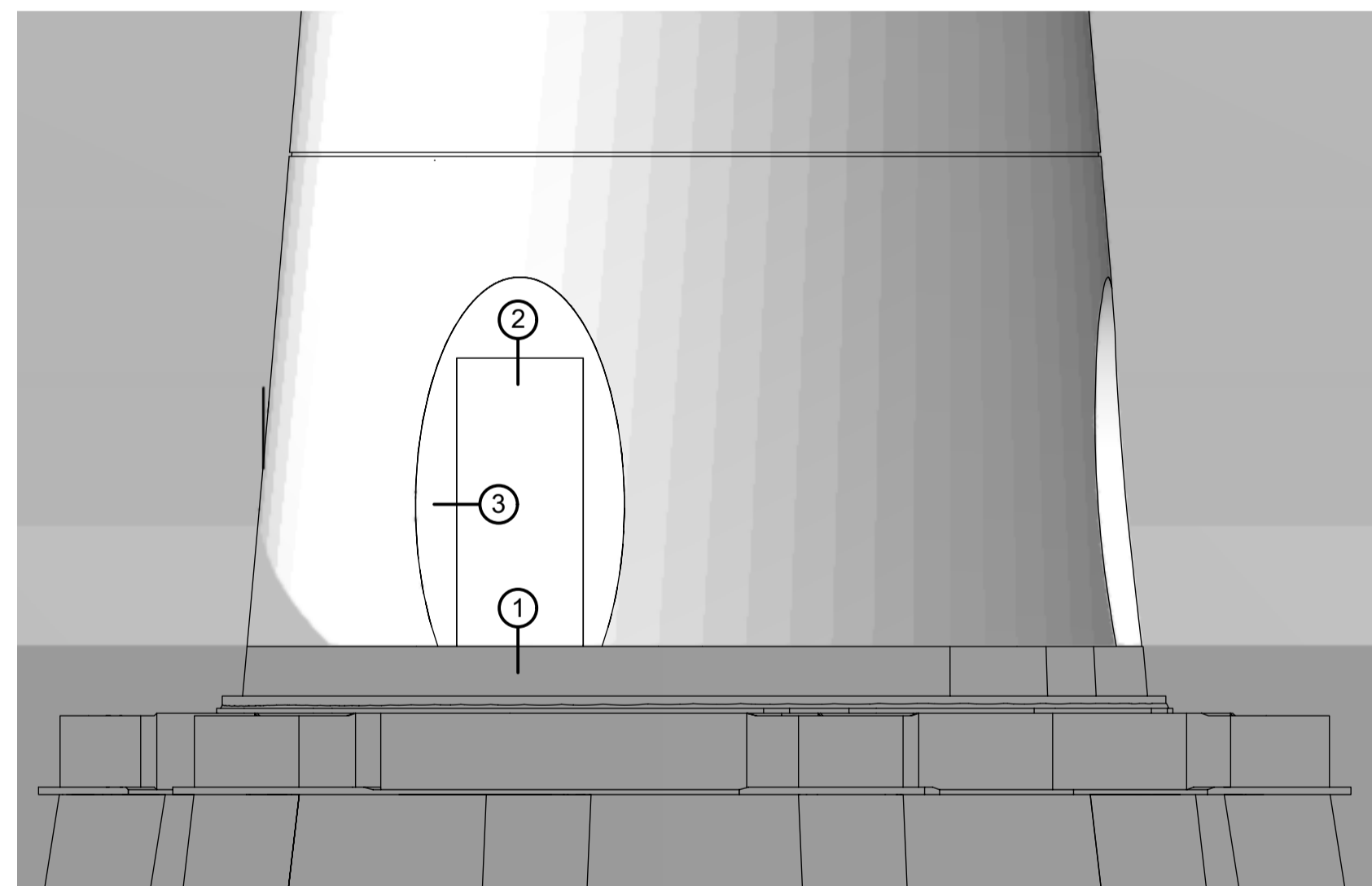
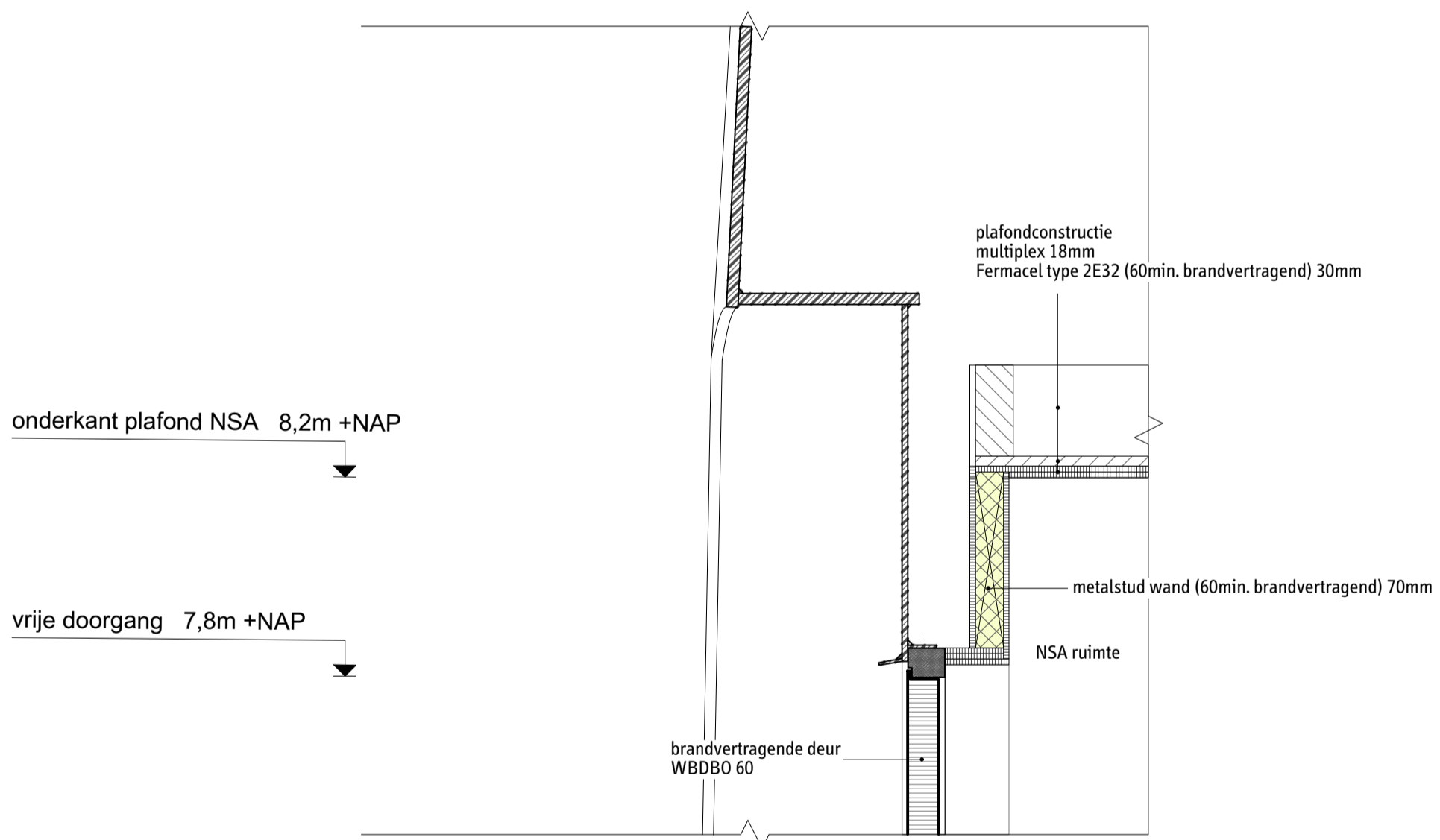


sectiedeel

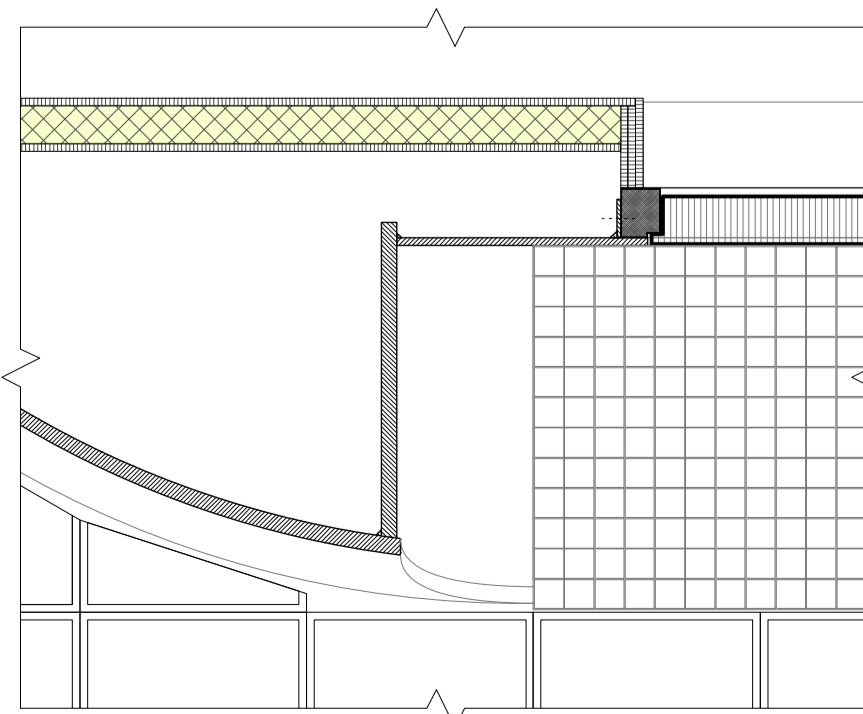
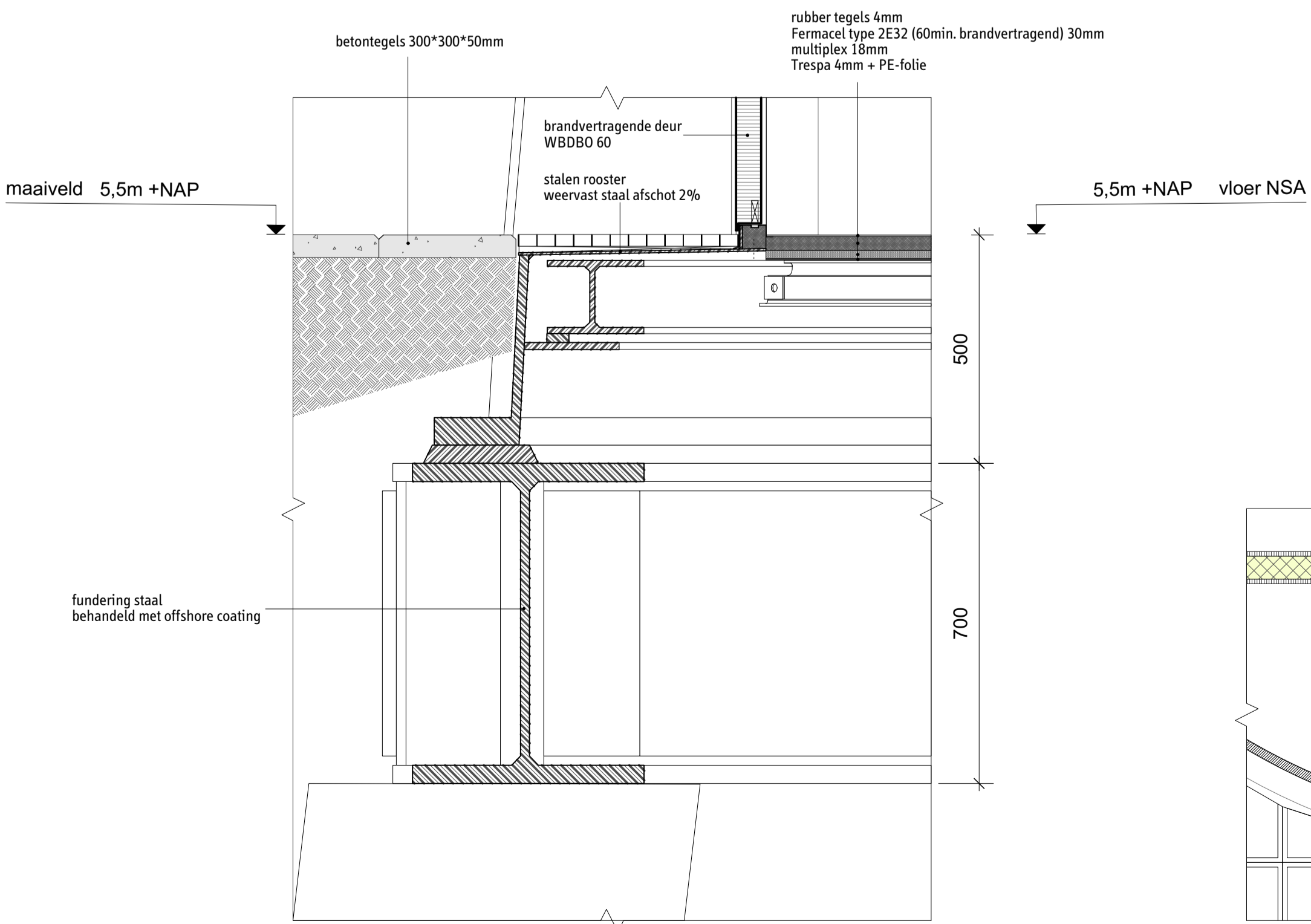


principe detail 4 (1:10)



aanduiding principe details

principe detail 2 (1:10)



principe detail 3 (1:10)

principe detail 1 (1:10)

OPDRACHTGEVER
Havenbedrijf Rotterdam
Postbus 6622

HOOFDAANNEEMER
Hollandia Infra BV
Postbus 12

ARCHITECT
Syb van Breda & Co
postbus 11105

IN SAMENWERKING MET
CIG Centraal Staal
P.O. Box 760

IN SAMENWERKING MET
Istimeva Elektro
Postbus 9

IN SAMENWERKING MET
PT-Structural
Boelewerf 22

IN SAMENWERKING MET
Services
Postbus 170

IN SAMENWERKING MET
Tauw
Postbus 133

LOCATIE
Pr. Maksimaweg, Rotterdam

FASE
Bouwaanvraag

DATUM
03-04-17

STATUS
DO

REVISIE
v1

FORMAAT
A1

OPDRACHTGEVER
Port of Rotterdam
3072 AP Rotterdam

HOOFDAANNEEMER
HOLLANDIA INFRA
2920 AA Krimpen aan den IJssel
info@hollandiainfra.nl

ARCHITECT
Syb van Breda & Co
2301 EC Leiden
office@sybvanbreda.com

IN SAMENWERKING MET
CIG CENTRAAL STAAL
9700 AT Groningen
info@cig-eu.com

IN SAMENWERKING MET
ISTIMEVA
4380 AA Vlissingen
info@istimeva.nl

IN SAMENWERKING MET
PT-STRUCTURAL
2987VD Ridderkerk (Bolsnes)
info@pt-structural.com

IN SAMENWERKING MET
services
3190 AD Hoogvliet - Rotterdam
info@services.nl

IN SAMENWERKING MET
Tauw
7400 AC Deventer
info@tauw.nl

TEKENINGNUMMER
1613_5