

# Faculty Club

Tilburg University

**Shift** *architecture  
urbanism*

Delftsestraat 9 c  
3013 AB Rotterdam  
The Netherlands

t. +31 (0)10 41 40 181  
f. +31 (0)10 41 46 843  
e. [info@shifta.nl](mailto:info@shifta.nl)  
w. [www.shifta.nl](http://www.shifta.nl)



## **Faculty Club, Tilburg University, by Shift architecture urbanism**

Tilburg University has extended its campus with the Faculty Club, a multipurpose pavilion for the academic staff and their guests. Shift architecture urbanism took the initiative to reanimate the quintessential quality of the Tilburg campus: strong solitary buildings in the green. The monumental modernism of Jos Bedaux served as a frame of reference. Bedaux designed the first - still the best - buildings for the university in the sixties.

By creating a strong formal relation between the existing university buildings and the new Faculty Club, an ensemble of omni-directional solitaires is created. This enables one to recognize the Faculty Club as part of the university, despite its peripheral forest location and exclusive program.

The Faculty Club is designed as a carved-out-monolith, one simple box in which transparency and massiveness melt together. The central restaurant is carved out from the centre, creating a tunnel-effect in the front façade. In order to strengthen its solitaire character the building is lifted from the ground. The height difference is bridged by outside stairs and a ramp integrated within the front façade.

Each façade has only one window. By recessing each window, outdoor spaces are created within the front and rear façades. These mark the entrance in front and form a large covered terrace in the back. The simplicity and plasticity of the three-dimensional window treatment further contributes to the building's sculptural qualities.

The primary program consists of a restaurant for eighty persons, a lounge and two conference rooms. The secondary program consists of a kitchen, storage space and other services. The further the functions are situated from the campus, the more intimate and informal the space becomes. The conference rooms look out over the campus, while the lounge completely relates to the forest and the garden. All main functions are physically linked by a transparent axis running the length of the building.

Both the lounge and the restaurant are connected to the carved-out terrace situated at the rear of the building. A four-rail system of sliding windows enables one to open up two-thirds of the total eighteen meters of glass façade. This intensifies the experience of the forest without the visitor having to step outside the building envelope.

The construction principles of the Faculty Club are deceptively simple. In order to emphasize contrasting space and mass, the structure, installations and details are integrated within walls and floors. The starting point for the engineering was the visual absence of technique. Key contractors and consultants were engaged early in the process of preliminary design, enabling the development of precise and project-specific details that consistently support the overall concept. Shift architecture urbanism was responsible for the design, including the execution drawings and the site supervision.

The result is an integral, durable and engaging building. A monolith carved in such a way as to both profit and profit from the surrounding landscape while maintaining its distinct primary form. Its architecture refers to the heritage of Jos Bedaux by abstracting and updating his formal language. This makes the building into a solitary solitaire, sober and luxurious, massive and transparent, silent and outspoken.

Text: Harm Timmermans, Shift architecture urbanism  
Photography: René de Wit, if otherwise it is stated

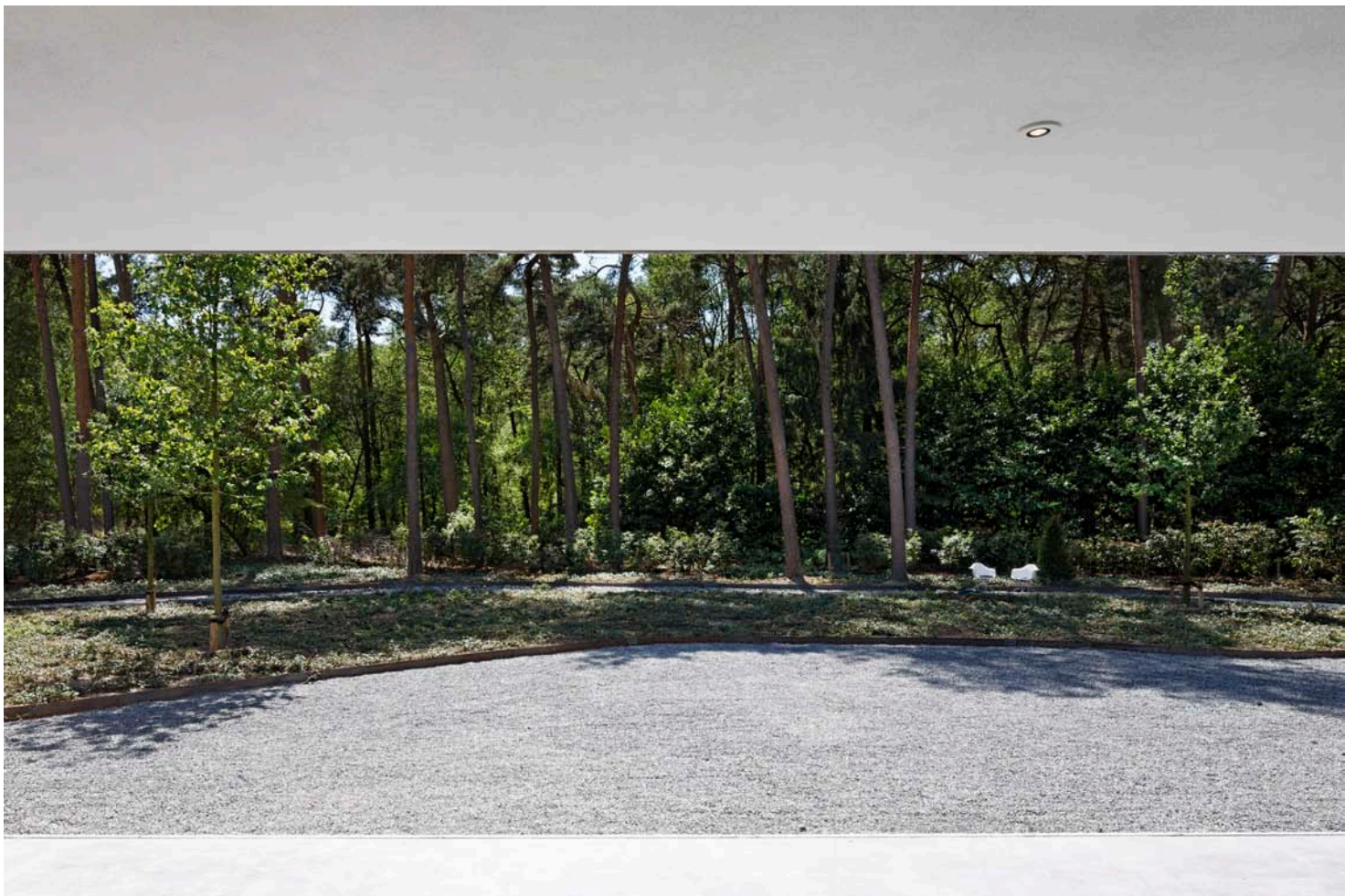
## Project data:

Client:	Tilburg University
Design:	Shift architecture urbanism, Rotterdam
Project architects:	Harm Timmermans and Pieter Heymans
Collaborators:	Sabine Hogenhout, Bahar Akkoclu and Tjeerd Bloothoofd
Developer:	Van der Weegen Bouwontwikkeling, Tilburg
Main contractor:	Van der Weegen Bouwgroep, Tilburg
Construction:	Bartels, Eindhoven
Installations:	Van Delft Installaties, Nieuwkuijk
Stone façade:	Van Stokkum Natuursteen, Venlo
Glass façade:	MHB, Herveld
Fixed interior:	Smeulders IG, Nuenen
Concrete floor:	Van Kempen Bedrijfsvloeren, Bergeijk
Garden:	Van Helvoirt Groenprojecten, Berkel Enscht
Lighting:	Philips Lighting and Living Projects
Furniture:	Brokx Projectinrichting, Oosterhout with Vitra
Garden design:	MTD, Den Bosch
Garden realisation:	Van Helvoirt Groenprojecten, Berkel Enscht
Gross area:	Inside space: 518m <sup>2</sup> Outside space: 110m <sup>2</sup>
Adress:	Warandelaan 3, Tilburg
Delivery:	june 2011
Stone façade:	Limestone, type: Muschelkalk
Glass façade:	Anodized aluminium, type MHB-Skyframe with Saint Gobain glazing
Ceiling:	Acoustic stucco, OWA
Lighting:	LED, Philips
Furniture:	Vitra





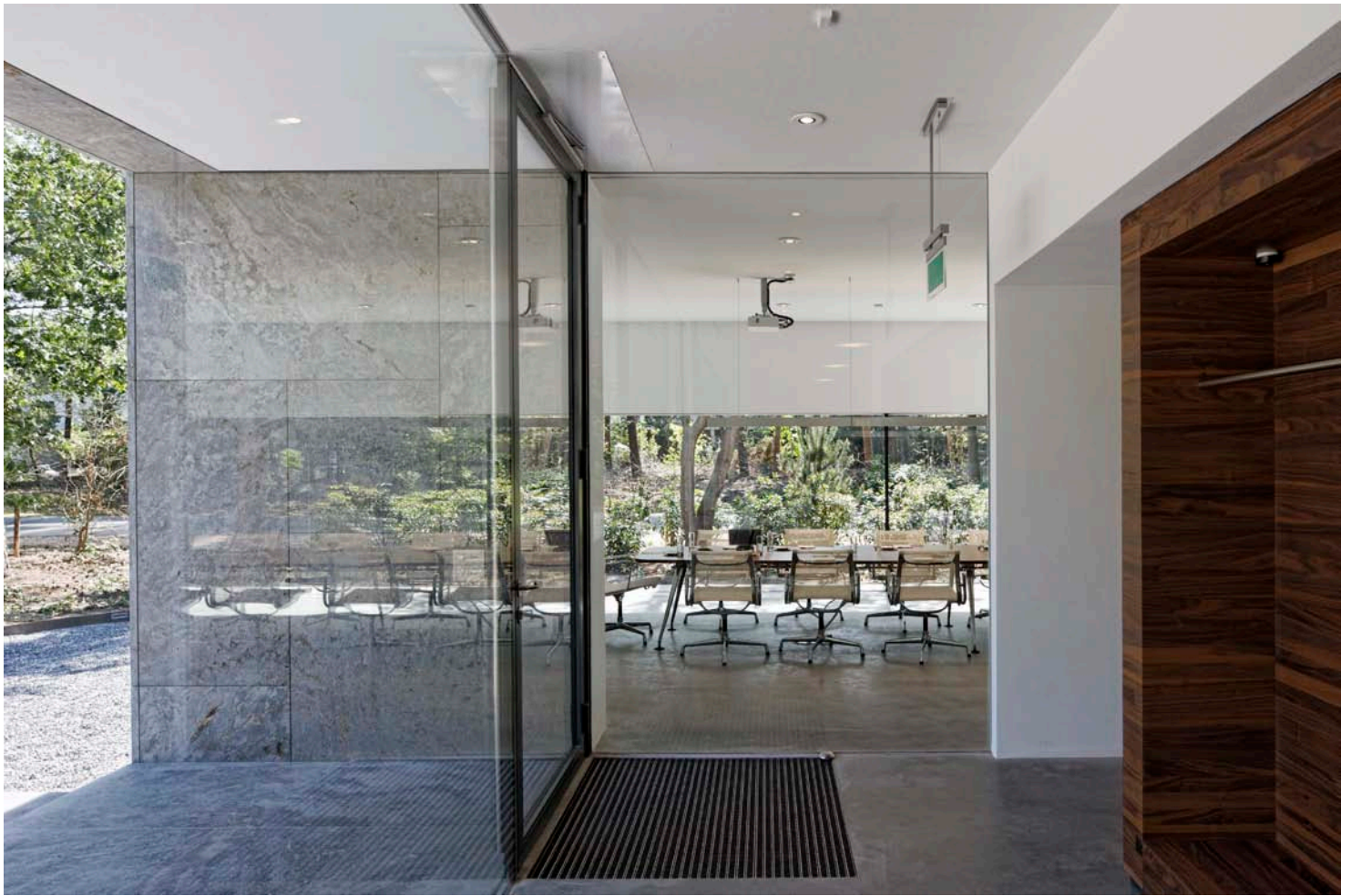






















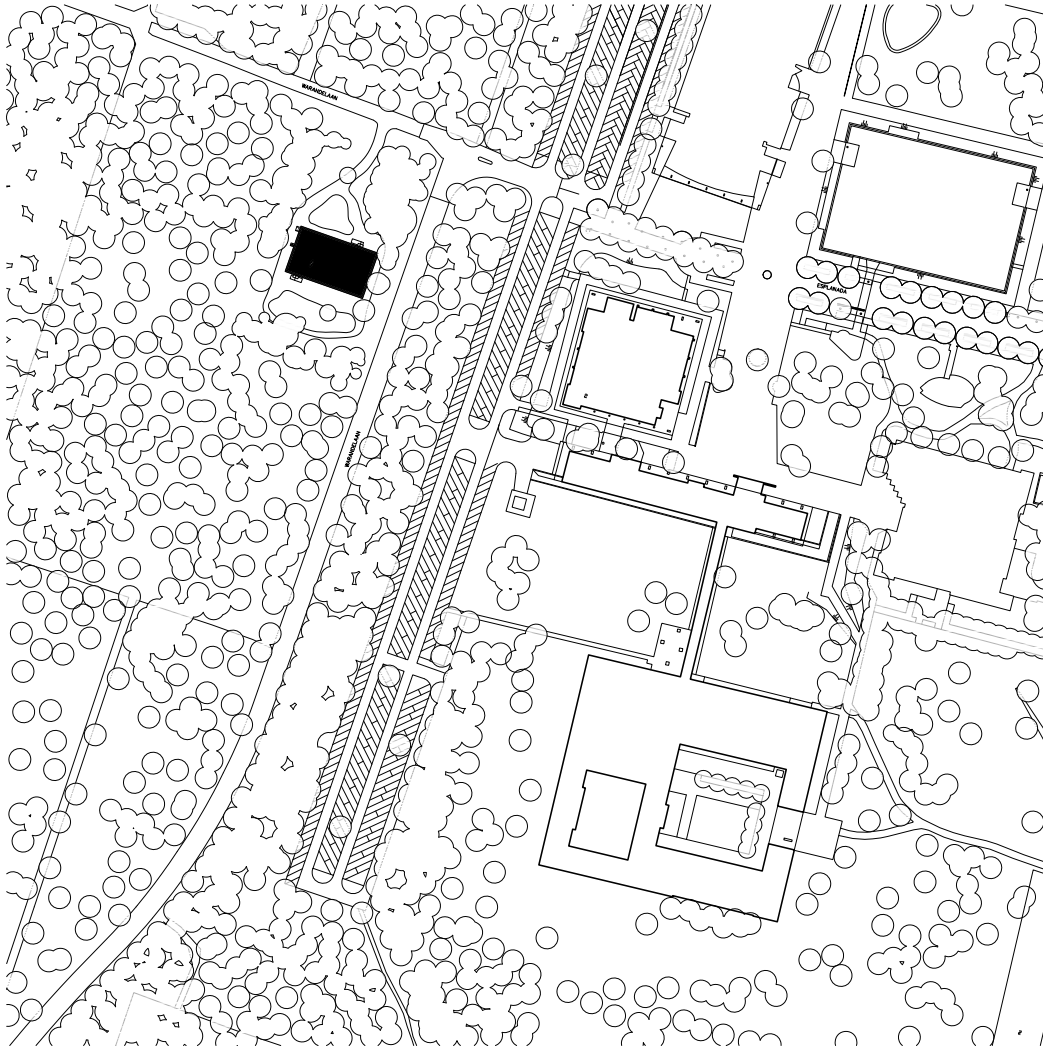






historic photos main buildings Tilburg University by Jos Bedaux  
photography: Archive Jos Bedaux (approved for publication)

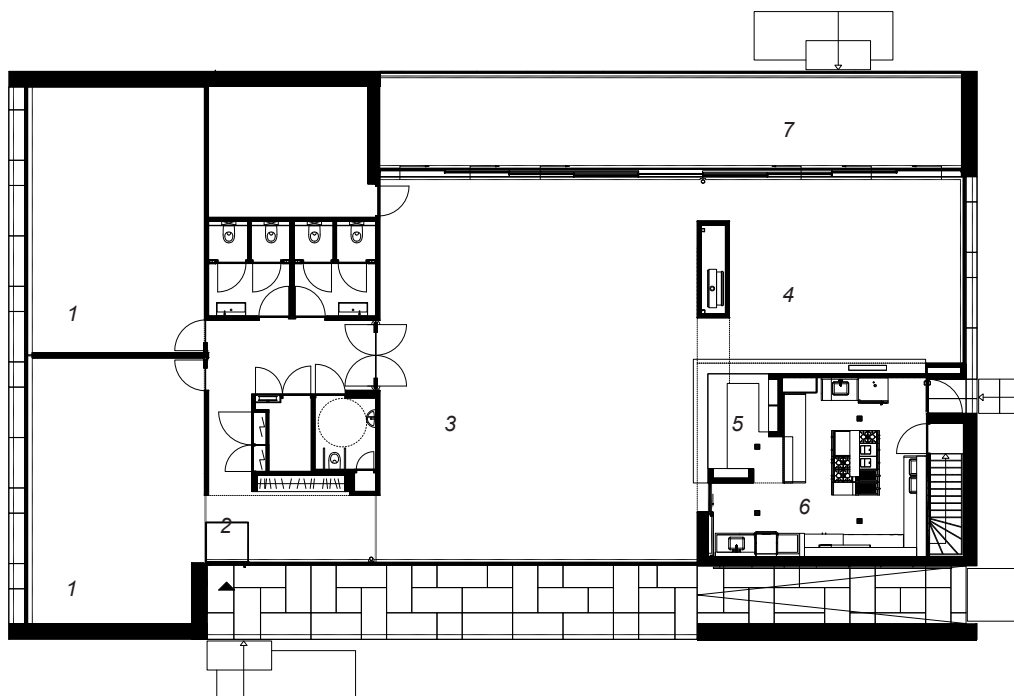




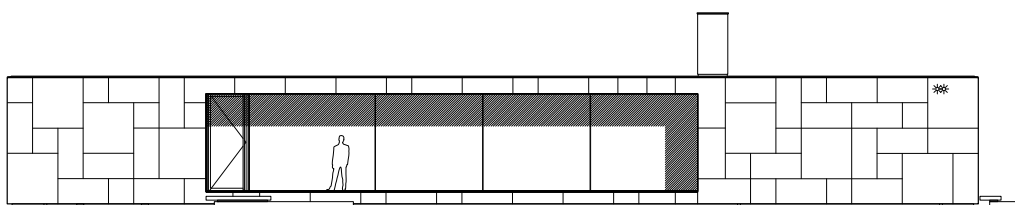
situation



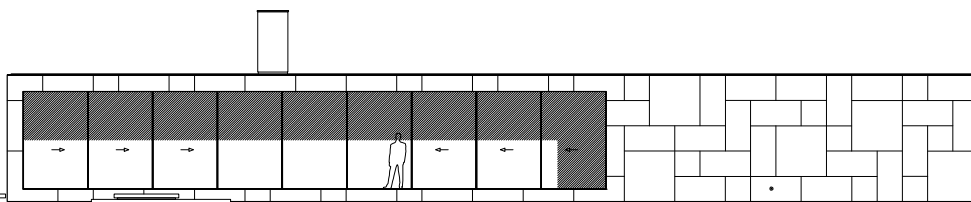




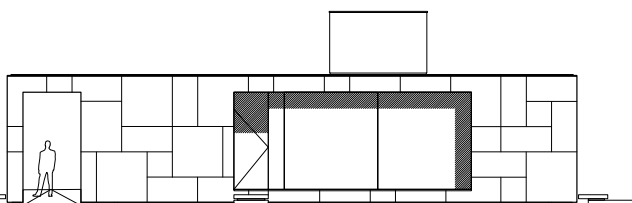
plan



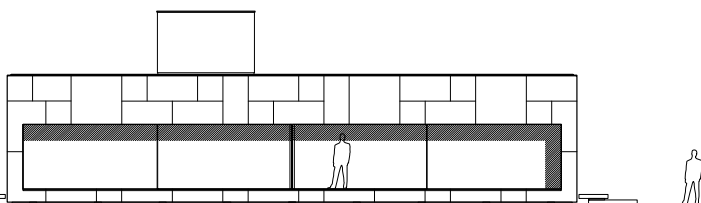
elevation front



elevation rear

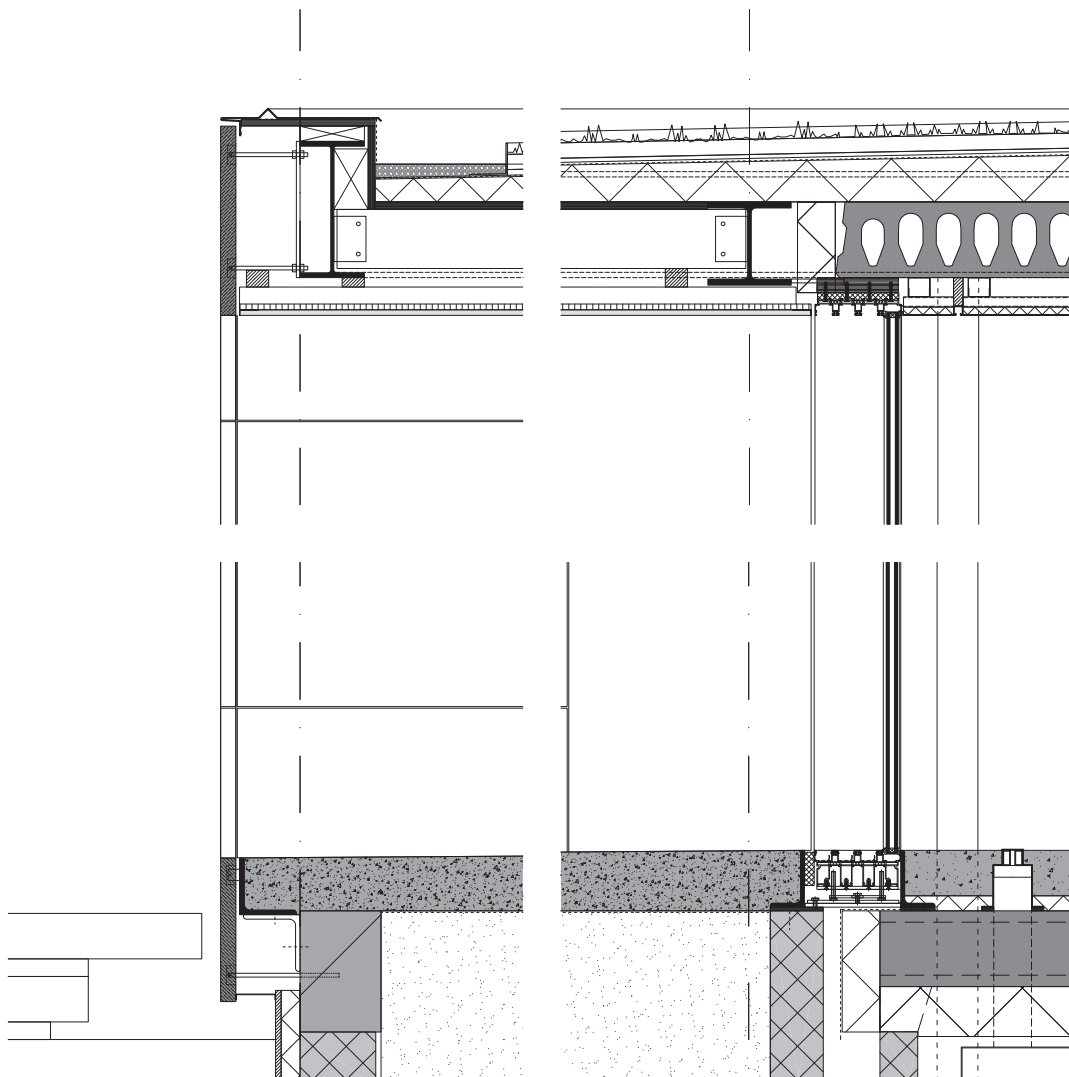


elevation right

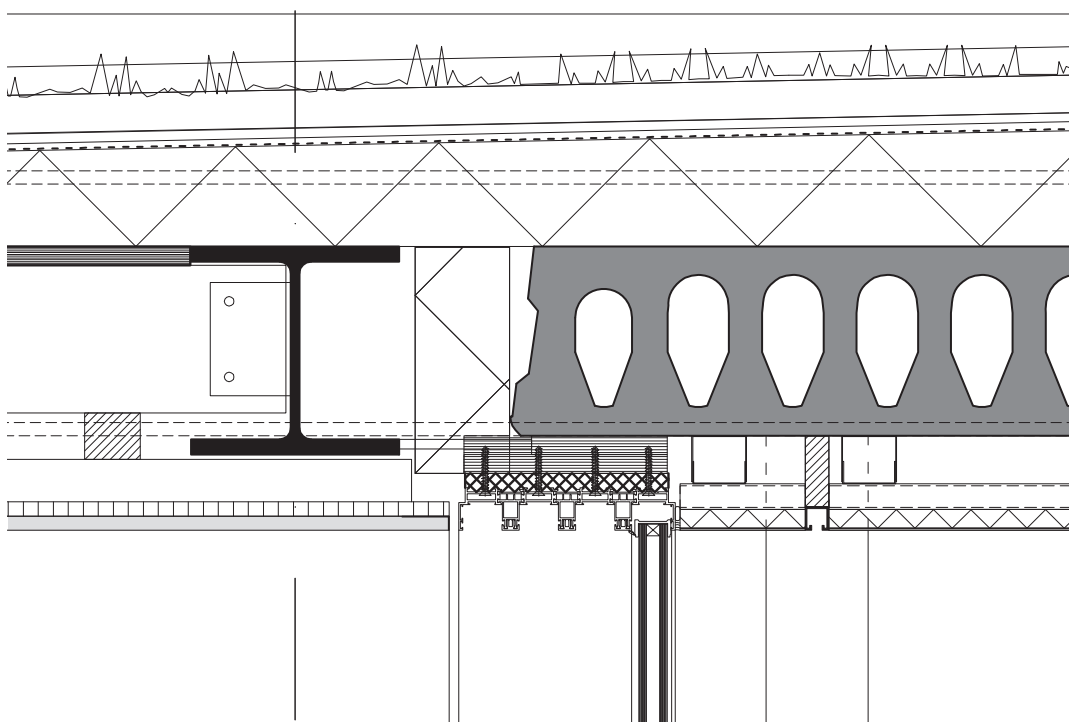


elevation left



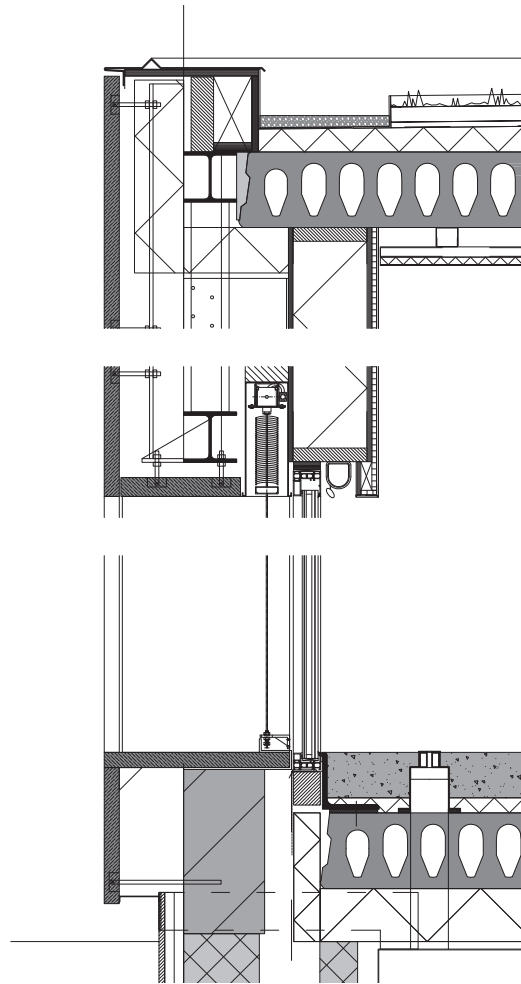


vertical details covered terrace and sliding window

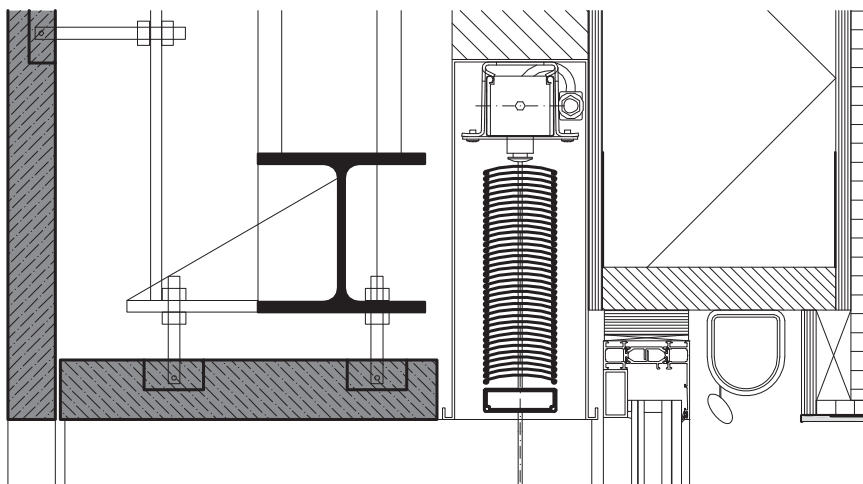


vertical detail sliding window



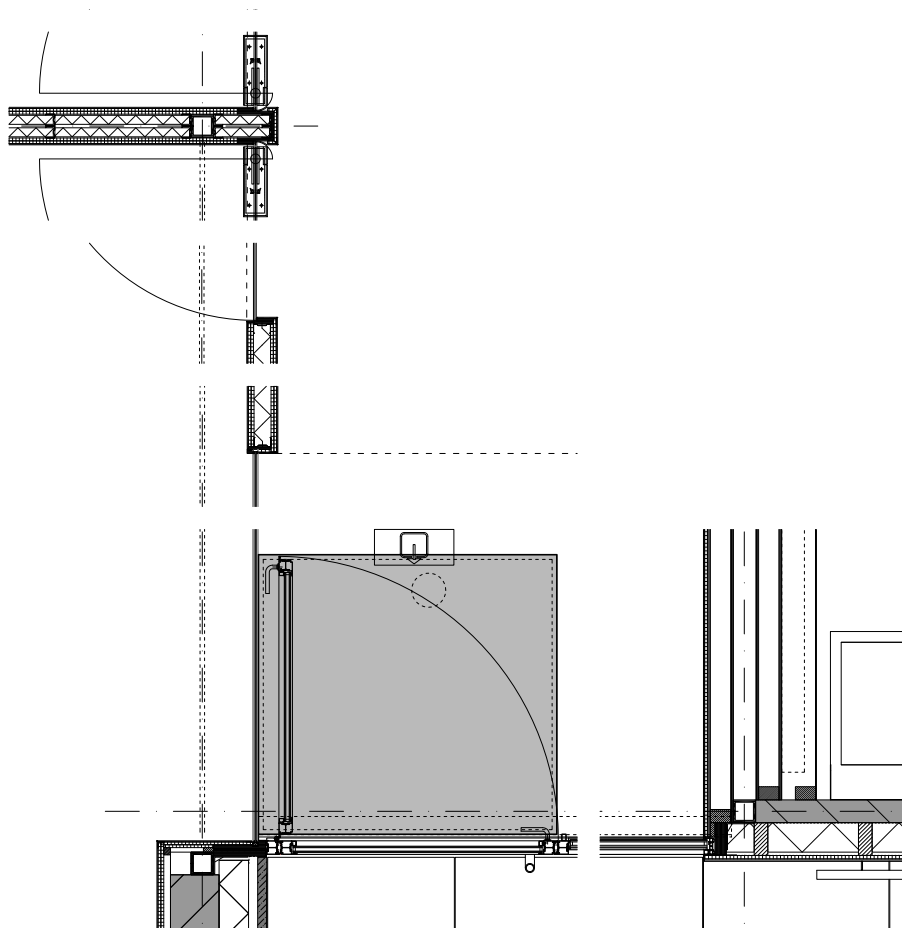


vertical details left façade

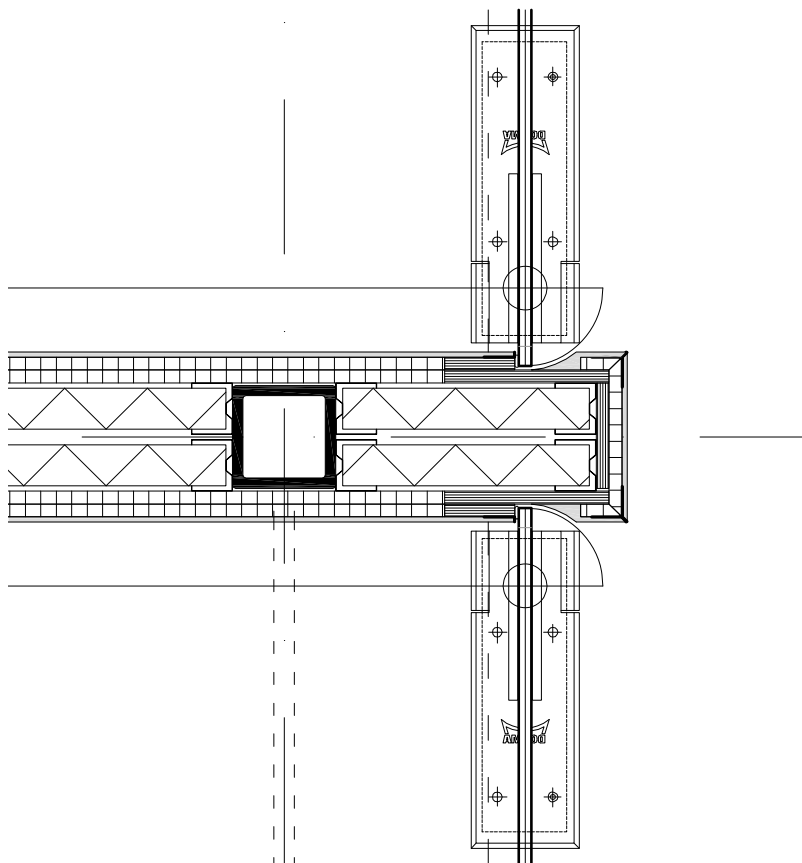


vertical detail window of conference room with integrated screenings



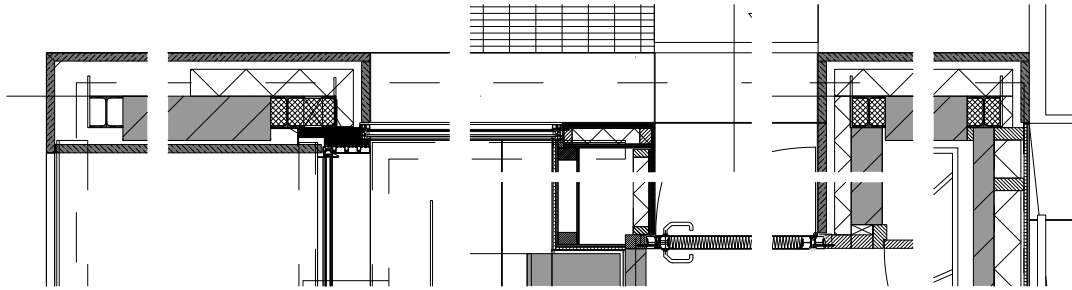


horizontal details front façade and entrance

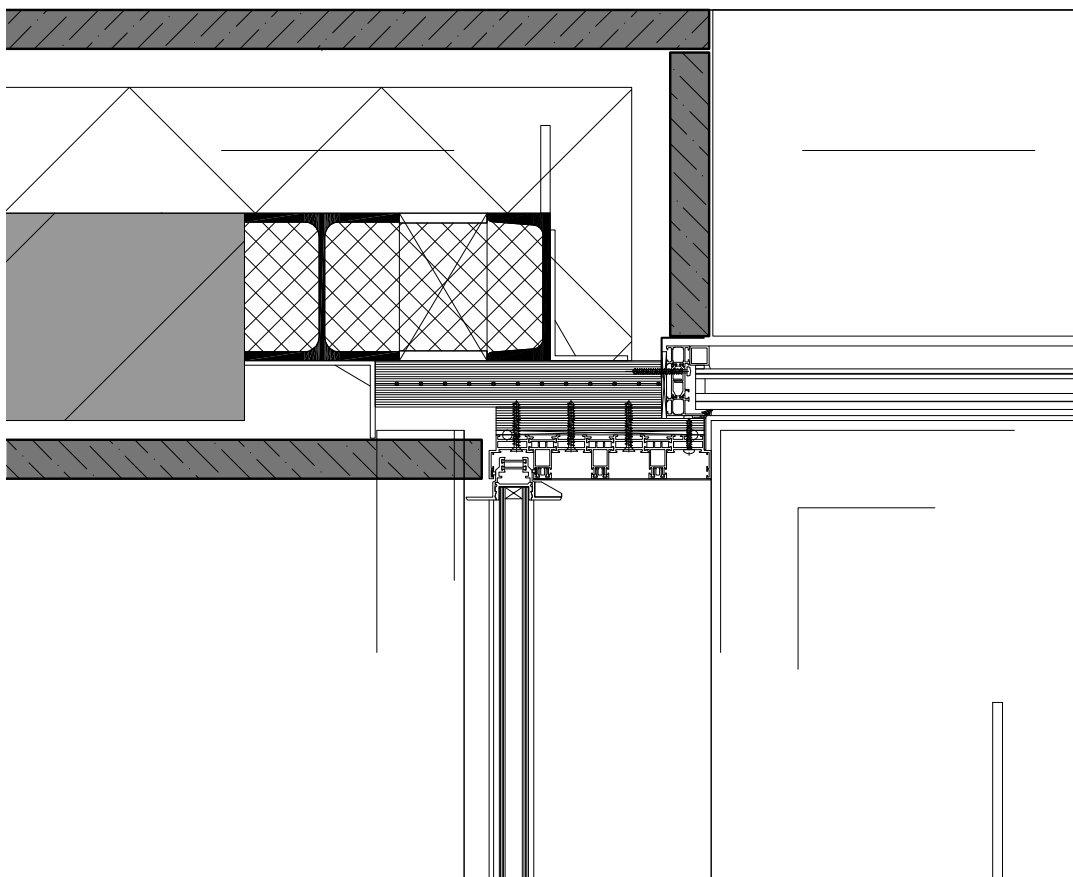


horizontal detail glass doors of conference rooms with rabbet integrated in stucco wall





horizontal details right façade



horizontal detail connection of sliding windows to natural stone panels and fixed glass