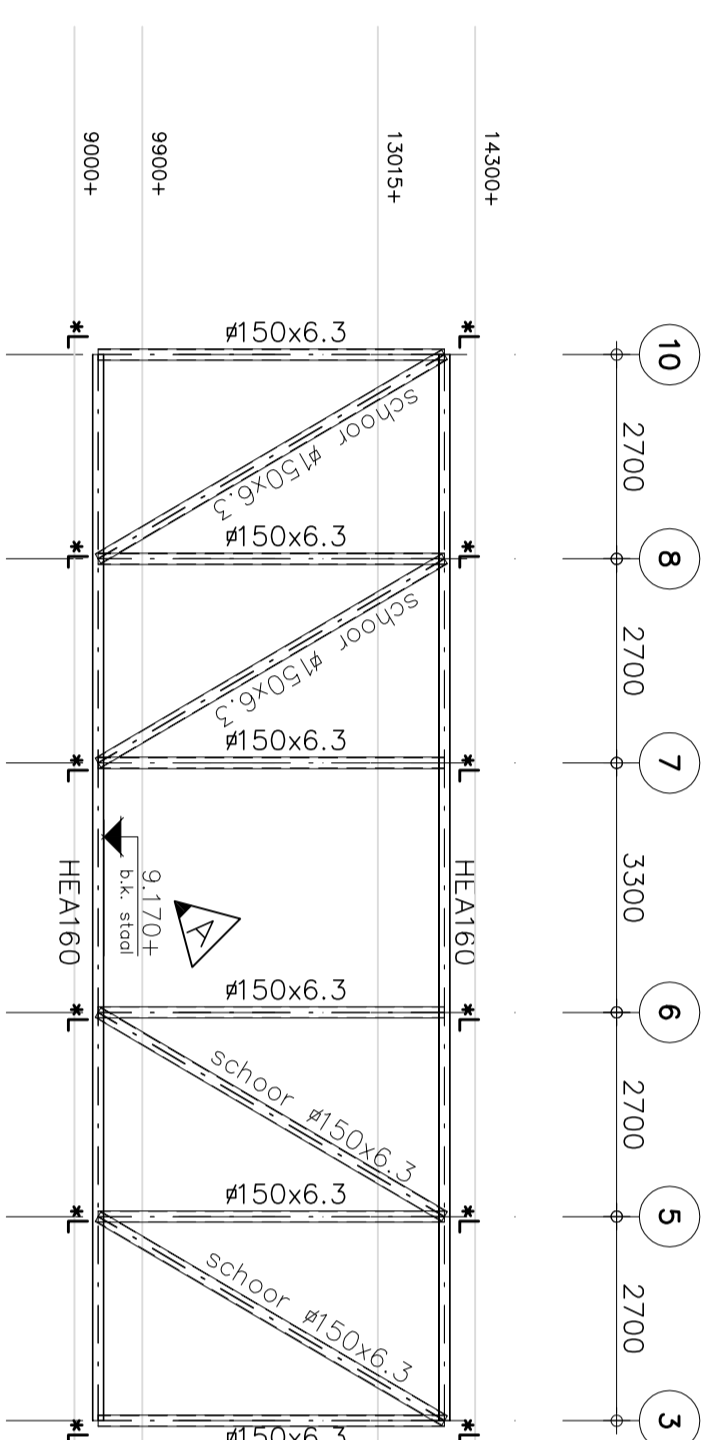
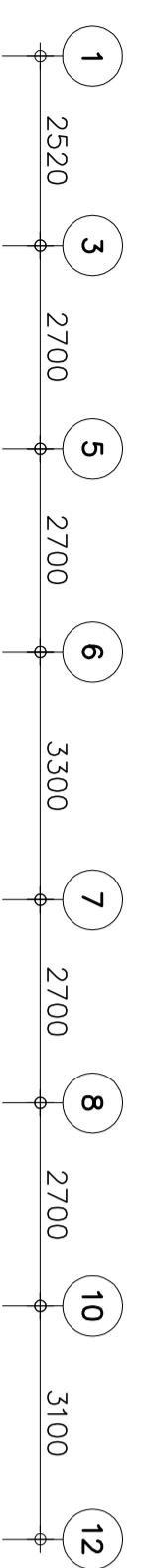


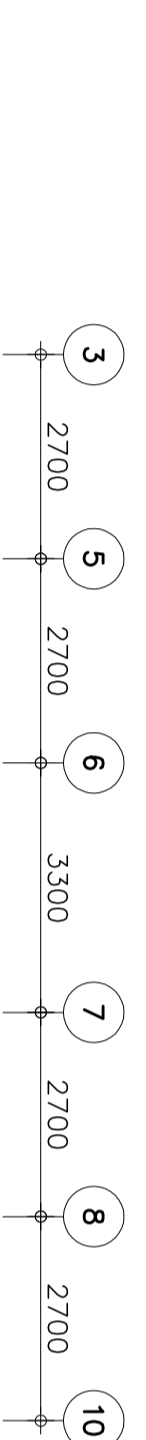
Gevelaanzicht op as A



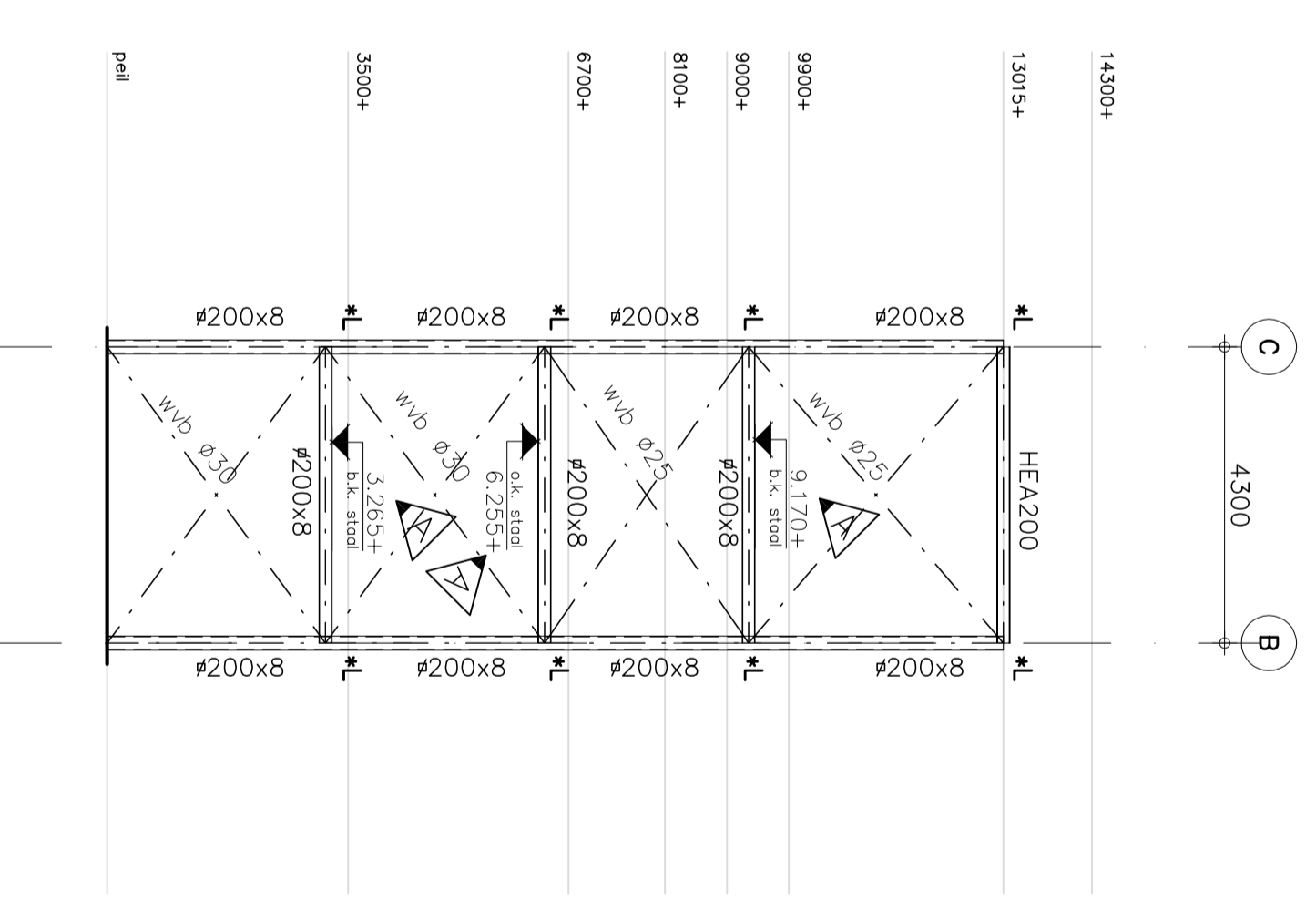
Gevelaanzicht op as J



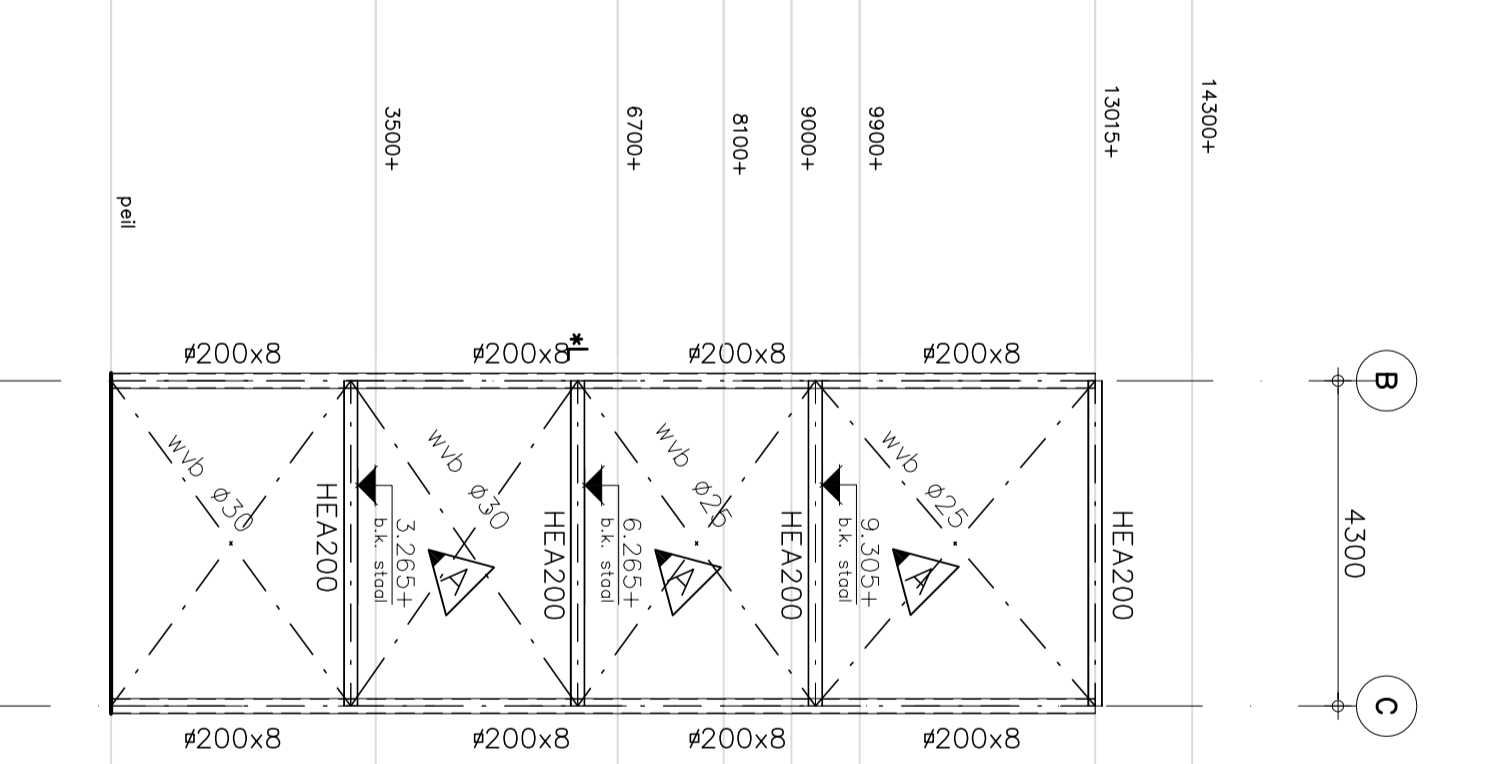
Gevelaanzicht op as B



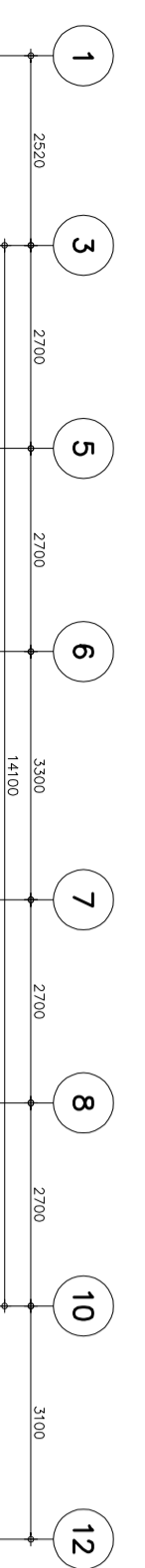
Gevelaanzicht op as H



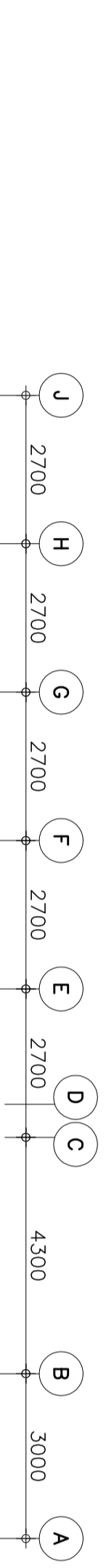
Gevelaanzicht op as 1



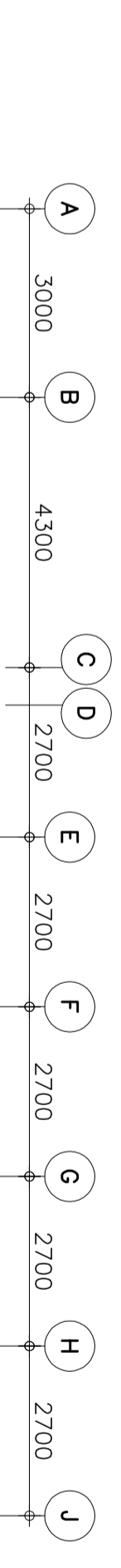
Gevelaanzicht op as 12



Gevelaanzicht op as C



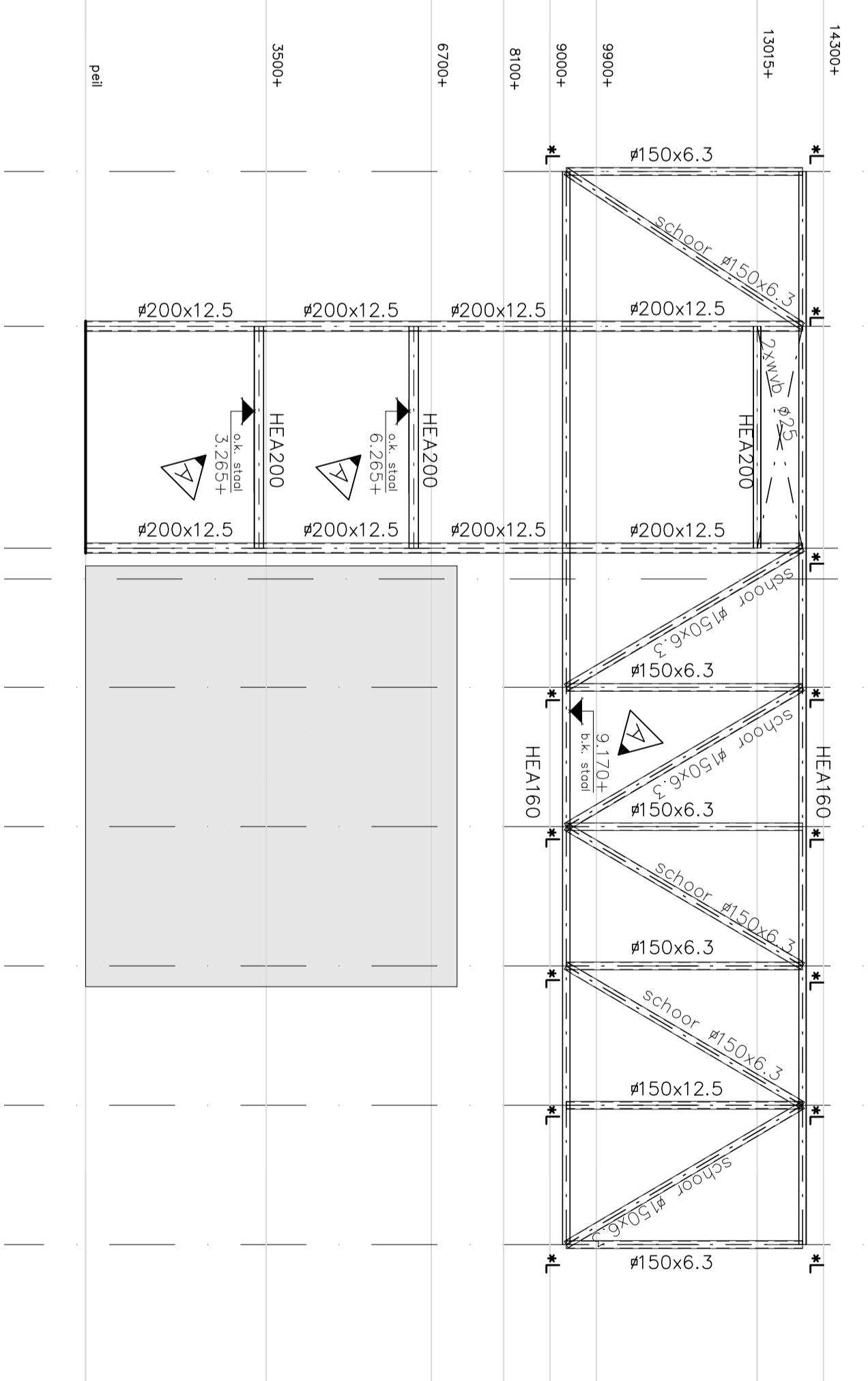
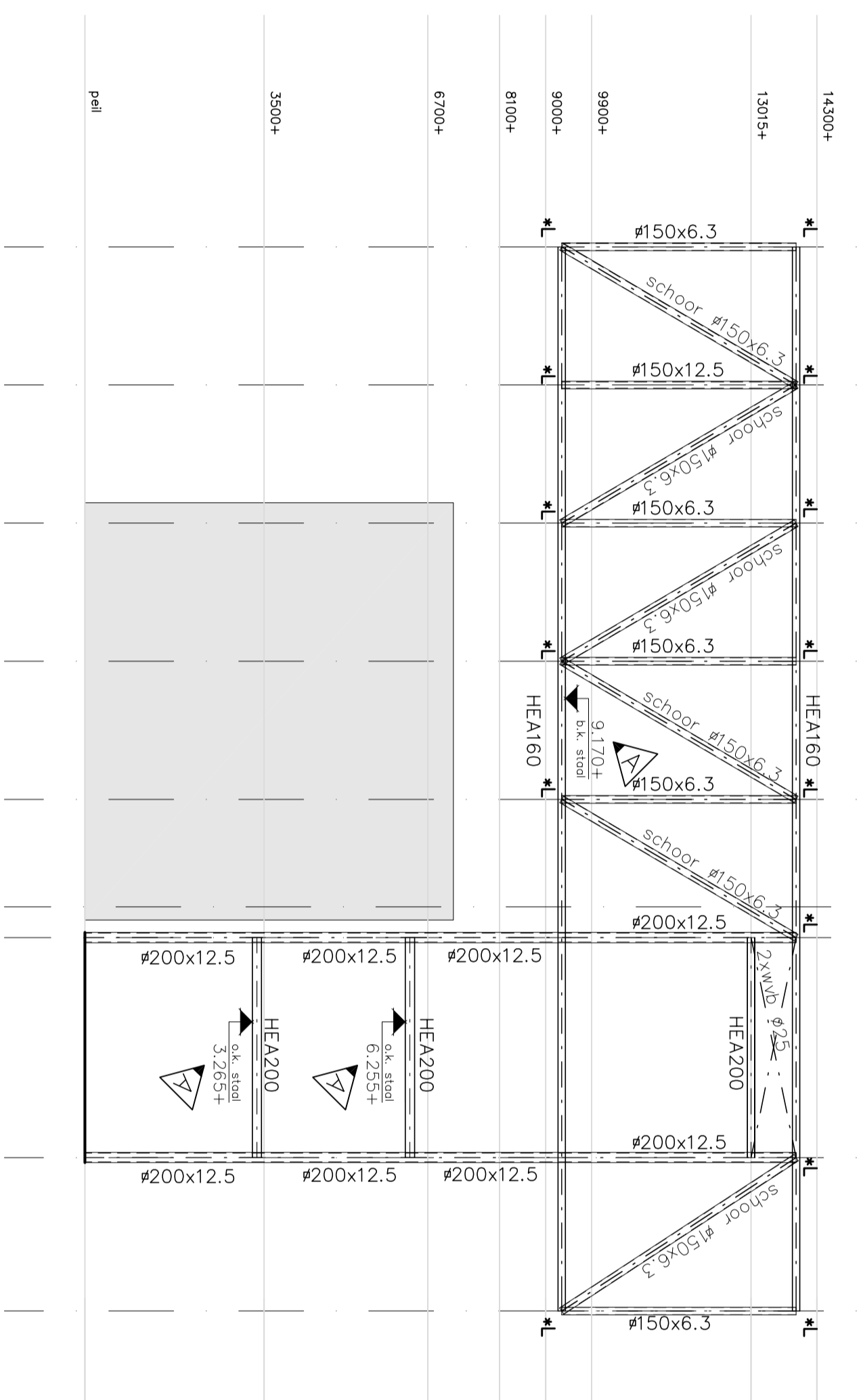
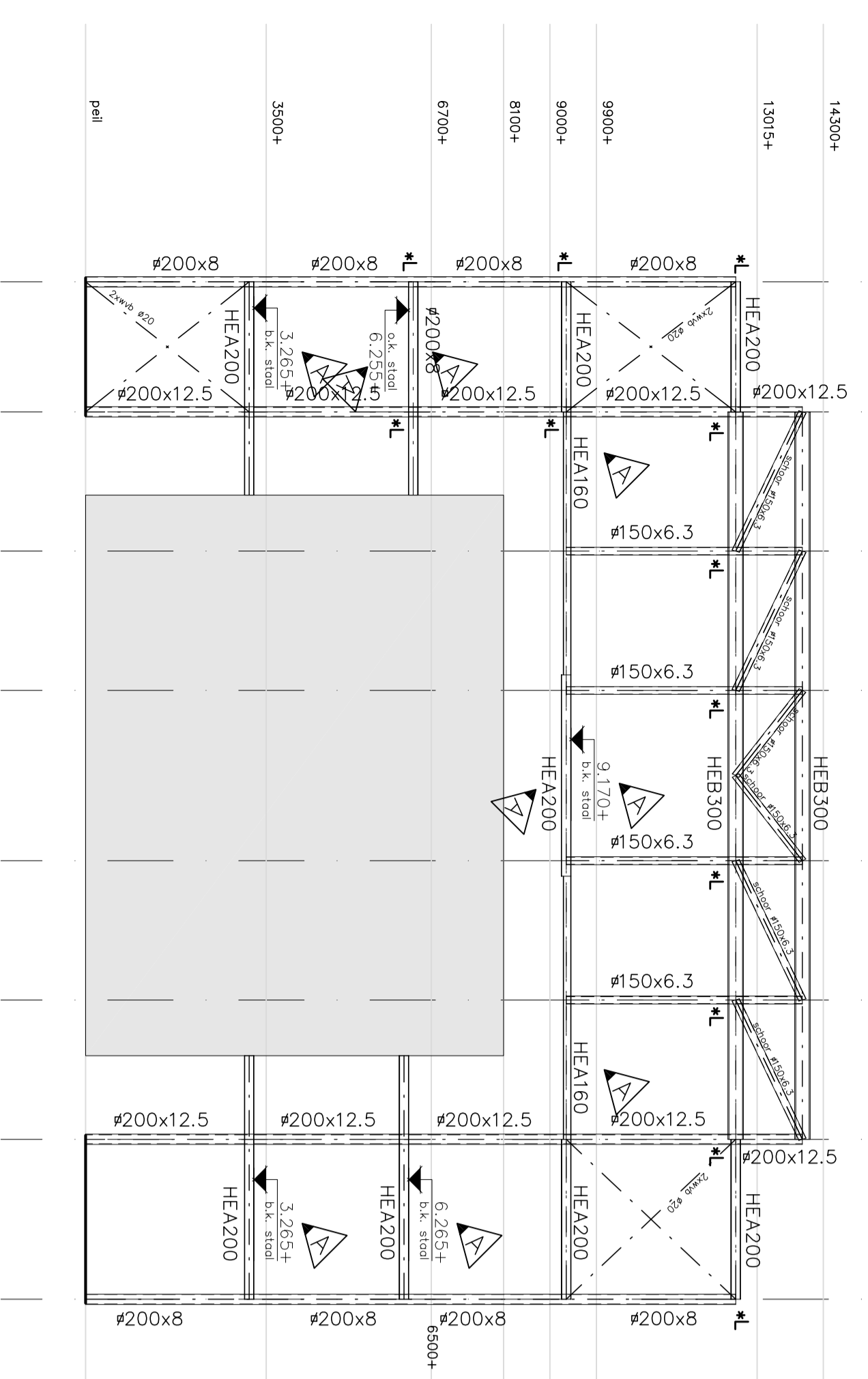
Gevelaanzicht op as 3



Gevelaanzicht op as 10

*L = gelaste verbinding
 IFBA = IPE400/400x20/200x100
 SFB = HEK280/500x20
 wvb = vertical windverband
 = sponninging staalplaatbetonvloer

Stoekwalfteit
 Bluzen (SFB & IFBA) = S355
 Kolven = S275
 Overig = S235
 Boukwalteit = 8,8



| | | | | | |
|---|----------|--|----|--|--|
| 0 | | | | | |
| C | | | | | |
| B | | | | | |
| A | 04-04-10 | Doprinkingen, reactie technische vraag d.d. 03-06-10, verwerkt | HW | | |
| 0 | 22-01-10 | Tot Contour | HW | | |
| | | Ontworpen | HW | | |
| | | Ontworpen | HW | | |

Project: Hoopbouw Roosendaal
 Gevelaanzichten & Doorsneden