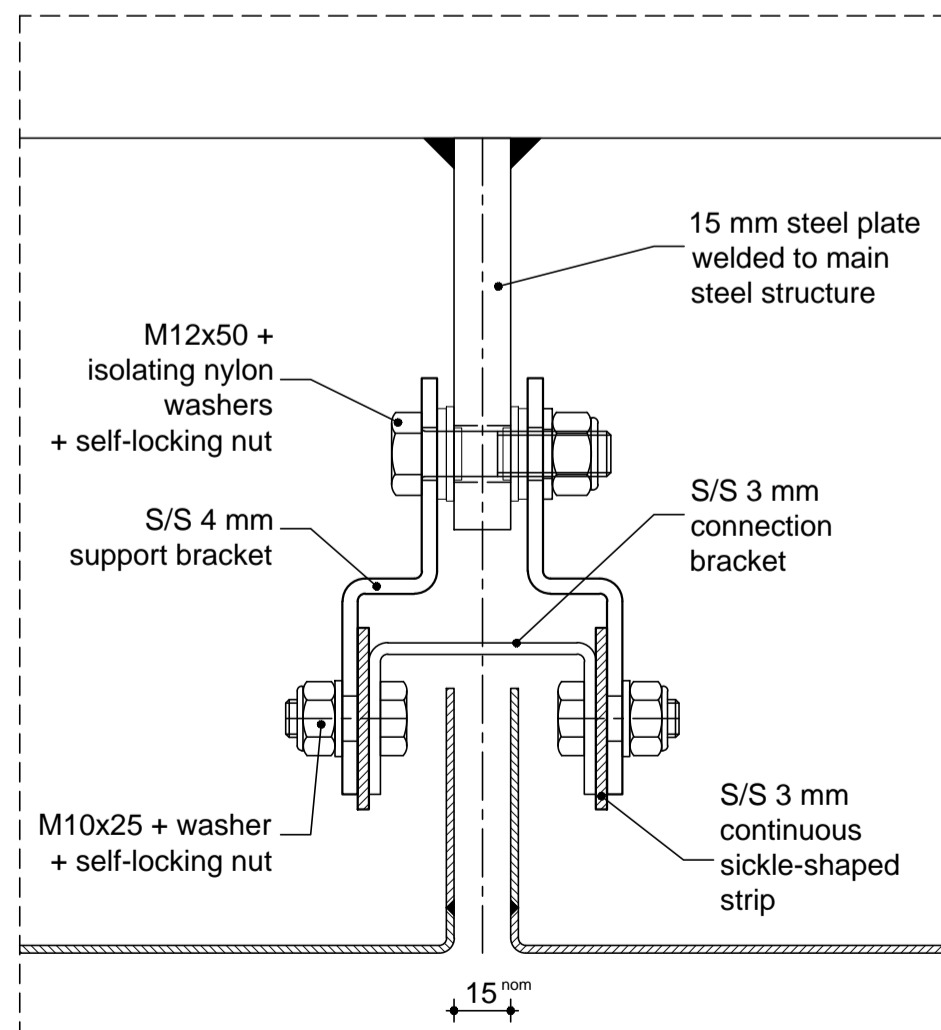


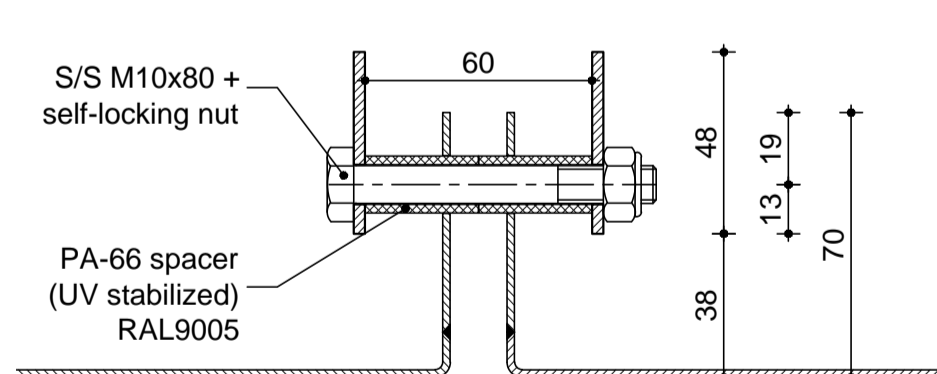
Section A-A

scale 1:10



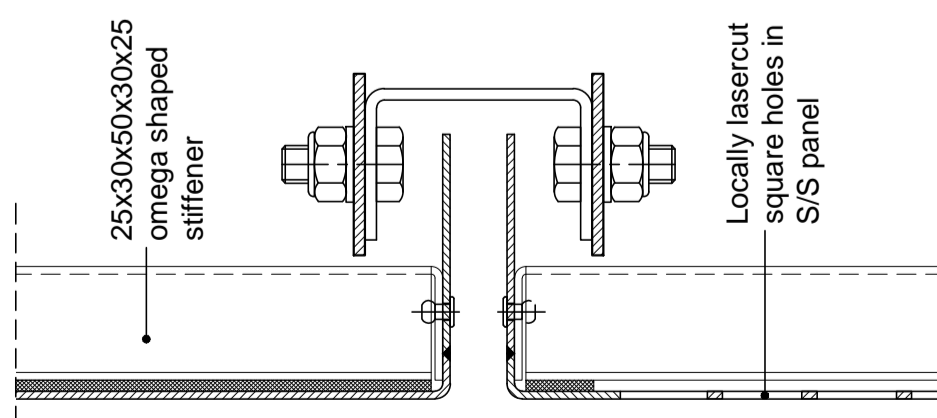
1 Connection substructure to steelwork

scale 1:2



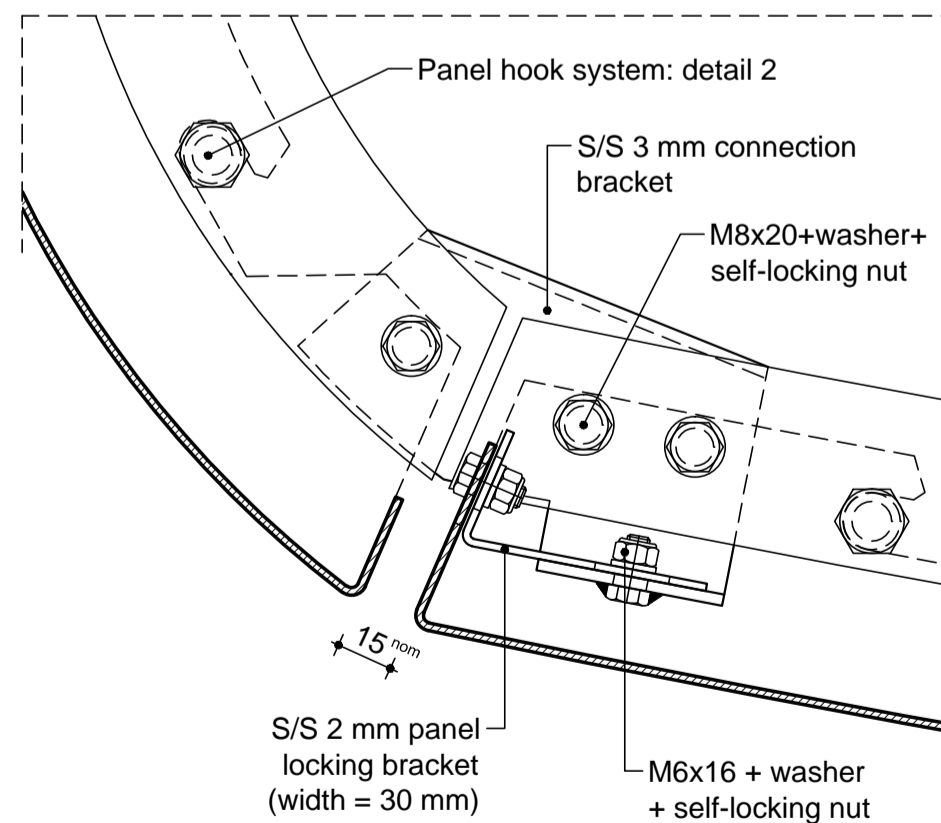
2 Panel hook system

scale 1:2



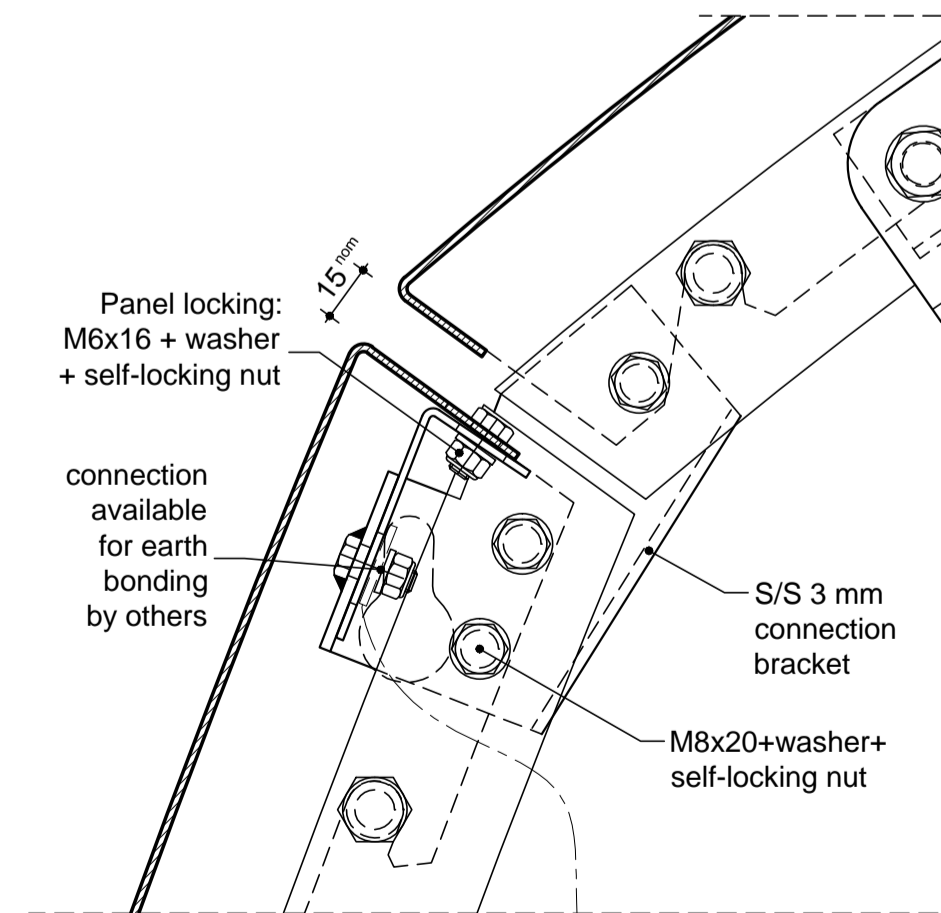
3 Substructure / mesh behind cut-out

scale 1:2



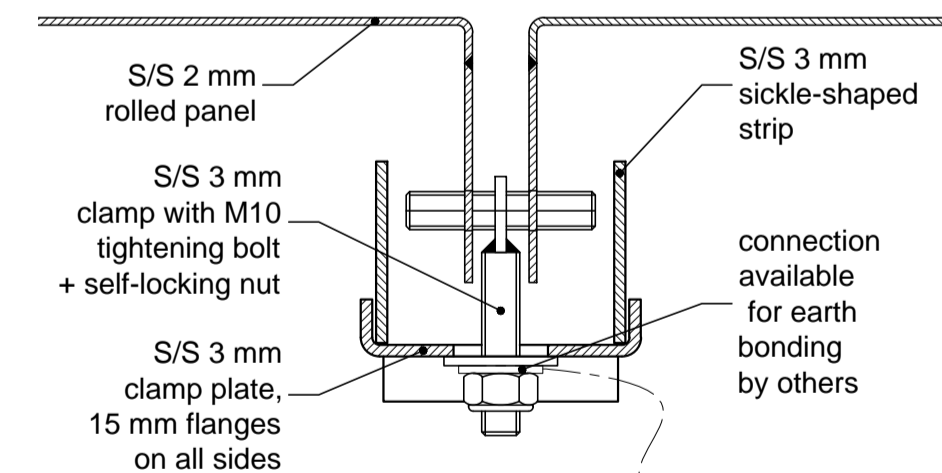
4 Lock bracket ceiling panel

scale 1:2



5 Lock bracket side panel

scale 1:2



6 Lock system roof panel

scale 1:2

G	21-04-2011	HR	As built
F	23-09-2010	HR	For construction
E	13-08-2010	HR	Form B update
D	18-05-2010	HR	Drawing updated with Briton structural steel drawing 1906-01 rev A
C	11-05-2010	HR	Clamp plate detail updated
B	10-05-2010	HR	Isolating washers near mild steel / CTC hook of top panel amended
rev.	date	name	modifications
drawn:	HR	checked:	CH
		date:	11-03-2010
		status:	As built
Project : Steam Pipe Bridge - Birmingham		size:	A1
		scale:	1:10 1:2
Subject : Cladding system principles			
sorba shaping architecture		Project number: 27193	
		Drawing number: 5013-300	

AS BUILT