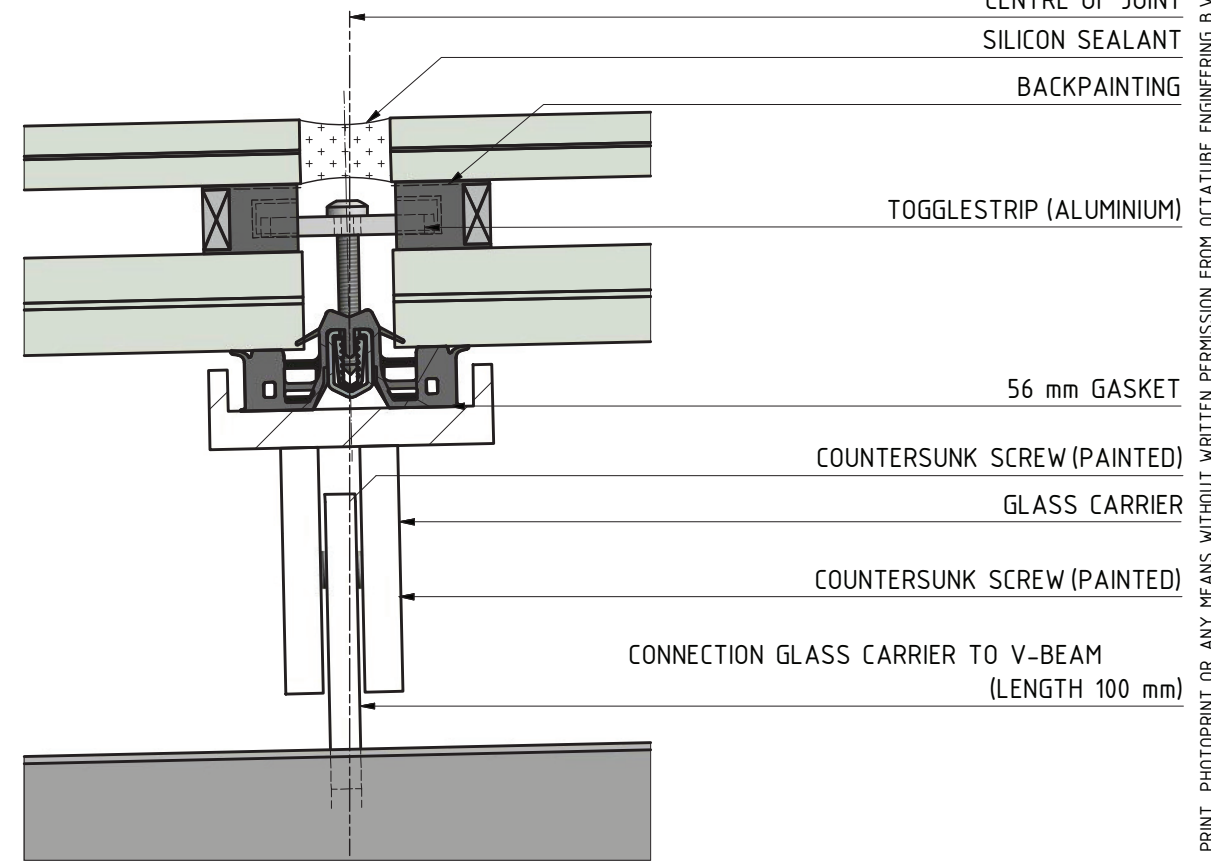
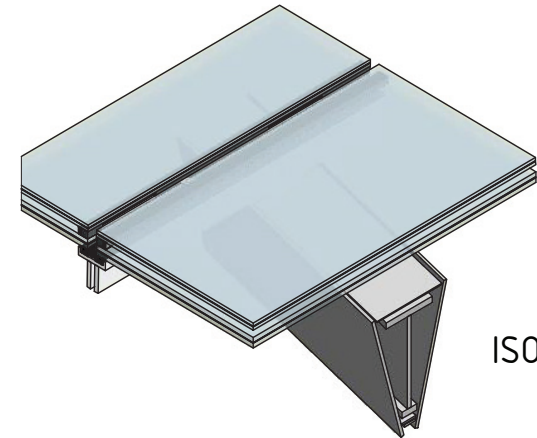


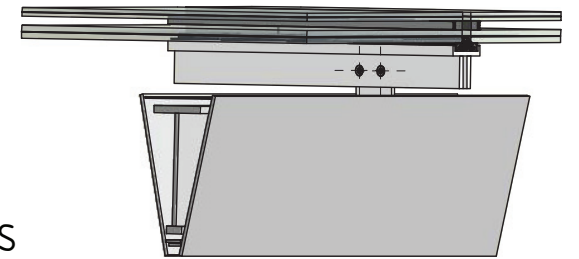
DETAIL 07



TYPICAL SECTION GLASS CARRIER ROOF



ISOMETRIC VIEWS



NOTE: GAPS COVER PLATES TO BE ASSESSED AT FIRST PANEL INSTALLATION BY ARCHITECT REQUIREMENT OF FOAM TAPE TO BE DECIDED BEFORE INSTALLATION OF OTHER PANELS. (REFERENCE RFI0068; MOCK-UP REVIEW)

STATUS	
AS BUILT	
DWG NO.	
D10007	
PROJECT NO.	
07338	
DRAWN BY	SIZE
MOD.	A3
	SCALE
	1:2

LINK BACKSIDE: AREA 1, (E1/E2), DETAIL 07		TITLE
V-BEAM AND GLASS CARRIER ROOF		
THE SAMMY OFER CENTRE		PROJECT
LONDON		
octatube ENGINEERING B.V.		ROTTERDAMSEWEG 200 2628 AS DELFT THE NETHERLANDS
		T + 31 (0)15-7890000 F + 31 (0)15-2622300 E INFO@OCTATUBE.NL I WWW.OCTATUBE.NL

DATE	APR
AS BUILT	

NO PART OF THIS DRAWING MAY BE REPRODUCED IN ANY FORM BY PRINT, PHOTOPRINT OR ANY MEANS WITHOUT WRITTEN PERMISSION FROM OCTATUBE ENGINEERING B.V.