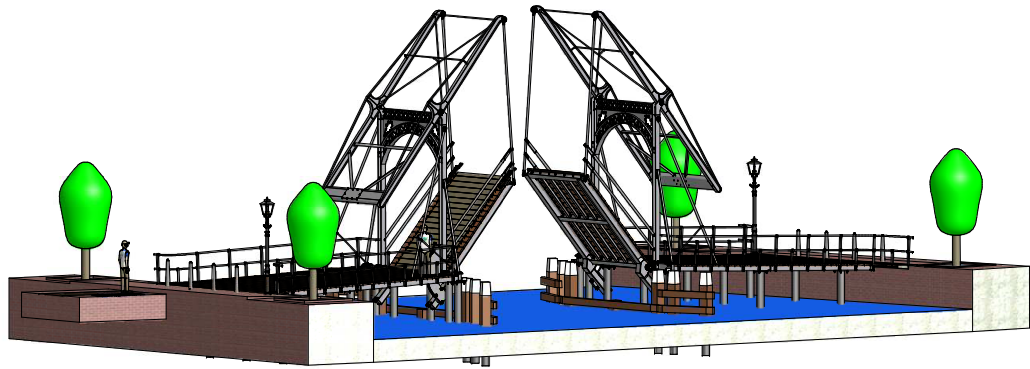
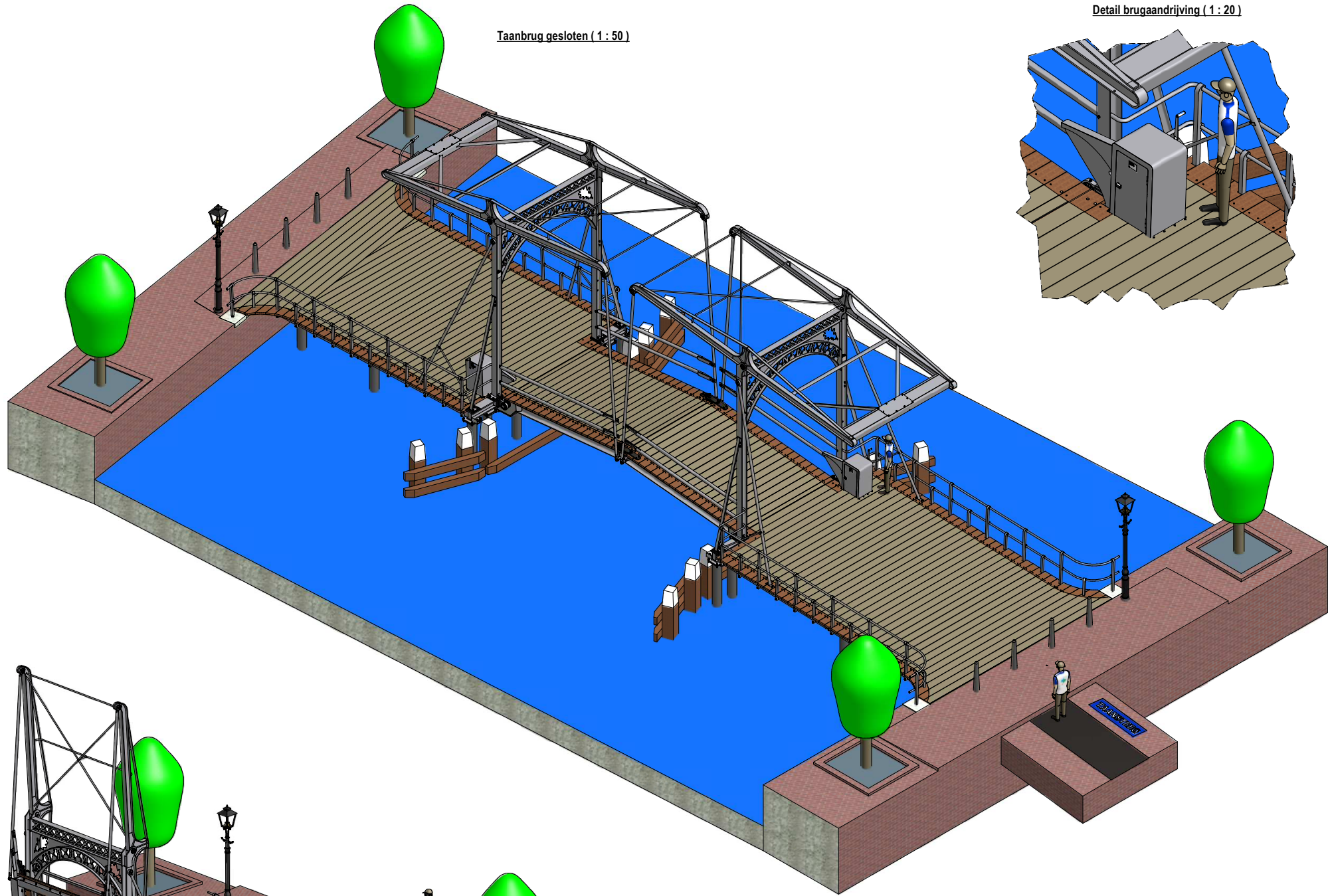


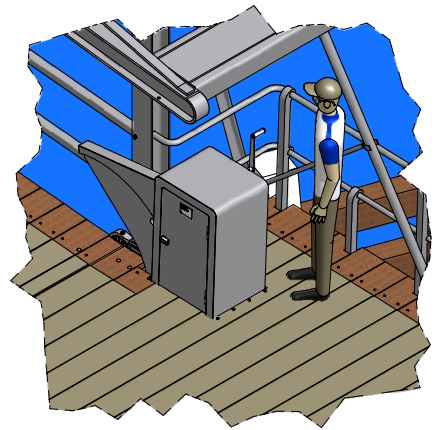
Taanbrug halverwege geopend (1 : 100)



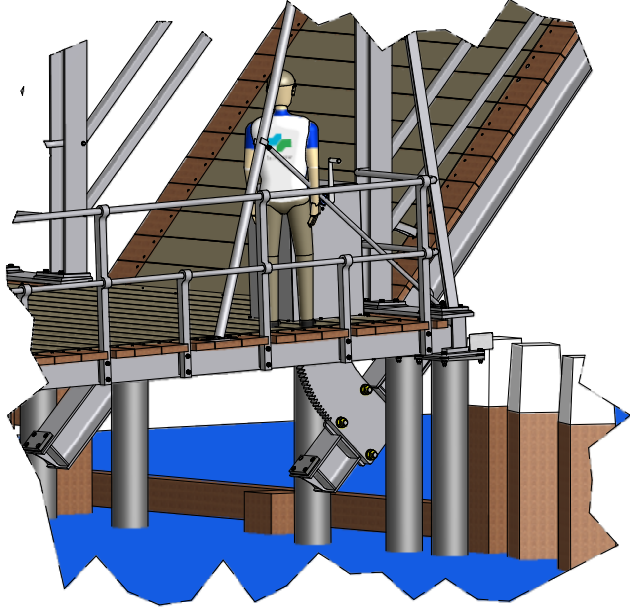
Taanbrug gesloten (1 : 50)



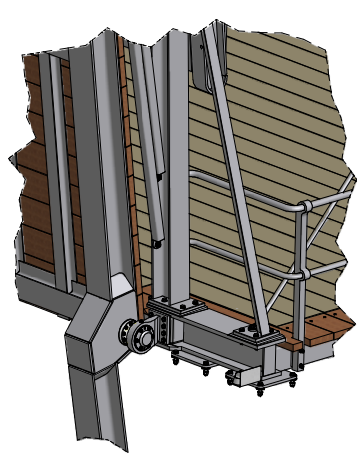
Detail brugaandrijving (1 : 20)



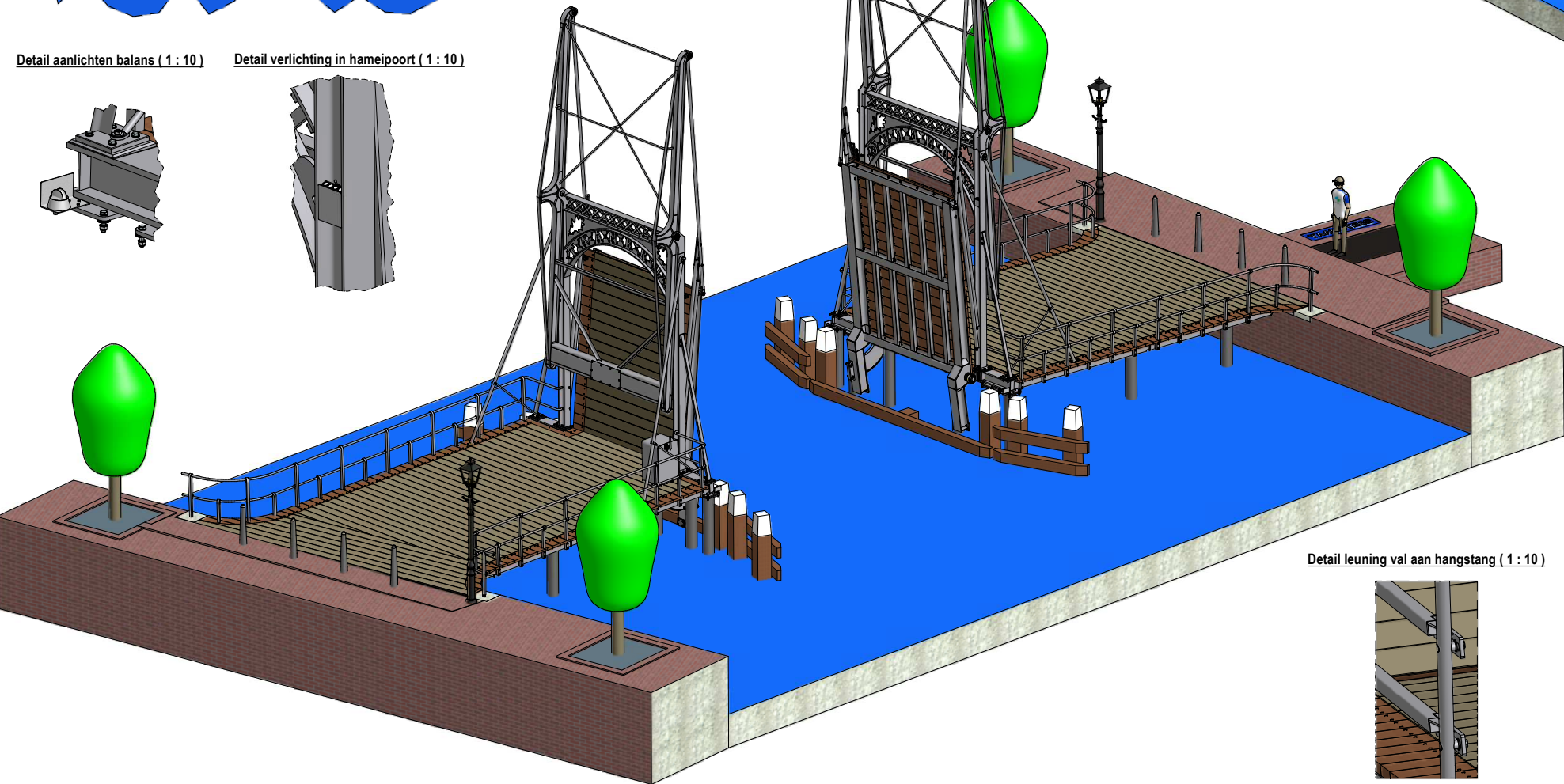
Detail aandrijving (1 : 20)



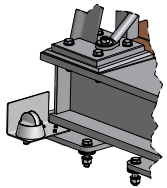
Detail hoofd draaipunt (1 : 20)



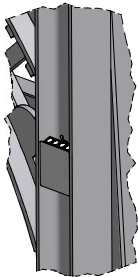
Taanbrug geopend (1 : 50)



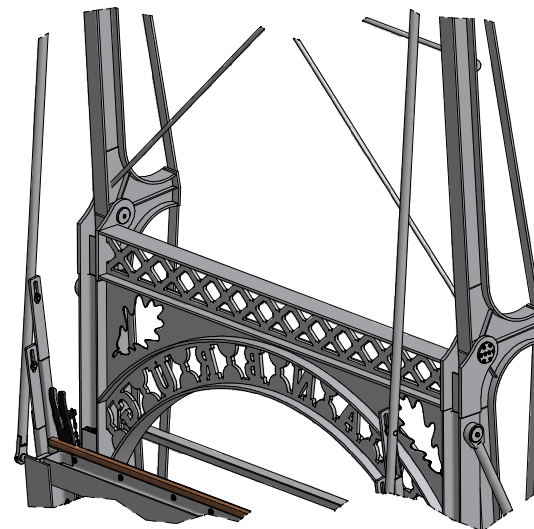
Detail aanlichten balans (1 : 10)



Detail verlichting in hamepoort (1 : 10)



Detail hamepoort + balans met hangstang (1 : 20)



Detail leuning val aan hangstang (1 : 10)



Opmerkingen:

- Nieuw te realiseren 'Taanbrug' te Schiedam;
- betreft alle delen binnen de 'Systeengrens Taanbrug' (dus excl. lantaarnpaal en paaltjes)
- Kademuur Noord, gem. 1020 mmNAP
- Kademuur Zuid, gem. 1070 mmNAP
- Voor meer details, zie onderliggende tekeningen (stuklijst)
- Alle maten in millimeters
- Maatvoering kademuuren conform inmeting 10-11-2016; maten in mm in RD-staal t.o.v. GPS-RTK (tachymetrisch verdit)

Sheet 1 / 2
zie sheet 2 / 2 voor details en maatvoeringen

Releasedate	Released	Design phase	Should Build	Drawn:	R.S.	17-10-2016
Scale	1:75	Material	A0	Approved:	J.A.R.	13-7-2017
Remove sharp edges	Remove sharp edges	Material surfaces	Ra 6.3 µm	Released:	W.v.d.M.	12-7-2017
		Machined surfaces	Ra 3.2 µm	Unless otherwise specified the following apply		
		Polished surfaces	Ra 0.8 µm	Quality system: Jansen Venneboer		
Client:	Gemeente Schiedam			Requirements: see quality class		
Project:	Taanbrug			Machining: see table		
Supervision:				Welding: see table		
				Tolerances: see table		
				Visual quality: see table		
				Thermal coating: see table		
				All dimensions in millimeters (mm)		
				Jansen Venneboer Industrieweg 4 Postbus 12 8130 AA Wippe Nederland Phone: +31 (0)70 42 25 25 Fax: +31 (0)70 42 58 18 Internet: www.jansen-venneboer.com		
				Drawing number: 25135-0100-00 Sheet 1 of 2 D		