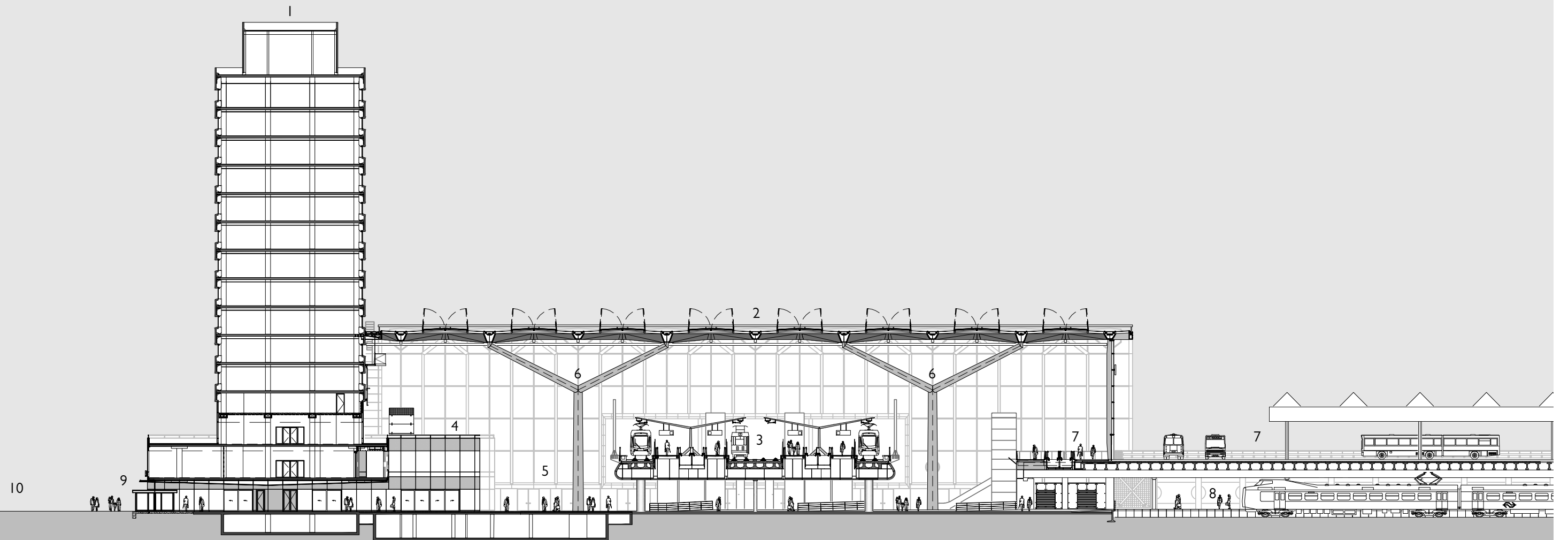


- 1 kantoorgebouw Stichtage
- 2 dak OVT
- 3 tramplatform
- 4 commercie Stichtage
- 5 stationshal
- 6 stalen hoofdkolommen
- 7 busplatform
- 8 perron
- 9 entree Koningin Julianaplein
- 10 Koningin Julianaplein



0 5 10 25m

