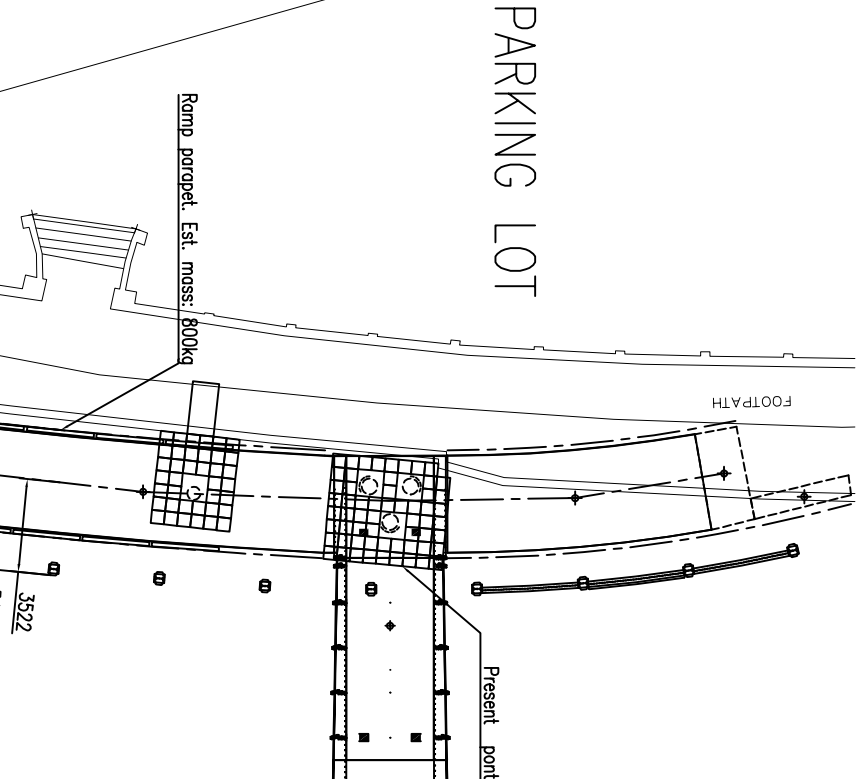
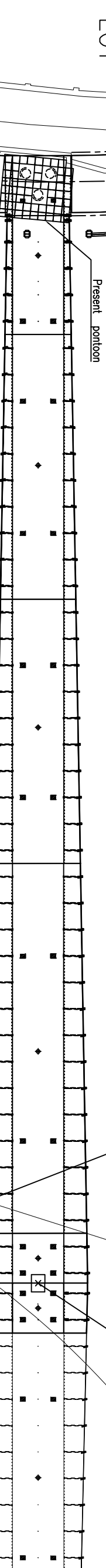


RIVER THAMES

SSE PARKING LOT

Stop block to prevent telehandler from driving off the bank



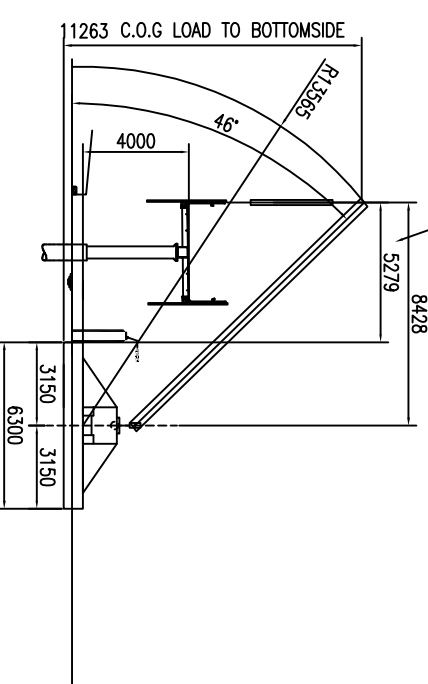
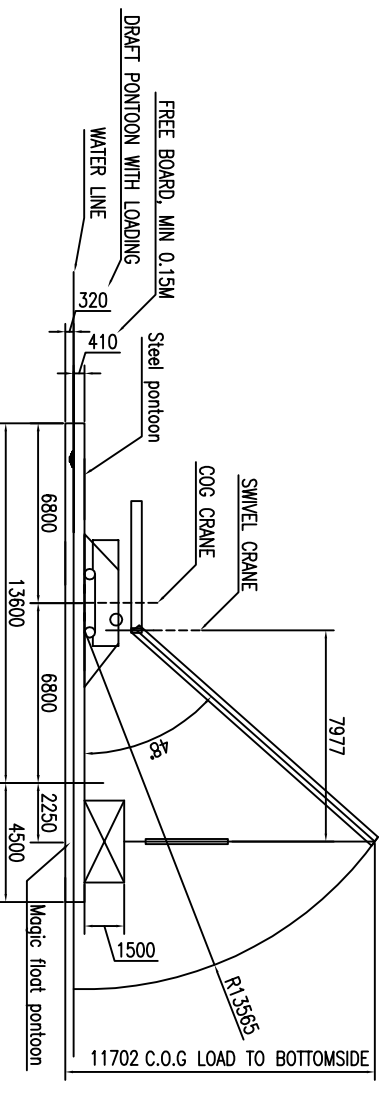
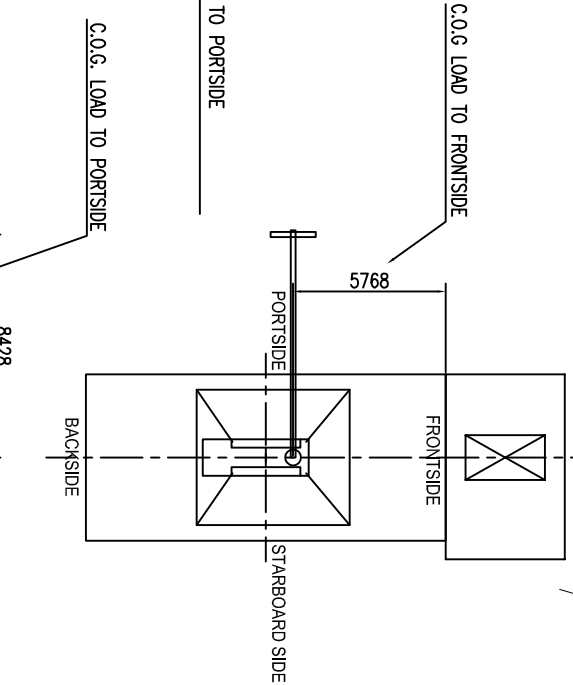
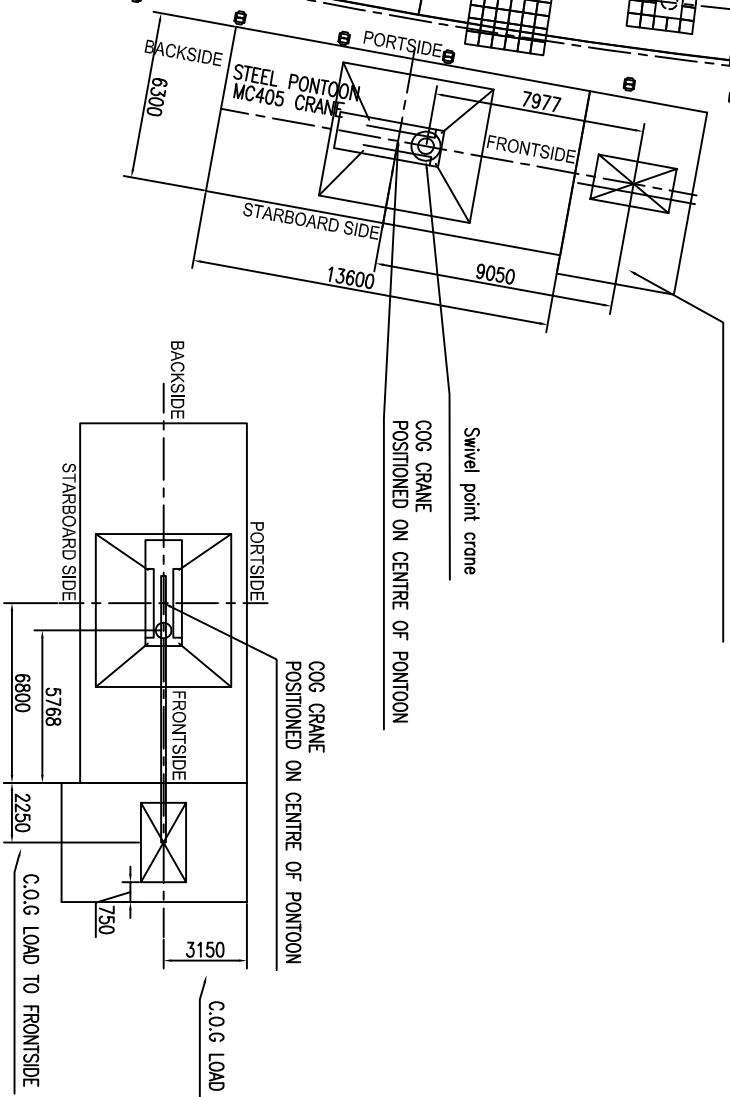
Magic float transport pontoon for parapets. Parapets loaded by telehandler.

Max loading on pontoon is 6804 KG
Max 800 x 5 parapets to be loaded onto pontoon

NORTH BANK

	6300			
	2100	2100	2100	
	SWIM END	MID END	SWIM END	
	SWIM END	MID END	SWIM END	
	4700	4200	4700	
13600				

LAYOUT ASSEMBLED STEEL PONTOON



PHASE 1: LIFTING LOAD FROM MAGIC FLOAT TRANSPORT PONTOON

PHASE 2: Boom up the mast to bring the load as close to the crane mast as possible. Load is within the pontoon. NO SLEWING

PHASE 3: SLEW LOAD INTO POSITION, BOOM OUT AND INSTALL THE TO THE RAMP SECTION HIGHEST POINT (STAIRS)

REV		DATE	DRAWN	CHECKED	DATE	DESCRIPTION
<p>HOLLANDIA INFRA</p> <p>Head Office: P.O. Box 52, 2002 AA Rotterdam, The Netherlands Phone: +31 (0) 10 - 595956</p> <p>Project: Raising Pedestrian/Cycle Bridge</p> <p>Client: Balouw Benly</p> <p>Scale: 1:100</p> <p>Date: 14/04/2020</p> <p>Project: Lijepan installation reed parapets</p>						
0	REV.		AO			33651 - 50-150