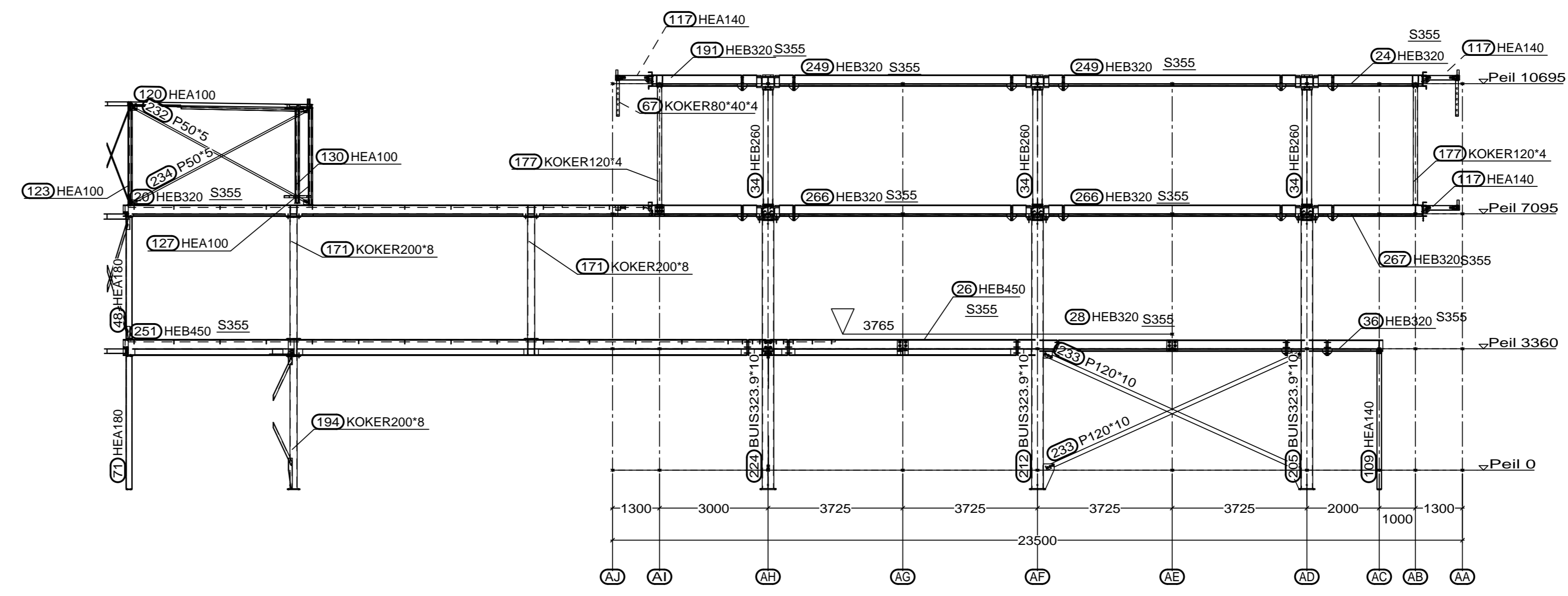
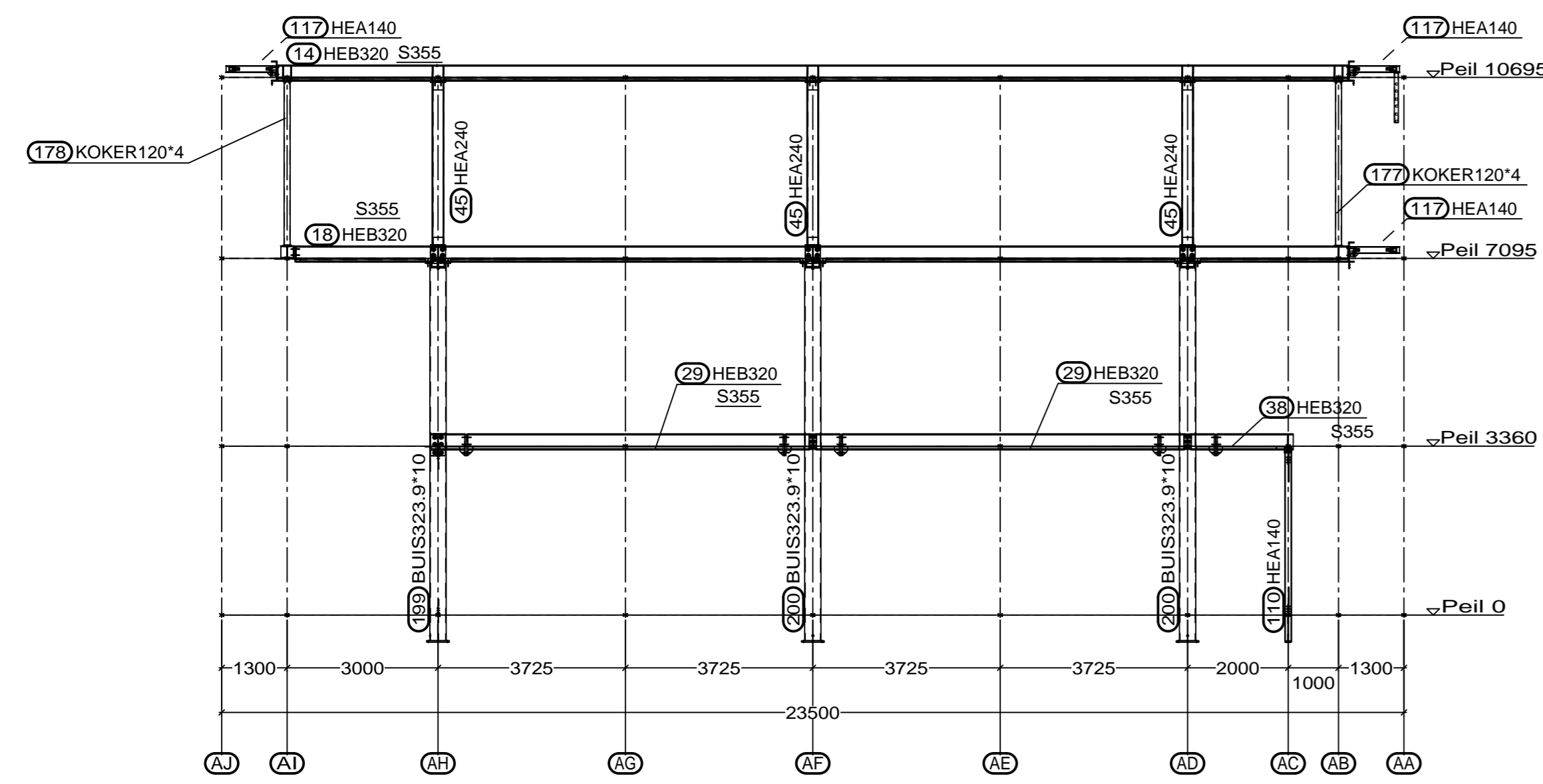


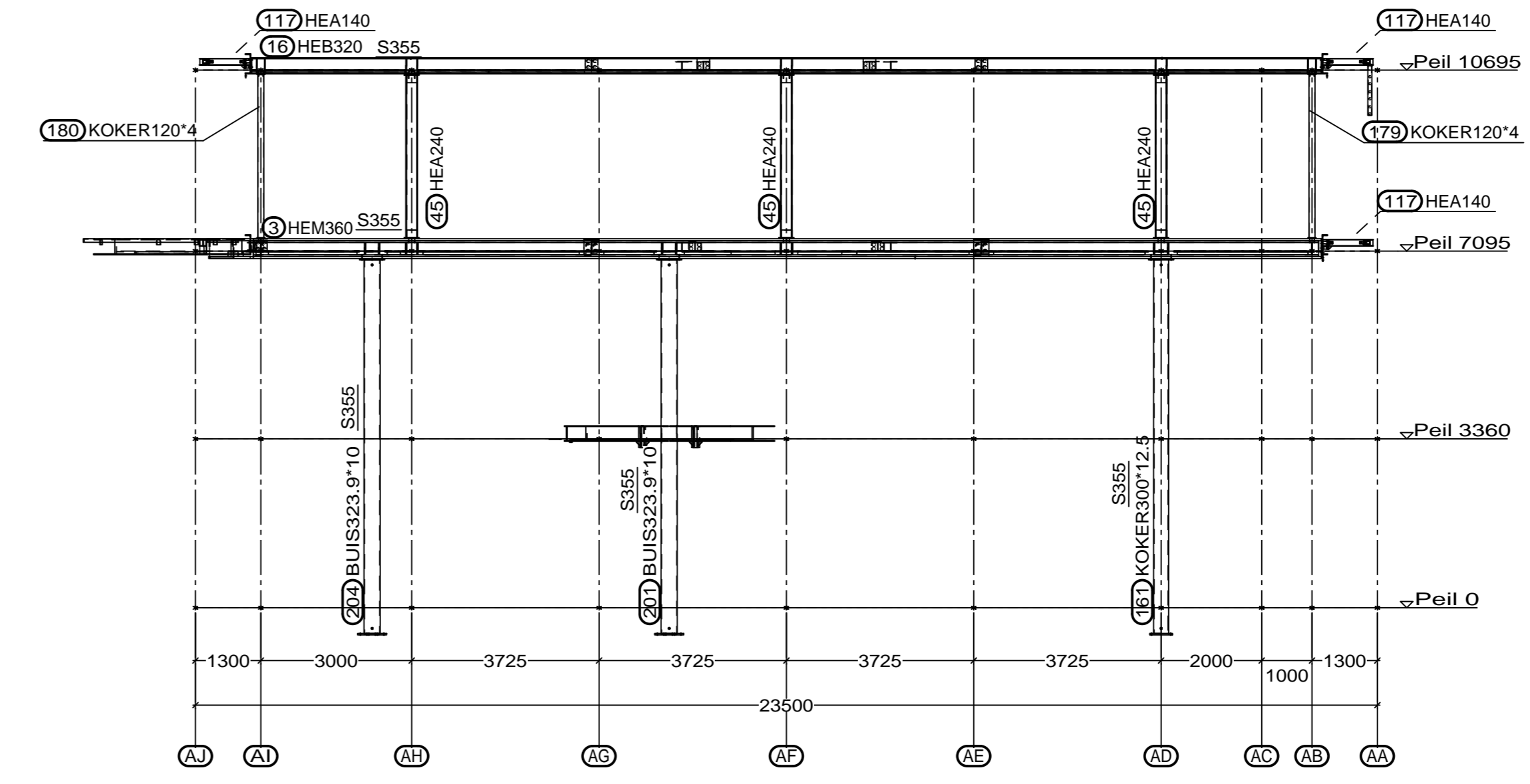
As A2



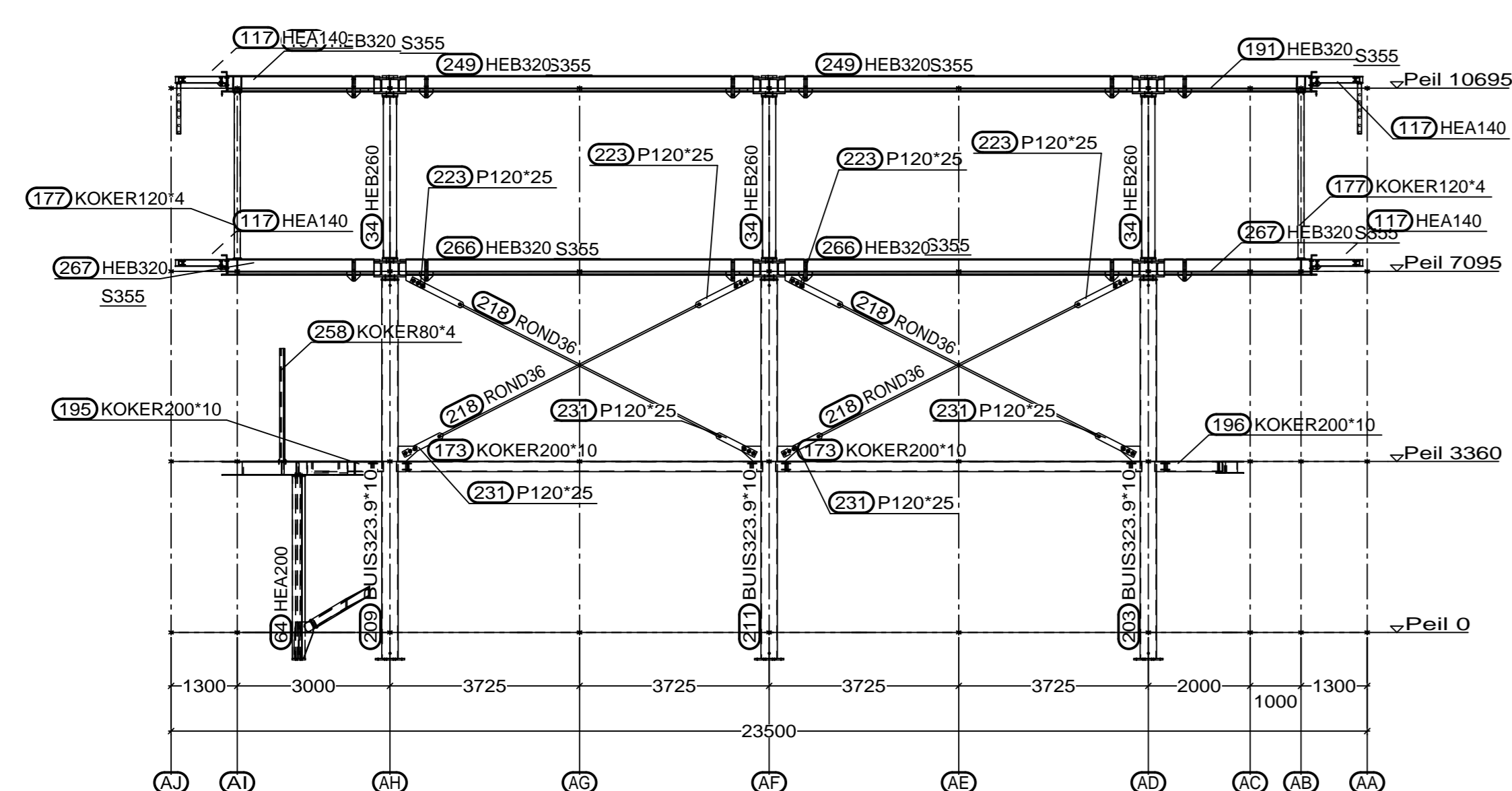
As tussen A4 / A5 WvB P120x10 3x M16



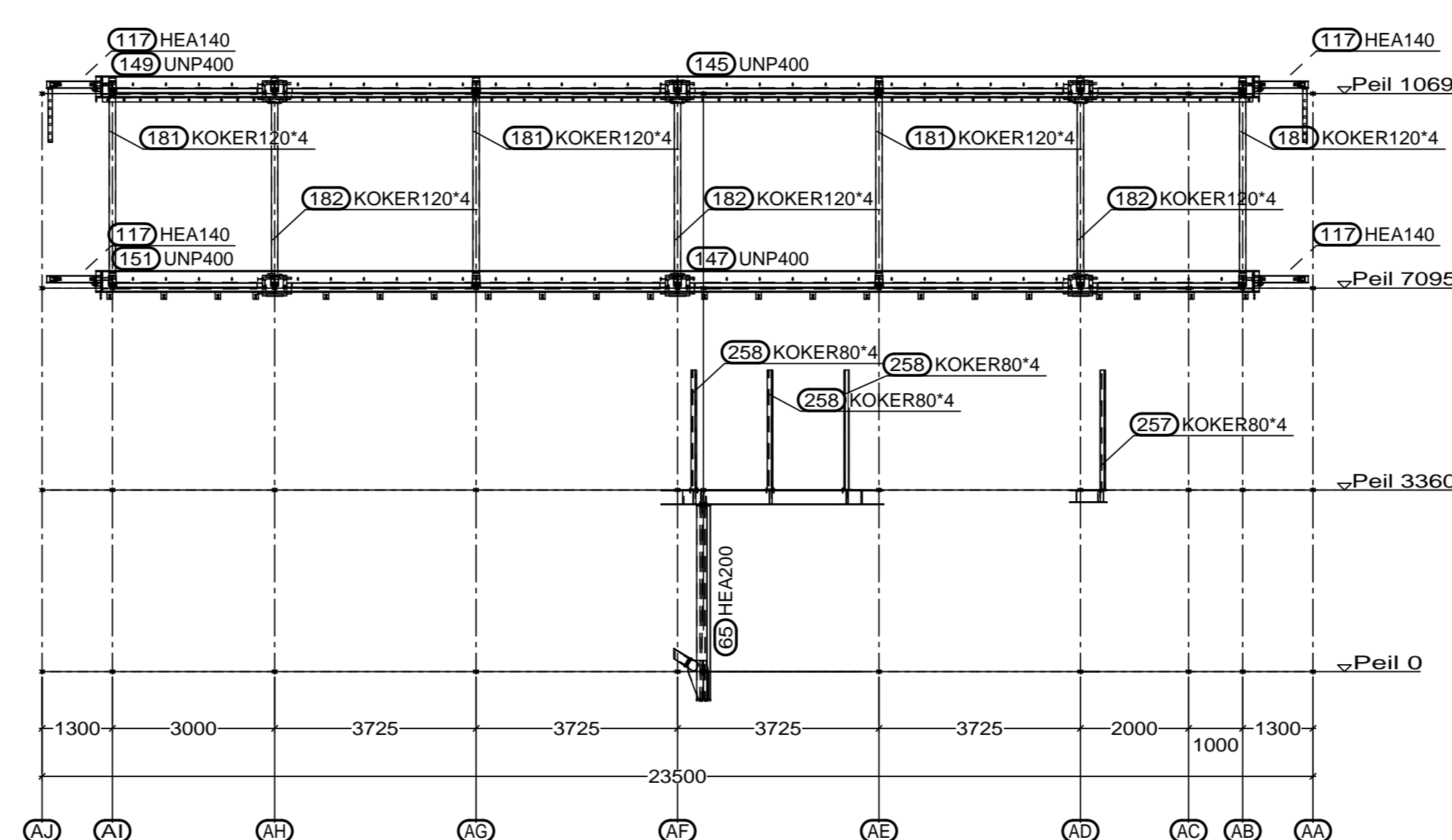
As A6



As A10



As A14 Rond36 = Willemsanker M36



As A15

BUIS en KOKER kolommen
wapening + betongevuld

As A2 As tussen A4 / A5

As A6 As A10

As A14 As A15

Cijferassen

Kantoor

Schaal 1:100 Details 1:10 DEFINITIEF
Staal kwaliteit : Profielstaal S235JR5 tenzij anders vermeld.
Staal kwaliteit : Kokers en buizen: S235/S275 tenzij anders vermeld.
Bout kwaliteit : 8.8 gerolde draad.
Lussen : A=0. Kokerniete plaatdikte/ Amin=4mm tenzij anders vermeld.
Conservering : Stralen SA 2.5 - Natlak ZFC 80mu tenzij anders vermeld.

Project : Nwb. Veth propulsion (exc.2)

Opdr. gever: Staton bouw bv

	gemaakt	19.05.2015
	aanvraag	05.05.2015
	aanpak	13.04.2015
	geaanvaard	G. Alberti
Website: www.staalbouw-cluistra.nl		ord.nr. 1508_k AANZICHT_7