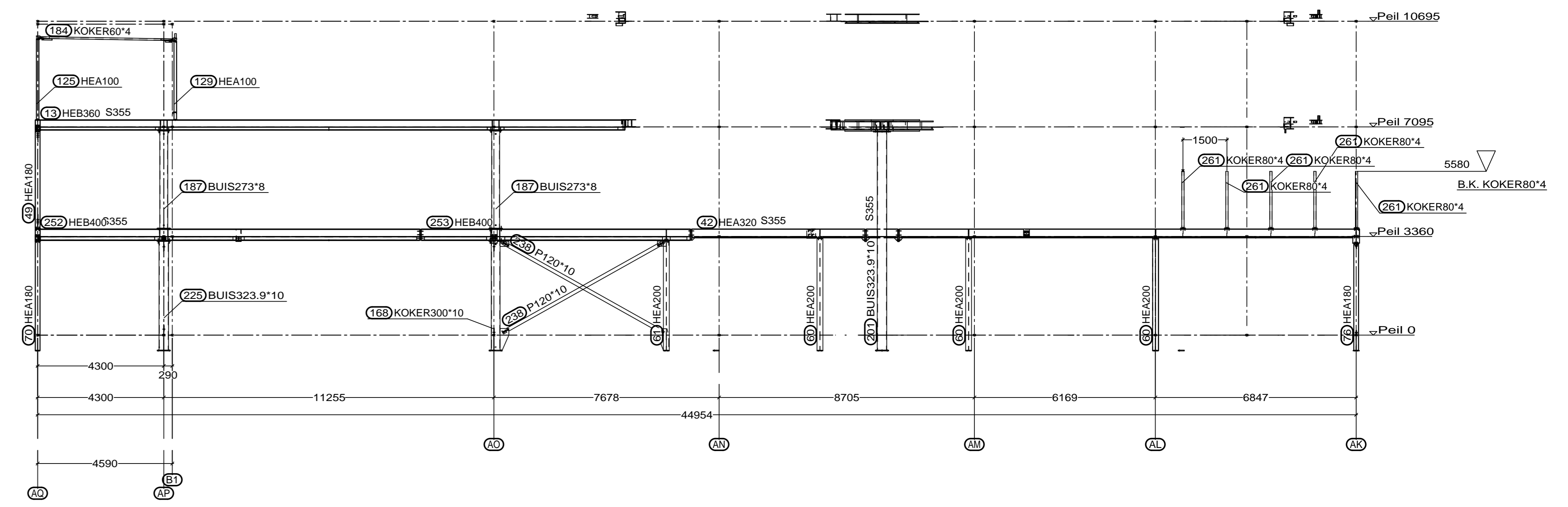
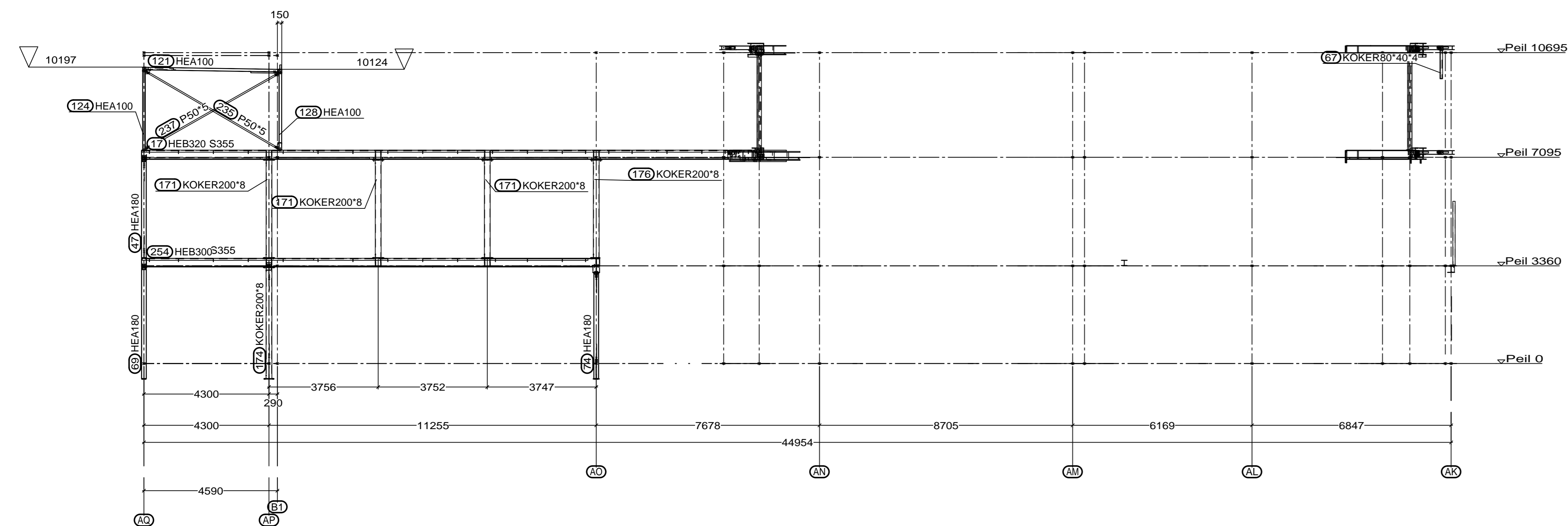


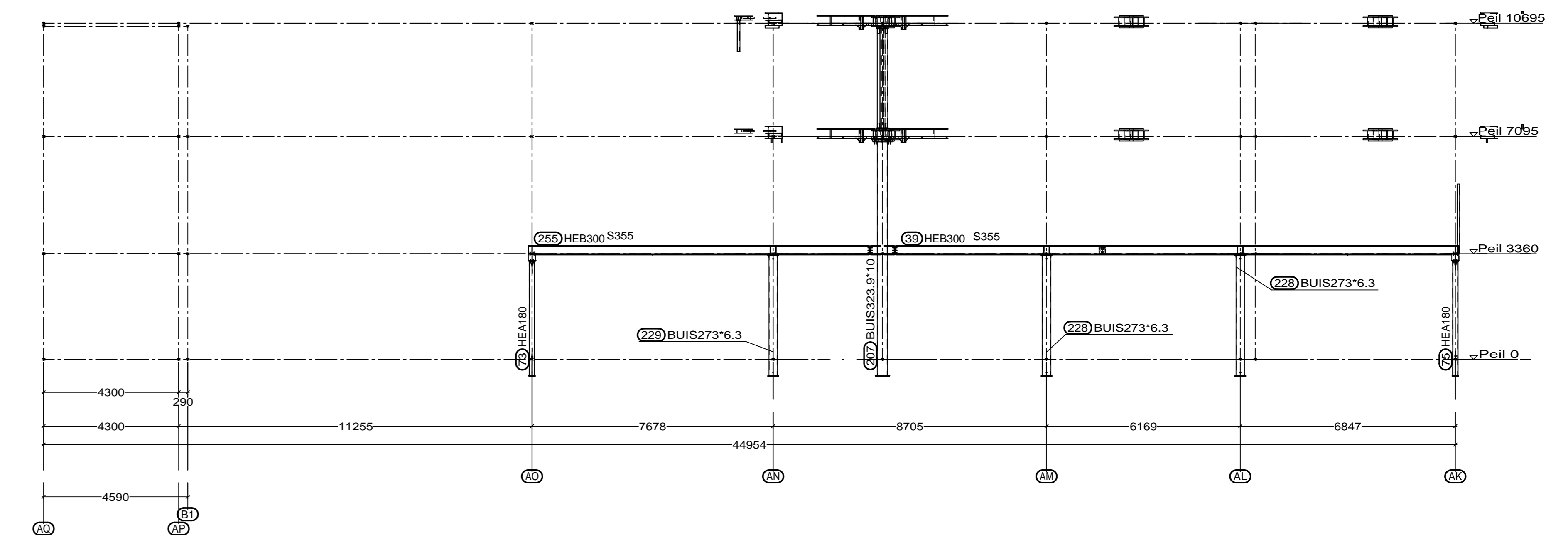
As A20



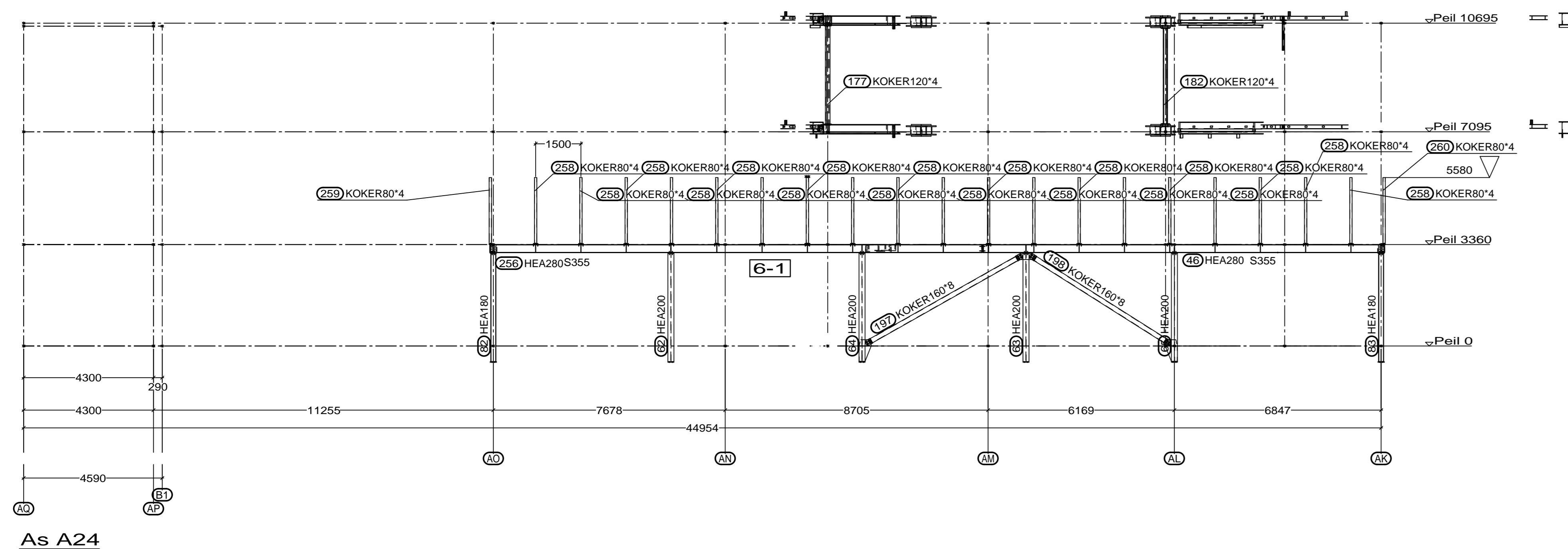
As A21 WvB P1120x10 3x M16



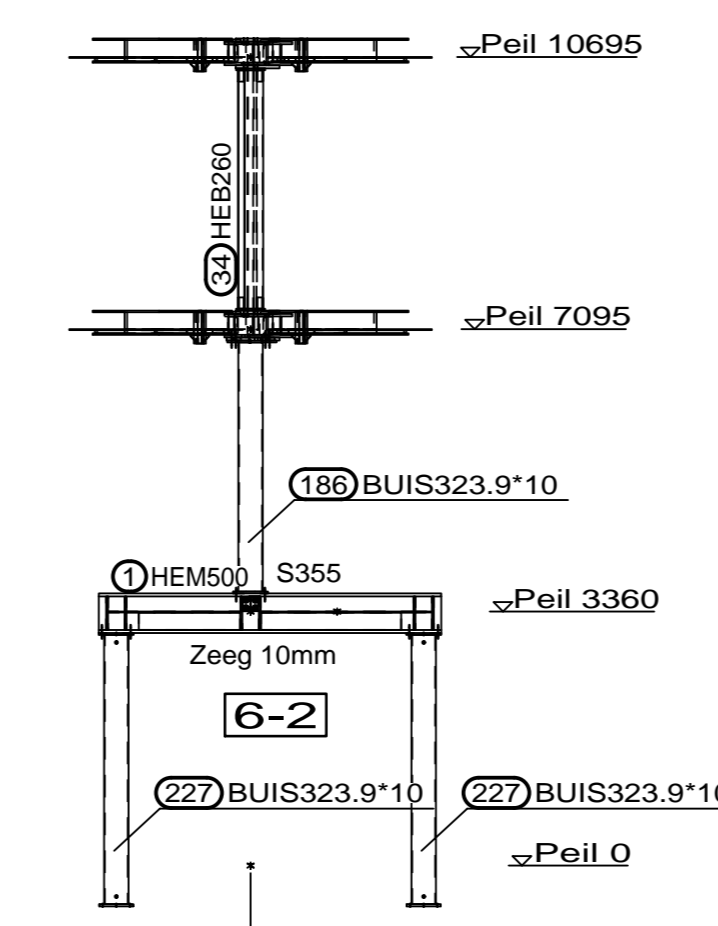
As A22 WvB P150x5 2x M12



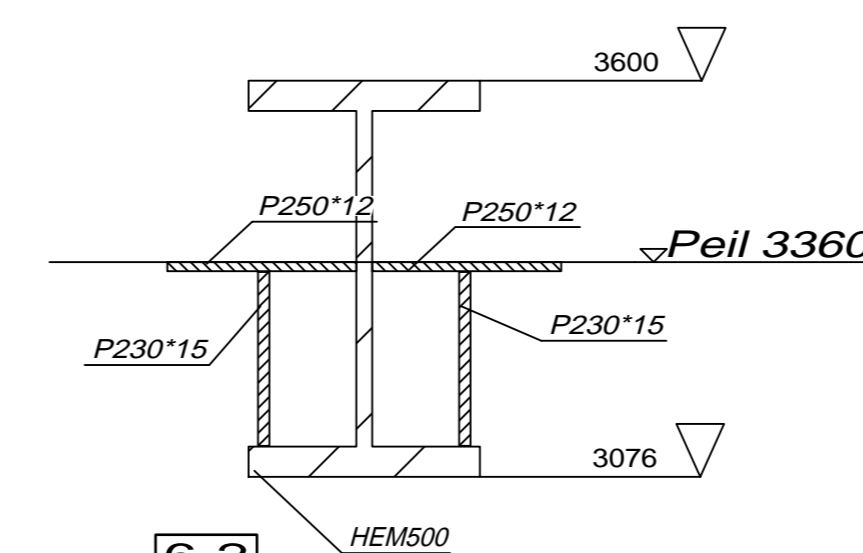
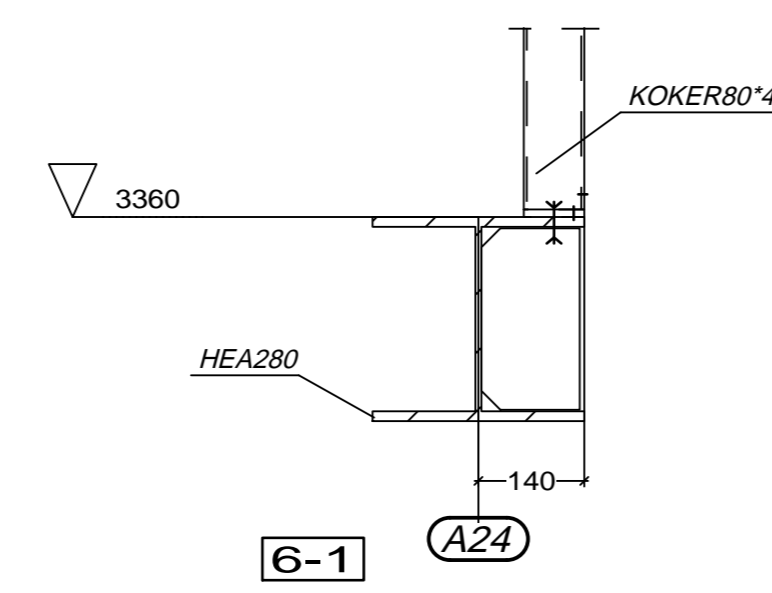
As A23



As A24



As tussen 22 / 23



BUIS en KOKER kolommen
wapening + betongevuld

As A20 As A21

As A22 As A23

As A24 As tussen 22 / 23

Cijferassen

Kantoor

Schaal 1:100 Details 1:10
DEFINITIEF
Staal kwaliteit : Profielstaal S235JR tenzij anders vermeld.
Staal kwaliteit : Kokers en buizen S235/S275 tenzij anders vermeld.
Bout kwaliteit : 8.8 gerolde draad.
Lussen : A-0. Kokers en buizen plaatdikte / Amin=4mm tenzij anders vermeld.
Conservering : Stralen SA 2.5 - Natlak ZFC 80mu tenzij anders vermeld.

Project : Nwb. Veth propulsion (exc.2)

Opdr. gever: Staton bouw bv

	gemaakt	19.05.2015
	gecorrigeerd	05.05.2015
	gecheckt	13.04.2015
	gevalideerd	G. Alberti
Website: www.staalbouw-cluistra.nl		ord.nr.
		15008_k
		AANZICHT_6