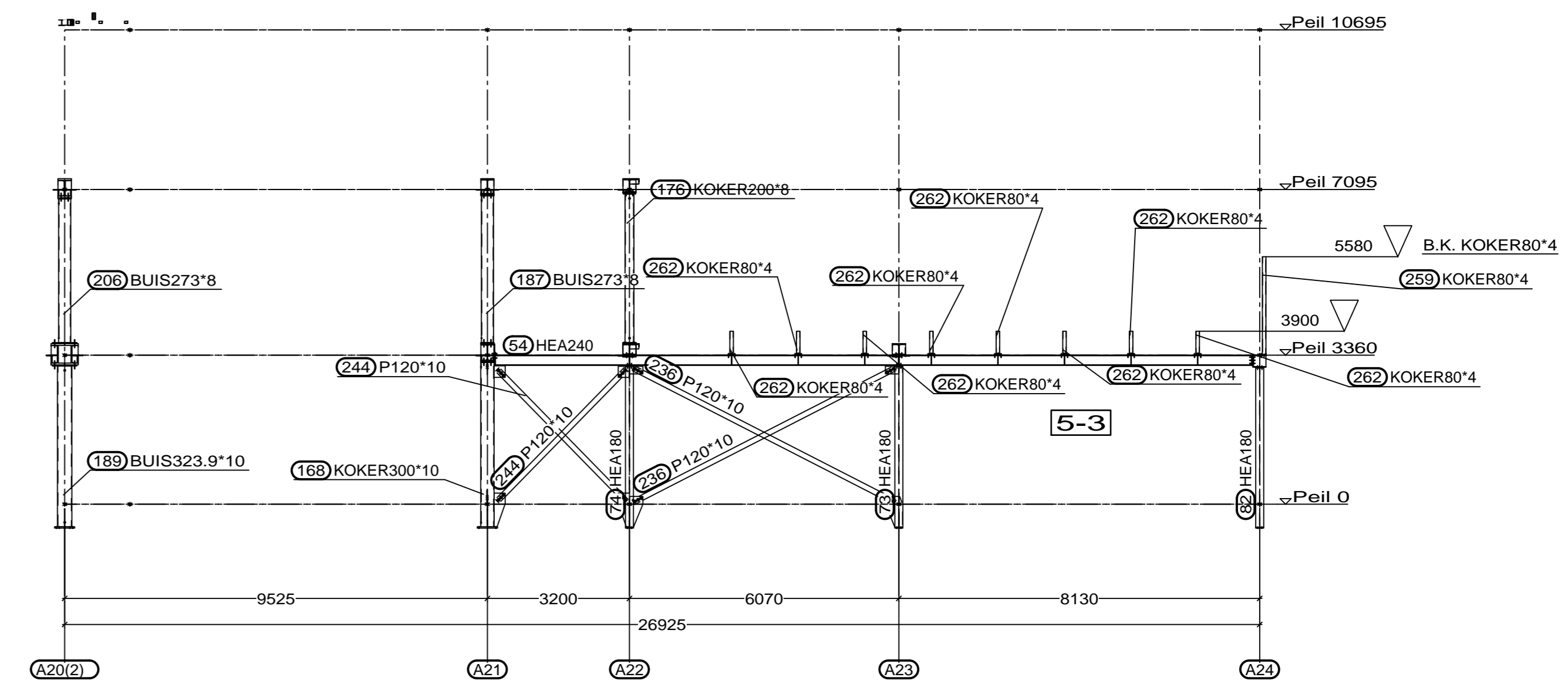
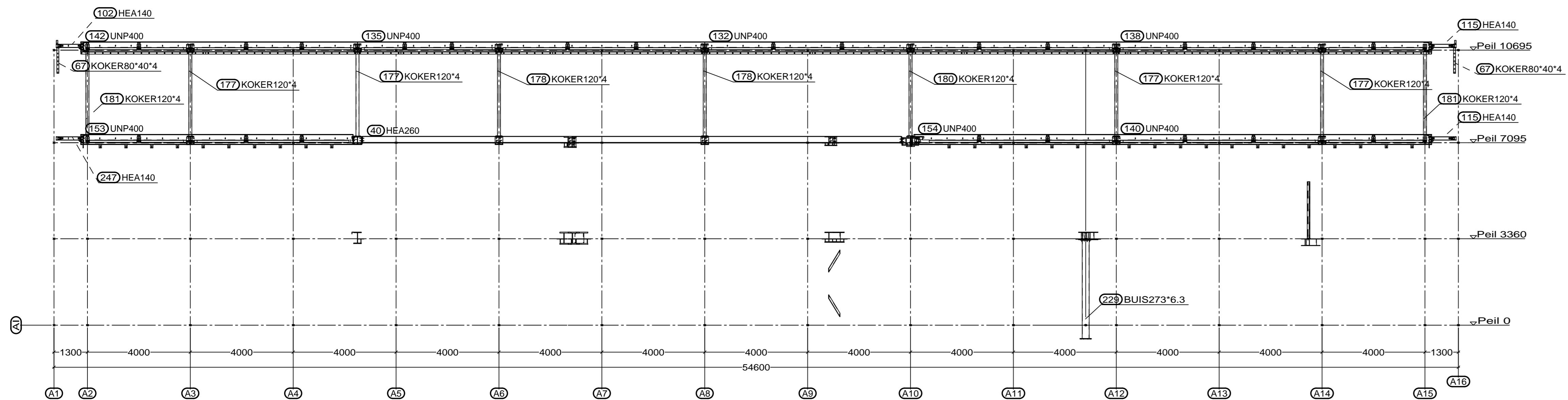


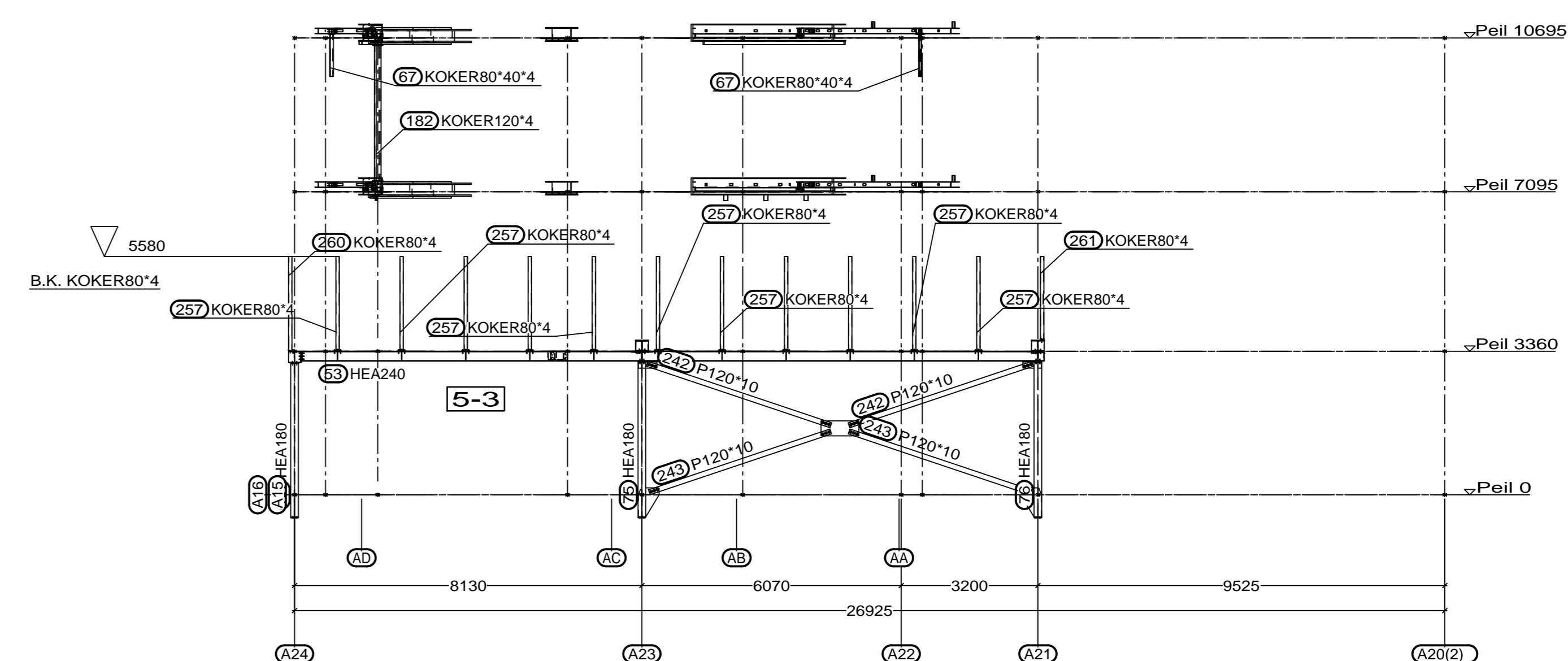
As A.H VwB P120x10 3x M16



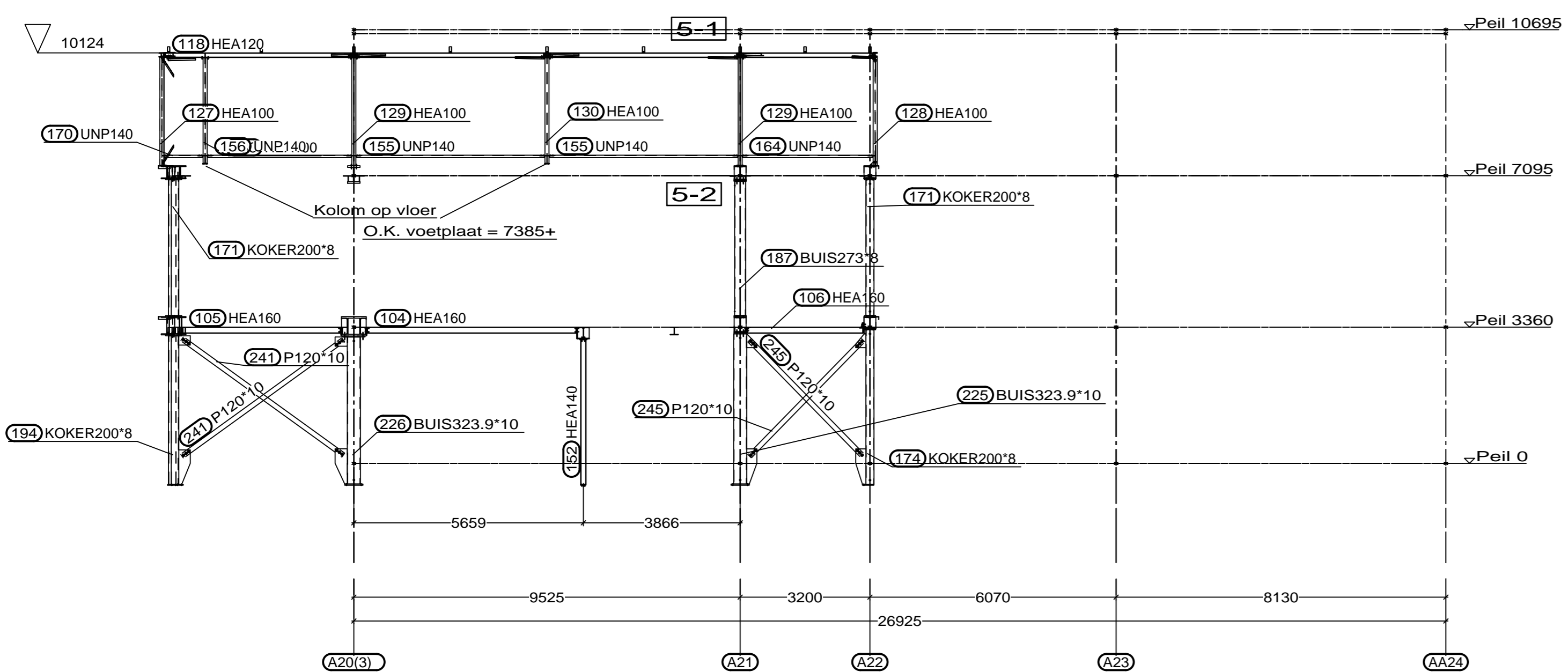
As A.O VwB P120x10 3x M16



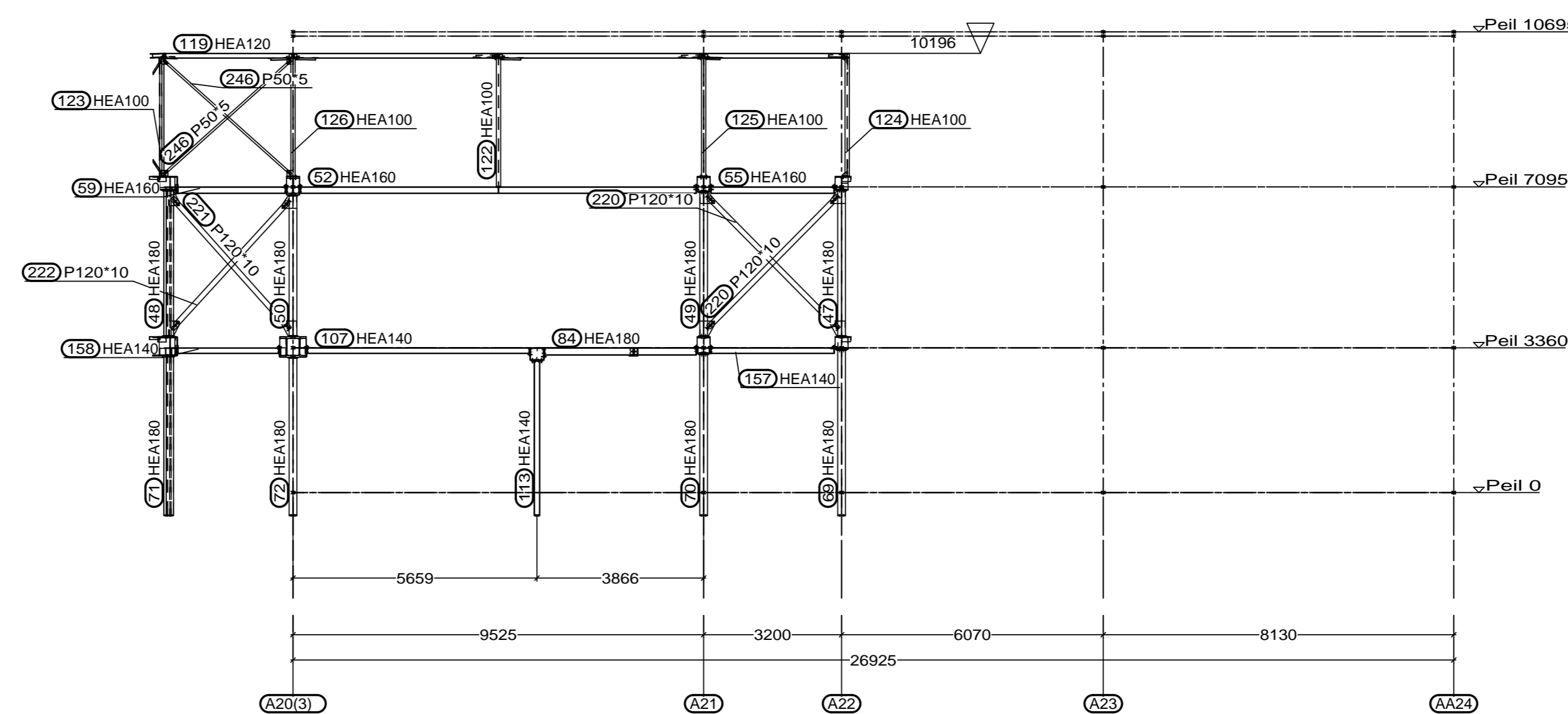
As A.I



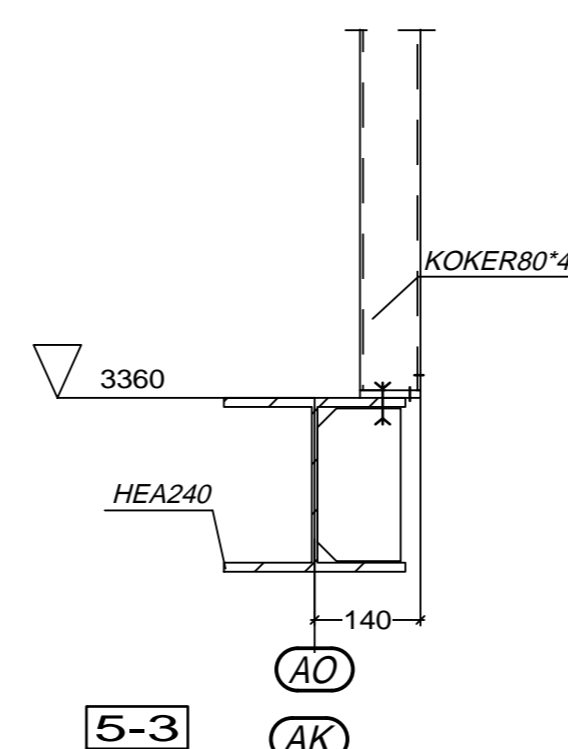
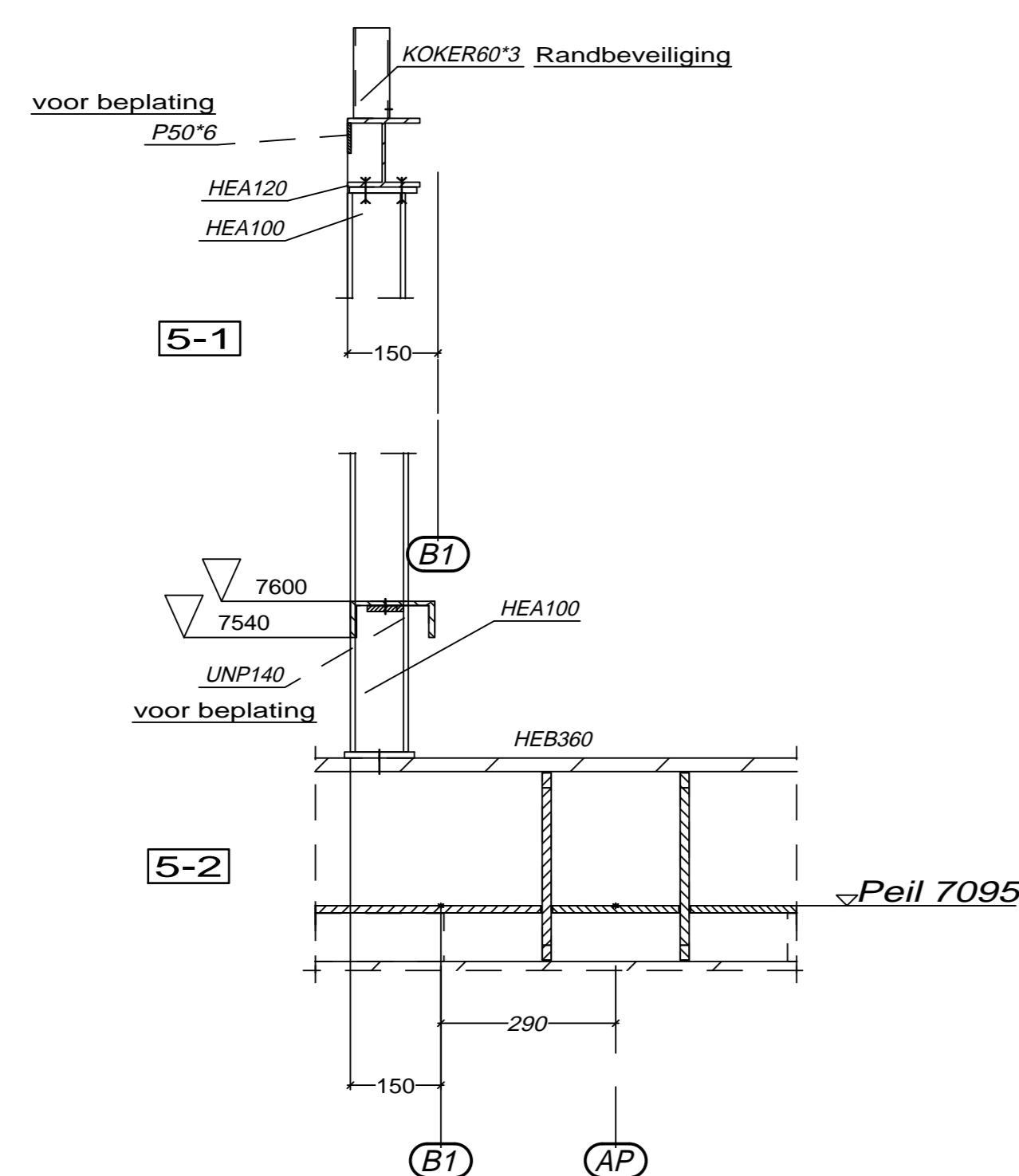
As A.K VwB P120x10 3x M16



As A.P VwB P120x10 3x M16



As A.Q VwB P120x10 3x M16
VwB P150x5 2x M12



BUIS en KOKER kolommen
wapening + betongevuld

- | | | |
|--------|--------|-------------------------------|
| As A.H | As A.O | letterassen
Kantoor |
| As A.I | As A.K | |
| As A.P | As A.Q | |

Schaal 1:100 Details 1:10	DEFINITIEF
Staal kwaliteit : Profielstaal S235JR5 tenzij anders vermeld.	
Staal kwaliteit : Kokers en buizen : S235/S275 tenzij anders vermeld.	
Bout kwaliteit : 8.8 gerolde draad.	
lassen : AvD. Kokers en buizen : Amino=4mm tenzij anders vermeld.	
Conservering : Stralen SA 2.5 - Natlak ZFC 80mu tenzij anders vermeld.	
Projekt : Nwb. Veth propulsie (exc.2)	
Opdr. gevr. Staton bouw bv	
	gemrgt 19.05.2015
	gemrgt 05.05.2015
	gemrgt 13.04.2015
Nijborg 9 3827 DA Rennewoude Tel: 0318-673100 - Fax: 0318-571976 Website: www.staalbouw-cluistra.nl	gemsgd G.Alberti
	ordnr. 1508.3 AANZICHT_5