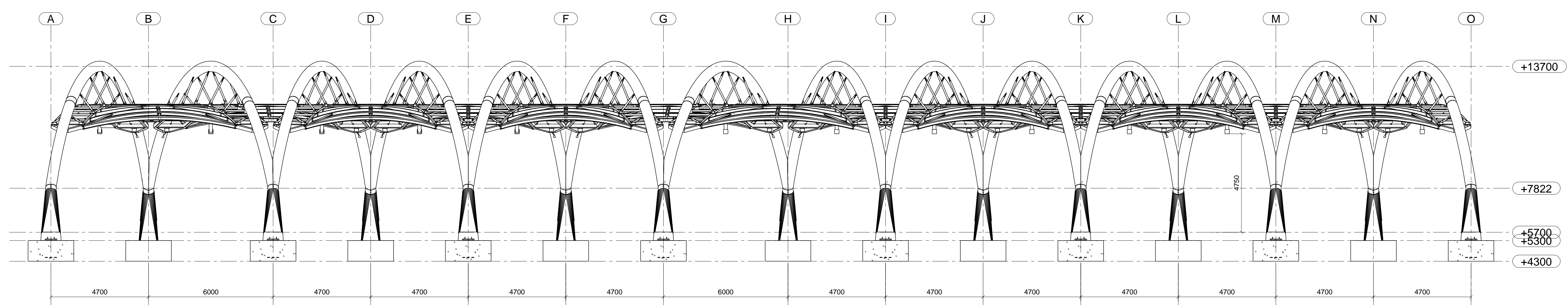
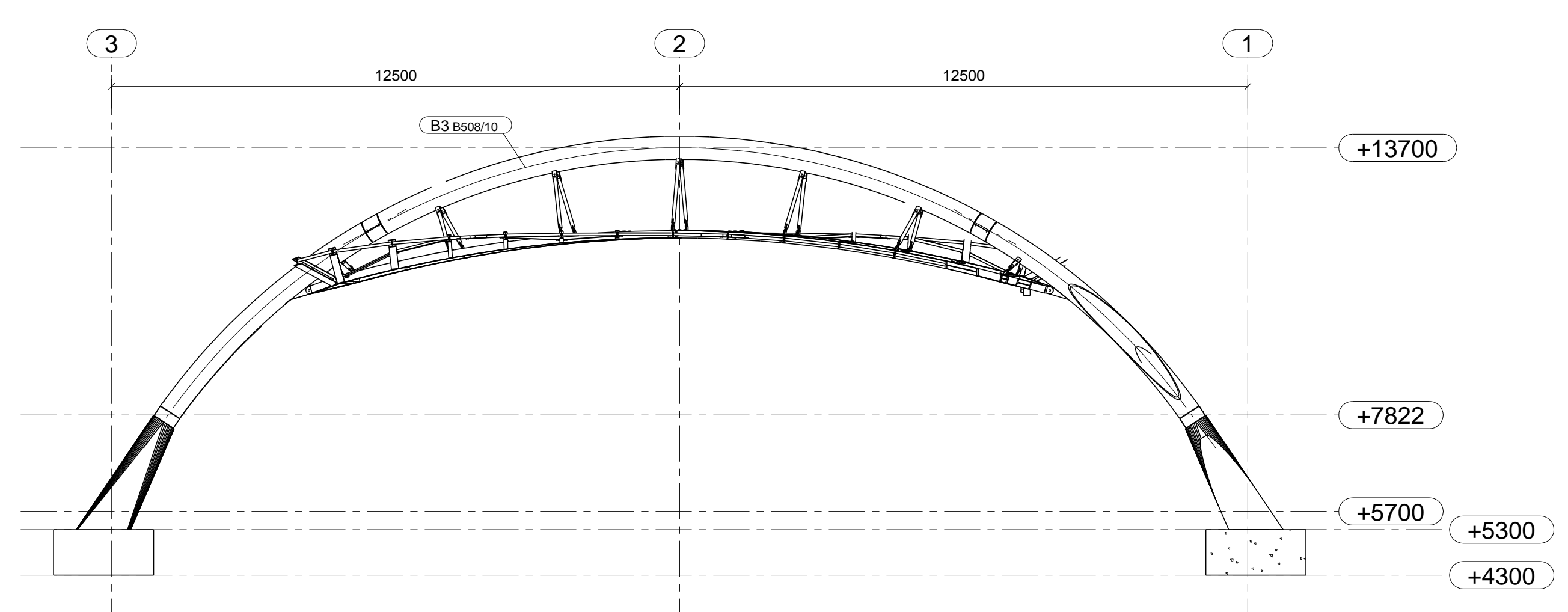


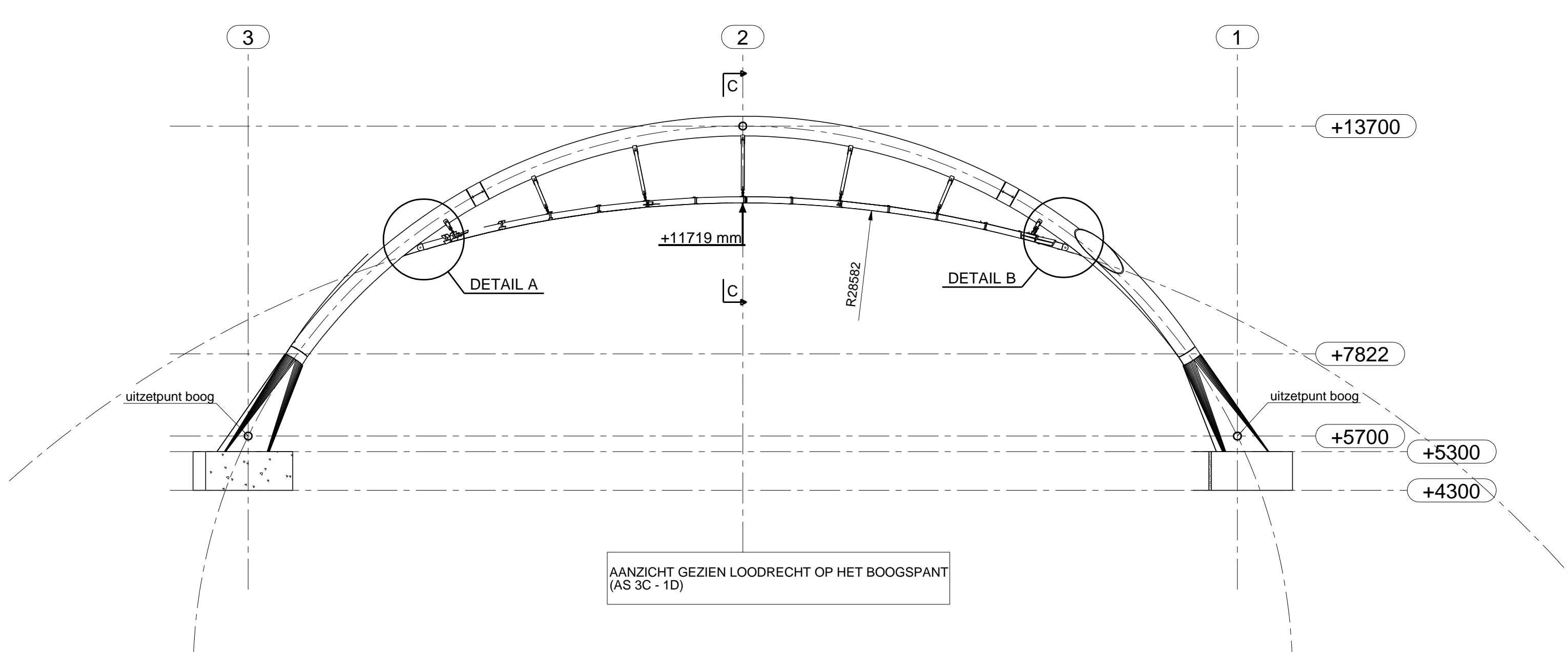
Bovenaanzicht 1:100



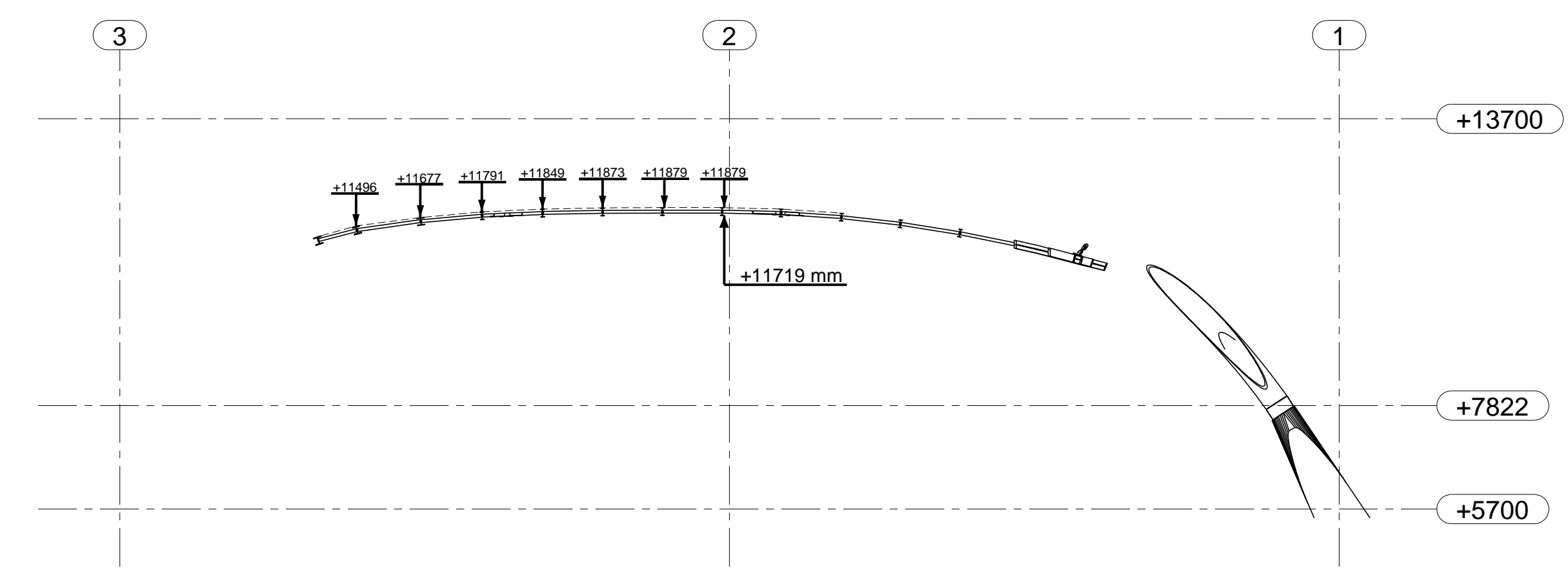
AS 3 1:100



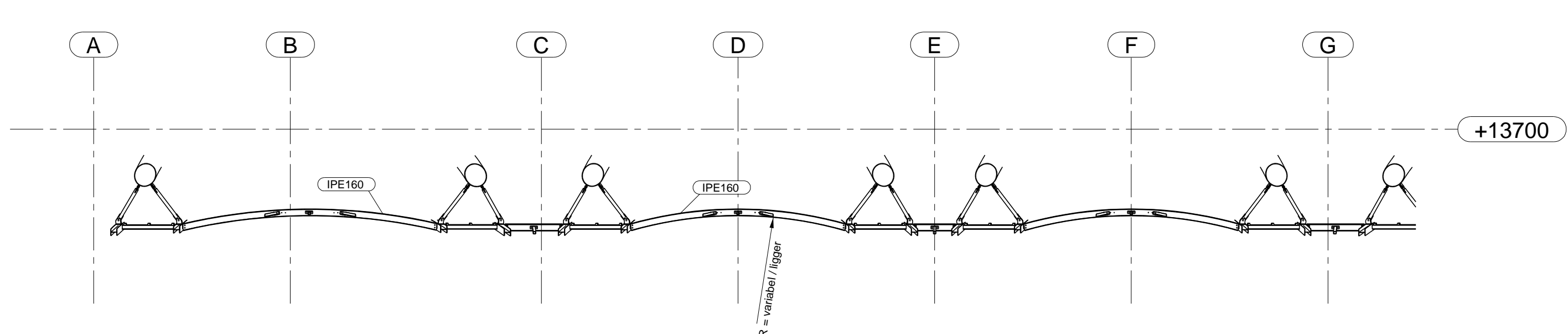
AS C 1:100



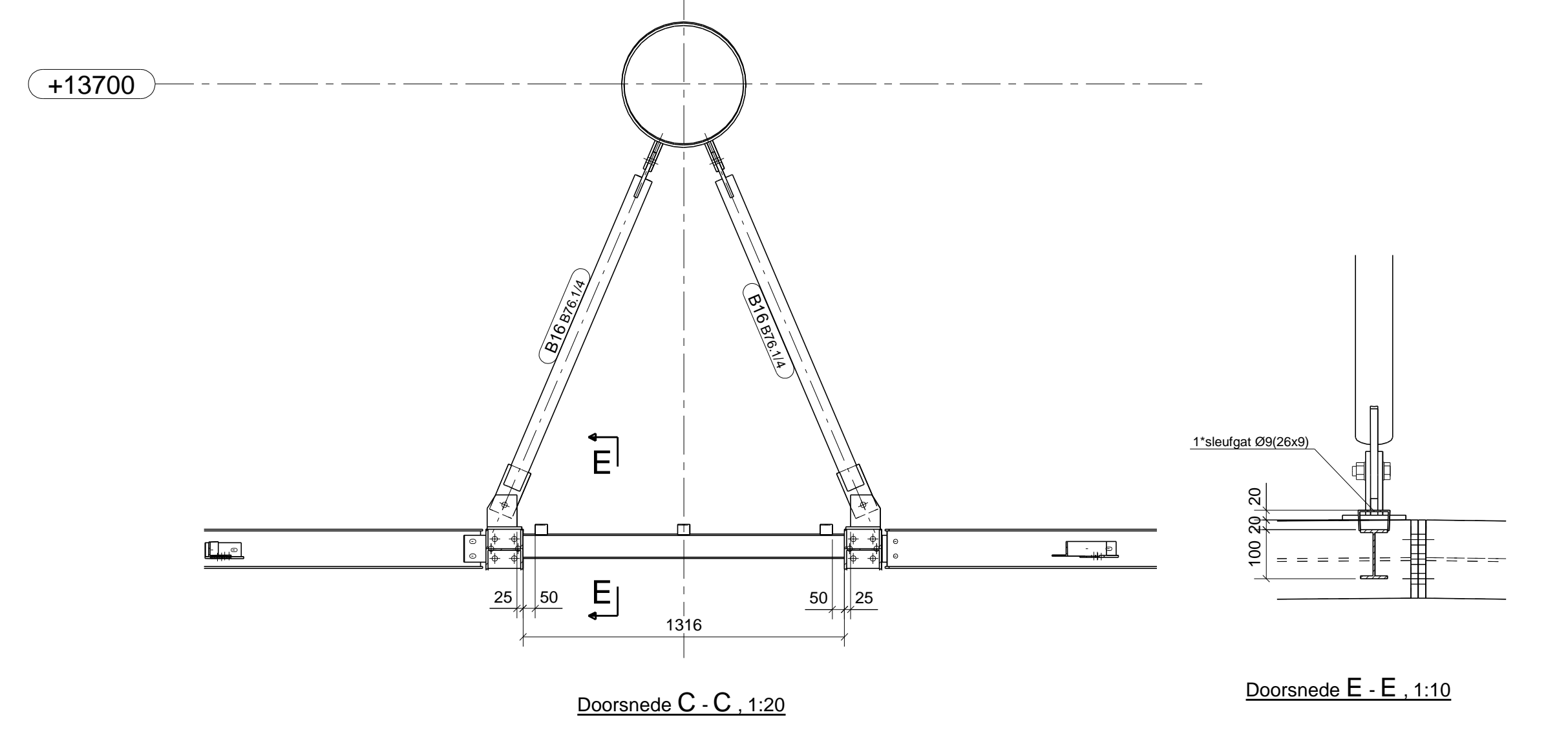
AS 3'C - 1'D 1:100



AS D 1:100

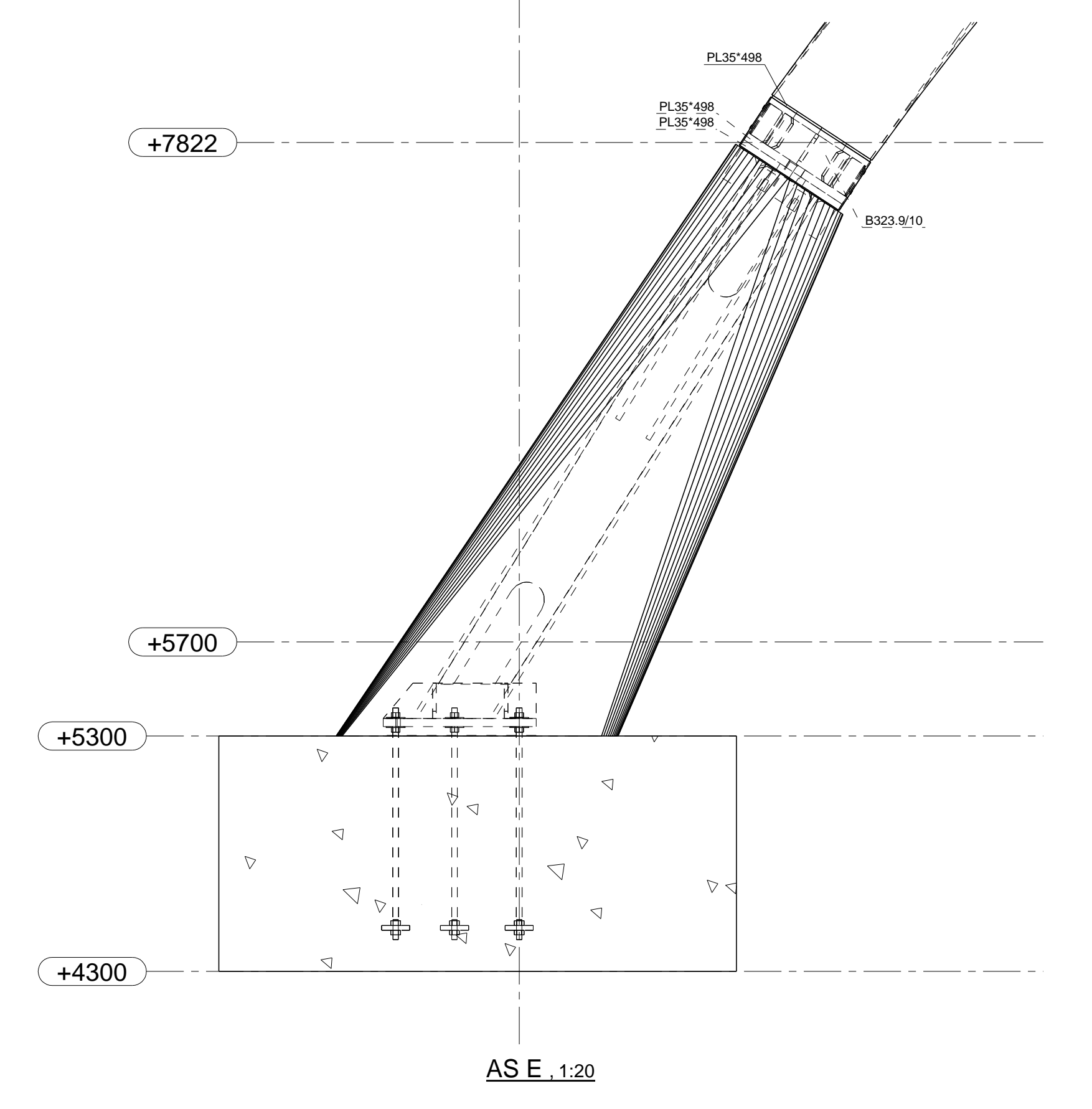


Doorsnede D-D 1:100

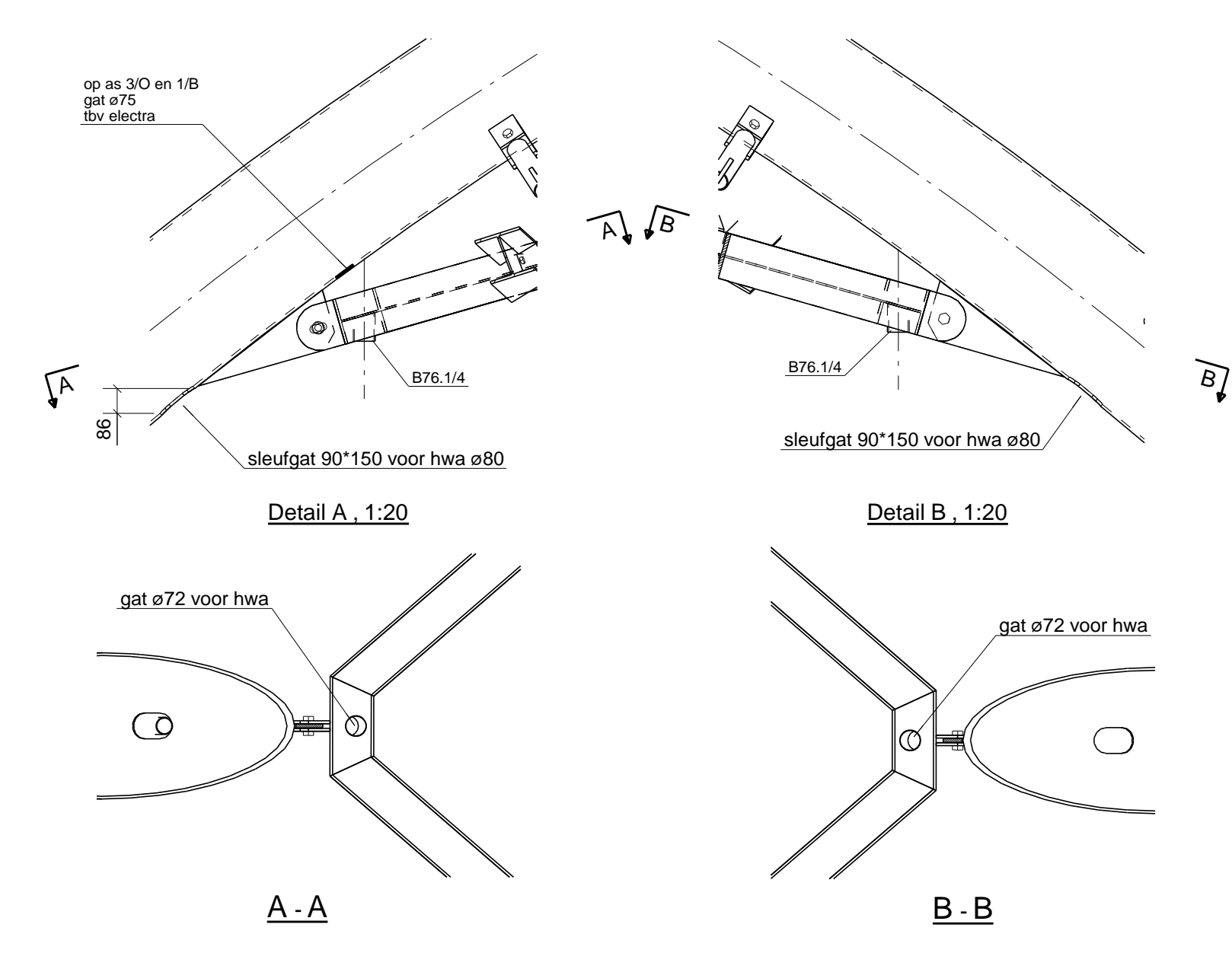


Doorsnede C-C 1:20

Doorsnede E-E 1:10



AS E 1:20



Detail A 1:20

Detail B 1:20

A-A

B-B

CONSERVERING :  
THERMISCH VERZINKEN + COATEN  
(2-laagsverfsysteem, min 200 micron)

HOOFDBUIS : RAL9010  
OVERIG STAAL : RAL7037

4	d	definitief	31-01-2013
3	c	diversen	17-01-2013
2	B	diversen	06-01-2013
1	II	diversen	24-12-2013

REV. NO. : REVISIE OMSCHRIJVING: REVISIE DATUM:

**willemse**  
Staalconstructies  
Thinking steel.

Vijfhuizenbaan 10  
5126 PV Gilze  
Holland  
T +31 (0) 161 452471  
F +31 (0) 161 451422  
E engineering@thinkingsteel.nl  
I www.thinkingsteel.com

OPDRACHTGEVER : H&D Civiel BV

WERK : APM Terminal Maasvlakte II

ONDERDEEL : STAALOVERZICHT

fase	naam	post	post
1	bus 508	60667	-1
2	onderkant + ophanging	60667	-2
3	overig staal	60667	-3
4	schaaldiven	60667	-4
5	montagesteun onder	60667	-5
6	montagebok	60667	
9	metabozenden	60667	
12	beton	60667	

GET.	AV	SCHAAL	LASSEN	WERK	BLAD
D.D.	08-12-2013	1:10	4	60667	G [3]
PLOTD.	09-09-2014				