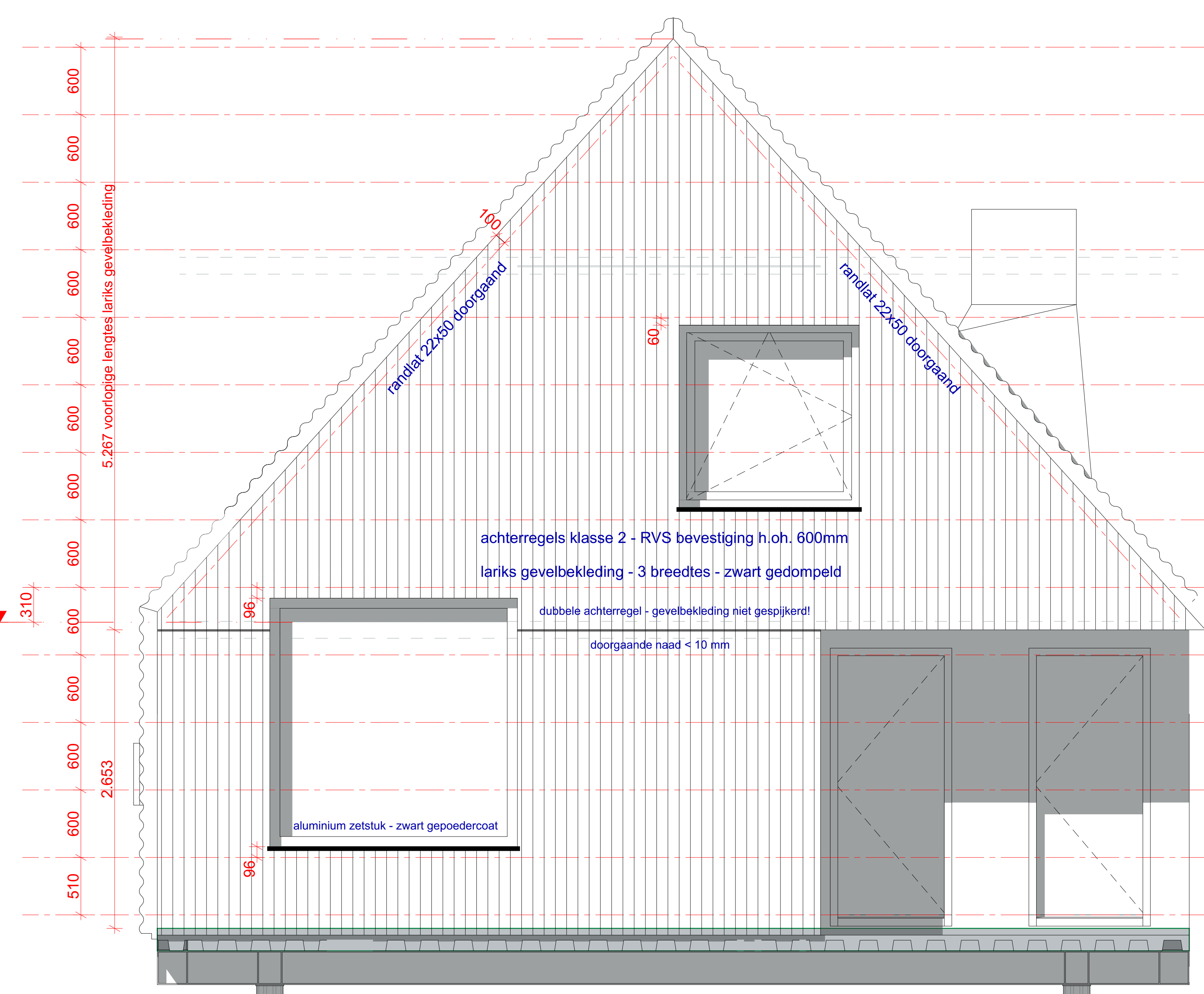
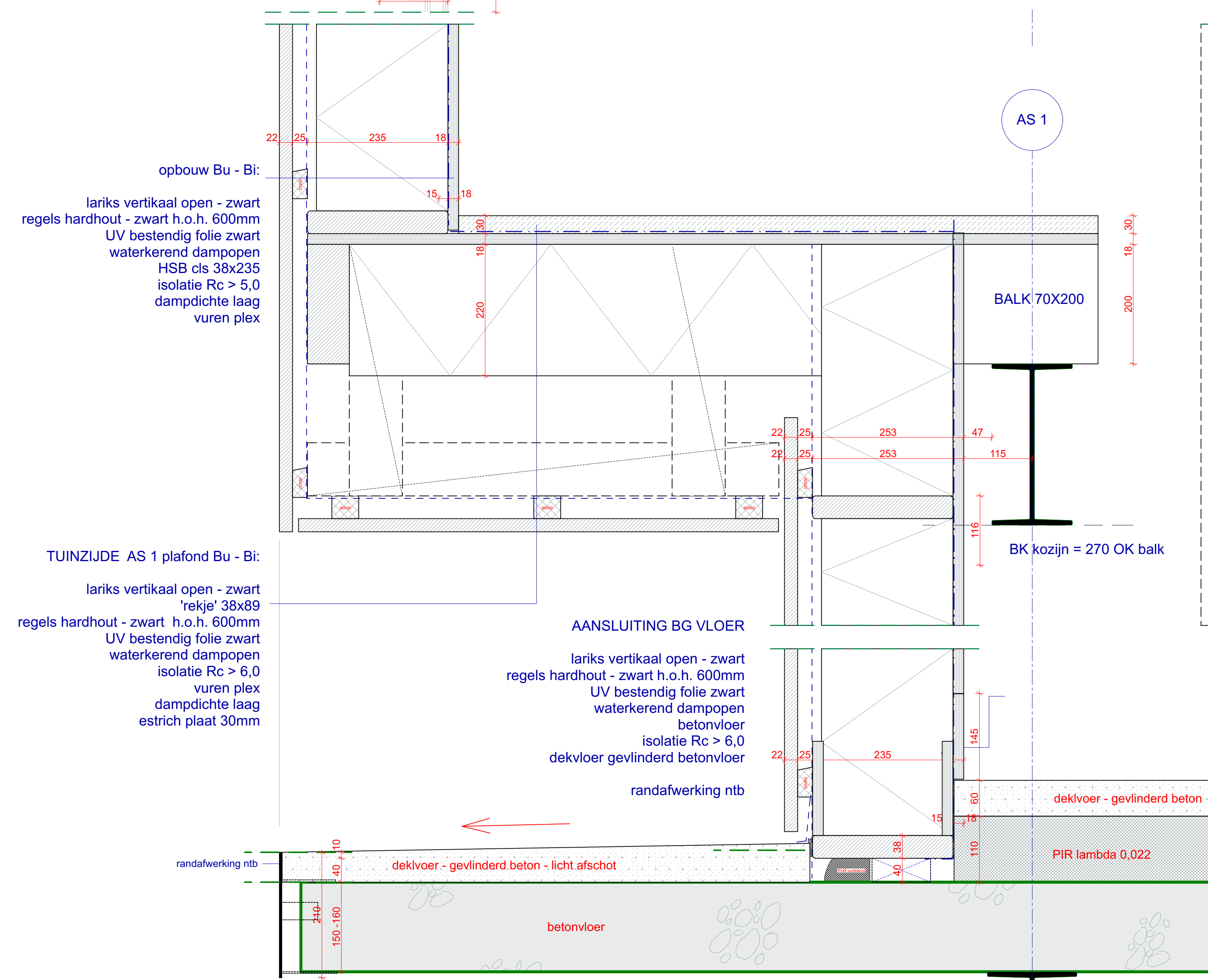


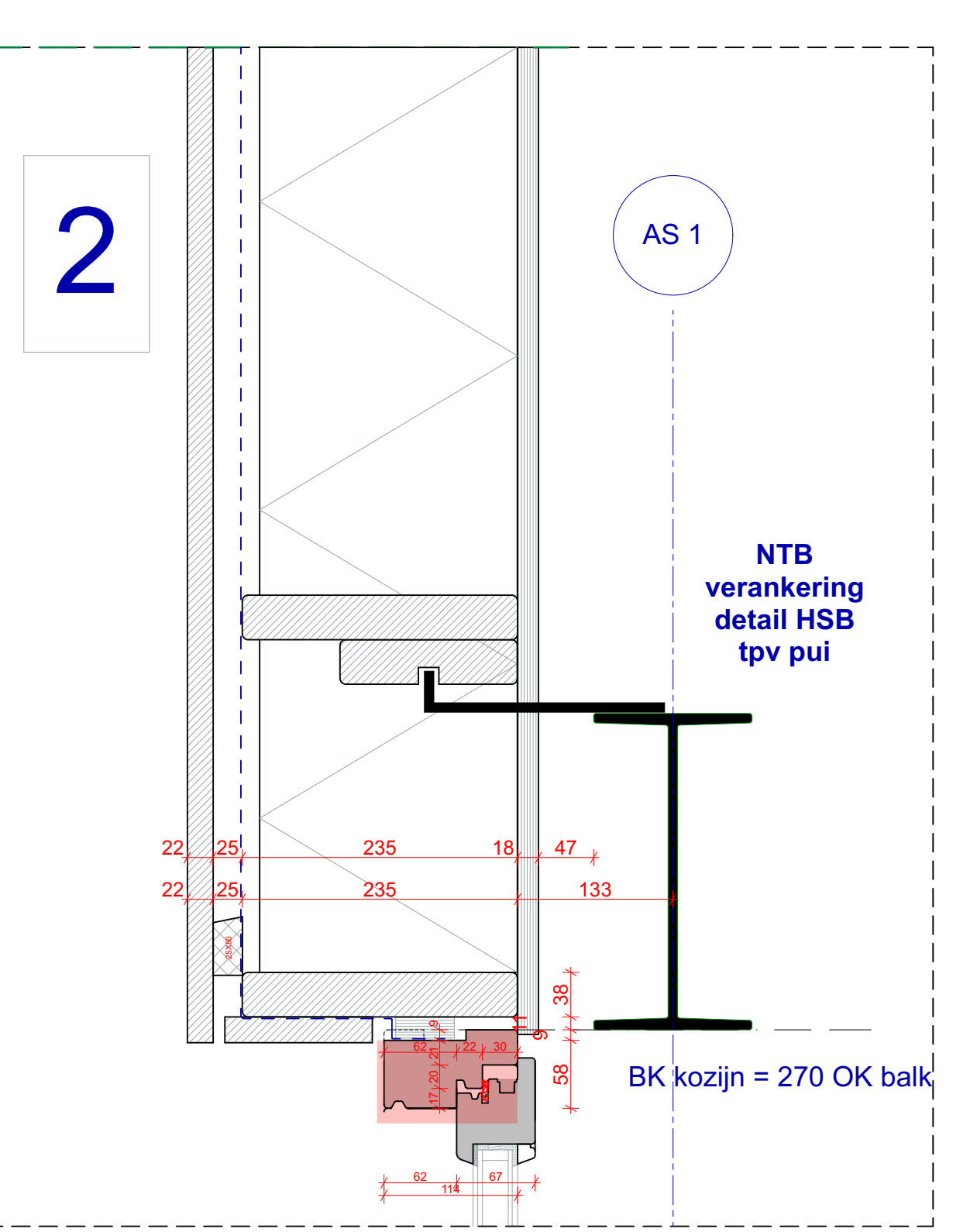
TUINGEVEL as 1



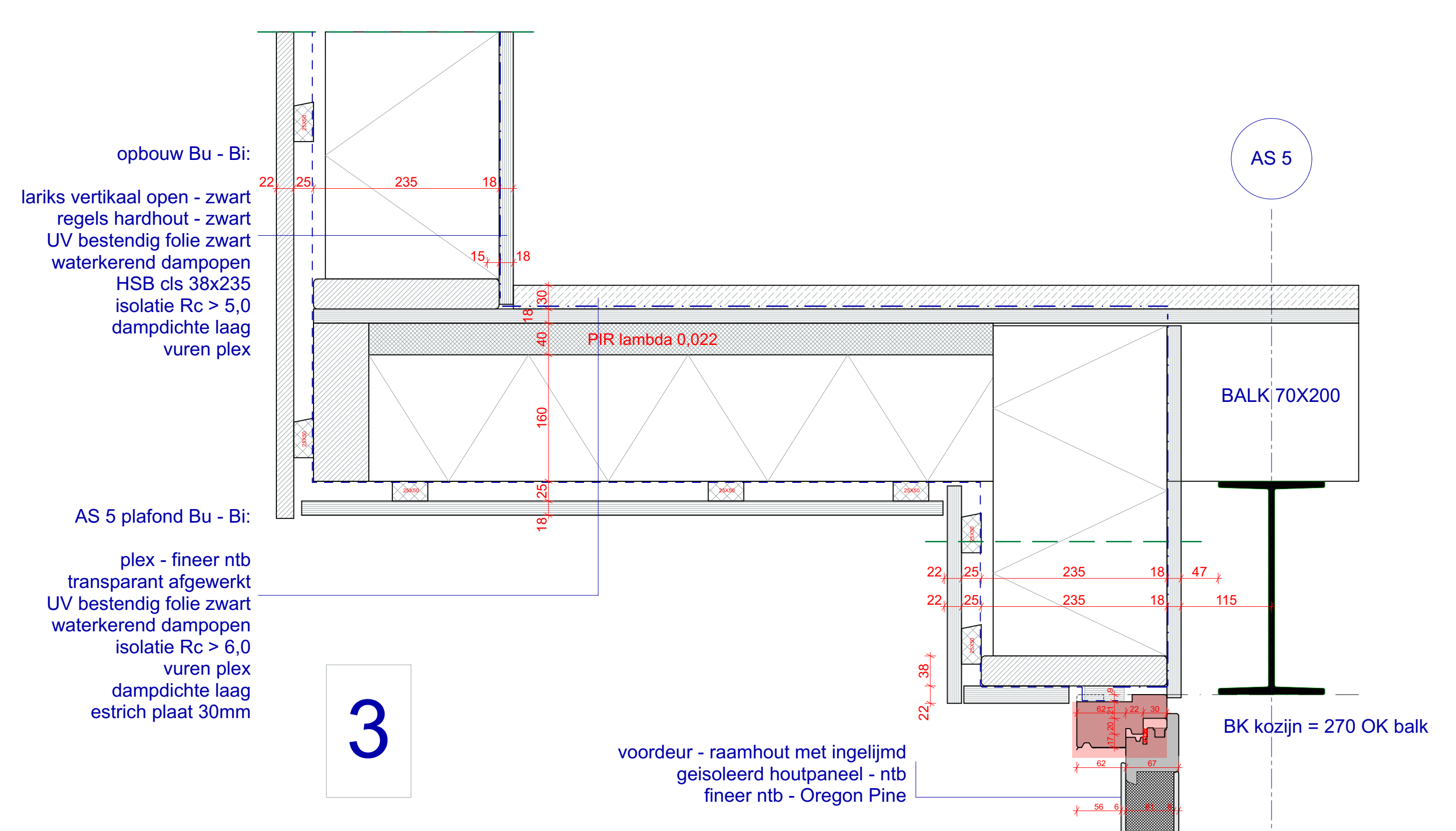
VOORGEVEL as 5



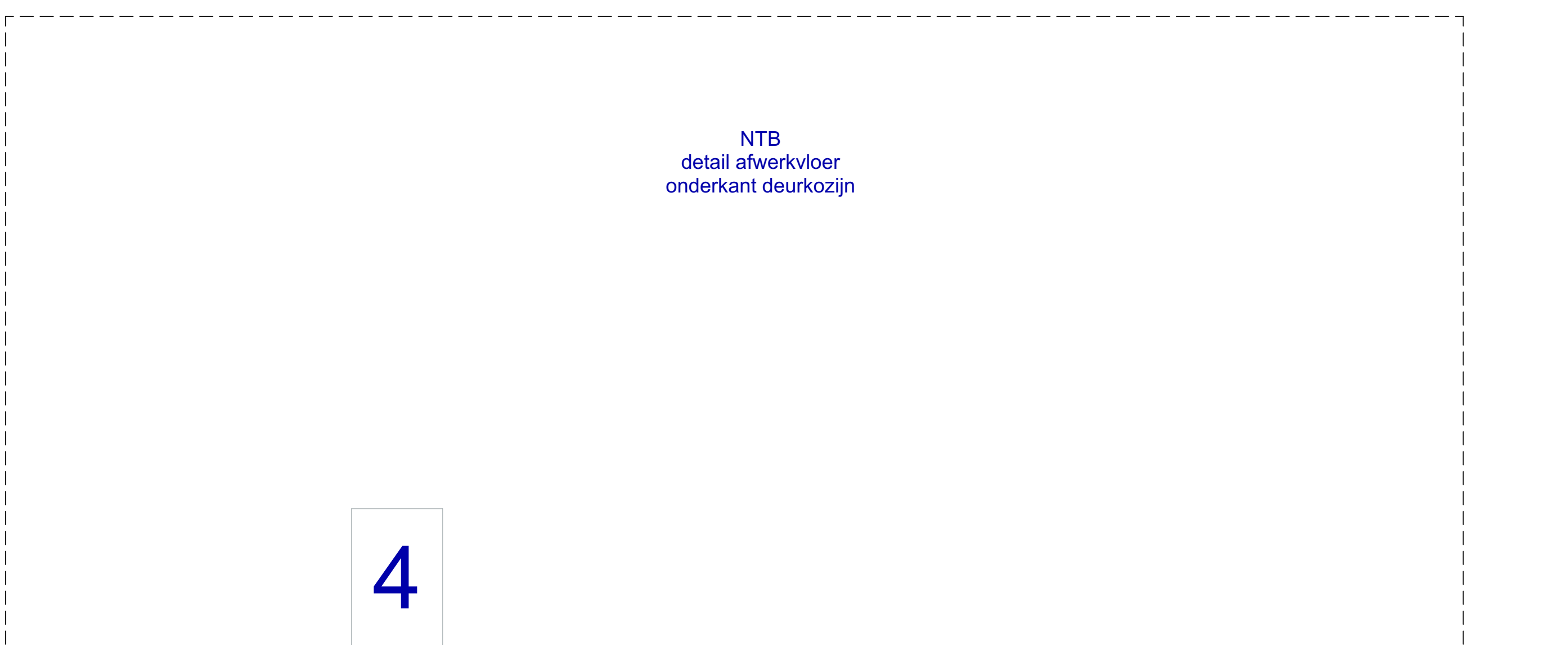
1



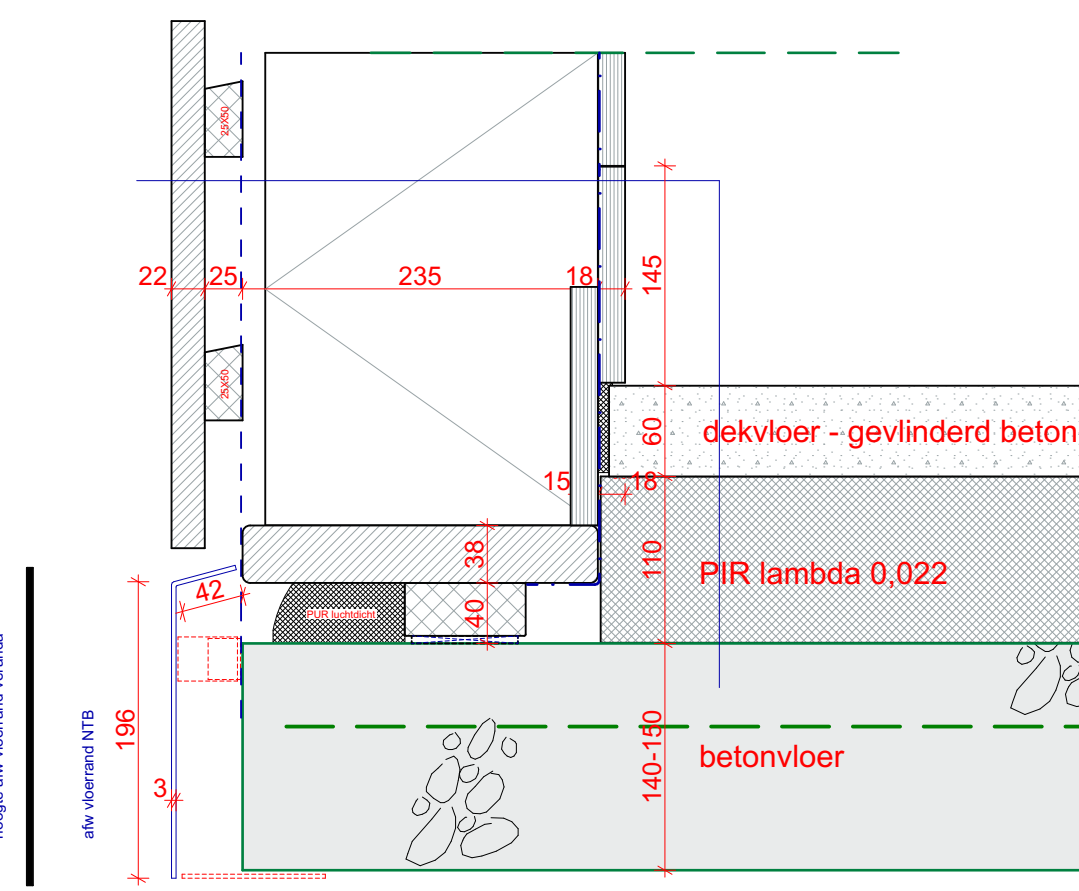
2



3



4



5

MAATVOERING INDICATIEF - IN WERK TE CONTROLEREN EN OP TE NEMEN

zofa
ARCHITECTEN

postbus 1027
9701 ba groningen
t (050) 316 67 00
v (06) 206 11 11
www.zofa.nl

onderwerp:
HSB gevelbekleding EXTERIEUR

opdrachtgever:
Bakker

project:
Lamphuis
Luddeveer

ontw.:
MK | ATZ

afw.:
—

schaal:
1:25, 1:5

datum:
2020-05-01

projectnummer:
17006

bladnummer:
—

UO-07.17

uitvoering:
concept

Alle tekeningen behoren toe alle rechten eigendom van zofa en mogen derhalve niet door derden gekopieerd en / of verspreid worden.