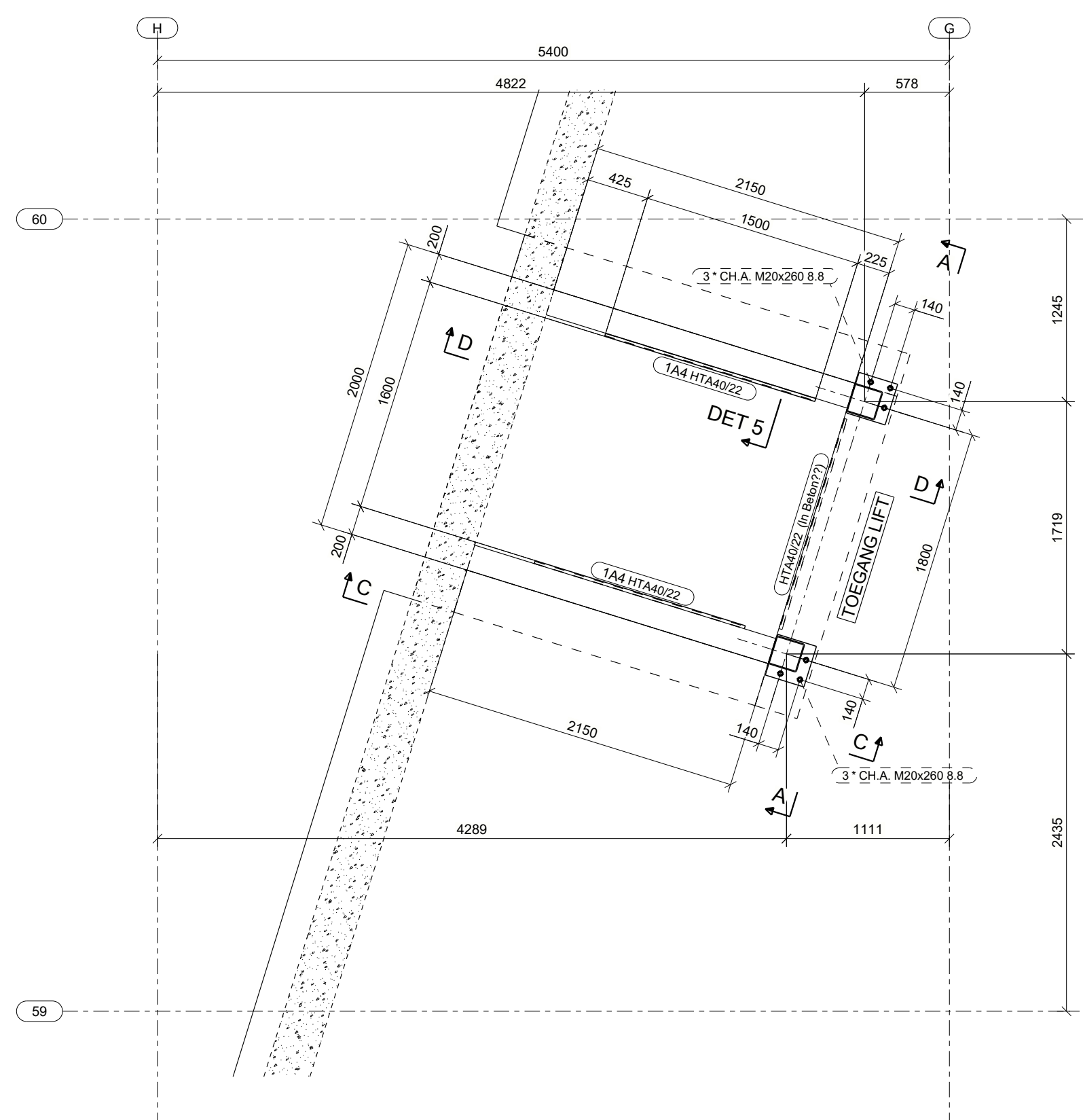
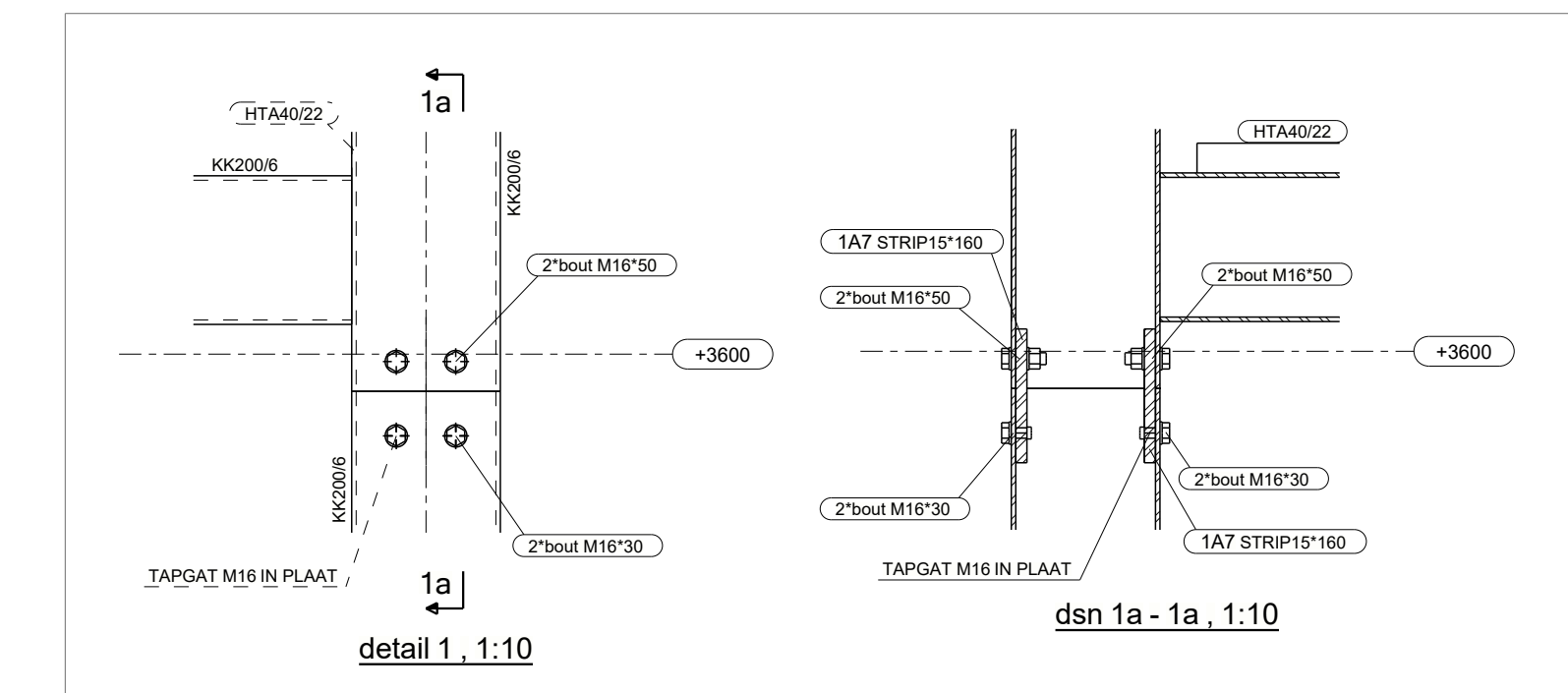


Niveau +3600, 1:35

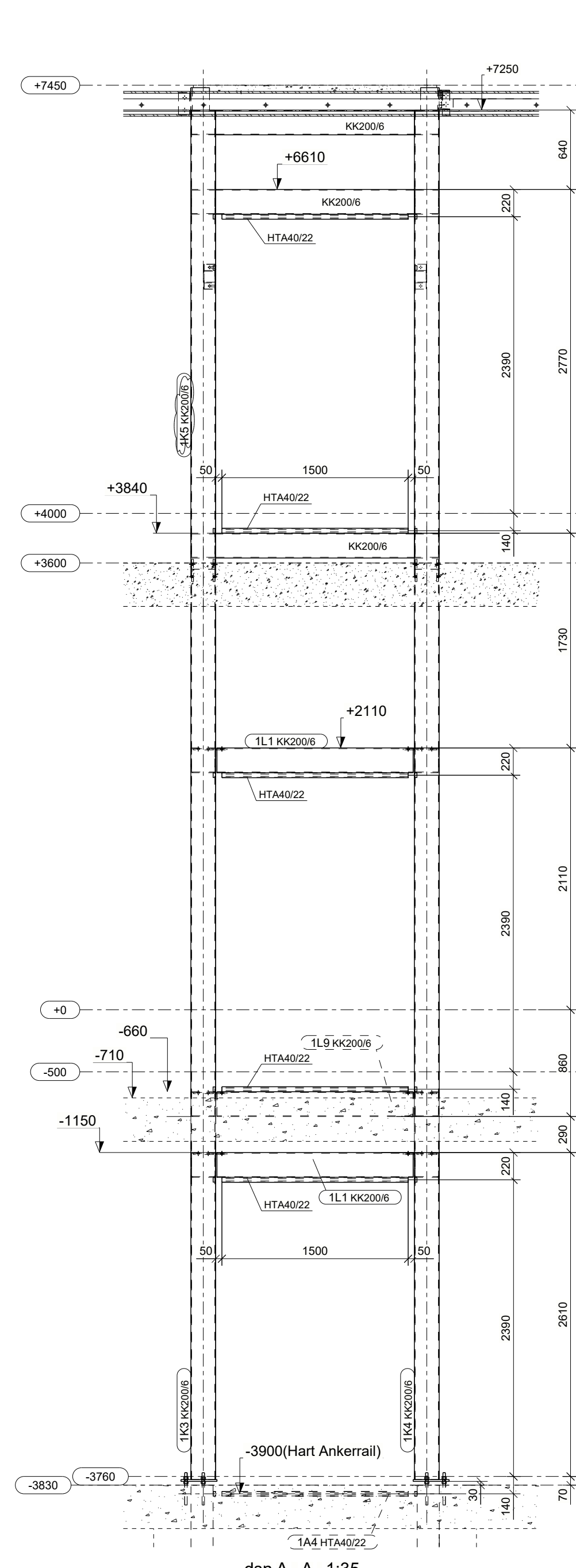


Niveau -3830, 1:35

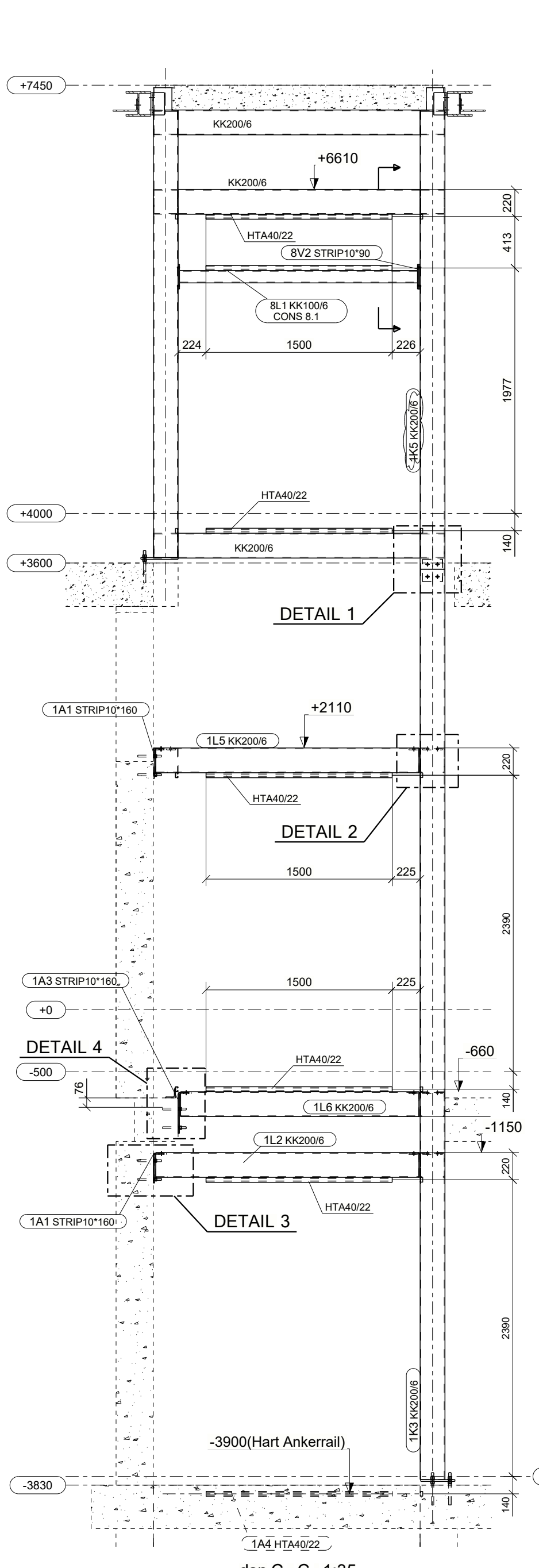


detail 1, 1:10

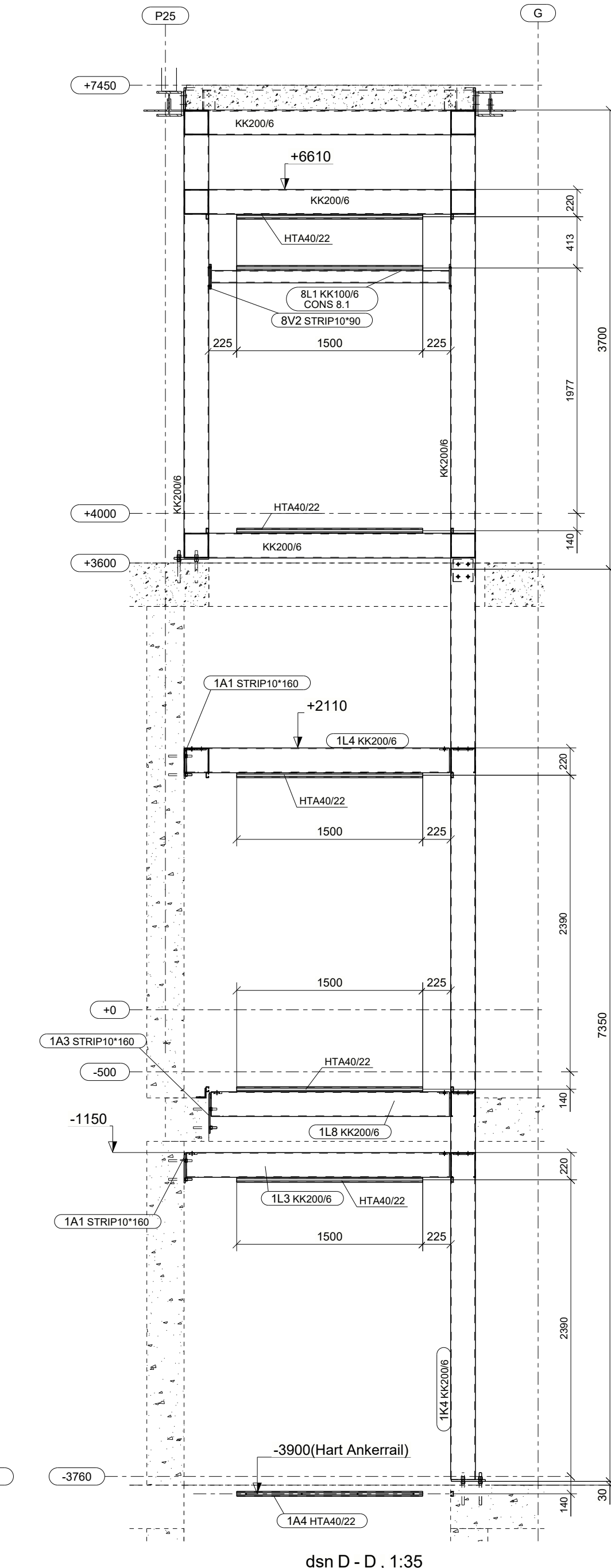
dsn 1a - 1a, 1:10



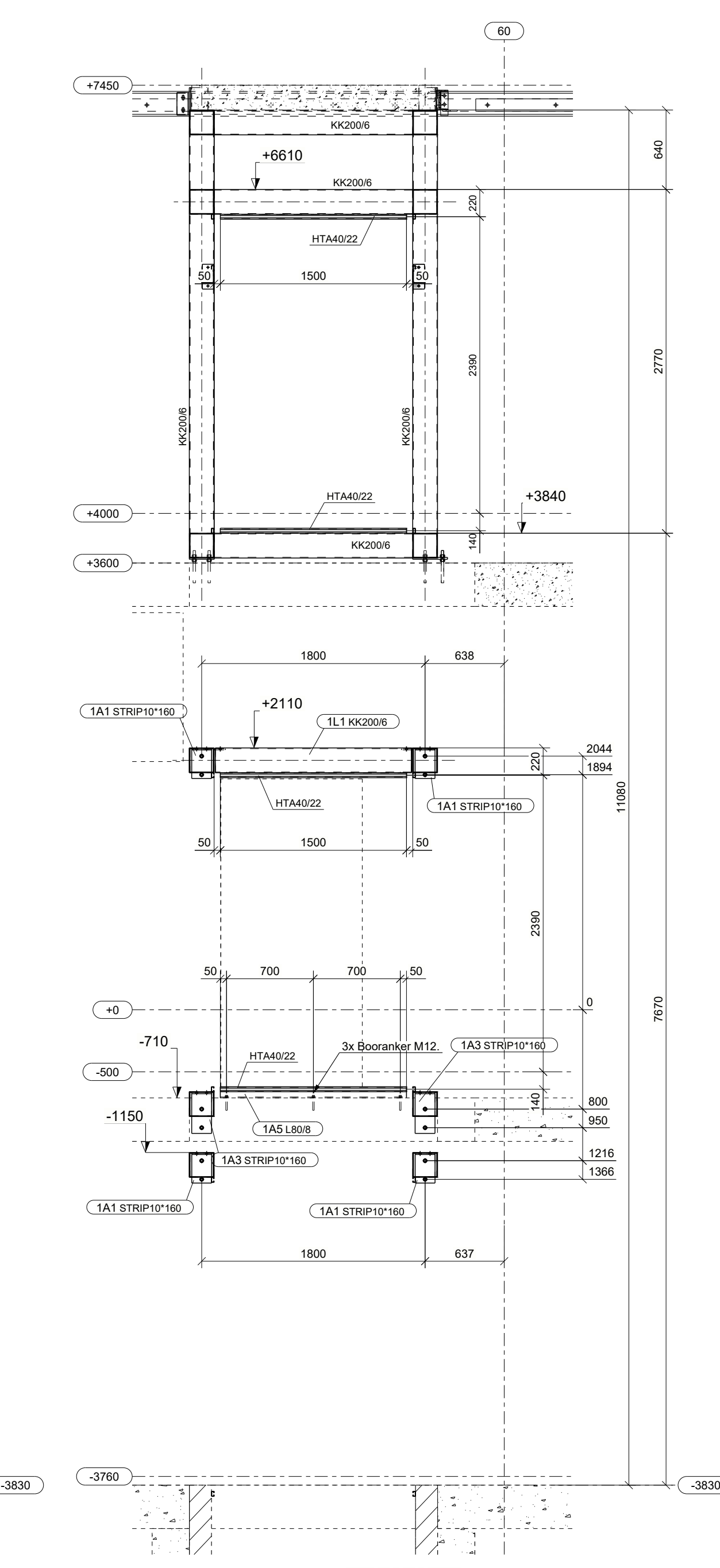
dsn A - A, 1:35



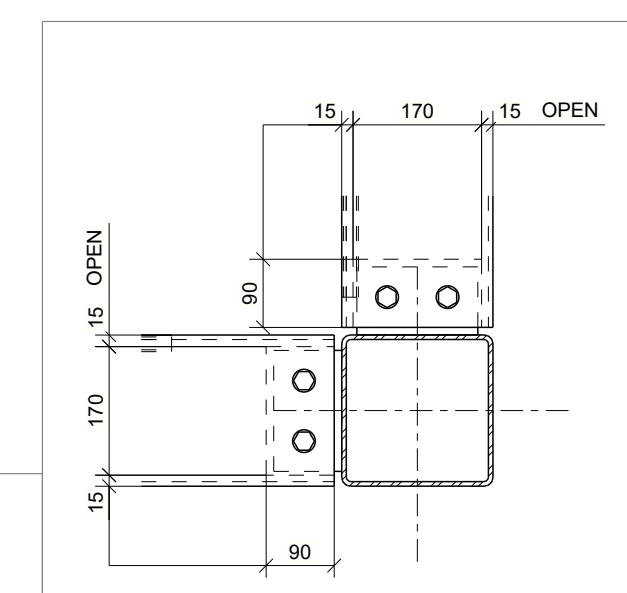
dsn C - C, 1:35



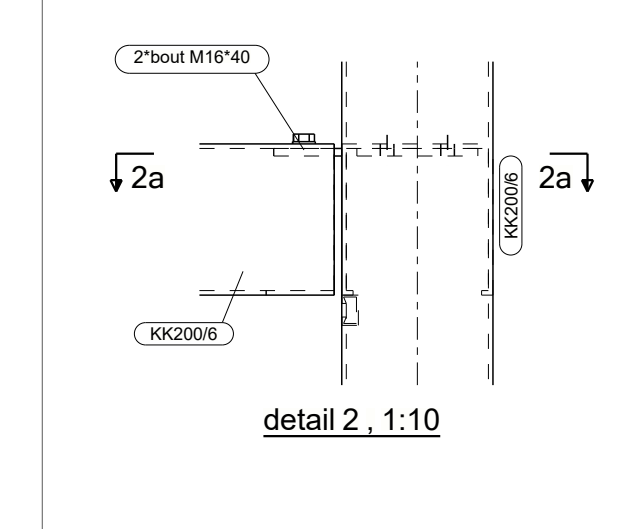
dsn D - D, 1:35



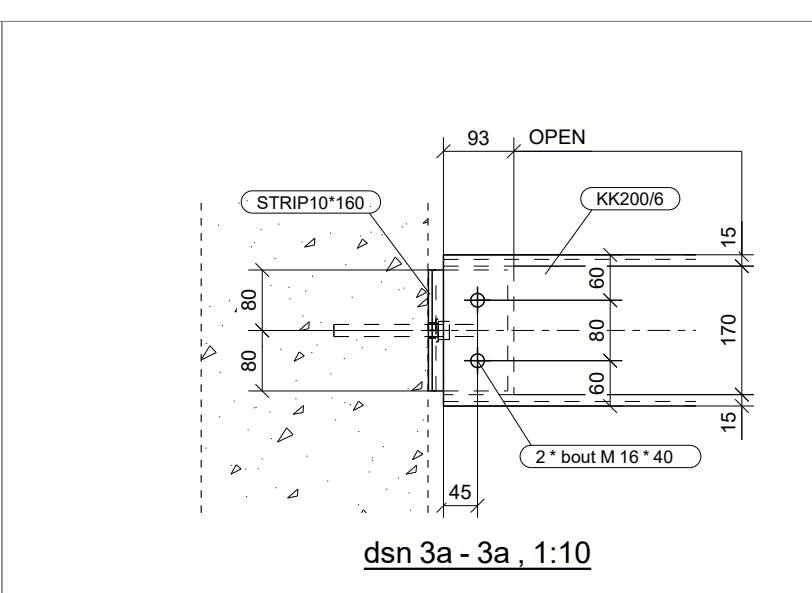
dsn B - B, 1:35



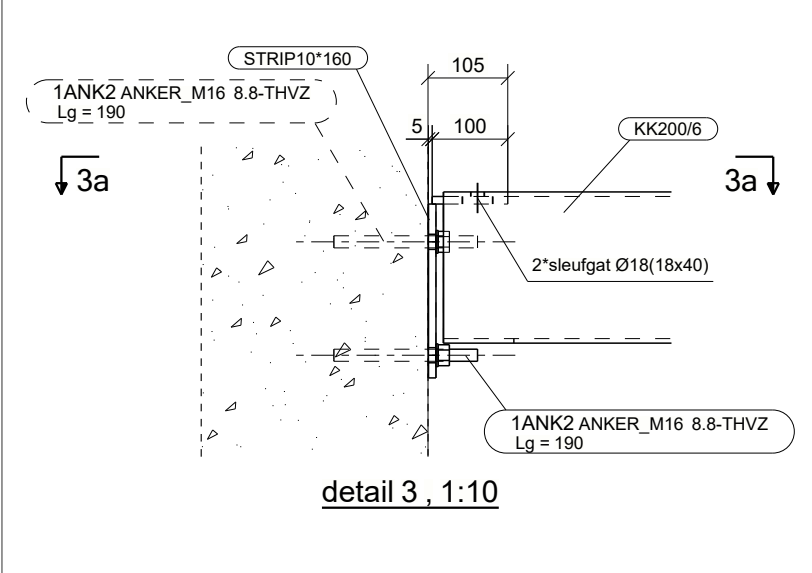
dsn 2a - 2a, 1:10



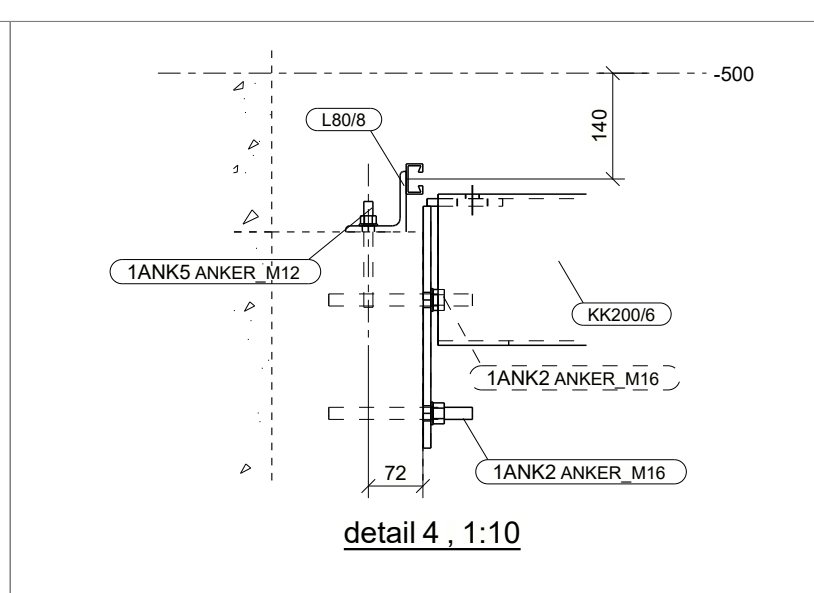
detail 2, 1:10



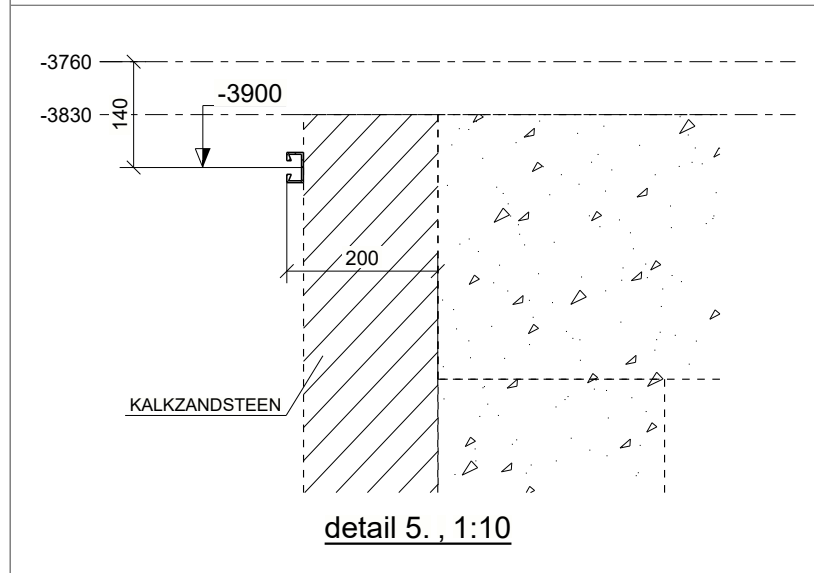
dsn 3a - 3a, 1:10



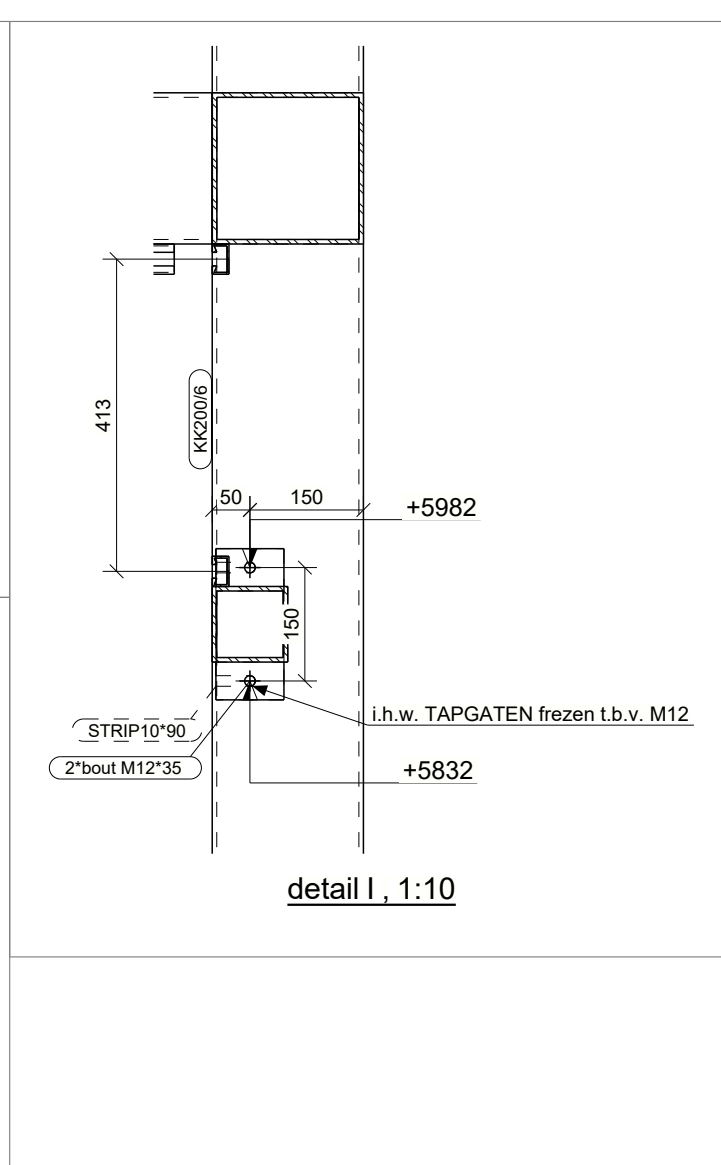
detail 3, 1:10



detail 4, 1:10



detail 5, 1:10



detail I, 1:10

Executieklasse: EXC2

DEFINITIEF

Rev. nr.	Rev. fase	Revisie omschrijving	Rev. datum
6	-	DEFINITIEF Definitief voor meerwerk 1018 fase 8	AKa 20-04-2020
5	-	TER VRIJGAVE Meerwerk nummer 1018	AKa 17-04-2020
4	-	DEFINITIEF VOOR UITVOERING	HMu 17-01-2020
3	-	DEFINITIEF	HMu 19-12-2019
2	-	VOORLOPIG Opmerkingen gecontroleerde tekeningen verwerkt	HMu 10-12-2019
1	-	VOORLOPIG	HMu 03-12-2019

Oprachtgever: J.P. van Eesteren B.V. (Gouda)
 Hoofdconstructeur: Royal Haskoning DHV
 Werk: Noordboulevard paviljoen
 Adres: Scheveningen
 Onderwerp: LIFTSCHACHT AS 59-60

Getekend: Alex Kampstra
 Schaal: zie aanzicht
 Formaat: A1
FASE 1 en 8

Materiaal: S235 T.A.V. Bouten: 8.8-THVZ gerold T.A.V.
 Lassen: zie werkplaatstekeningen
 Algemeen: S235 a = 0,38 x t S355 a = 0,44 x t T.A.V.

Projectnummer: 290082
 Tekening: G [16]

BOUWEN BEGINT MET STAAL



T: 0226-453 544 (algemeen)
 T: 0226-363 690 (bekeramer)