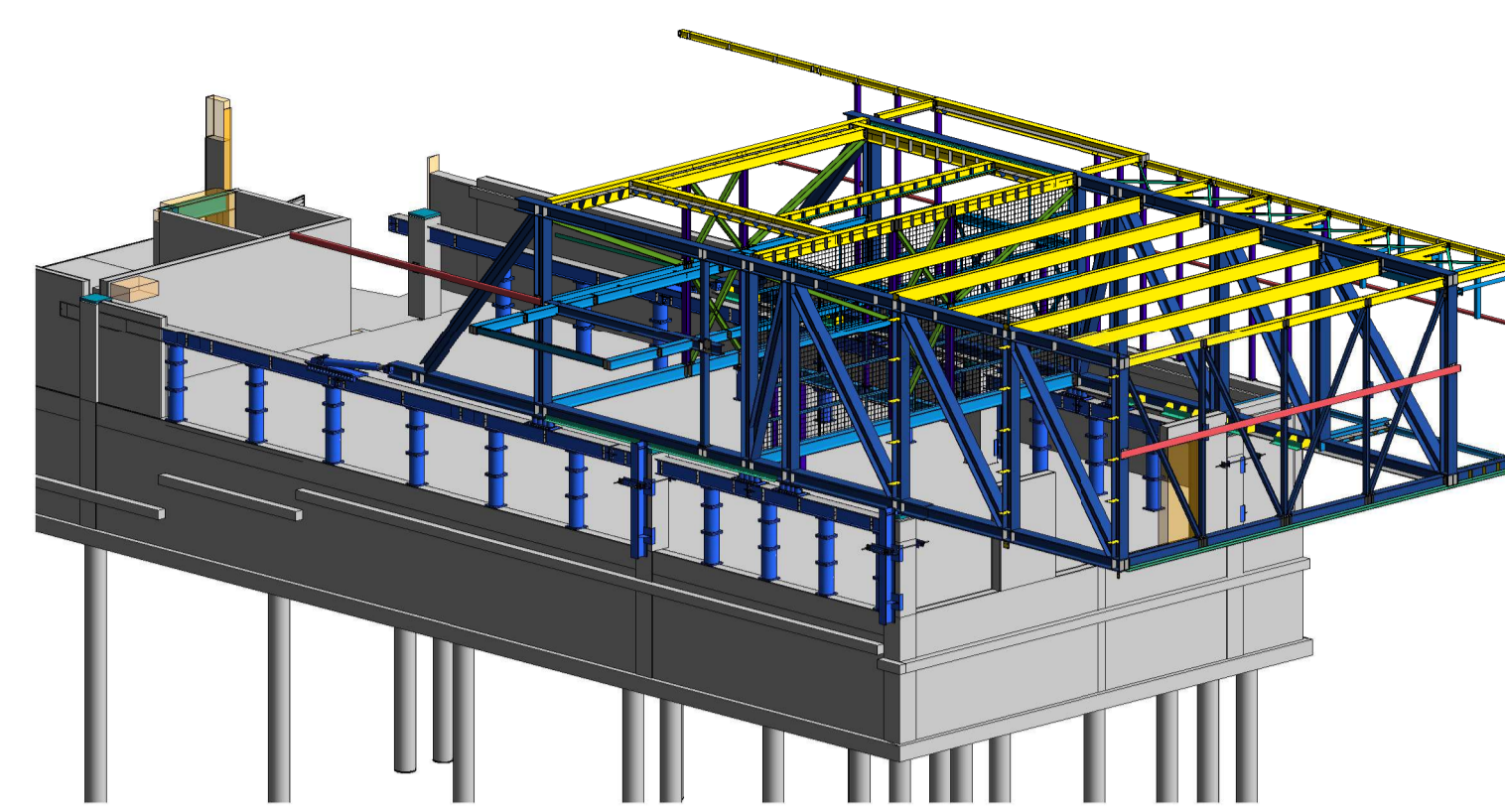
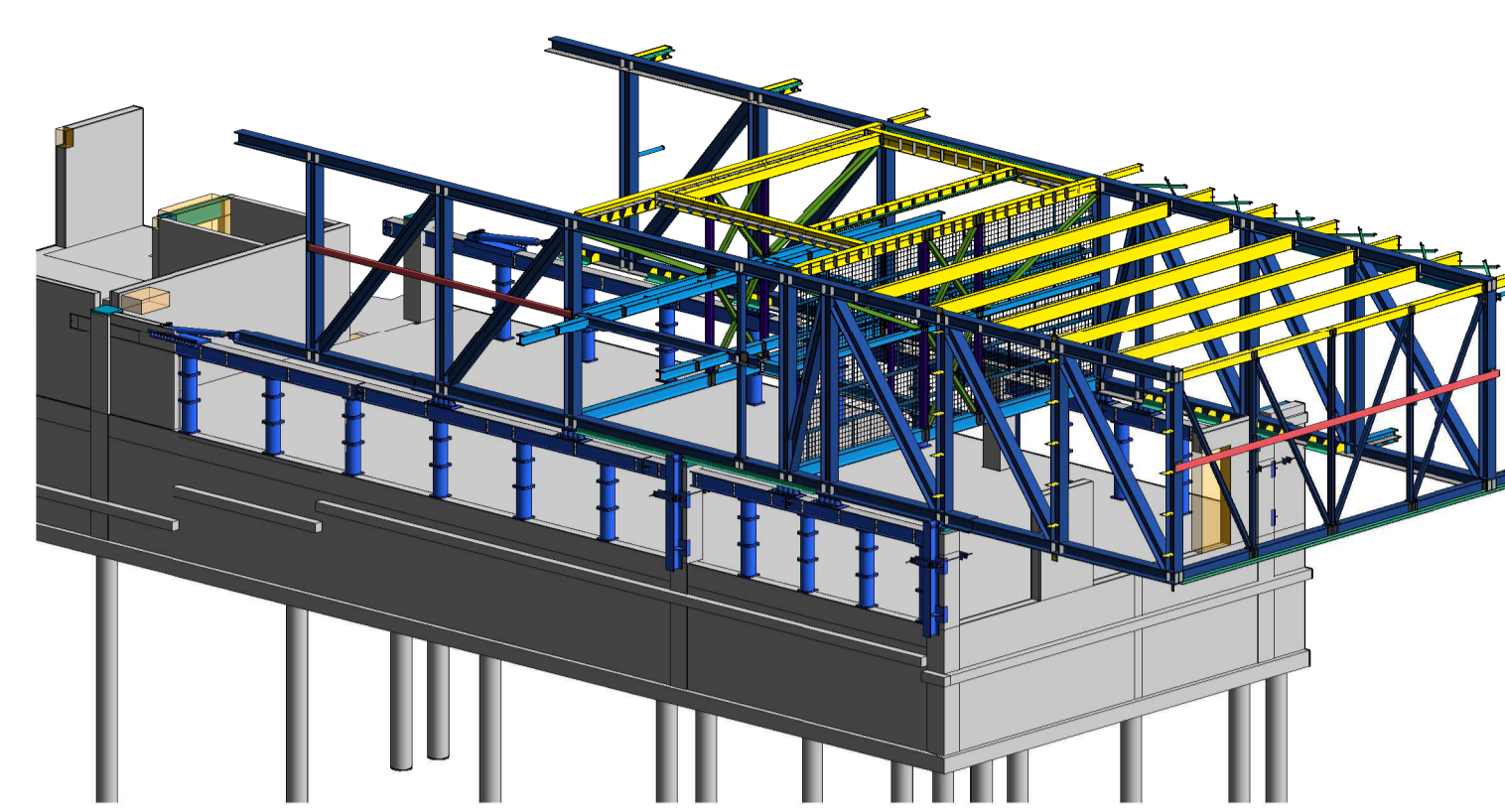


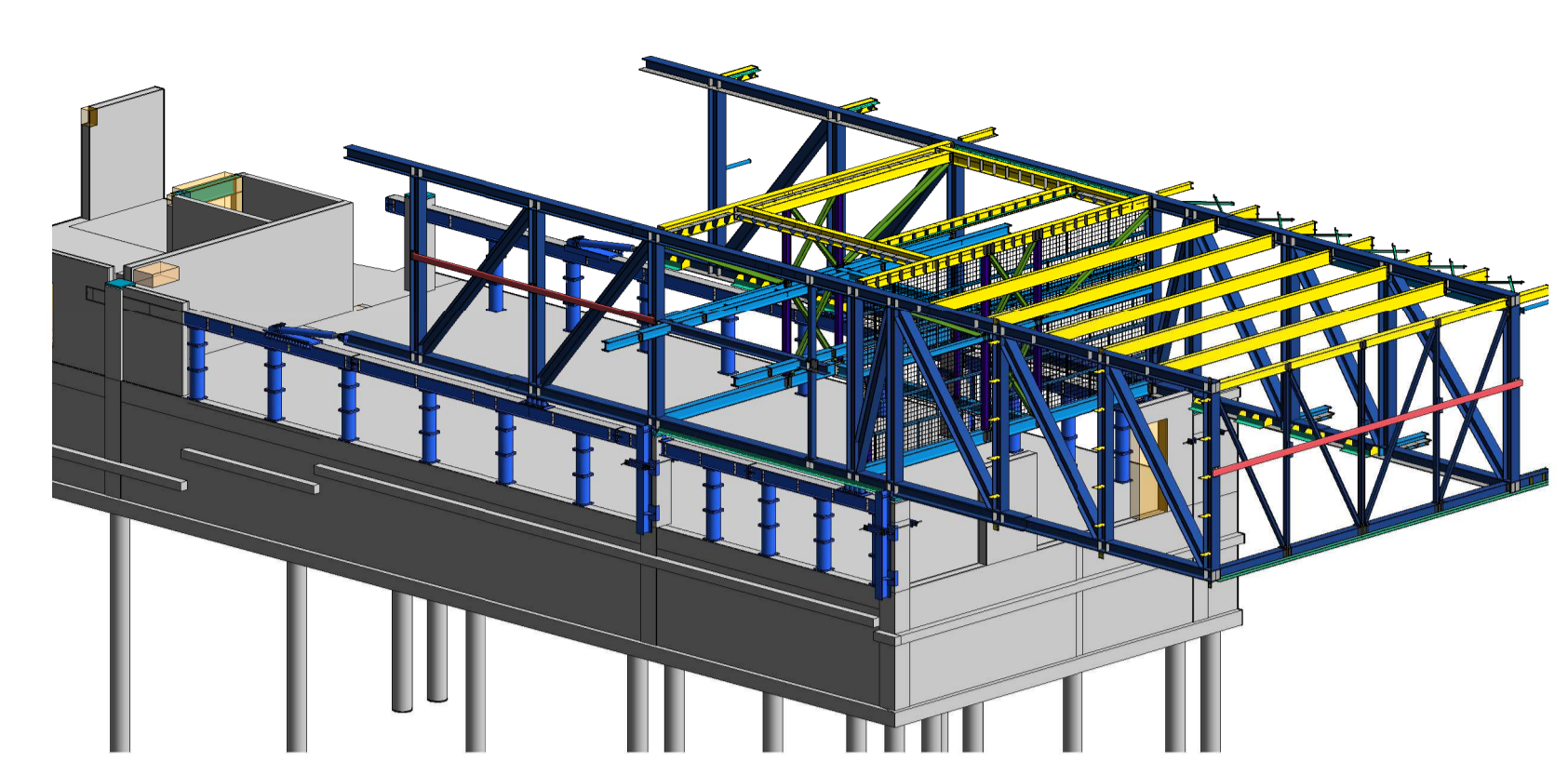
1 Fase 1 - opbouwen sectie Q-K



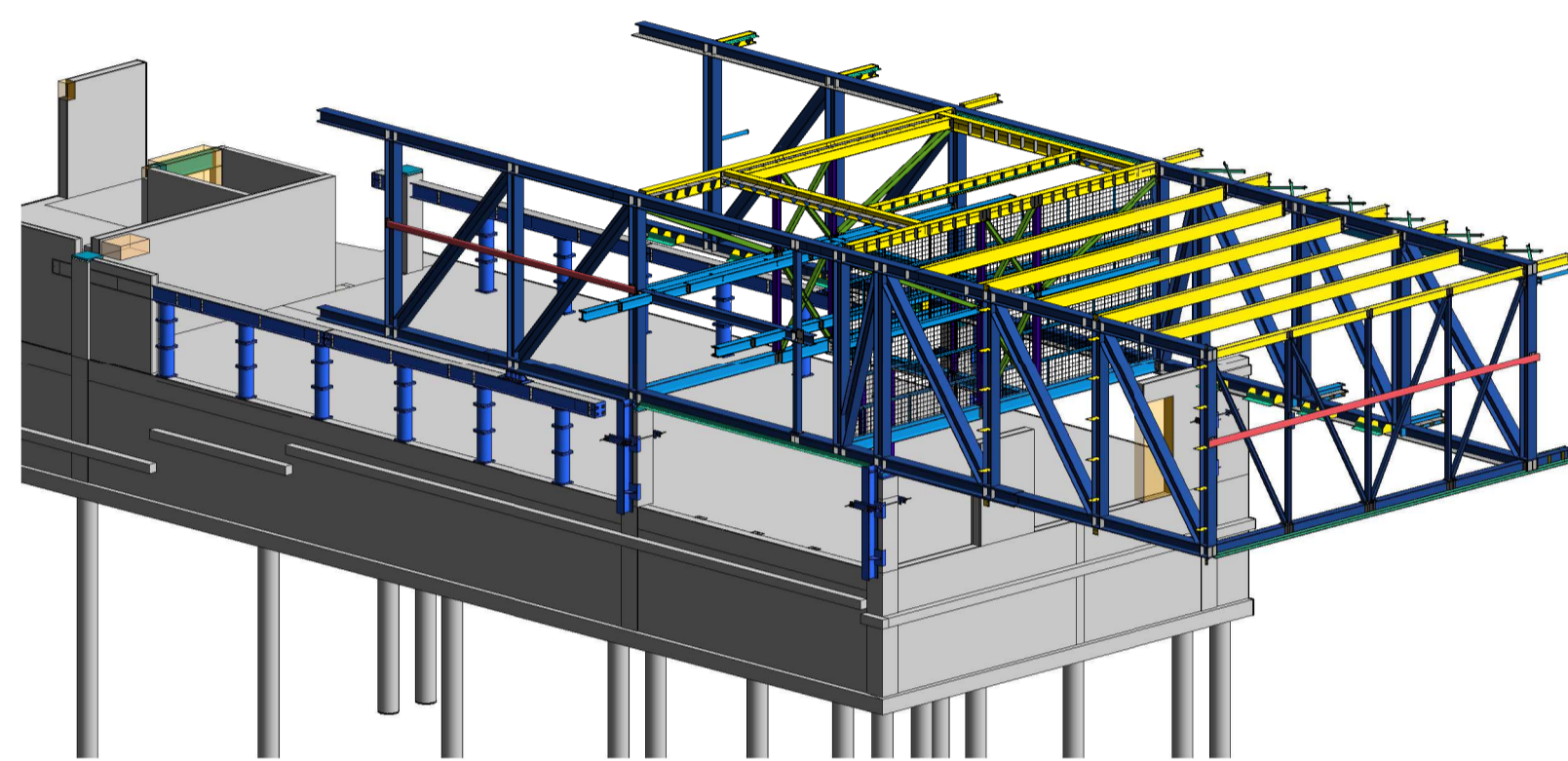
2 Fase 2 - lanceren sectie Q-K



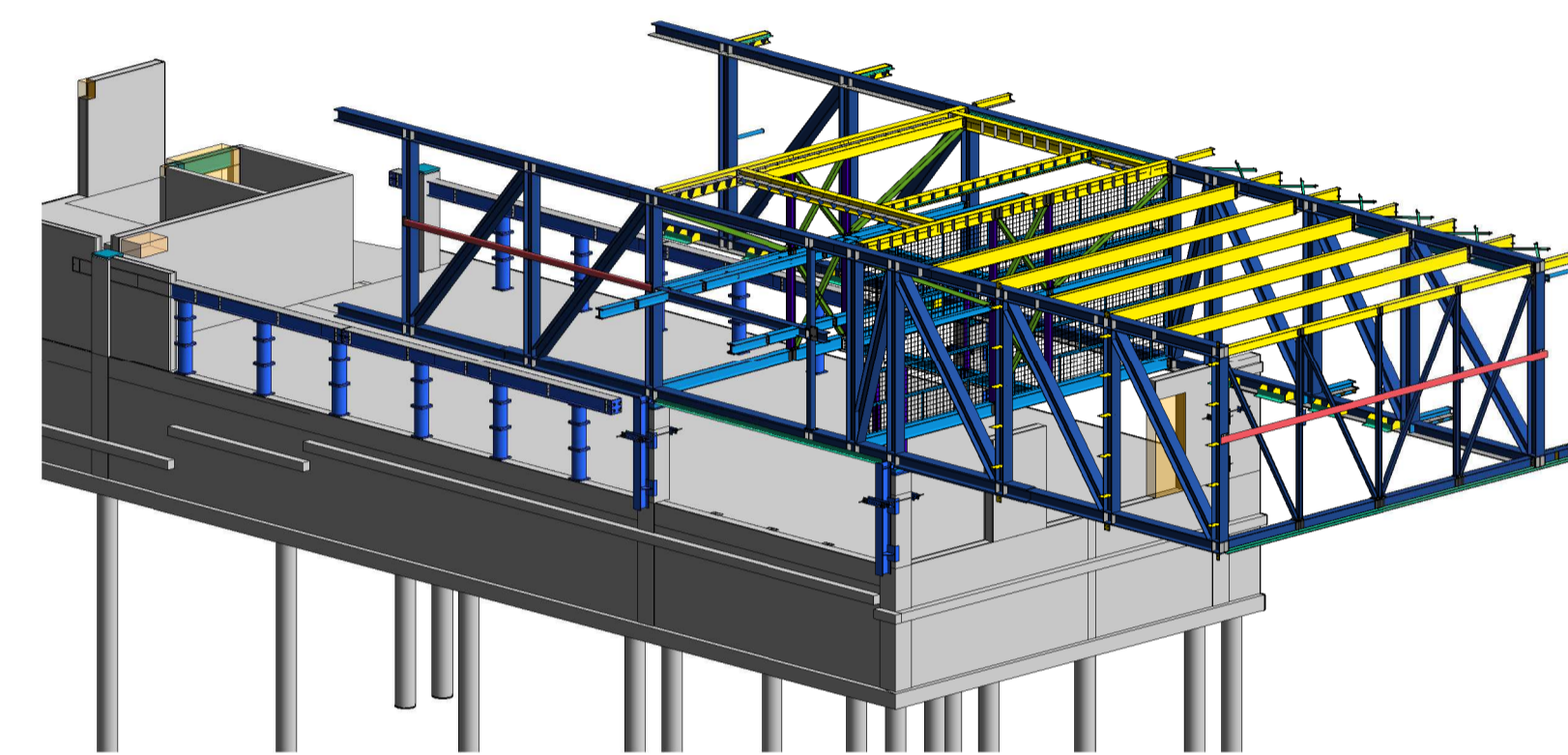
3 Fase 3 - opbouwen sectie K-J



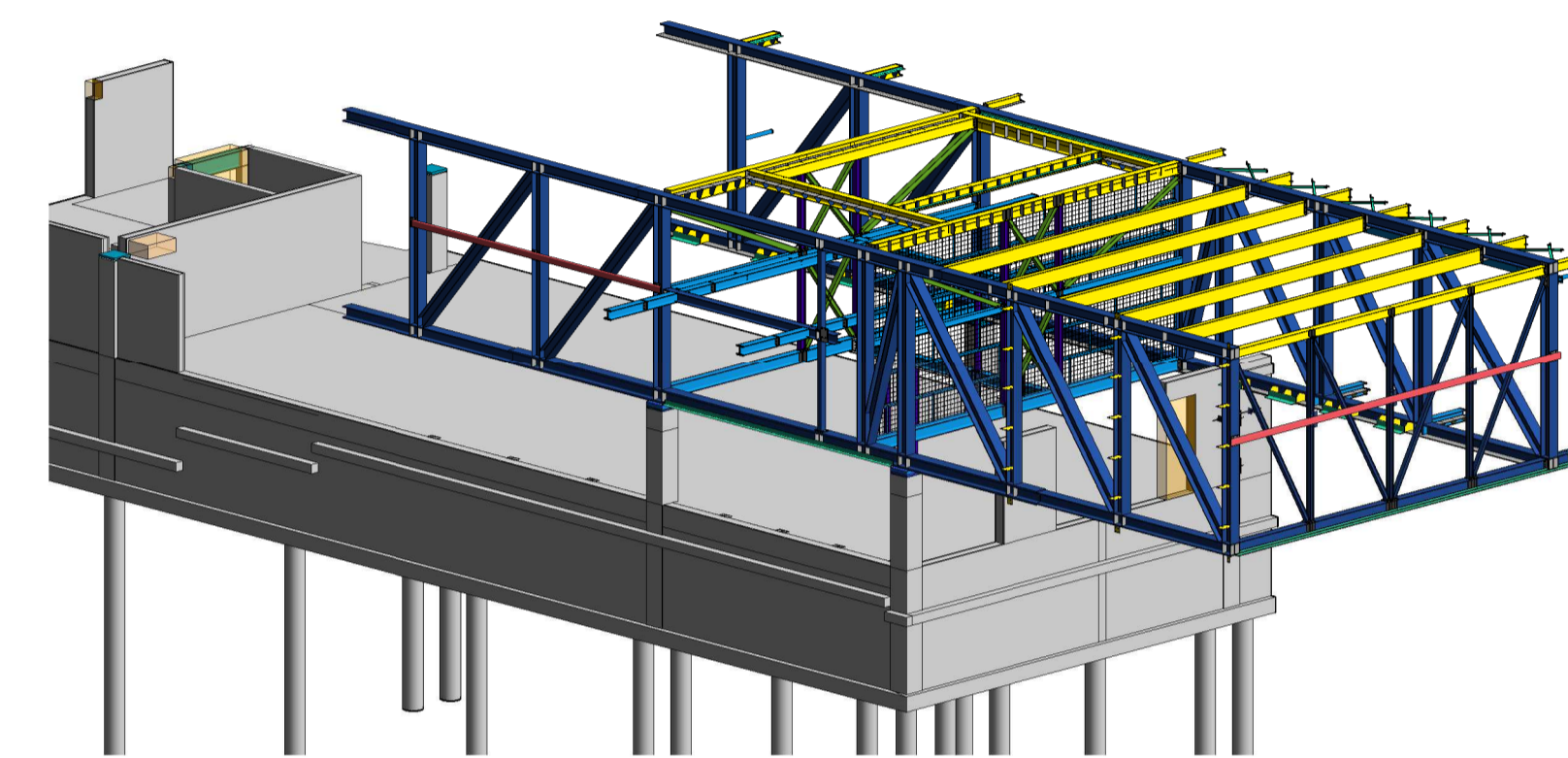
4 Fase 4 - lanceren sectie K-J



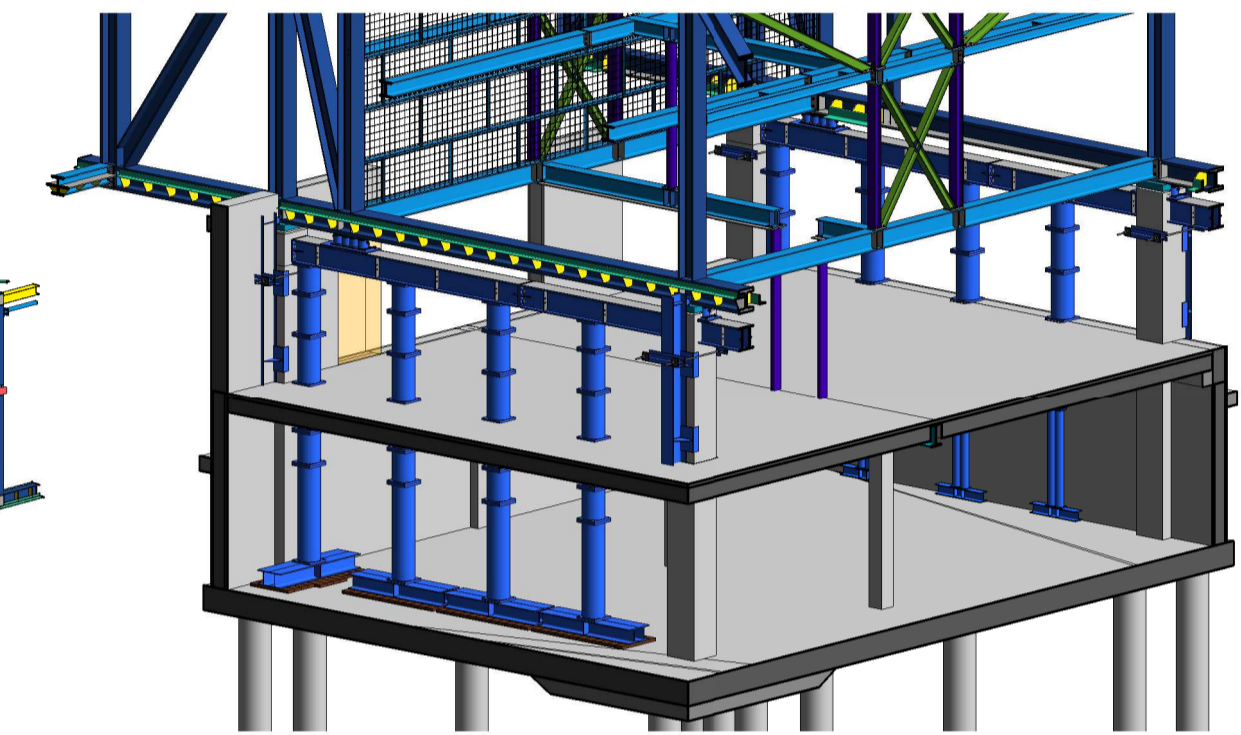
5 Fase 5 - aflaten op betonkolommen as - N
Demonteren schuifbanen tussen as L - N



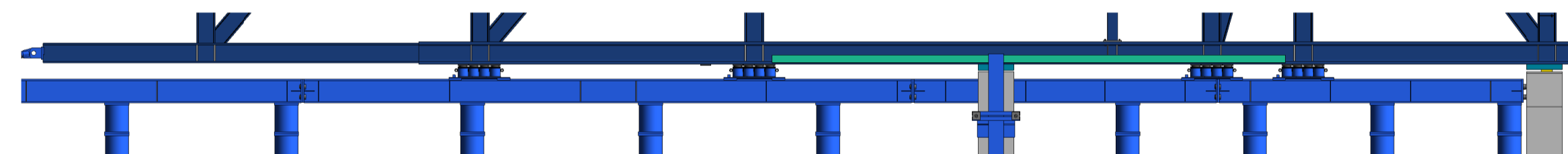
6 Fase 6 - Montage kolomkoppen en aflaten as - L



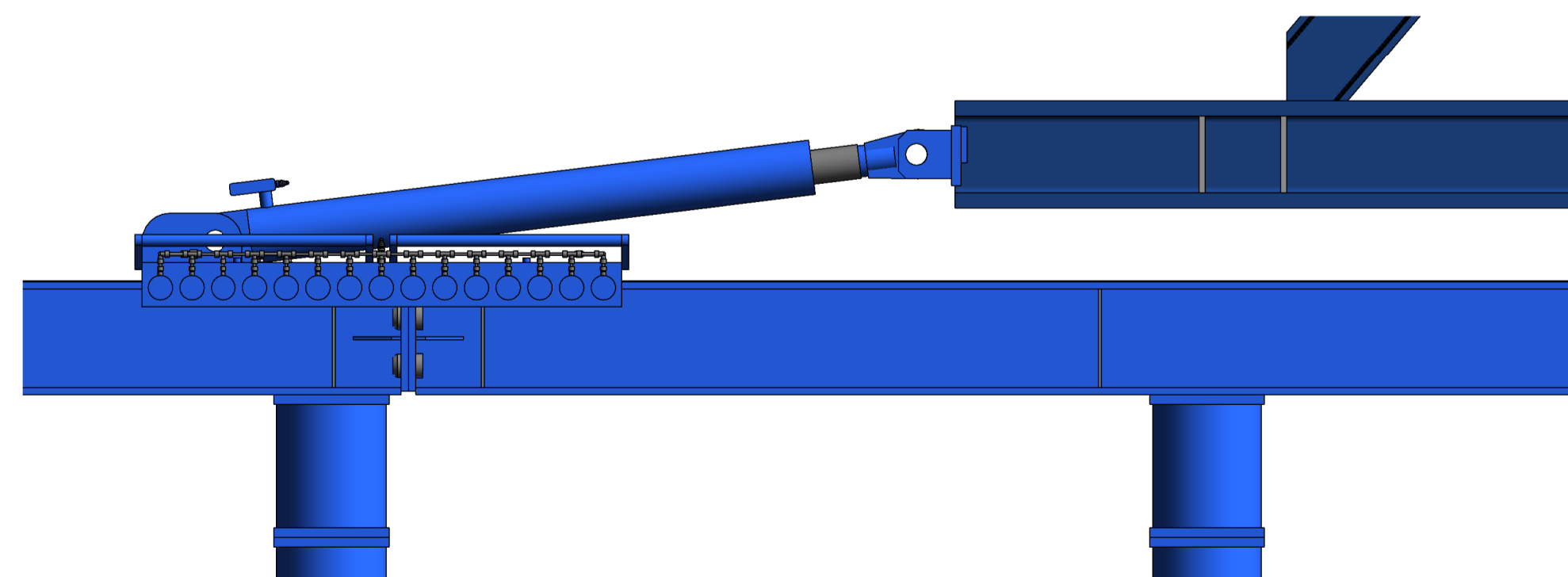
7 Fase 7 - demonteren schuifconstructie
Eindsituatie lanceerdeel



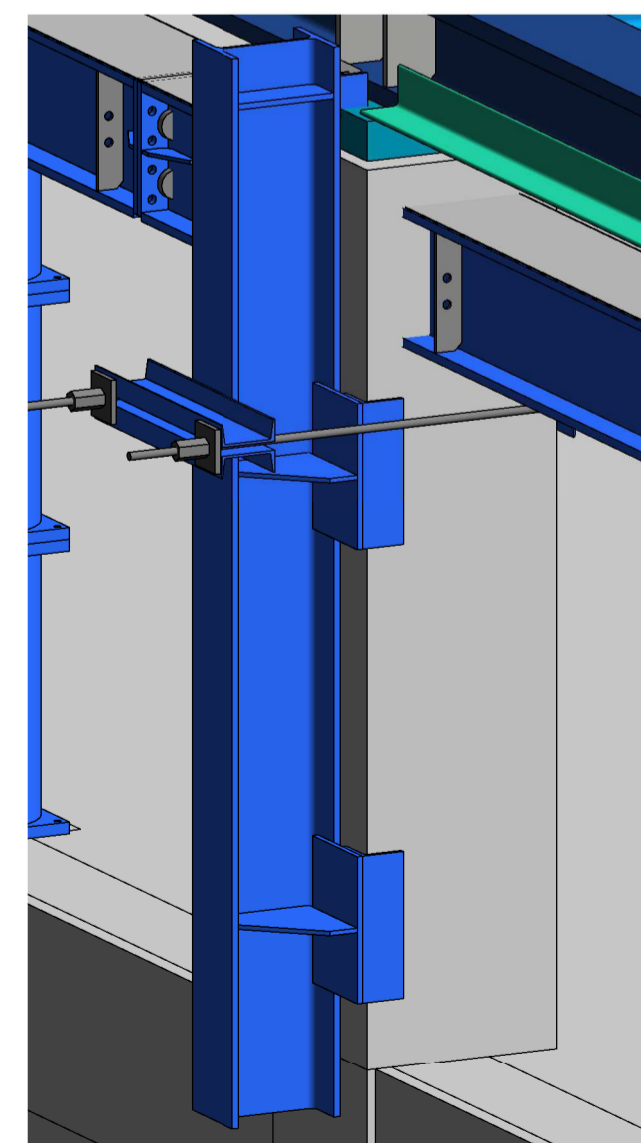
8 Detail - stempels kelder



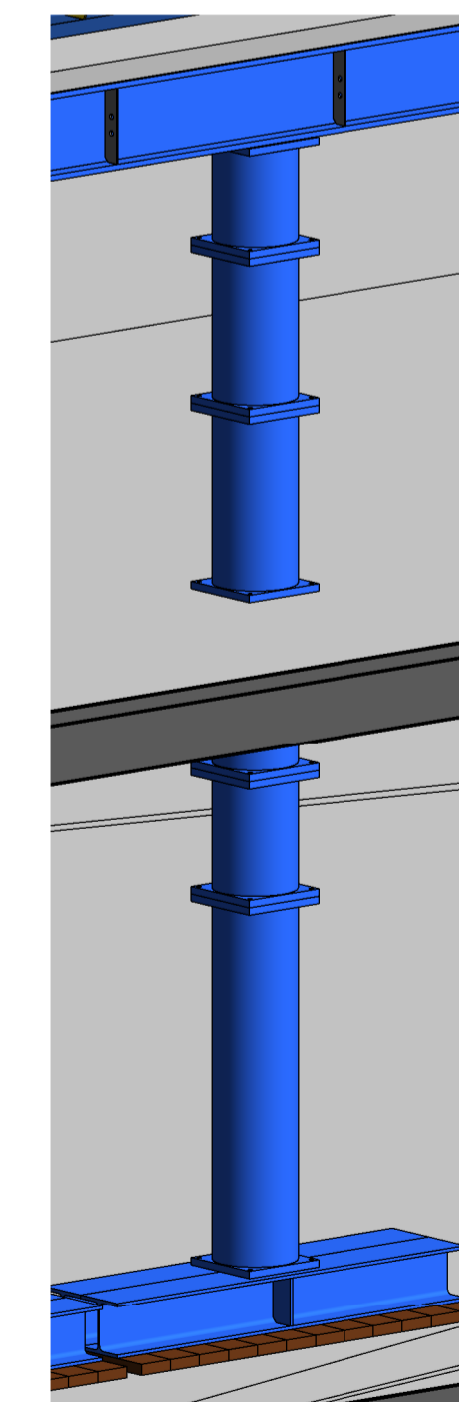
9 Detail - positie schuifstoelen



10 Detail - duwcilinder



11 Detail - zijgeleiding



12 Detail - stempels As 3

Opmerkingen:

Maten in mm
hoogtematen in m t.o.v. N.A.P.
tenzij anders vermeld

Status Concept

Revisie	Omschrijving	Getekend	Datum
4.0	Aanpassing schuifbanen en drukspreiding	JBR	25-5-2020
3.0	Demontage schuifconstructie	JBR	19-5-2020
2.0	Demontage schuifconstructie	JBR	12-5-2020
1.0	Eerste opzet	JBR	21-2-2020

deBoer

Civiele technieken deBoer bv
Ravellindok 1 | 3439 JH Nieuwegein
Industrieterrein Het Klooster Noord
telefoon +31(0)30 600 91 51

Opdrachtgever:



Object: Museum Arnhem

Onderdeel: Faseringstekening Schaal:

Getekend: JBR Document nr: 6730-TEK-001 Revisie: 4.0

© Civiele Technieken de Boer bv Formaat: A1