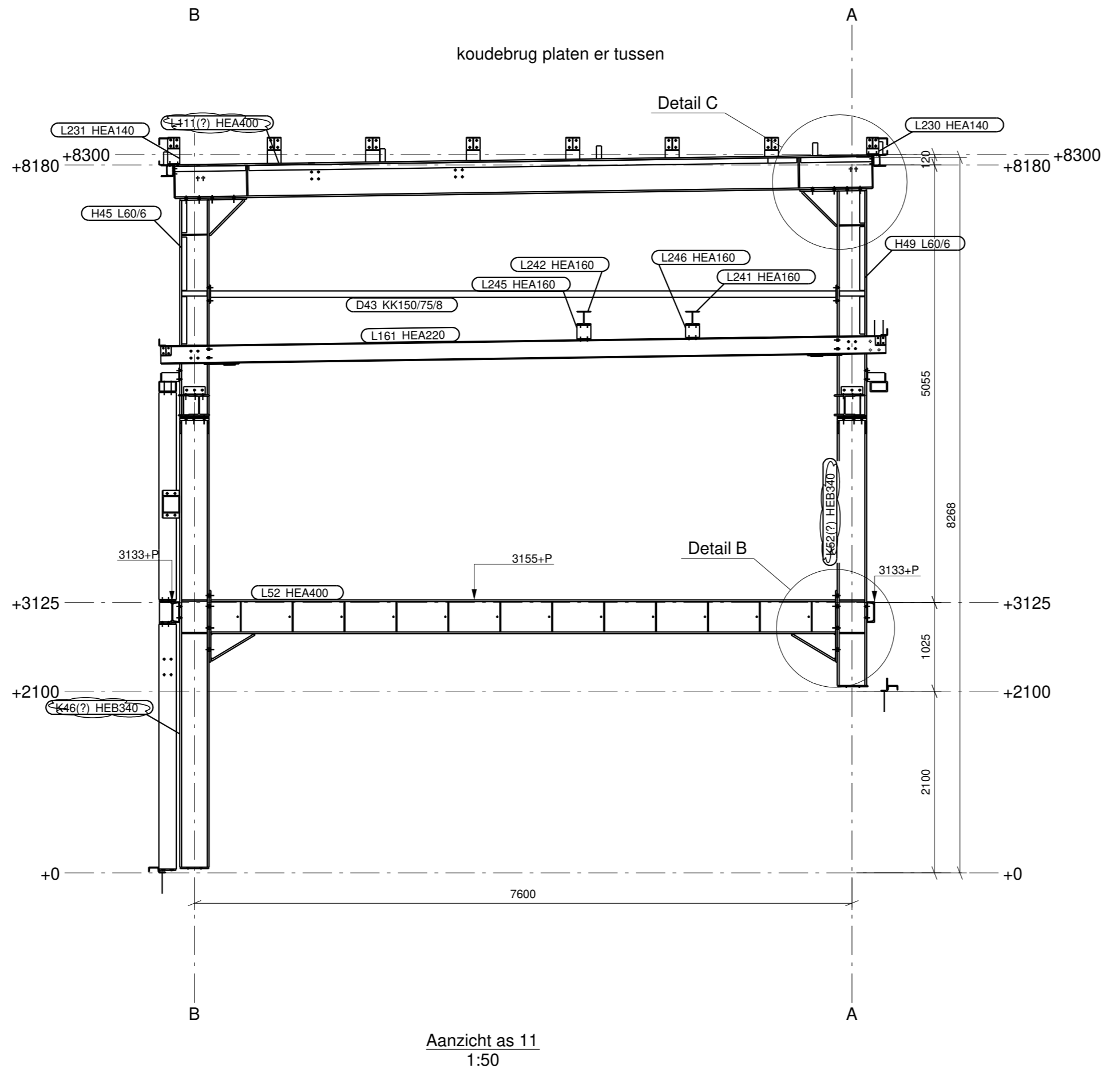
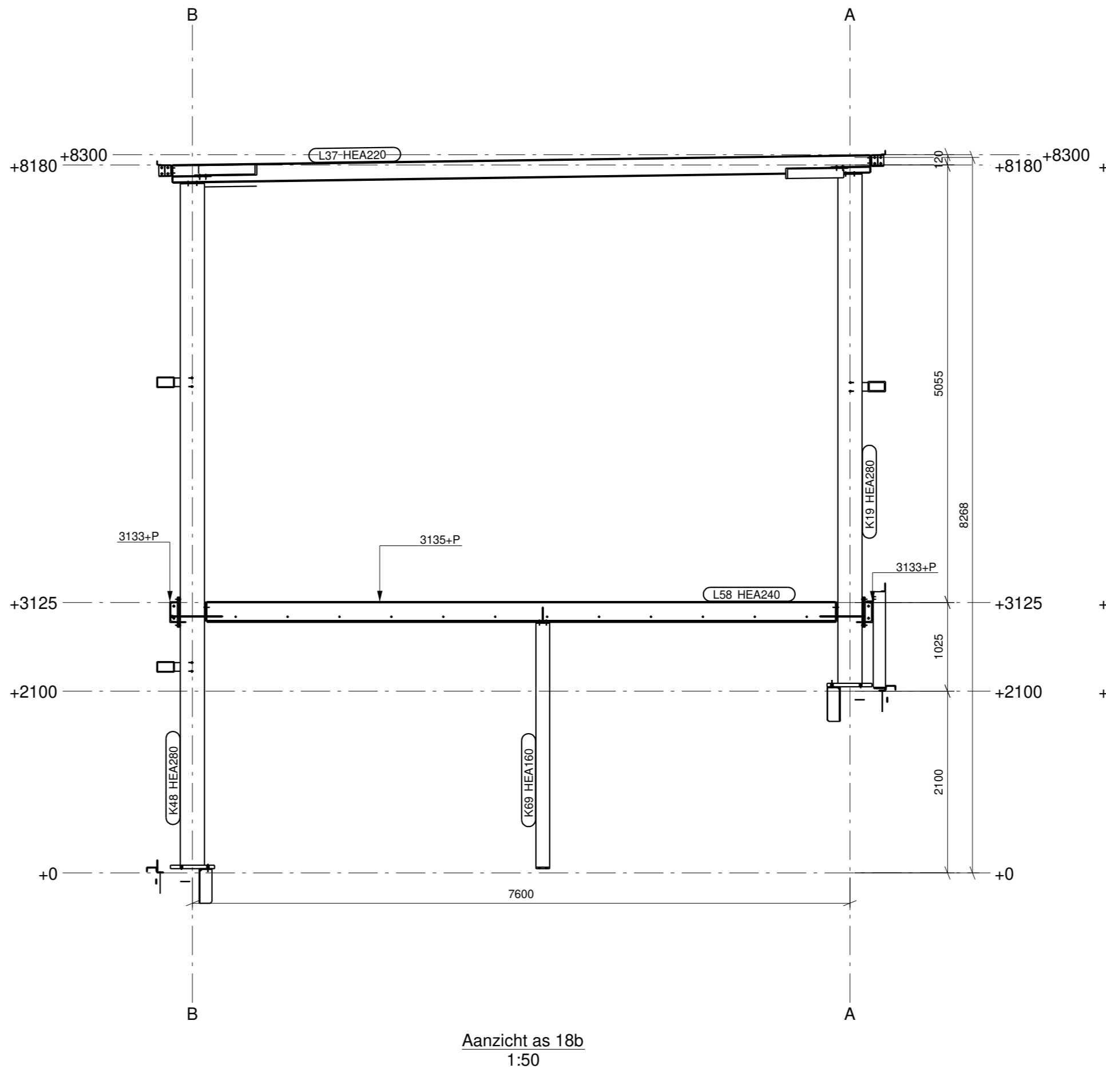


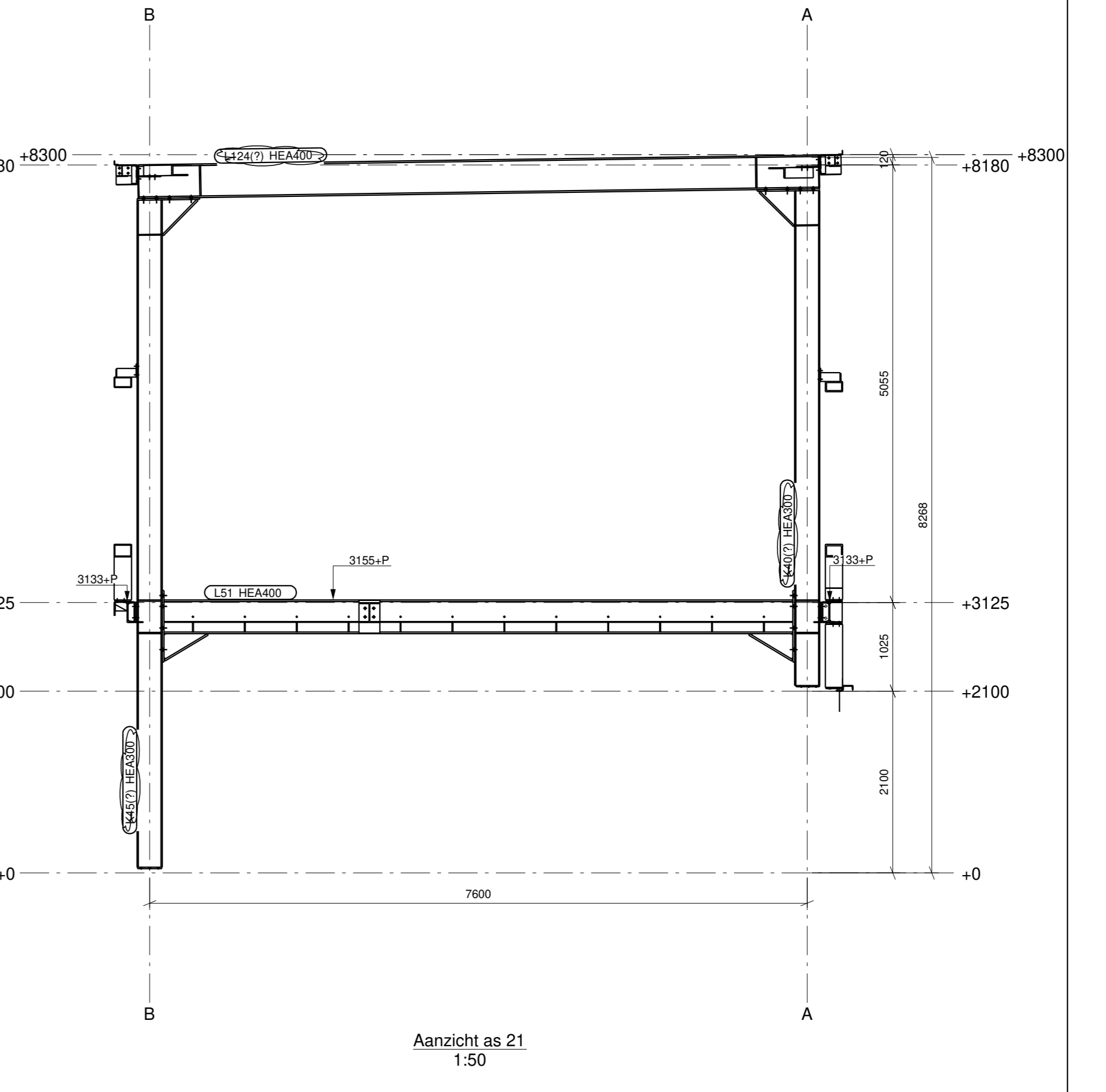
Aanzicht as 8  
1:50



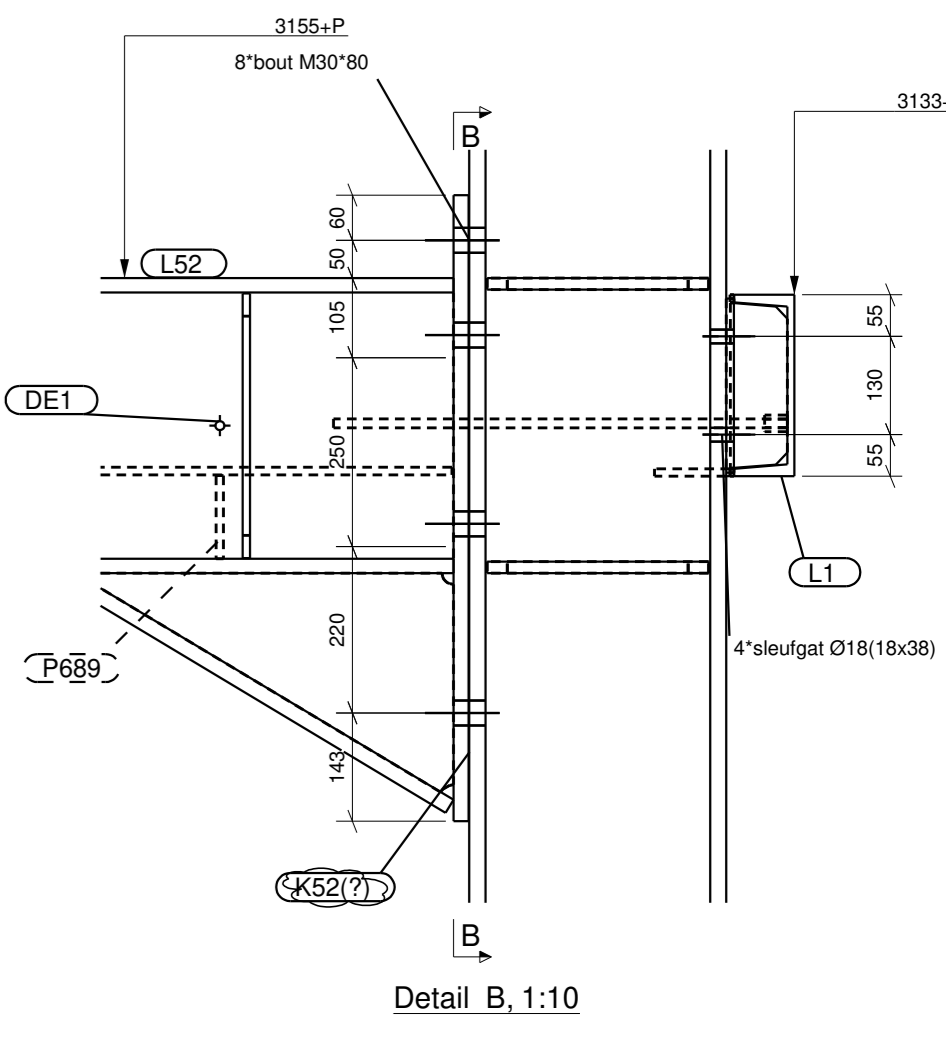
Aanzicht as 11  
1:50



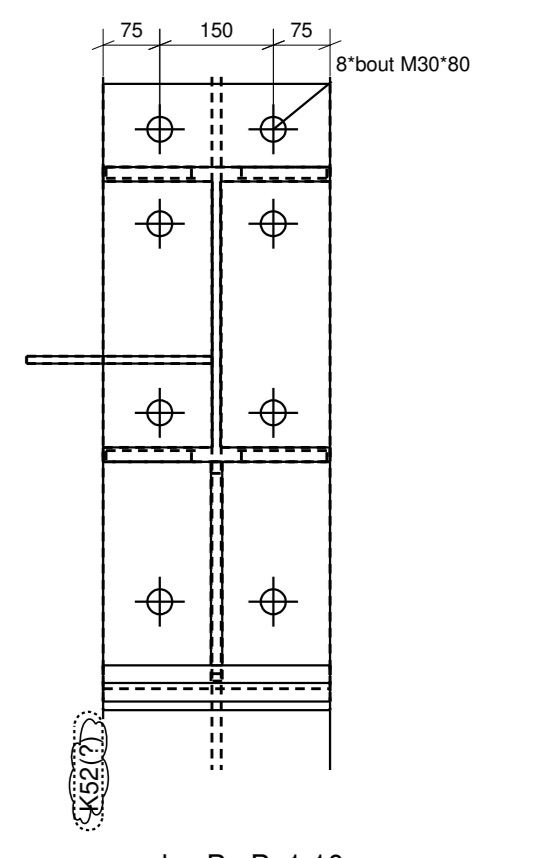
Aanzicht as 18b  
1:50



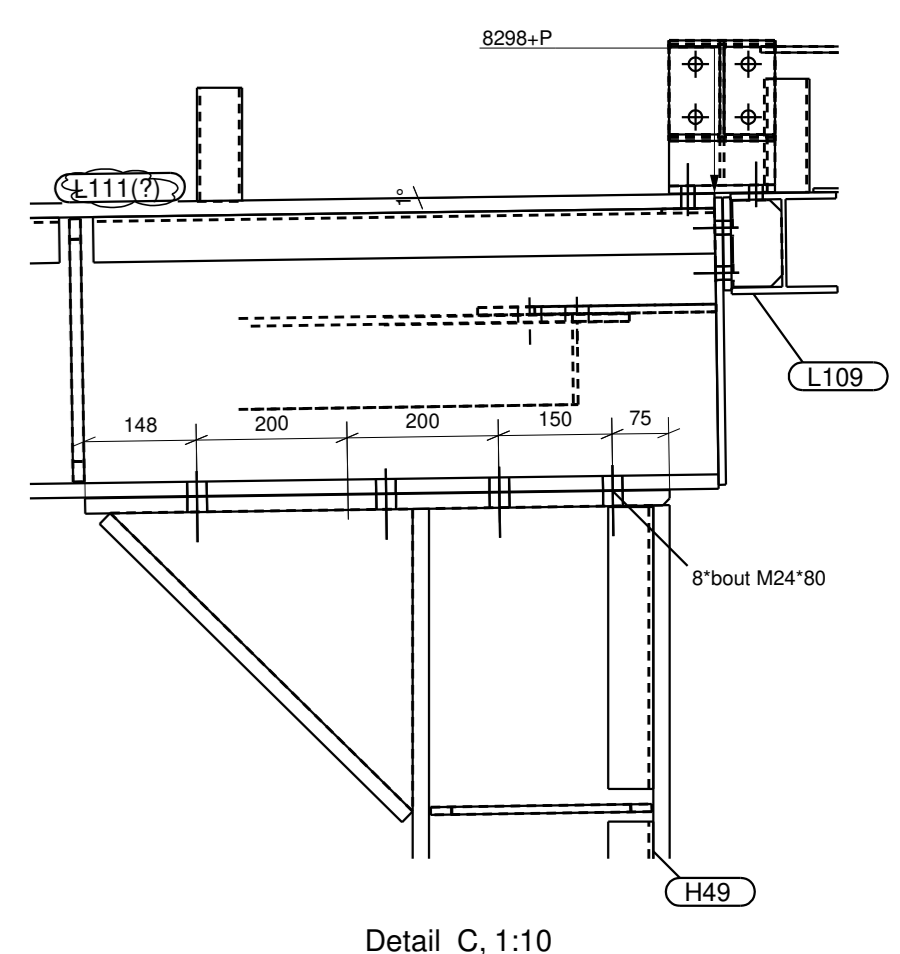
Aanzicht as 21  
1:50



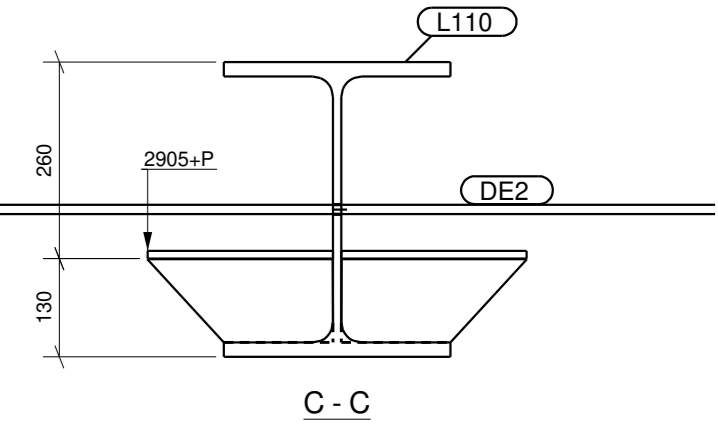
Detail B, 1:10



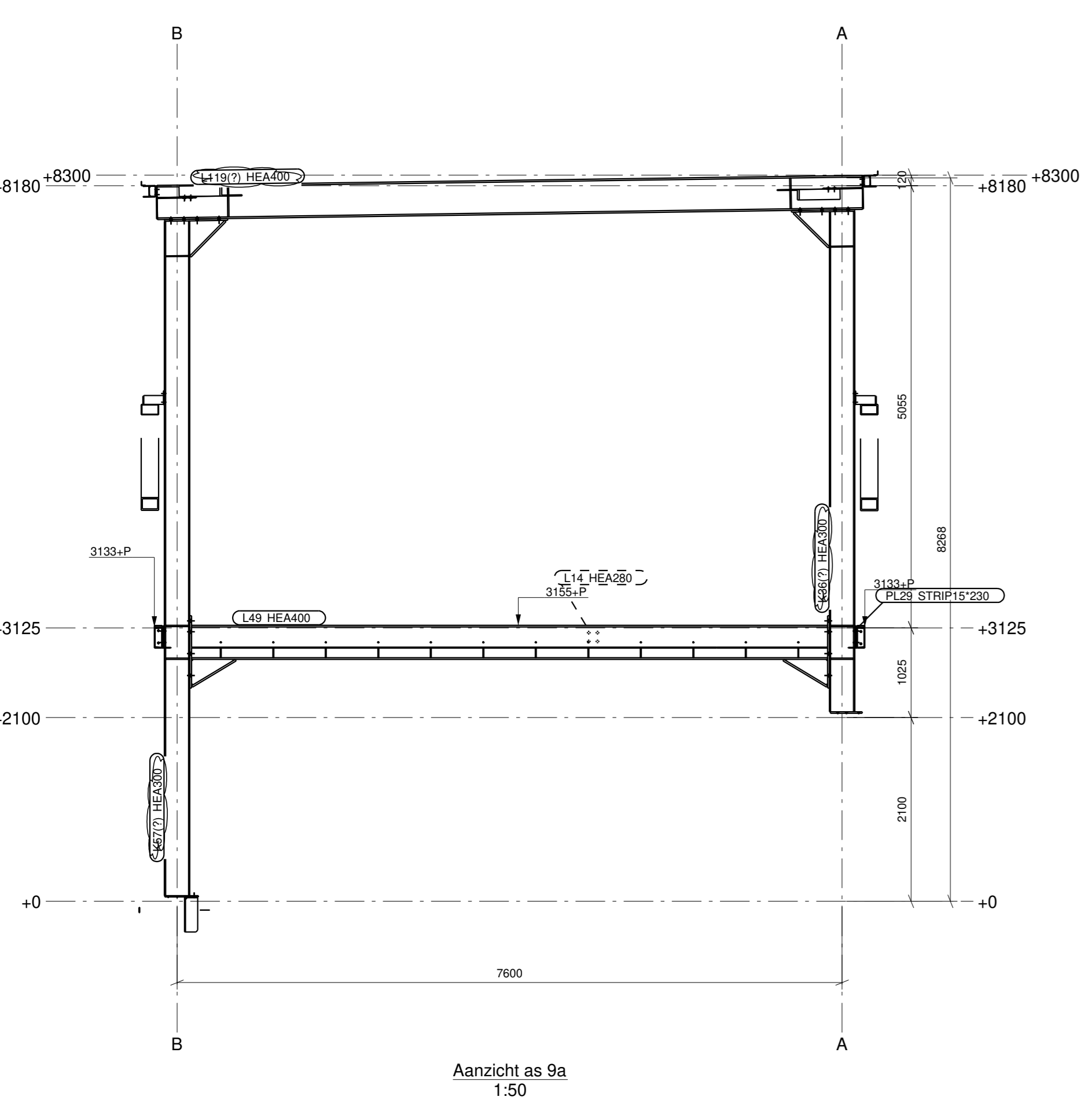
dsB - B, 1:10



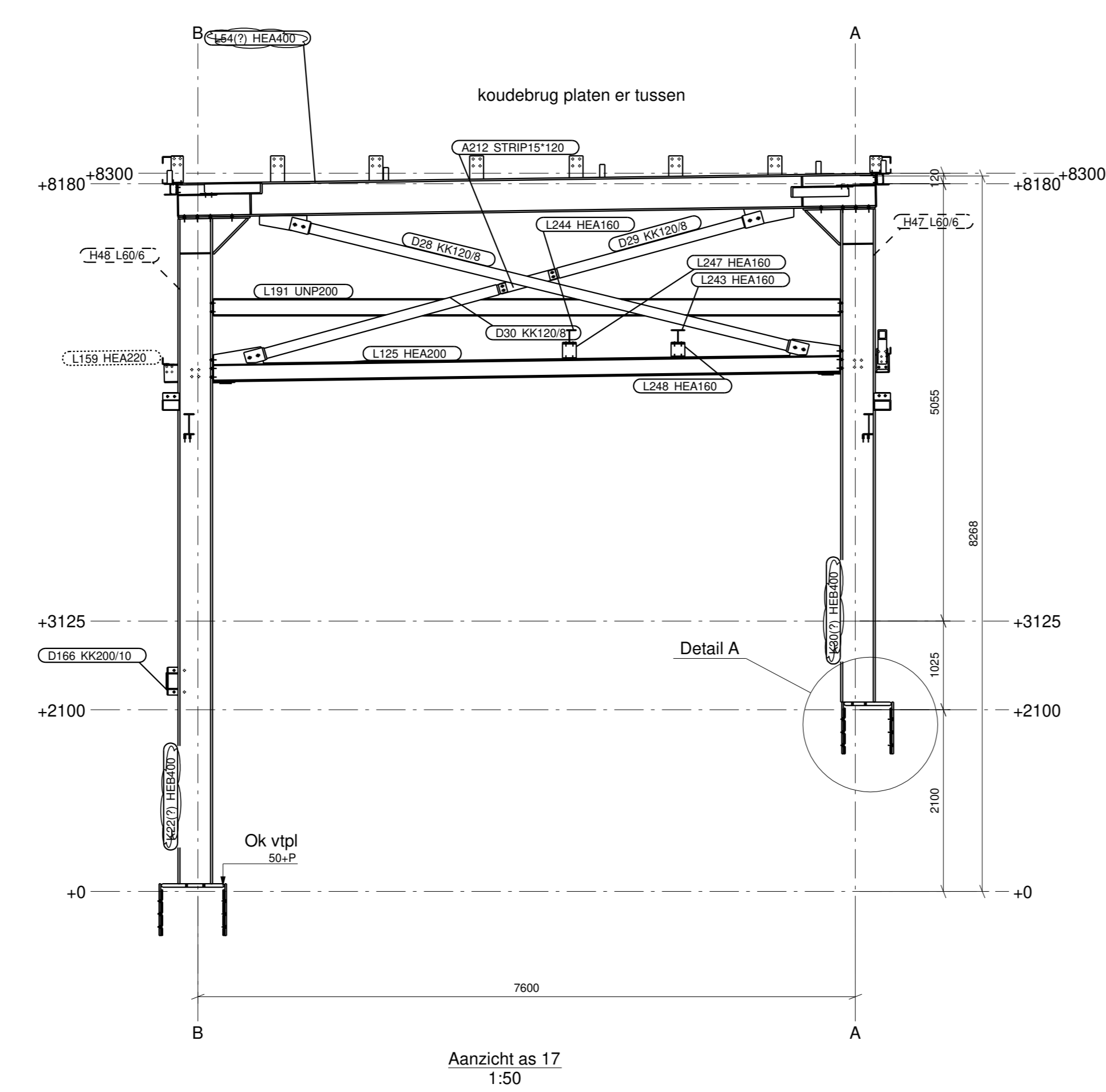
Detail C, 1:10



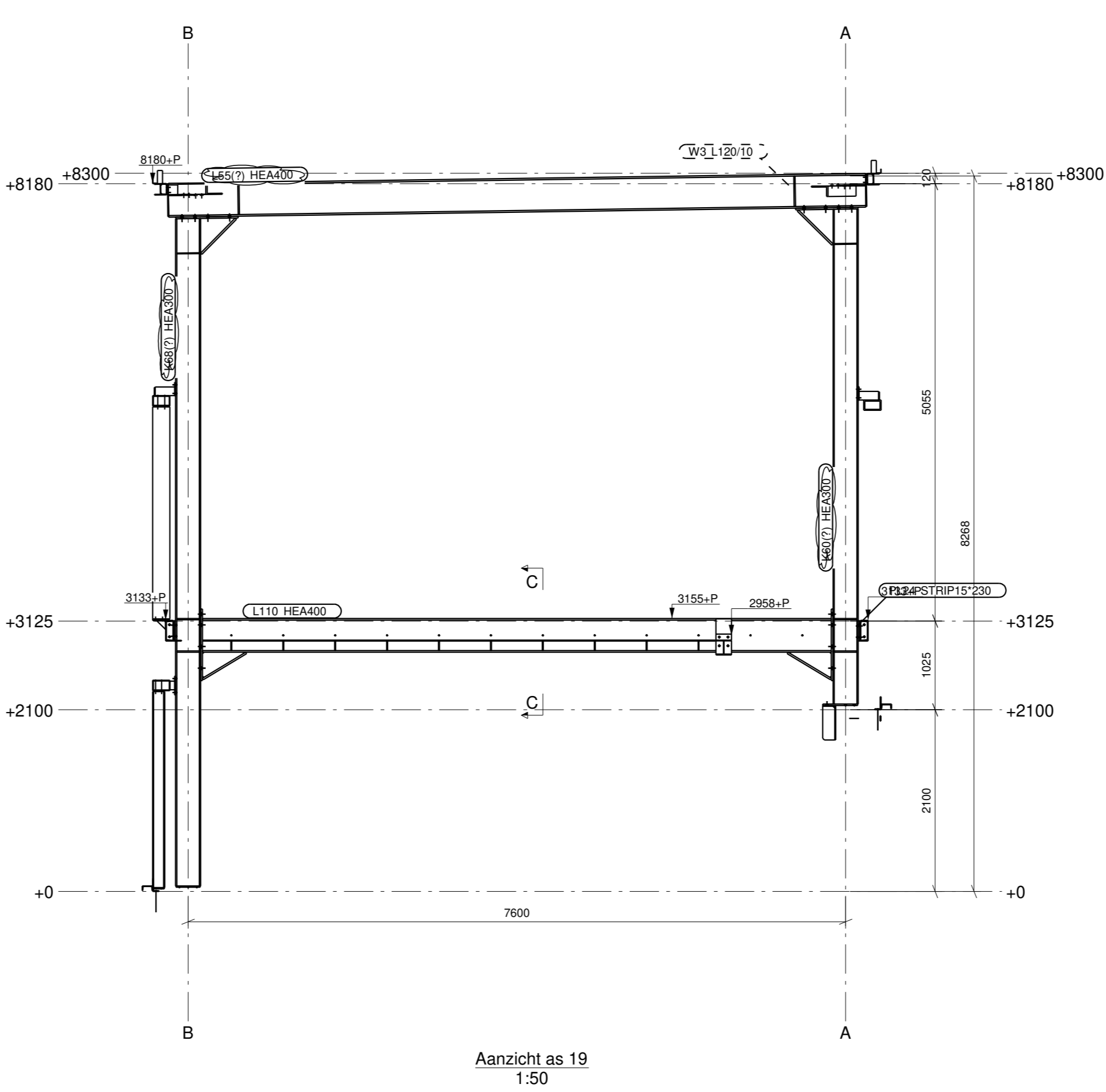
C - C



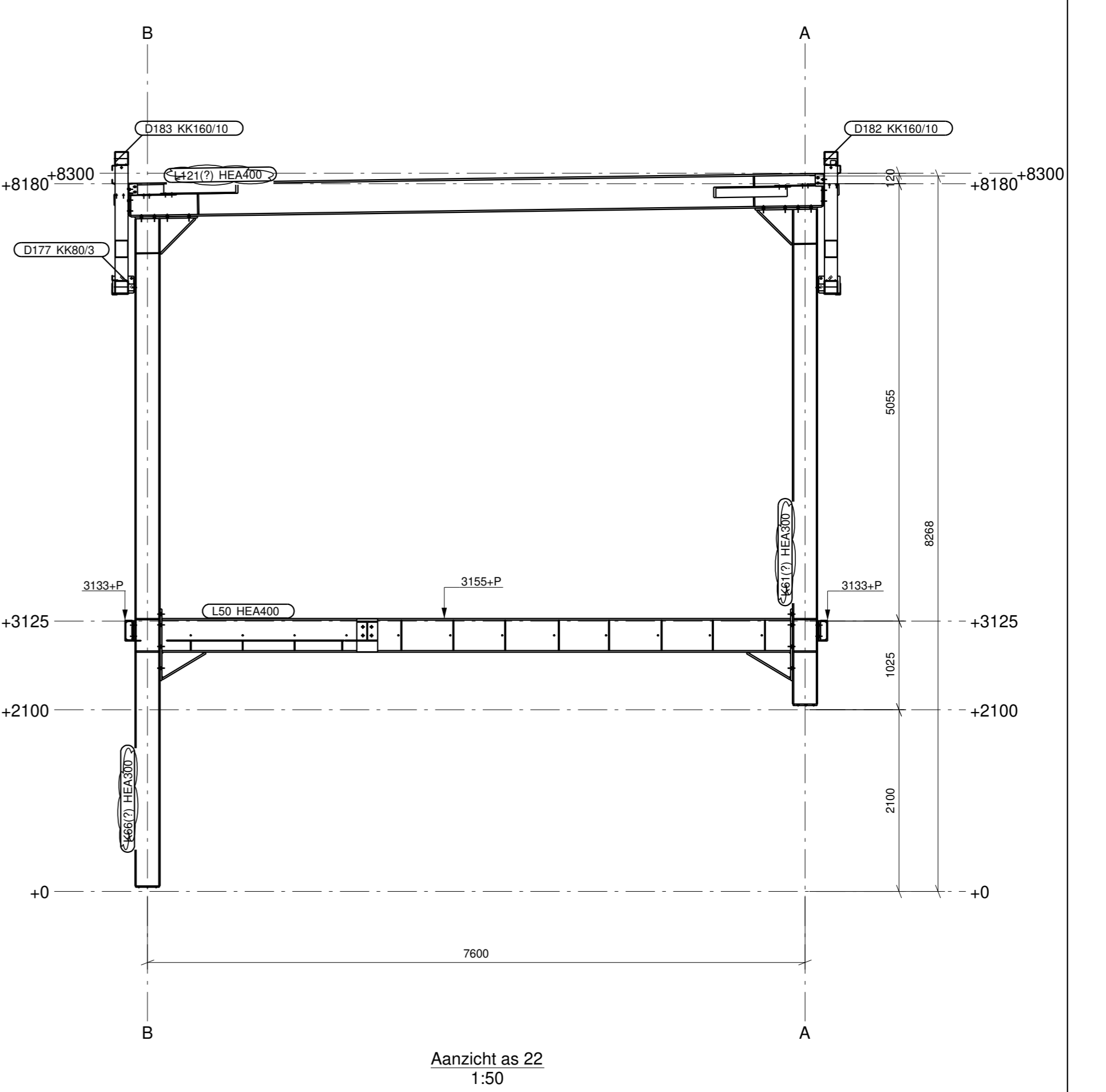
Aanzicht as 9a  
1:50



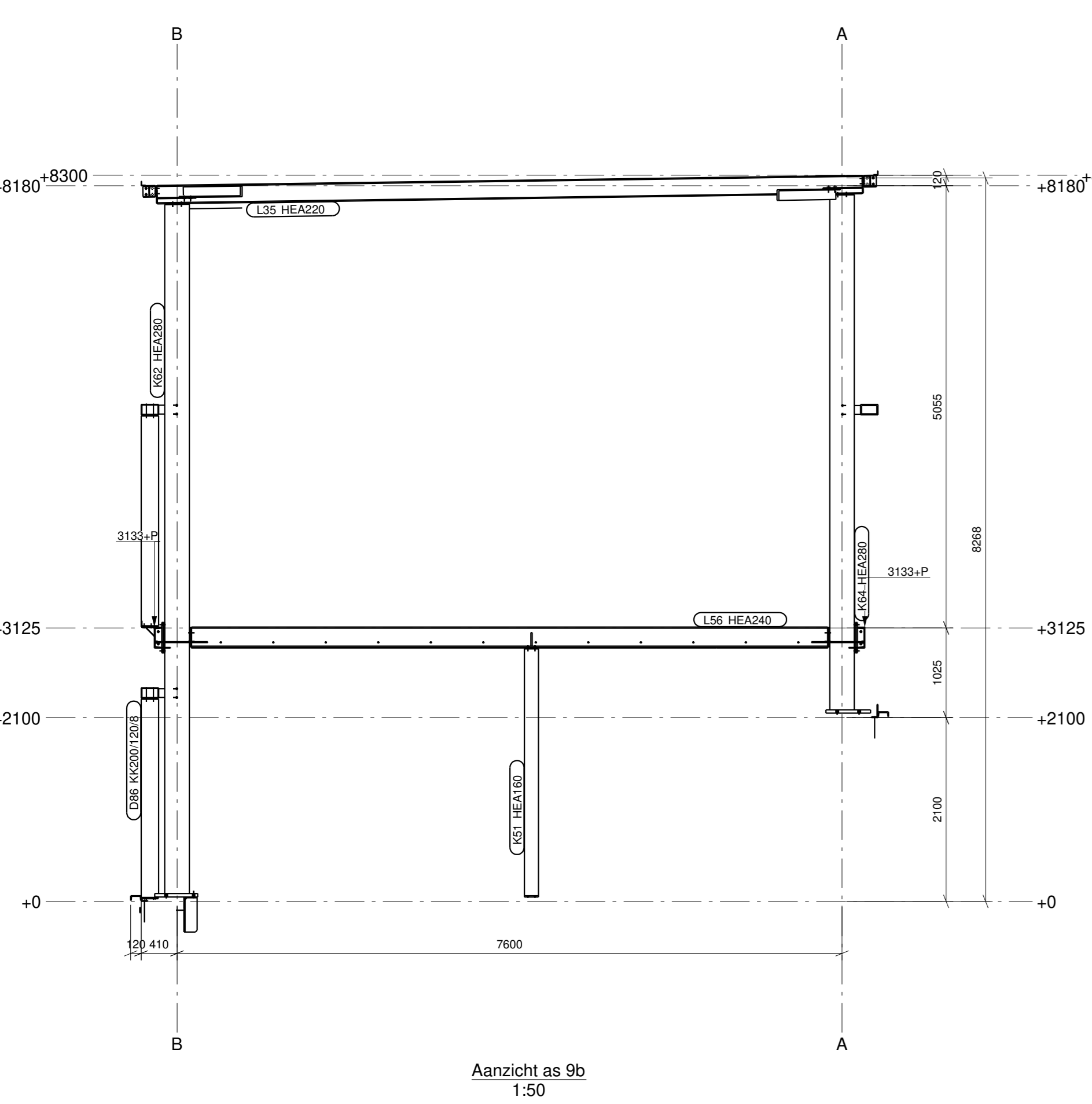
Aanzicht as 17  
1:50



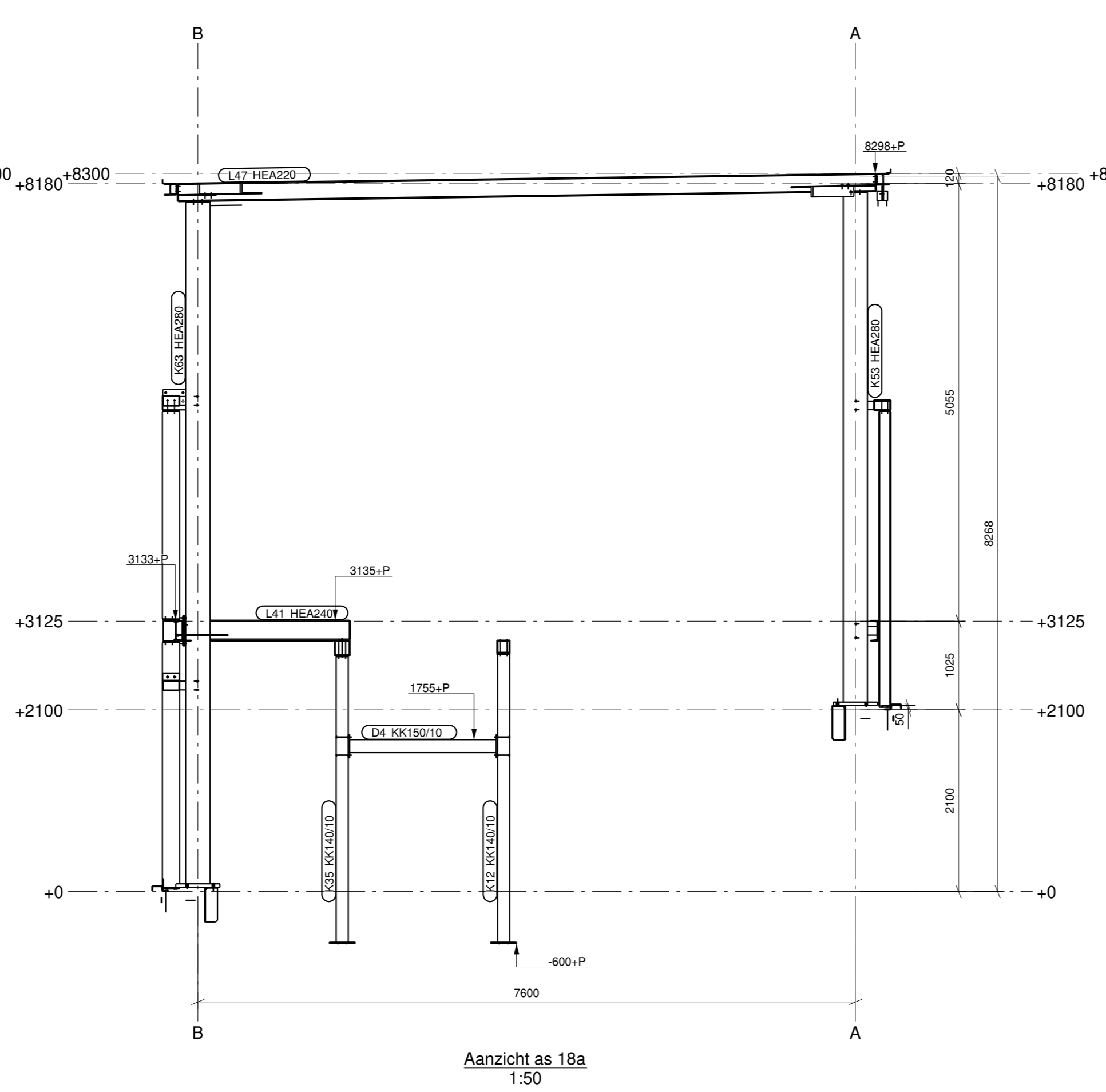
Aanzicht as 19  
1:50



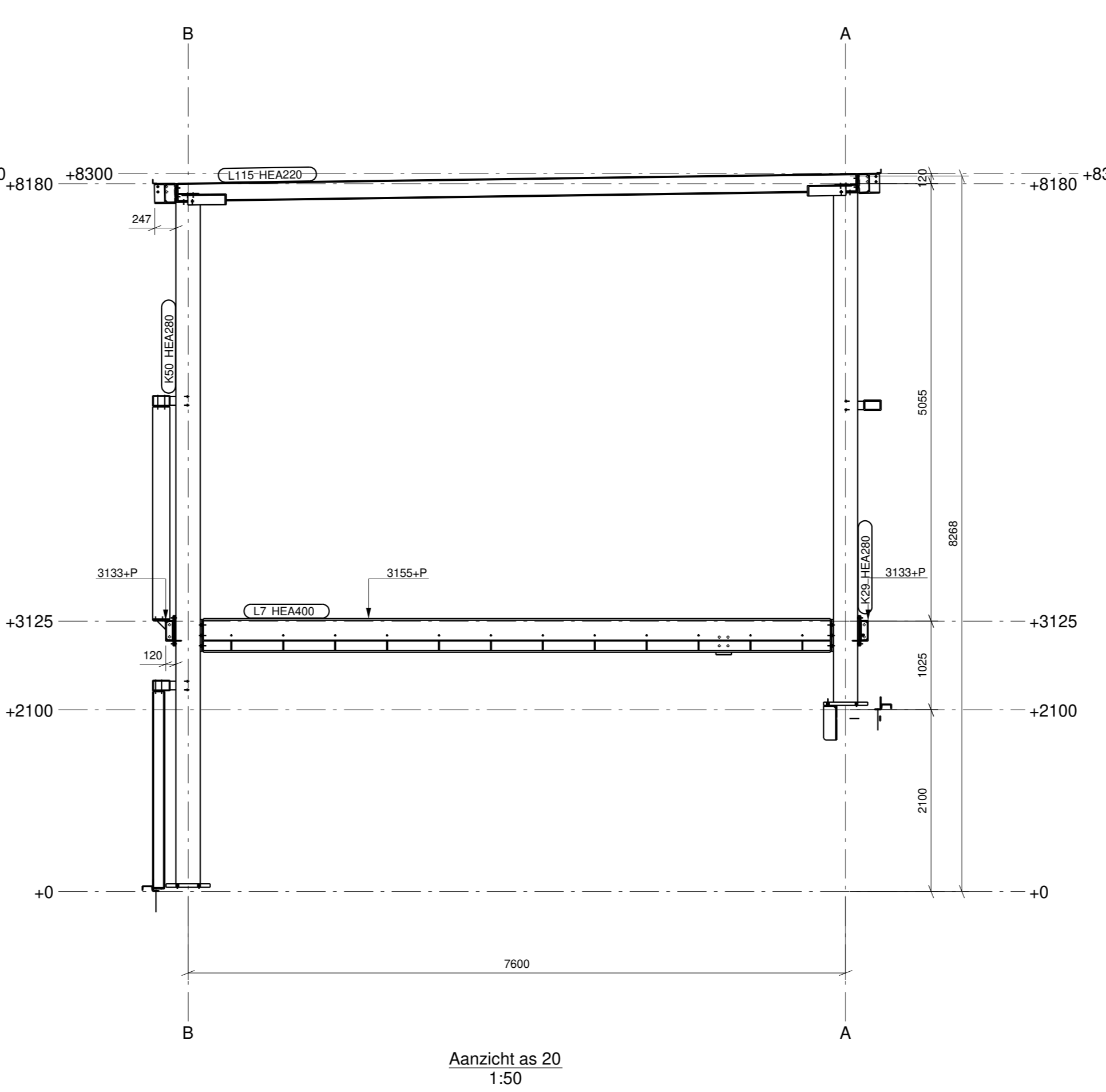
Aanzicht as 22  
1:50



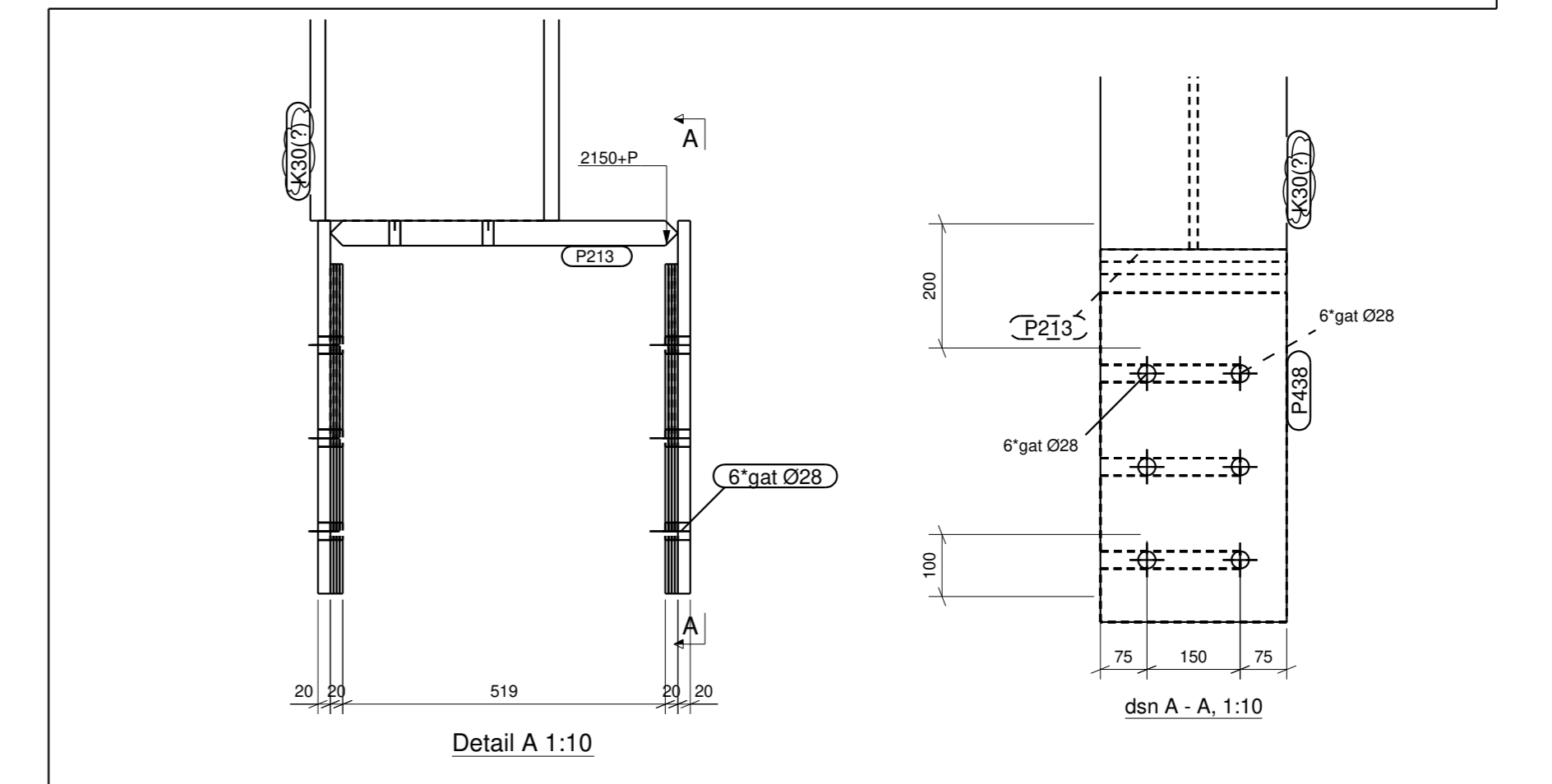
Aanzicht as 9b  
1:50



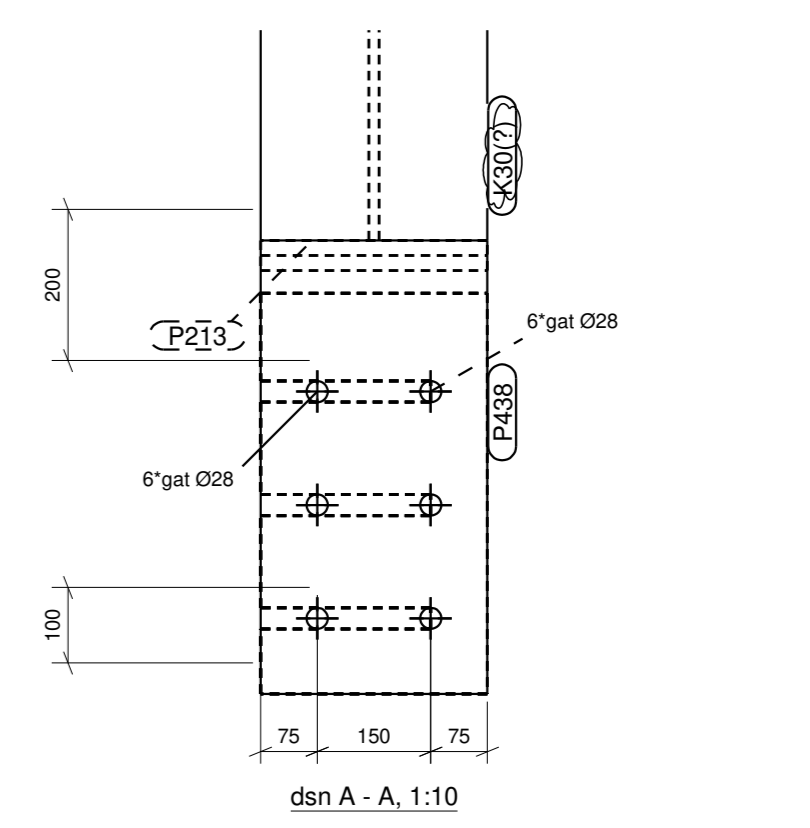
Aanzicht as 18a  
1:50



Aanzicht as 20  
1:50



Detail A, 1:10



dsA - A, 1:10

Klemconstructie.

5	Ter Goedkeuring	24.08.2020
4	Ter Goedkeuring	24.07.2020
3	Ter Goedkeuring	17.07.2020
2	Ter Goedkeuring	01.07.2020
1	Ter Controle	09.06.2020
Revisie merk Revisie omschrijving		Revisie datum

Werk:	Leuvehaven Paviljoen	Getekend: sam
Rotterdam		Datum: 23.04.2020
Opdrachtgever:	Bertens Bouw BV	Schaal: zie aanzicht
Onderwerp:	Cijfer Assen	Powered by

Materiaalsoorten en kwaliteiten: Platen en profielen S235 volgens NEN-EN10025-2, tenzij anders vermeld	Project:	P30720.1.1
bus-ankerprofielen: S275(wanddikte <math>\geq 8\text{mm}</math>) volgens NEN-EN10219-1 en NEN-EN10210-1, tenzij anders vermeld	Tekening:	G [4]
Lussen A-B, tenzij anders vermeld, volgens NEN-EN-ISO-2553:2014	Status:	Formaat: A0
	Projectie:	Ter Goedkeuring

Postbus 1  
 5080 AA Mierlo  
 Telefoon +31 (0)35 5041585  
 E-mail info@reijink.com  
 Internet www.reijink.com

Project: P30720.1.1  
 Tekening: G [4]  
 Formaat: A0  
 Status: Ter Goedkeuring